

2026

Q1



CUSHMAN &  
WAKEFIELD

URBAN RETAIL TEAM

**TORONTO**

**Retail Availability**



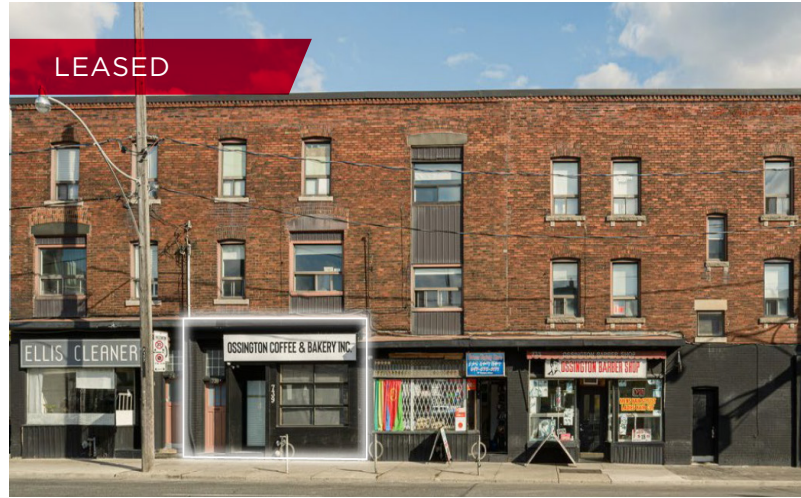
# recently leased listings

2026  
Q1



LEASED

1177 DANFORTH AVE.  
6,586 SF DIVISIBLE



LEASED

739 OSSINGTON AVE.  
816 SF



LEASED

241 KING ST. E.  
1,113 SF



LEASED

261 PRINCESS ST.  
2,166 SF



LEASED

990 BLOOR ST. W.  
1,128 SF



LEASED

175 BLOOR ST. E.  
1,315 SF & 500 SF



LEASED

425 UNIVERSITY AVE.  
1,925 SF



# newly launched listings

2026  
Q1



**FOR LEASE**  
1128 YONGE ST.  
672 SF



**FOR LEASE**  
111 BATHURST ST.  
10,303 SF DIVISIBLE



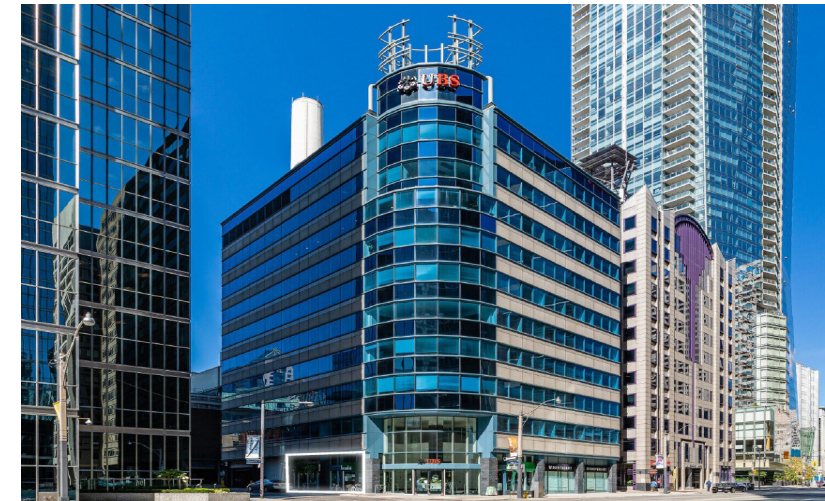
**FOR LEASE**  
925 QUEEN ST. W.  
1,591 SF



**FOR LEASE**  
822-828 RICHMOND ST. W.  
2,410 SF & 3,087 SF



**FOR LEASE**  
577 WELLINGTON ST. W.  
3,400 SF



**FOR LEASE**  
154 UNIVERSITY AVE.  
759 SF



# listing portfolio

# 2026 Q1



**FOR LEASE**

110 AVENUE RD.

1,400 SF AND 2,174 SF

TWO RETAIL UNITS FOR LEASE IN BLOOR-YORKVILLE



**FOR LEASE**

261 PRINCESS ST.

1,888 SF

ONE UNIT REMAINING IN DOWNTOWN KINGSTON



**FOR LEASE**

393 UNIVERSITY AVE.

635 SF, 763 SF, 697 SF, 1,150 SF AND 1,958 SF

MULTIPLE RETAIL UNITS FOR LEASE IN  
DOWNTOWN TORONTO



**FOR LEASE**

990 BLOOR ST. W.

1,685 SF AND 683 SF

RETAIL UNITS FOR LEASE AT BLOOR AND DOVERCOURT



**FOR LEASE**

315 SPADINA AVE.

800 SF - 1,450 SF

MULTIPLE RETAIL UNITS FOR LEASE IN CHINATOWN



**FOR LEASE**

3070 ELLESMERE RD.

1,470 SF, 1430 SF AND 1,307 SF

RETAIL UNITS AT THE BASE OF STUDENT RENTAL UNITS



# listing portfolio

# 2026 Q1



**FOR LEASE**  
824-826 BROADVIEW AVE.  
1,086 SF DIVISIBLE  
RETAIL OPPORTUNITY IN THE EAST END ON  
BROADVIEW AVENUE



**FOR LEASE**  
299 CAMPBELL AVE.  
3,212 SF DIVISIBLE  
PRIME RETAIL FOR LEASE IN THE JUNCTION TRIANGLE  
AT THE BASE OF A PURPOSE BUILT RENTAL



**FOR LEASE**  
21-23 BEDFORD RD.  
1,695 SF, 1,455 SF AND 4,084 SF  
FLAGSHIP HERITAGE HOUSE AND BOUTIQUE OFFICE BUILDING  
FOR LEASE



**FOR LEASE**  
1376 BAYVIEW AVE.  
6,924 SF  
OFFICE / RETAIL OPPORTUNITY IN BAYVIEW-LEASIDE  
COMMUNITY



**FOR LEASE**  
18 KING ST. E.  
UP TO 3,504 SF  
LOCATED OFF OF KING STREET EAST WITH FRONTAGE ON VICTORIA STREET  
WITH MULTIPLE DEMISING OPTIONS



FOR MORE INFORMATION  
PLEASE CONTACT



**Carmen Siegel\***  
*Associate Vice President*  
+1 416 359 2365  
carmen.siegel@cushwake.com



**Hannah Kinney\***  
*Senior Associate*  
+1 416 359 2390  
hannah.kinney@cushwake.com

LISTING INQUIRIES

**+1 416 862 1710**



161 Bay Street, Suite 1500  
Toronto, ON M5J 2S1 | Canada  
[cushmanwakefield.com](http://cushmanwakefield.com)

©2026 Cushman & Wakefield. All rights reserved. The information contained in this communication is strictly confidential. This information has been obtained from sources believed to be reliable but has not been verified. NO WARRANTY OR REPRESENTATION, EXPRESS OR IMPLIED, IS MADE AS TO THE CONDITION OF THE PROPERTY (OR PROPERTIES) REFERENCED HEREIN OR AS TO THE ACCURACY OR COMPLETENESS OF THE INFORMATION CONTAINED HEREIN, AND SAME IS SUBMITTED SUBJECT TO ERRORS, OMISSIONS, CHANGE OF PRICE, RENTAL OR OTHER CONDITIONS, WITHDRAWAL WITHOUT NOTICE, AND TO ANY SPECIAL LISTING CONDITIONS IMPOSED BY THE PROPERTY OWNER(S). ANY PROJECTIONS, OPINIONS, OR ESTIMATES ARE SUBJECT TO UNCERTAINTY AND DO NOT SIGNIFY CURRENT OR FUTURE PROPERTY PERFORMANCE.  
\*Sales Representative \*\*Broker



Home

Recently Leased

New Listings

Listing Portfolio

Contact