

# 490 EAST MIDDLEFIELD

MOUNTAIN VIEW, CA



±43,466 SQUARE FEET



# PROPERTY HIGHLIGHTS



Two Story Freestanding Class A Building  
Totaling  $\pm 43,466$  SF



Prominent Corner Identity &  
Mountain View Location



Move in Ready, Plug & Play with  
326 (6x3) Workstations



Building & Monument Signage



Private Outdoor Patio



2,000 Amps at 277/480 Volts



Showers



Dock & Potential Grade Level Loading



$\pm 3.7/1,000$  Parking



Across the Street from VTA Light Rail Station  
5 Minute Ride on VTA Light Rail to Downtown  
Mountain View



# 490

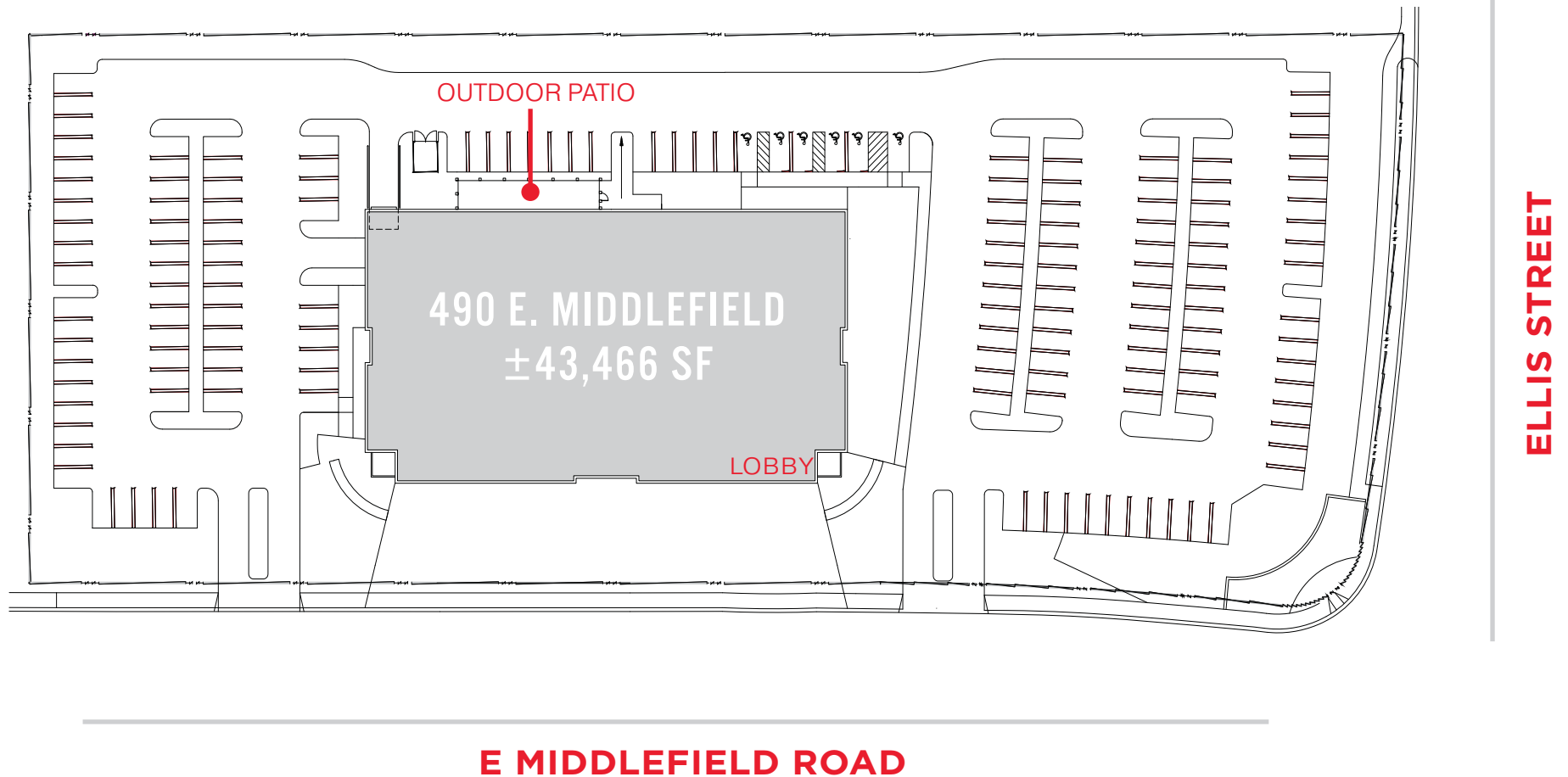


# LOCATION MAP



# 490

# SITE PLAN



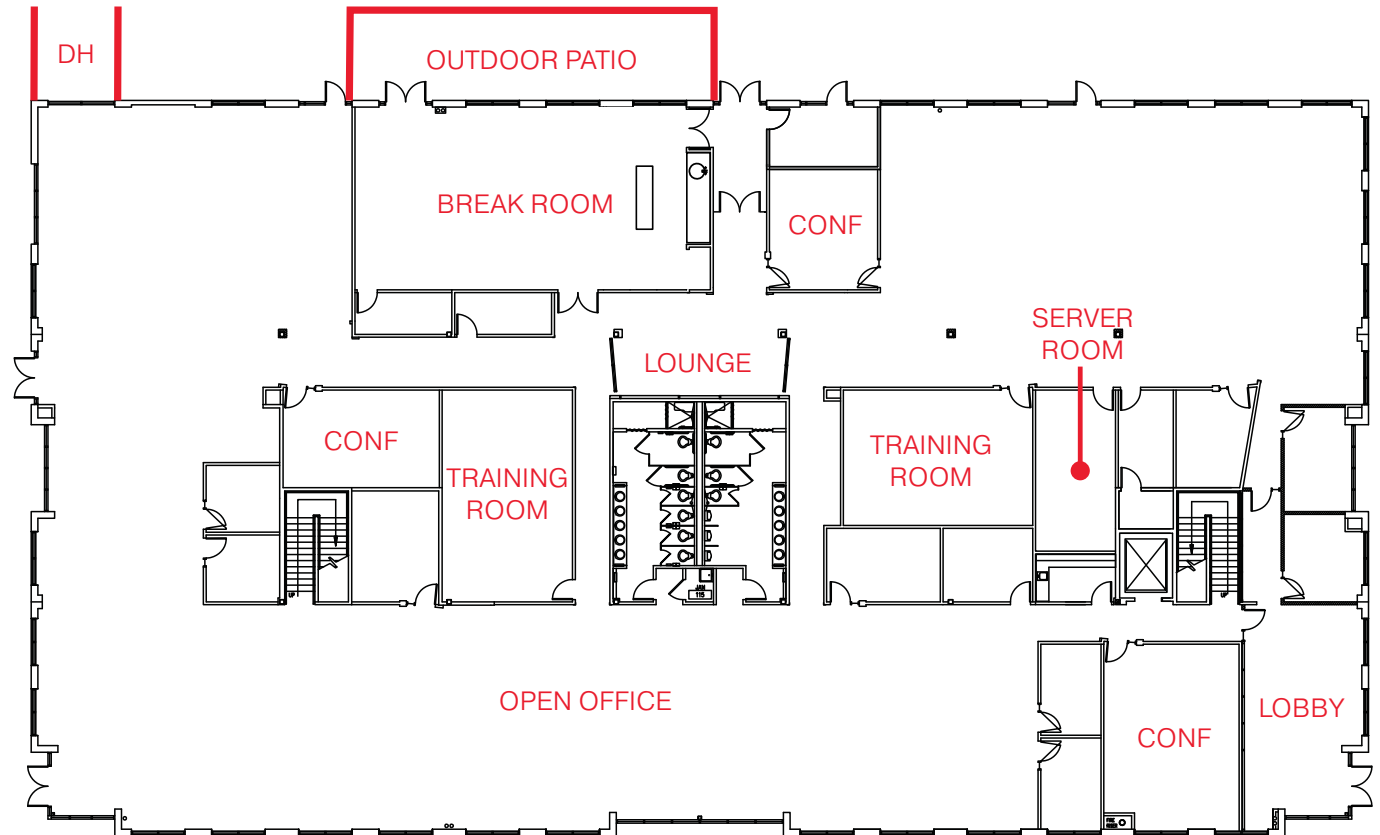
# 490



# FLOOR PLAN

## FIRST FLOOR 144 (6X3) WORKSTATIONS

- 8 Offices
- 4 Conference Rooms
- 2 Training Rooms
- Server Room
- Break Room
- Showers
- Outdoor Patio

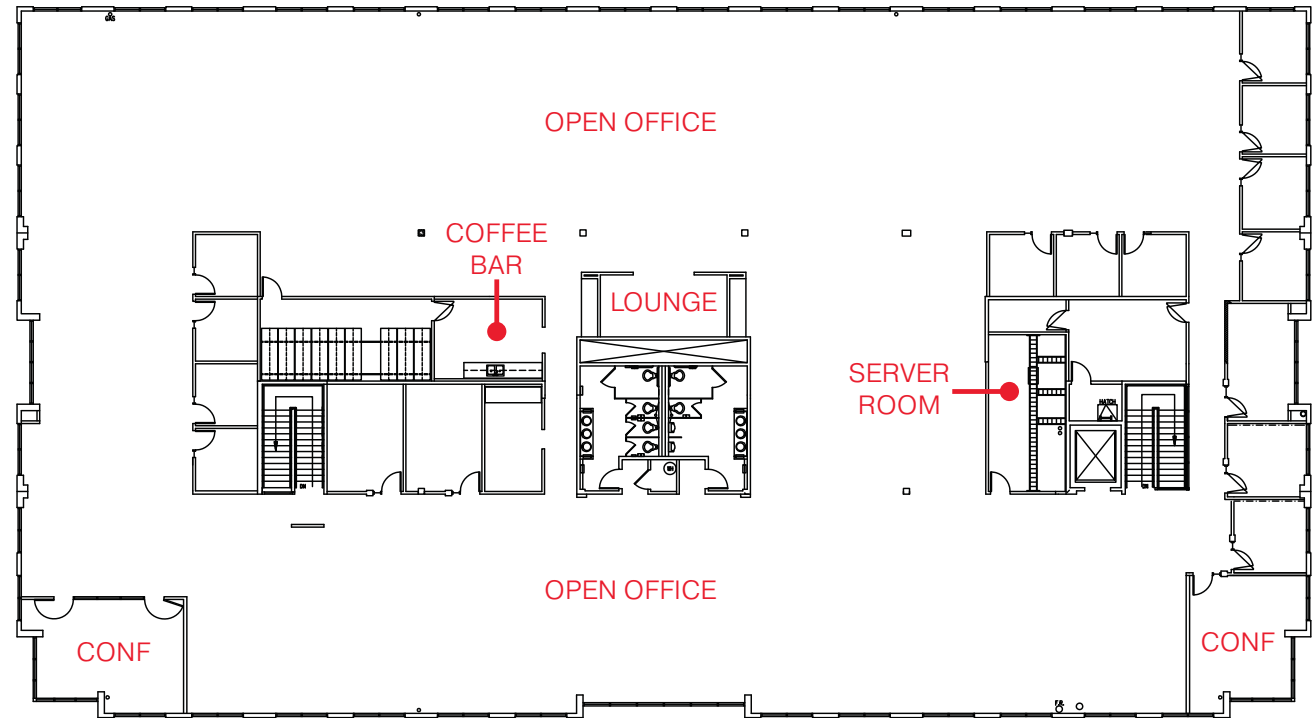


# 490

# FLOOR PLAN

## SECOND FLOOR 182 (6X3) WORKSTATIONS

- 14 Offices
- 4 Conference Rooms
- Server Room
- Coffee Bar



# 490



# NEIGHBORHOOD AERIAL





# NEARBY AMENITIES



490



# TRANSPORTATION MAP



1 Minute Walk to Mountain View Light Rail Station  
5 Minutes on Light Rail to Downtown Mountain View  
52 Minutes from Downtown Mountain View to San Francisco via Caltrain  
15 Minutes to Mountain View Caltrain on MVGO Shuttle

# 490 EAST MIDDLEFIELD

MOUNTAIN VIEW, CA

**KELLY YODER**

408 615 3427

[kelly.yoder@cushwake.com](mailto:kelly.yoder@cushwake.com)

LIC #01821117

**STEVE HORTON**

408 615 3412

[steve.horton@cushwake.com](mailto:steve.horton@cushwake.com)

LIC #01127340

