

8211-8265

SIERRA COLLEGE BLVD, ROSEVILLE, CA

8211

PROPERTY HIGHLIGHTS

- Attractive brick exterior with awnings.
- Multi-tenant business office complex offering tenant use flexibility.
- Easy accessible to I-80 via Douglas Blvd. or Sierra College Blvd.
- Adjacent to established residential in Granite Bay/ Roseville and numerous retail options.

AVAILABILITY

SUITE	BUILDING	RSF
314	8265	5,616

CHRIS SCHWARZE

Executive Director
+1 916 288 4803
chris.schwarze@cushwake.com
CA License #01291261

CHAD COOK, MCR, SIOR, CCIM

Senior Director
+1 916 764 1181
chad.cook@cushwake.com
CA License #01711687

KEVIN PARTINGTON

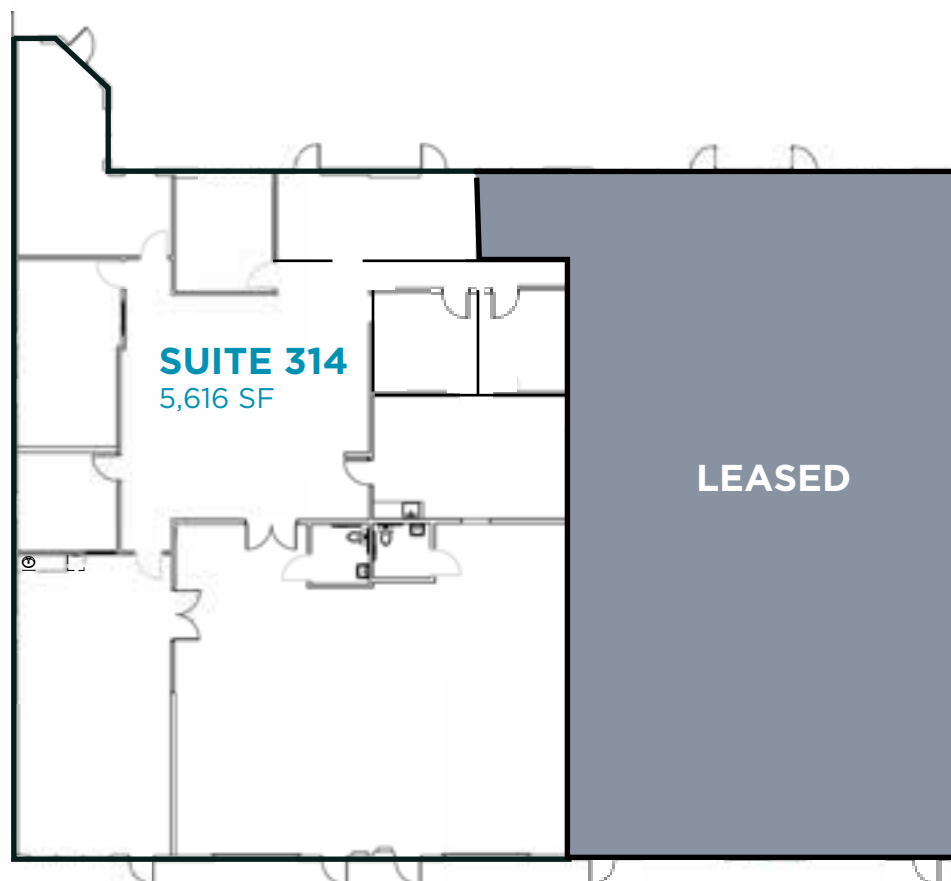
Executive Managing Director
+1 916 288 4807
kevin.partington@cushwake.com
CA License #01199010

CUSHMAN & WAKEFIELD

400 Capitol Mall, Suite 1800
Sacramento, CA 95814
+1 916 288 4800
LIC. #0061633

FLOOR 1

SUITE 314

**CHRIS SCHWARZE**

Executive Director
+1 916 288 4803
chris.schwarze@cushwake.com
CA License #01291261

CHAD COOK, MCR, SIOR, CCIM

Senior Director
+1 916 764 1181
chad.cook@cushwake.com
CA License #01711687

KEVIN PARTINGTON

Executive Managing Director
+1 916 288 4807
kevin.partington@cushwake.com
CA License #01199010

CUSHMAN & WAKEFIELD

400 Capitol Mall, Suite 1800
Sacramento, CA 95814
+1 916 288 4800
LIC. #0061633



FOR LEASE | 8211-8265 SIERRA COLLEGE BLVD, ROSEVILLE, CA

CHRIS SCHWARZE

Executive Director
+1 916 288 4803
chris.schwarze@cushwake.com
CA License #01291261

CHAD COOK, MCR, SIOR, CCIM

Senior Director
+1 916 764 1181
chad.cook@cushwake.com
CA License #01711687

KEVIN PARTINGTON

Executive Managing Director
+1 916 288 4807
kevin.partington@cushwake.com
CA License #01199010

CUSHMAN & WAKEFIELD

400 Capitol Mall, Suite 1800
Sacramento, CA 95814
+1 916 288 4800
LIC. #0061633



©2020 Cushman & Wakefield. All rights reserved. The information contained in this communication is strictly confidential. This information has been obtained from sources believed to be reliable but has not been verified. No warranty or representation, express or implied, is made as to the condition of the property (or properties) referenced herein or as to the accuracy or completeness of the information contained herein, and same is submitted subject to errors, omissions, change of price, rental or other conditions, withdrawal without notice, and to any special listing conditions imposed by the property owner(s). Any projections, opinions or estimates are subject to uncertainty and do not signify current or future property performance.

FOR LEASE | 8211-8265 SIERRA COLLEGE BLVD, ROSEVILLE, CA

CHRIS SCHWARZE

Executive Director
+1 916 288 4803
chris.schwarze@cushwake.com
CA License #01291261

CHAD COOK, MCR, SIOR, CCIM

Senior Director
+1 916 764 1181
chad.cook@cushwake.com
CA License #01711687

KEVIN PARTINGTON

Executive Managing Director
+1 916 288 4807
kevin.partington@cushwake.com
CA License #01199010

CUSHMAN & WAKEFIELD

400 Capitol Mall, Suite 1800
Sacramento, CA 95814
+1 916 288 4800
LIC. #0061633