

# MISSION BREWERY

## Plaza



1775, 1785-1795 HANCOCK STREET | 2120 & 2150 W. WASHINGTON STREET

Experience a true creative-historic office environment that connects your employees to walkable dining, convenient parking and on-site public transportation.



# HIGHLIGHTS



One of San Diego's historic building campuses with freeway visibility



Freeway visible building and monument signage (select availability)



A 101,814 square foot, four (4) building campus offering scalable suite options ranging from 900 - 10,000 square feet



Skip traffic and commute directly to the office with on-site trolley access to the Washington/Hancock Trolley Stop



Underground parking available with ample parking (3 per 1,000 USF) & EV Car Charging Stations on-site



Open to structure ceilings throughout select suites and with expansive clear heights and sky lights



Original brick exteriors and interiors that allow for a truly creative office environment



Immediate access to and from I-5, and within minutes of I-8, Downtown, and San Diego International Airport.



On-site ownership and property management



Walking distance to the San Diego International Restaurant Row featuring Blue Water Seafood, Lucha Libre, Rubicon Deli, Saffron Thai, El Indio, & many more





# A RICH HISTORY

---

Mission Brewery Plaza is a historic office building in the Middletown neighborhood of San Diego. Built from 1912 to 1913, the brewery was originally operated by the San Diego Consolidated Brewing Company and is still considered the one of the oldest original brewery structures in San Diego. Mission Brewery Plaza had since been restored in 1987 and re-adapted as a creative-office conversion project that provides flexibility and scalable growth for a multitude of tenant size ranges.



# CURRENT AVAILABILITY

## 2150 W. WASHINGTON STREET:

### SUITE 104:

963 SF

### SUITE 110:

1,096 SF\*

### SUITE 112:

1,863 SF\*

### SUITE 113:

2,818 SF  
avail. October 2026

### SUITE 201:

630 SF

*\*Both Suite 110 & 112 are contiguous up to 2,959 SF*

## 1775 HANCOCK STREET:

### SUITE 100:

5,704 SF

### SUITE 170:

1,310 SF

### SUITE 190:

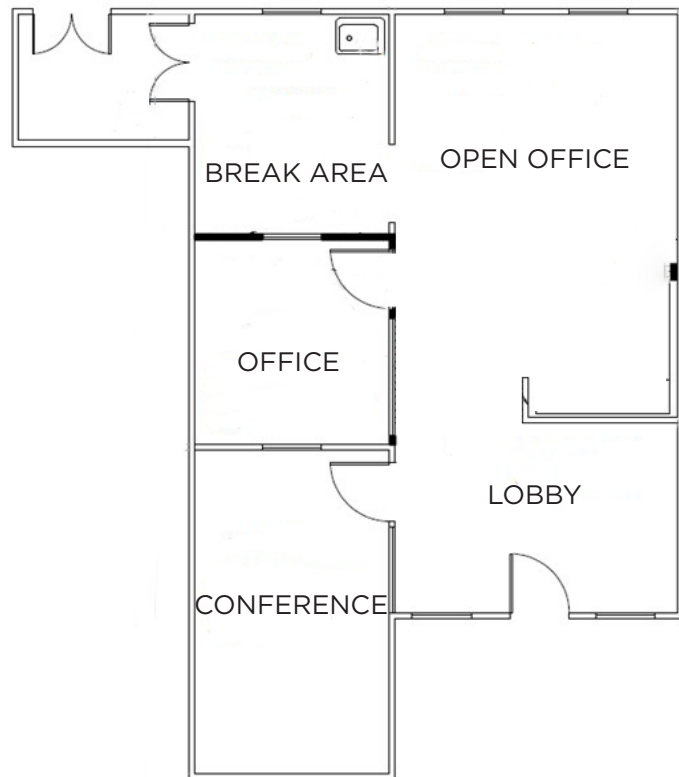
2,321 SF



# 2150 W. WASHINGTON STREET

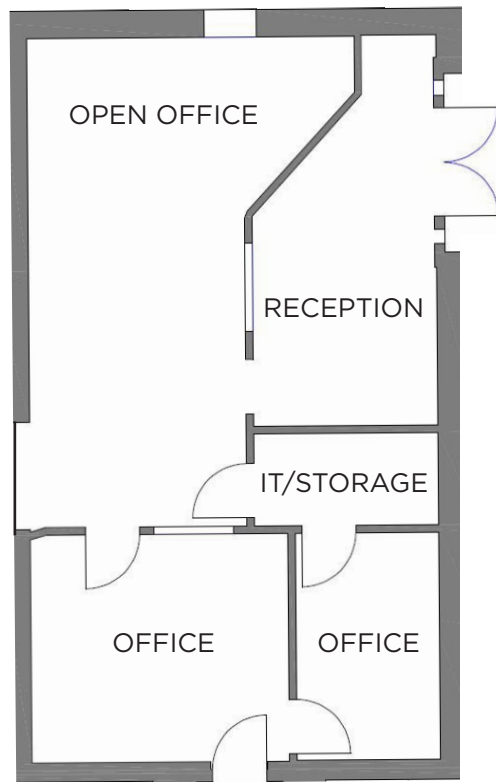
SUITE 104 | 963 SF

---



# 2150 W. WASHINGTON STREET

SUITE 110 | 1,096 SF



- Located directly off first floor lobby
- 2 private offices/huddle rooms
- Dedicated reception area
- Open office area for cubes



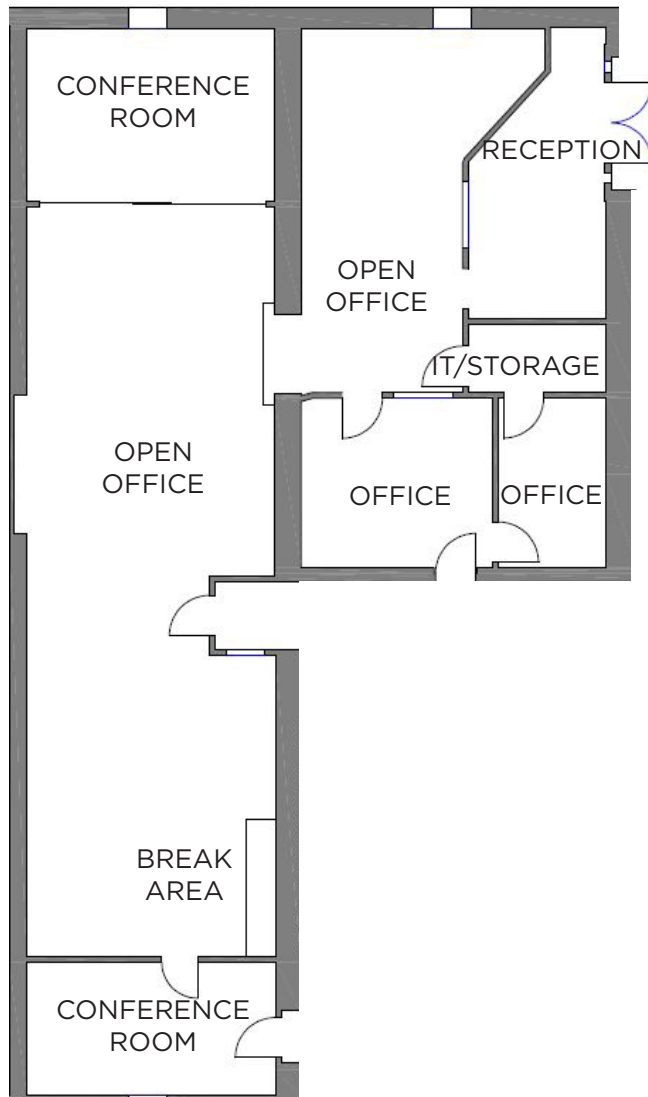
# 2150 W. WASHINGTON STREET

SUITE 112 | 1,863 SF



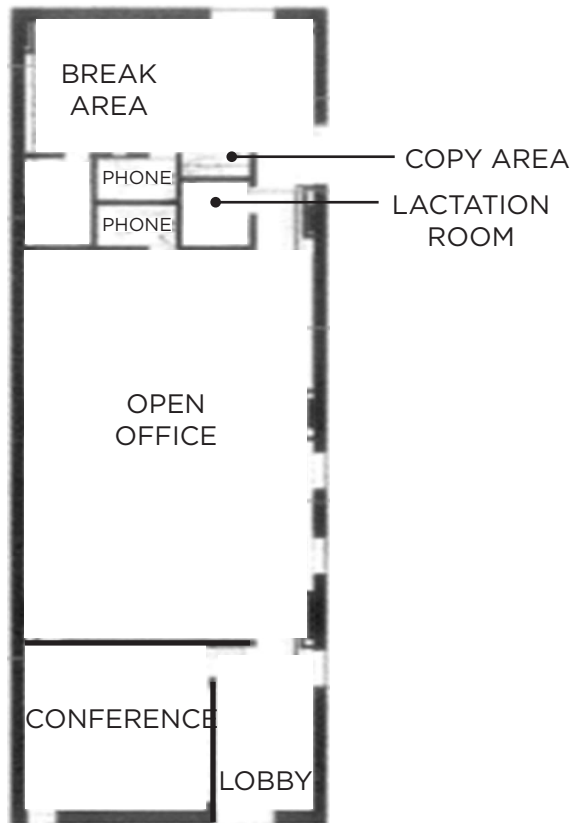
# 2150 W. WASHINGTON STREET

SUITE 110 & 112 | CONTIGUOUS UP TO 2,959 SF



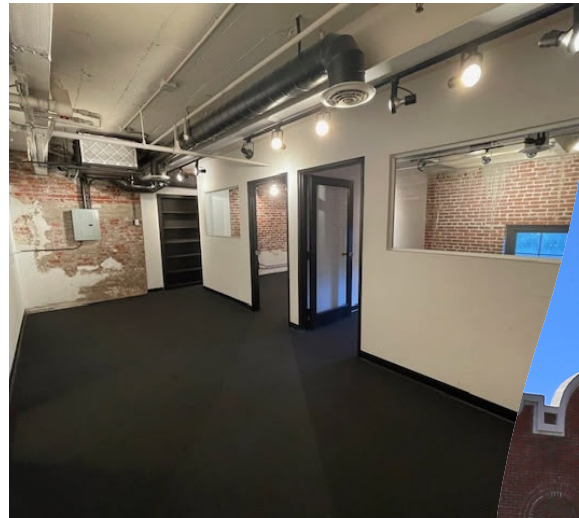
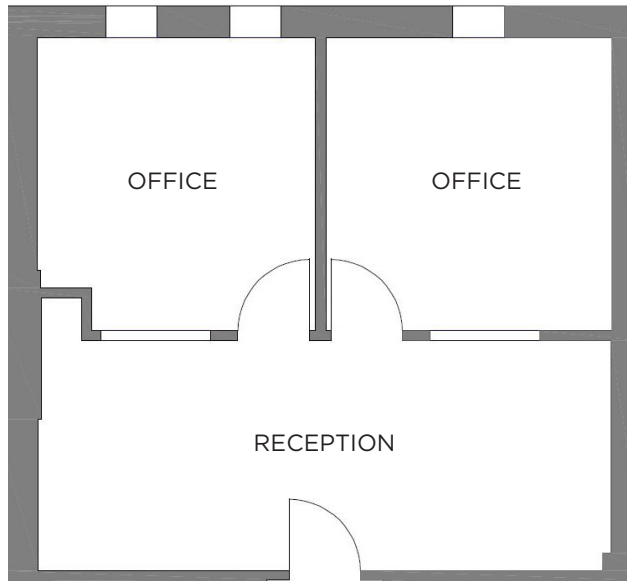
# 2150 W. WASHINGTON STREET

SUITE 113 | 2,818 SF



# 2150 W. WASHINGTON STREET

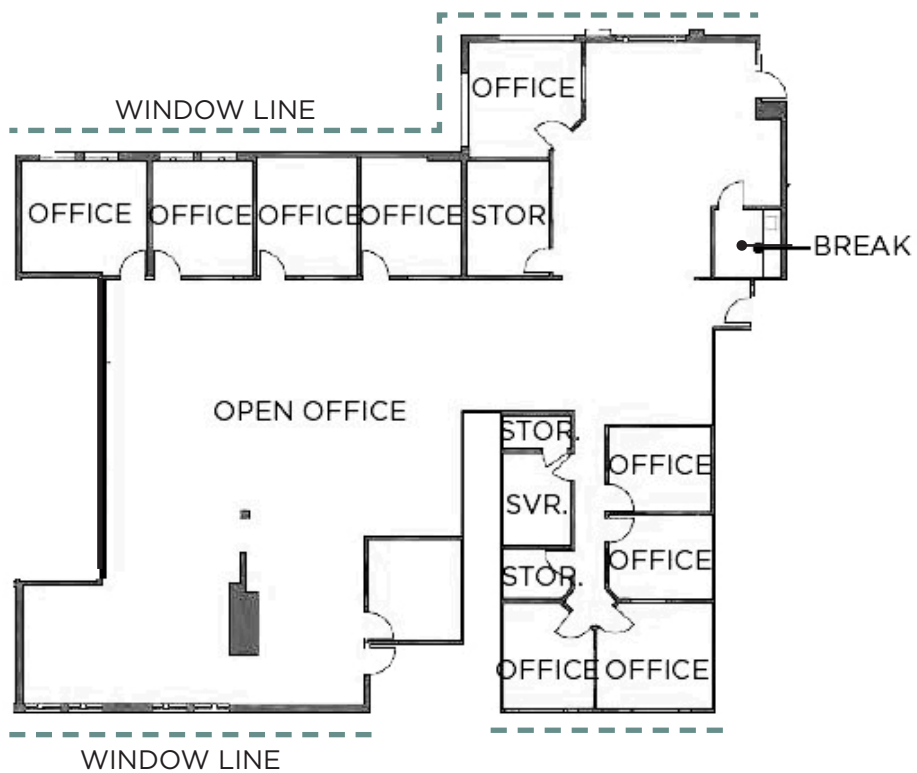
SUITE 201 | 630 SF



# 1775 HANCOCK STREET

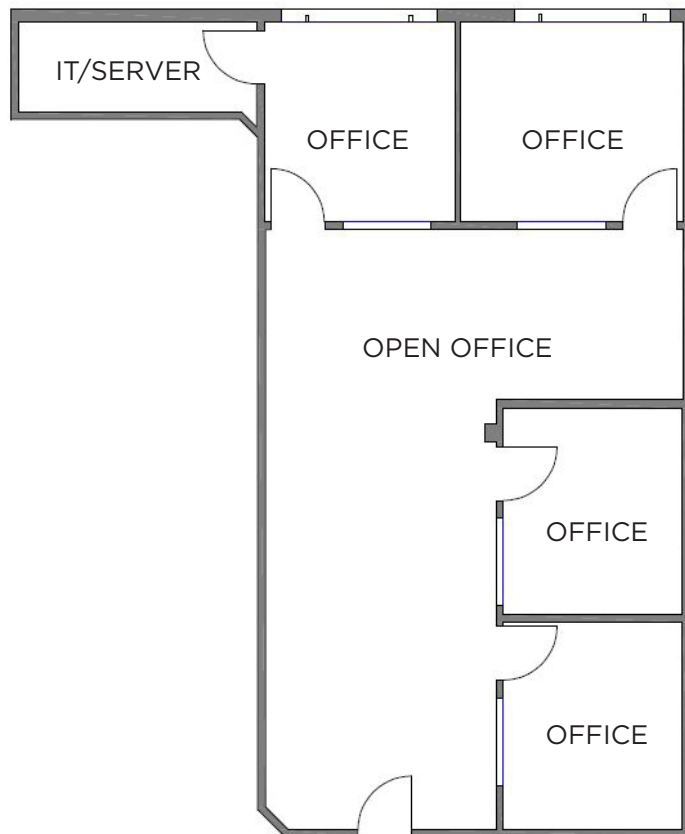
SUITE 100 | 5,704 SF

- Potential creative office build-out
- Building Eyebrow signage available
- Suite entry located near main building lobby.
- Lots of natural light with extensive window-line



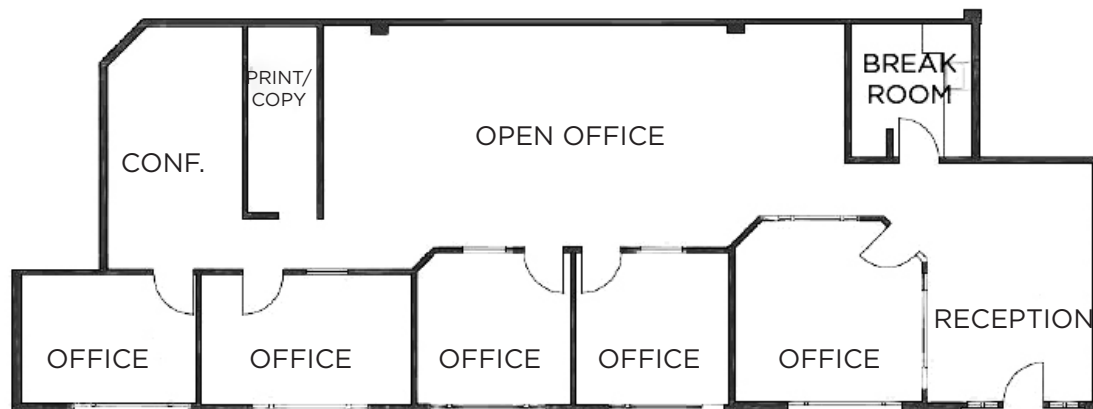
# 1775 HANCOCK STREET

SUITE 170 | 1,310 SF



# 1775 HANCOCK STREET

SUITE 190 | 2,321 SF

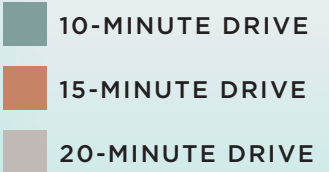
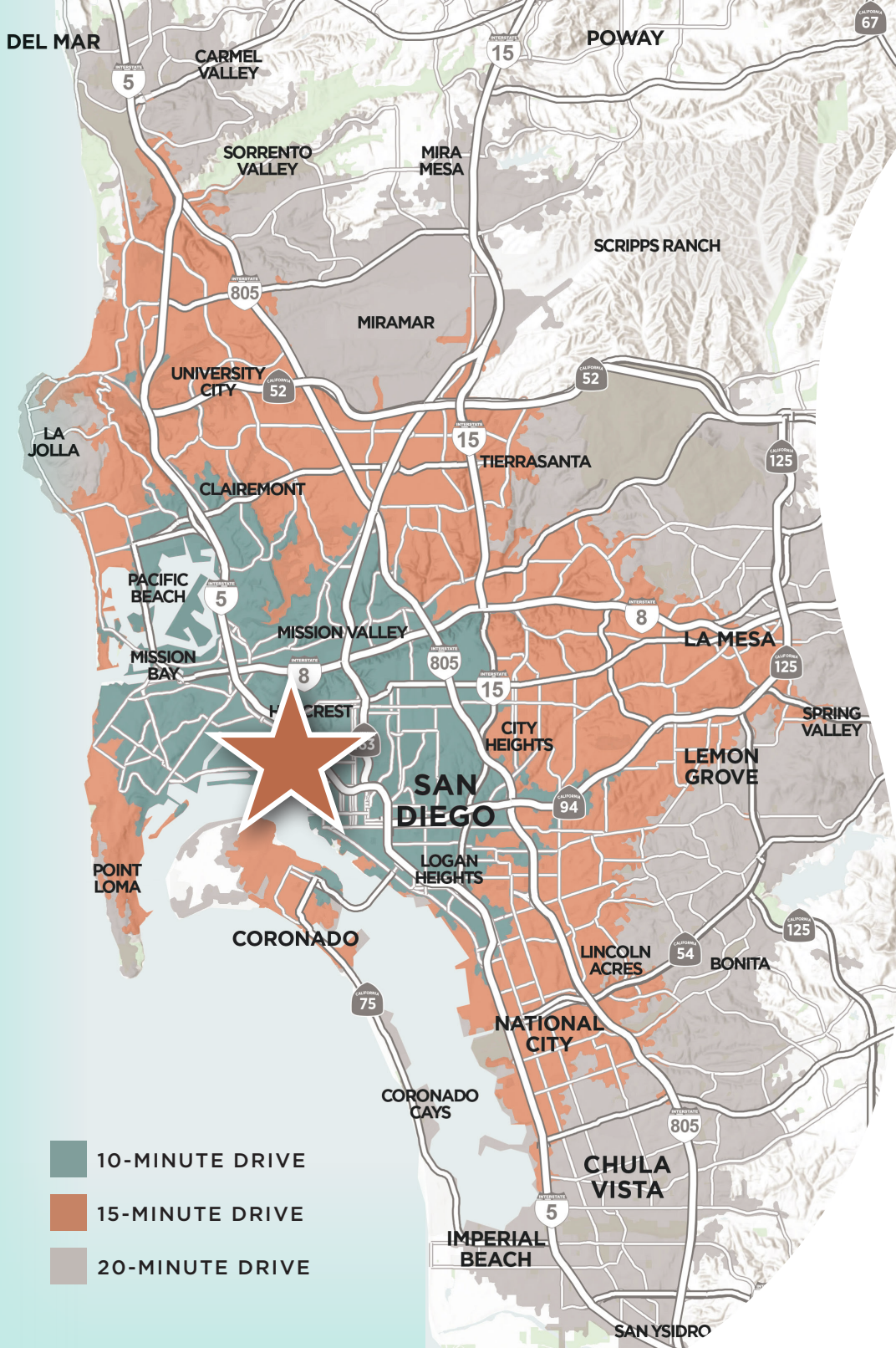


# AMENITIES

## MISSION BREWERY *Plaza*

The map shows the location of Mission Brewery Plaza at the intersection of Pacific Hwy and Washington St. A central star icon marks the brewery's location. Callout boxes provide details on nearby amenities:

- Within Walking Distance:**
  - RUBICON DELI
  - PIZZA E BIRRA
  - Karimas Mexican Seafood Cuisine
  - El Indio Mexican Restaurant & Catering
  - SHAKESPEARE PUB SAN DIEGO, CA
  - Saffron THAI
  - BLUE WATER Seafood Market & Grill
- Other Amenities:**
  - cafe Coyote
  - Don Pietro
  - THE CONGRESS CAFE
  - TUETANO TAQUERIA
  - El Charro MEXICAN DINING
  - San Diego International Airport
  - Balboa Park
  - San Diego, CA
- Restaurants and Cafes:**
  - Breakfast Republic
  - SLATERS 50/50 BACON BURGERS BEER
  - Luna Grill mediterranean kitchen
  - Fig Tree Cafe a california eatery
  - Con Pane
  - tendergreens
  - IKIRU SUSHI DELIVERY
  - GoAmigo Coffee Co.
  - zinqué (zin-kae)
  - BIRD ROCK COFFEE ROASTERS CALIFORNIA
  - WOLFIE'S CAROUSEL BAR
  - JAMES COFFEE CO.
  - HERB & WOOD
  - CRACK SHACK



# LOCATION

## MID-COAST TROLLEY

The Mid-Coast Trolley was recently extended with the Blue Line Trolley service from Downtown to the UTC/University City areas, connecting the major activity centers such as Old Town, UC San Diego, and Westfield UTC.

## DRIVE TIMES

- Downtown:** 6 Minutes / 1.5 Miles
- SD International Airport:** 7 Minutes / 2.1 Miles
- Mission Valley:** 7 Minutes / 2.2 Miles
- Liberty Station/Point Loma:** 8 Minutes / 2.8 Miles
- UTC:** 17 Minutes / 11.6 Miles

For more information,  
please contact:

# MISSION BREWERY

## Plaza

### MIKE NOVKOV

Direct: **858.546.5412**  
**mike.novkov@cushwake.com**  
CA Lic # 01890388

### CONNOR WIECK

Direct: **858.546.5487**  
**connor.wieck@cushwake.com**  
CA Lic # 02007940



©2026 Cushman & Wakefield. All rights reserved. The information contained in this communication is strictly confidential. This information has been obtained from sources believed to be reliable but has not been verified. NO WARRANTY OR REPRESENTATION, EXPRESS OR IMPLIED, IS MADE AS TO THE CONDITION OF THE PROPERTY (OR PROPERTIES) REFERENCED HEREIN OR AS TO THE ACCURACY OR COMPLETENESS OF THE INFORMATION CONTAINED HEREIN, AND SAME IS SUBMITTED SUBJECT TO ERRORS, OMISSIONS, CHANGE OF PRICE, RENTAL OR OTHER CONDITIONS, WITHDRAWAL WITHOUT NOTICE, AND TO ANY SPECIAL LISTING CONDITIONS IMPOSED BY THE PROPERTY OWNER(S). ANY PROJECTIONS, OPINIONS OR ESTIMATES ARE SUBJECT TO UNCERTAINTY AND DO NOT SIGNIFY CURRENT OR FUTURE PROPERTY PERFORMANCE. COE-PM-WEST- 03/25/26

1775, 1785-1795 HANCOCK STREET | 2120 & 2150 W. WASHINGTON STREET

