



GATEWAY
OFFICE



UP TO 45,000 SF AVAILABLE
FOR SALE OR LEASE

9800 BREN ROAD | MINNETONKA, MN



YOUR NAME HERE

 HIGHWAY 169
SIGNAGE
OPPORTUNITY



GATEWAY
OFFICE

ADDRESS	9800 BREN ROAD MINNETONKA, MN
TOTAL	71,000 SF
AVAILABLE	45,000 SF
STORIES	4
LOT	5 Acres
NET RATE	\$14.00/SF
OP EX/TAX	\$9.99/SF



Near bus stops



Quick access to Hwys 62,
169, 212, 7 and I-494



4/1,000 parking
Underground parking



Nearby dining and
retail options



Immediate access to
6 Mile Trail System



Building signage
opportunity



Natural light from
continuous windows



Lush scenic suburban
surrounding and views



COFFEE & RESTAURANTS
within 1 mile

- | | |
|------------------------|----------------|
| Caribou Coffee | Chipotle |
| Olives Fresh Pizza Bar | Jimmy John's |
| Blue Birch | Starbucks |
| Scoreboard Bar & Grill | Woody's Grille |
| YoYo Donuts | Lucky Inn |
| yum! Kitchen & Bakery | HAVEN |
| Jimmy's Kitchen | Campiello |
| My Burger | Bay Leaf |



EFFICIENTLY DRIVE RESULTS

With excellent natural light, an efficient floorplate and 9 ft ceiling, you can create the perfect environment that reflects your brand and supports your company culture.

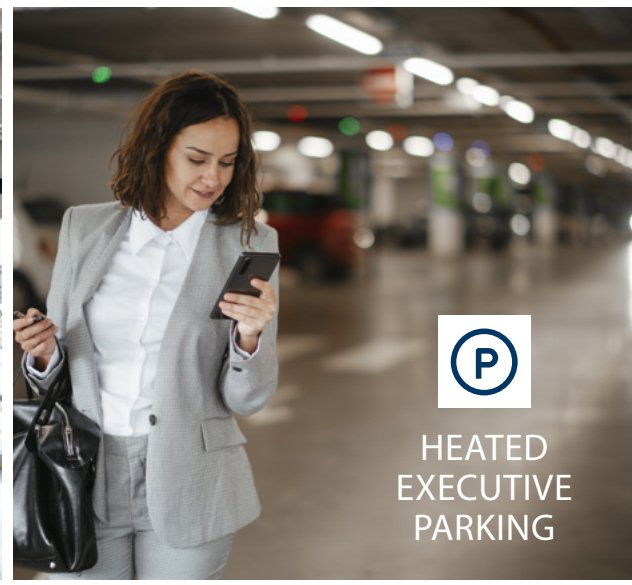
Gateway Office offers the best of everything creative and forward-thinking office users desire today.



25% MORE
NATURAL LIGHT
THAN AVERAGE
OFFICES



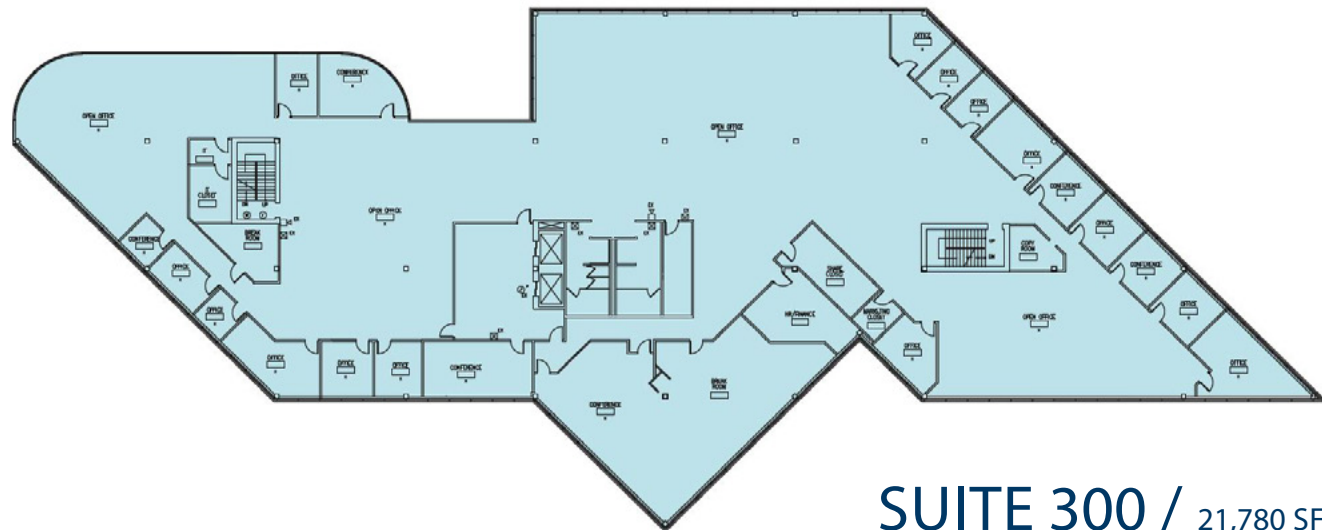
9 FT CEILING
HEIGHTS



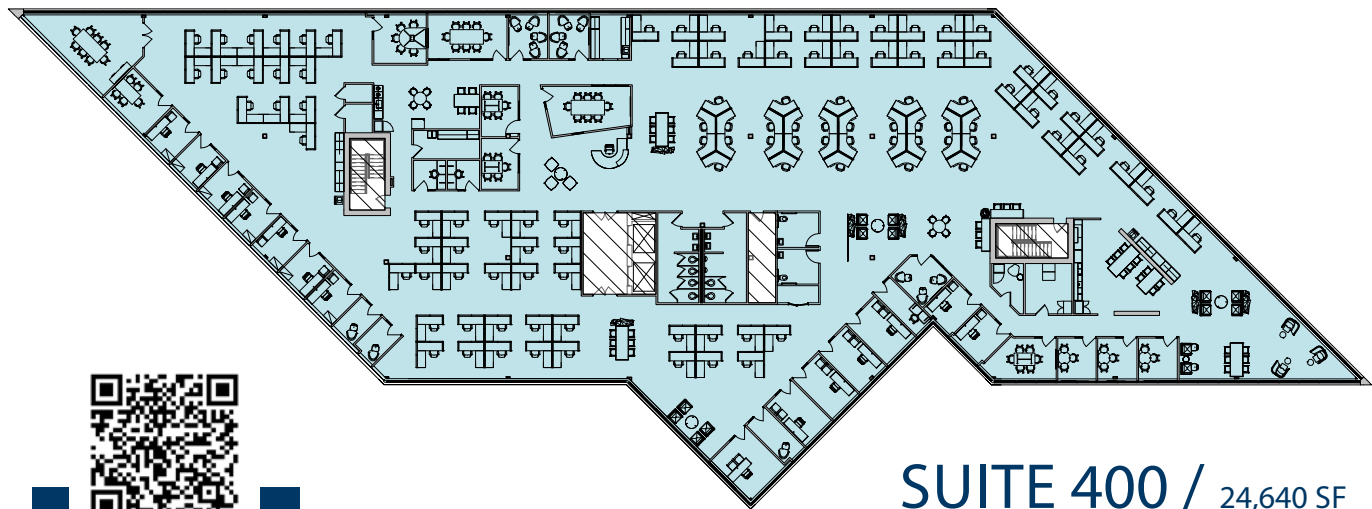
HEATED
EXECUTIVE
PARKING



CONTINUOUS
WINDOWS



SUITE 300 / 21,780 SF



SUITE 400 / 24,640 SF

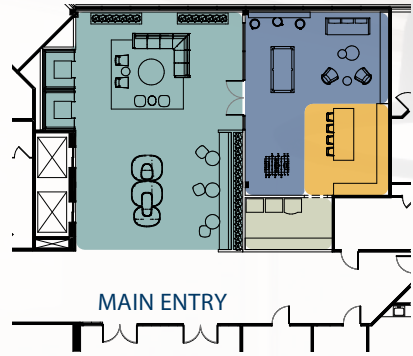
SAMPLE FIT PLAN

SEAT TYPE	SEAT COUNT
Office	14
Workstations	110
Conference	50
Huddle/Focus	26
Open Collab	45



SCAN TO VIEW
WALKTHROUGH

Coming Soon!
NEW LOBBY AND
TENANT LOUNGE



MAIN LOBBY



LOUNGE & GAME ROOM





GATEWAY
OFFICE

LET'S CONNECT TODAY

SAM GLEASON
952 241 1111
sam.gleason@cushwake.com

GRACE PERILLO
952 837 8693
grace.perillo@cushwake.com

