

900 THIRD AVE



MIDTOWN EAST RETAIL OPPORTUNITIES

LOCATED AT THE BASE OF A 600,000 SF CLASS A OFFICE BUILDING

THIRD AVENUE BETWEEN E. 54TH AND 55TH STREETS

[TAKE A VIRTUAL TOUR!](#)

[SPACE A](#)

[SPACE B](#)

	GROUND FLOOR	LOWER LEVEL	SUB-LOWER	MEZZANINE	TOTAL	COMMENTS
SPACE A	2,946 SF		1,956 SF	666 SF	5,568 SF	<ul style="list-style-type: none">• 35 feet of all-glass frontage.• Adjacent to the building lobby.• Column-free, with 25-foot ceiling heights.• Direct connection to lower level via existing ADA elevator.• Venting is possible.
SPACE B	300 SF	4,800 SF			5,100 SF	<ul style="list-style-type: none">• Fully built gym installation including boxing bags, ring, locker rooms, etc.• Vacant and ready for immediate occupancy.• Can be combined with the ground floor retail.• Potential for different configurations/divisions.

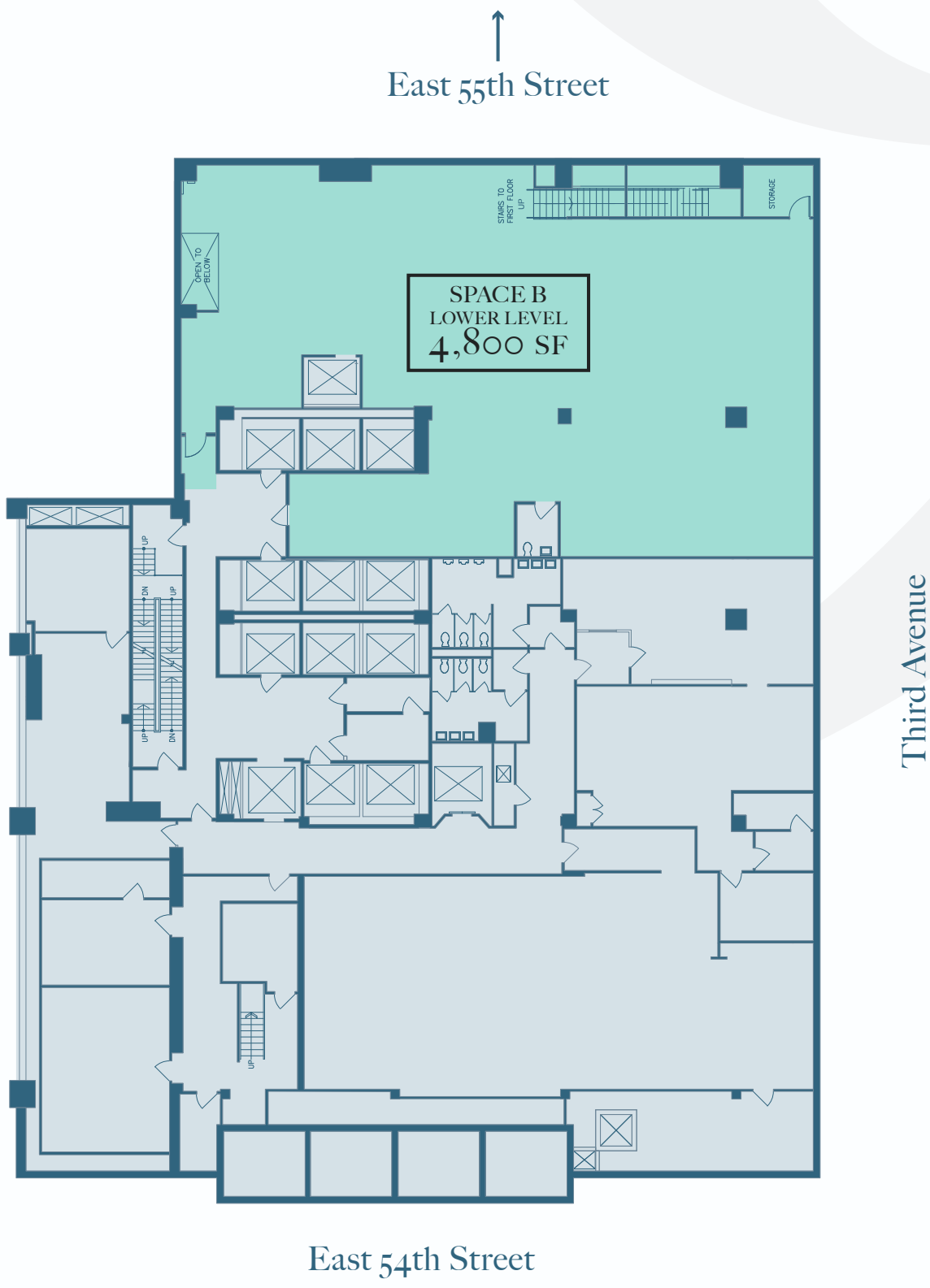
GROUND FLOOR

A: 2,946 sf B: 300 sf



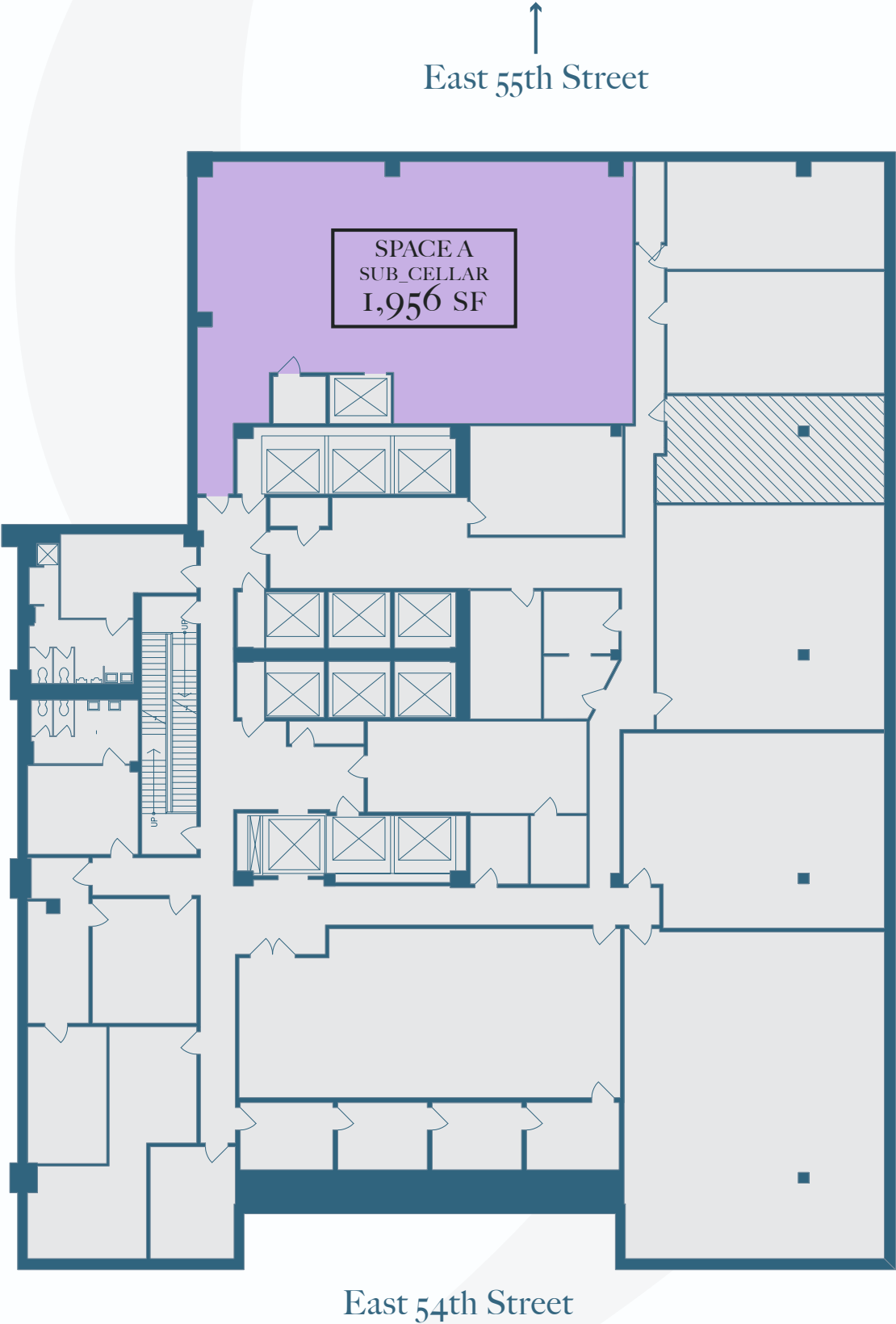
LOWER LEVEL

B: 4,800 sf



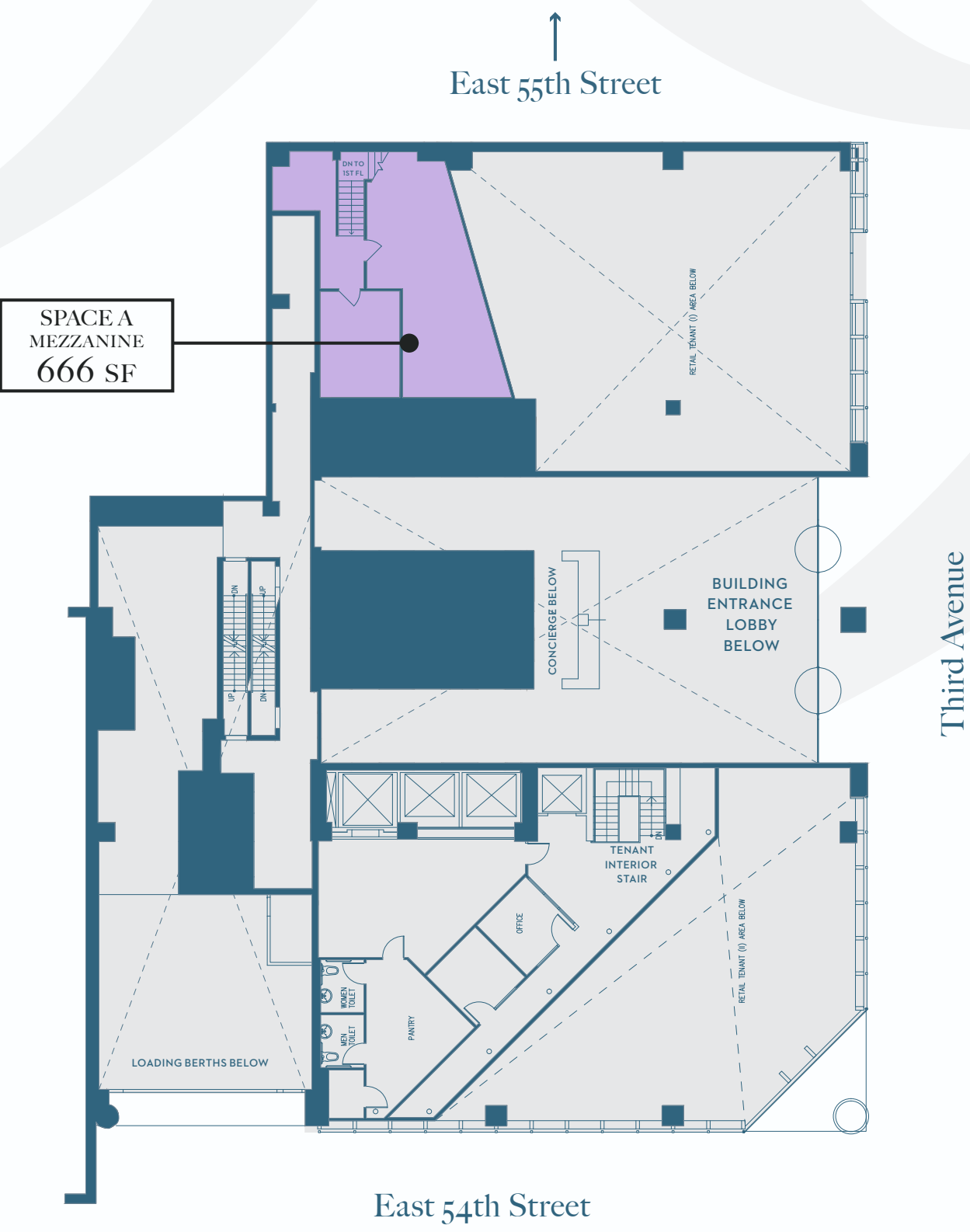
SUB-LOWER

A: 1,956 sf



MEZZANINE

A: 666 sf



900

THIRD AVE

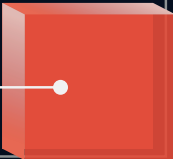
E 56th Street

BUOY ONE ♦
CASSIANDOS PIZZA ♦
TOASTIES ♦
PIG 'N' WHISTLE ♦
GOGI GRILL ♦
DUNKIN' DONUTS ♦
1 HOUR PHOTO ♦
T-MOBILE ♦

♦ CHASE
♦ TUFENKIAN ARTISAN CARPETS
♦ P.J. CLARKE'S

E 55th Street

CHIPOTLE ♦
DA-NAPOLI PIZZA ♦



♦ POST OFFICE

E 54th Street

HILLSTONE ♦
PRET A MANGER ♦
GREGORY'S COFFEE ♦
TD BANK ♦

♦ CRIMSON & RYE
♦ LIPSTICK BUILDING

E 53rd Street

DUANE READE ♦
COURTYARD MARRIOTT ♦
SUBWAY ♦
WELLS FARGO ♦

♦ STARBUCKS
♦ POPULAR COMMUNITY BANK
♦ AVAILABLE

E 52nd Street

♦ CHIPOTLE ♦
♦ POTBELLY SANDWICH SHOP ♦
♦ ANN TAYLOR ♦
♦ CHASE ♦

♦ CAPITAL ONE BANK ♦
♦ HILTON ♦
♦ MODELL'S

E 51st Street

JUICE PRESS ♦
COHEN'S ♦
FASHION OPTICAL ♦
MCDONALD'S ♦
GRACEBURG NAILS & SPA ♦
VERIZON ♦

♦ PANDA EXPRESS
♦ ESSA BAGEL
♦ DILL & PARSLEY
♦ DISHES
♦ SUPER RUNNER'S SHOP
♦ BANK OF AMERICA
♦ GNC
♦ DOS CAMINOS

E 50th Street

STAPLES ♦

♦ GYUKAKU
♦ TO BE
♦ BONA VINOS WINES
♦ MADISON AVENUE JEWELERS
♦ ENTRANCE TO CRYSTAL PAVILION
♦ BONA VINOS WINES
♦ SMITH & WOLLENSKY

CITIBANK ♦

E 49th Street

THIRD AVENUE



Please contact us for retail leasing inquiries

Alan Schmerzler

alan.schmerzler@cushwake.com

212 841 5930

Steven Soutendijk

steven.soutendijk@cushwake.com

212 713 6845

Molly Sandza

molly.sandza@cushwake.com

212 841 7955

