

900 THIRD AVE

MIDTOWN EAST RETAIL OPPORTUNITY

AT THE BASE OF A 600,000 SF CLASS A OFFICE BUILDING- BETWEEN 54TH & 55TH STREETS



RETAIL OPPORTUNITY

900
THIRD AVE



**TAKE A
VIRTUAL
TOUR**

SIZE

GROUND	2,946 SF
SUB LOWER	1,956 SF
MEZZANINE	666 SF
TOTAL	5,568 SF

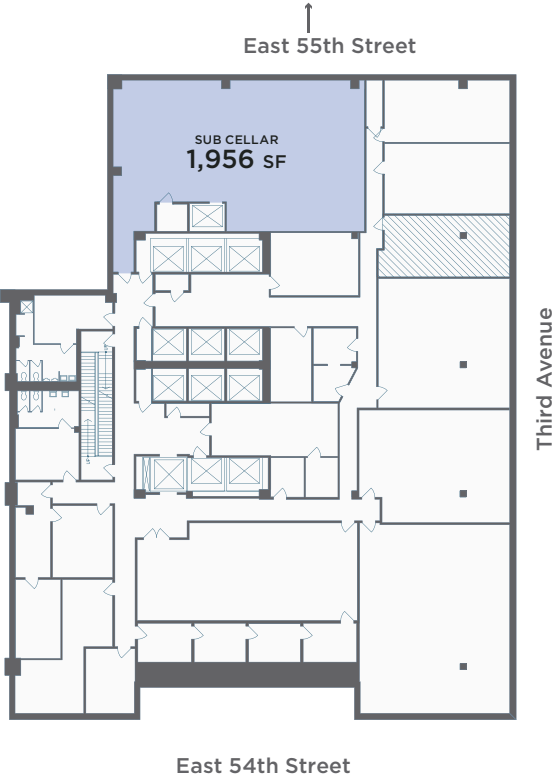
COMMENTS

- 35 feet of all-glass frontage.
- Adjacent to the building lobby.
- Column-free, with 25-foot ceiling heights.
- Direct connection to lower level via existing ADA elevator.
- Venting is possible.

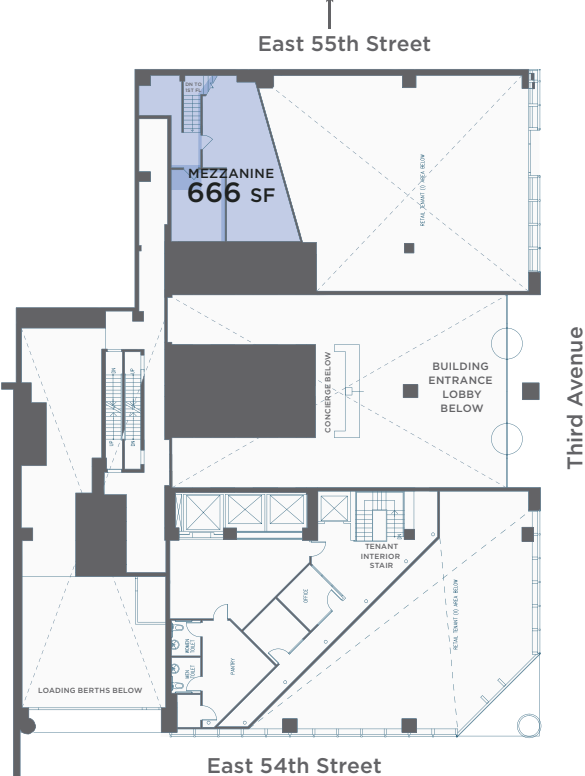
GROUND
2,946 SF



SUB LOWER
1,956SF



MEZZANINE
666SF



NEIGHBORHOOD ATTRACTIONS

900
THIRD AVE

					E 56TH ST
DANTE'S CELLAR	LE CAFE COFFEE JUST SALAD UNI K WAX	CASSIANO'S PIZZA AMY FONTAINE'S H&R BLOCK DUNKIN' T-MOBILE	CHASE P.J. CLARKE'S	NAYA MEZZE & GRILL DRAUGHT 55 SPICE MATRA	E 55TH ST
DOS TOROS DUNKIN' CENTRAL SYNAGOGUE	FEDEX OFFICE CHOP & GO GLAZE TERIYAKI STARBUCKS	CHIPOTLE F45 900	POST OFFICE	ANGELO'S PIZZA PINKBERRY	E 54TH ST
CVS SHAKE SHACK	TMPL THE HUGH FOOD HALL (15 VENDORS)	PRET A MANGER GREGORY'S COFFEE TD BANK	LIPSTICK BUILDING EMF Lexington Ave/53rd Street Station	EQUINOX BLINK FITNESS JUICE PRESS EMACK & BOILIO'S ICE CREAM	E 53RD ST
TO BE CARROT EXPRESS LE JARDINIER	SWEETGREEN JUICE GENERATION AMAZON GO SUGARFISH	DUANE READE COURTYARD MARRIOTT WELLS FARGO	STARBUCKS DOR L'DOR	ROSA MEXICANO PETCO	E 52ND ST
51st Street Station 6	PARIS BAGUETTE CHIPOTLE DUANE READE	DIG POTBELLY CHASE	CAPITAL ONE BANK FEDEX OFFICE	CVS BUTTERCUP BAKESHOP	E 51ST ST
URBANSPEACE SCHNIPPER'S STARBUCKS	FRESH & CO	REPUBLIC BANK MCDONALD'S	PANDA EXPRESS ESS-A-BAGEL DILL & PARSLEY DISHES	CRAVE FISH BAR CORNERSTONE TAVERN	E 50TH ST
WALDORF ASTORIA		STAPLES	SUPPER RUNNERS MADISON JEWELERS SMITH & WOLLENSKY	BLANK SLATE COFFEE + KITCHEN BARNACHO	E 49TH ST

900 THIRD AVE

www.900Third.com

FOR LEASING INFORMATION, PLEASE CONTACT:

ALAN SCHMERZLER

212 841 5930

ALAN.SCHMERZLER@CUSHWAKE.COM

STEVEN SOUTENDIJK

212 713 6845

STEVEN.SOUTENDIJK@CUSHWAKE.COM

SEAN MORAN

212 841 7668

SEAN.MORAN@CUSHWAKE.COM



**CUSHMAN &
WAKEFIELD**



**PARAMOUNT
GROUP**

© 2023 CUSHMAN & WAKEFIELD. ALL RIGHTS RESERVED. THE INFORMATION CONTAINED IN THIS COMMUNICATION IS STRICTLY CONFIDENTIAL. THIS INFORMATION HAS BEEN OBTAINED FROM SOURCES BELIEVED TO BE RELIABLE BUT HAS NOT BEEN VERIFIED. NO WARRANTY OR REPRESENTATION, EXPRESS OR IMPLIED, IS MADE AS TO THE CONDITION OF THE PROPERTY (OR PROPERTIES) REFERENCED HEREIN OR AS TO THE ACCURACY OR COMPLETENESS OF THE INFORMATION CONTAINED HEREIN, AND SAME IS SUBMITTED SUBJECT TO ERRORS, OMISSIONS, CHANGE OF PRICE, RENTAL OR OTHER CONDITIONS, WITHDRAWAL WITHOUT NOTICE, AND TO ANY SPECIAL LISTING CONDITIONS IMPOSED BY THE PROPERTY OWNER(S). ANY PROJECTIONS, OPINIONS OR ESTIMATES ARE SUBJECT TO UNCERTAINTY AND DO NOT SIGNIFY CURRENT OR FUTURE PROPERTY PERFORMANCE.