

FREMONT OFFICE CENTER

39300 CIVIC CENTER DRIVE & 2201 WALNUT AVENUE, FREMONT



SCOTT DEVER
Managing Director

+1 408 615 3457
scott.dever@cushwake.com
LIC. 01890552

WALT STEPHENSON
Executive Director

+1 408 615 3458
walt.stephenson@cushwake.com
LIC. 01793438



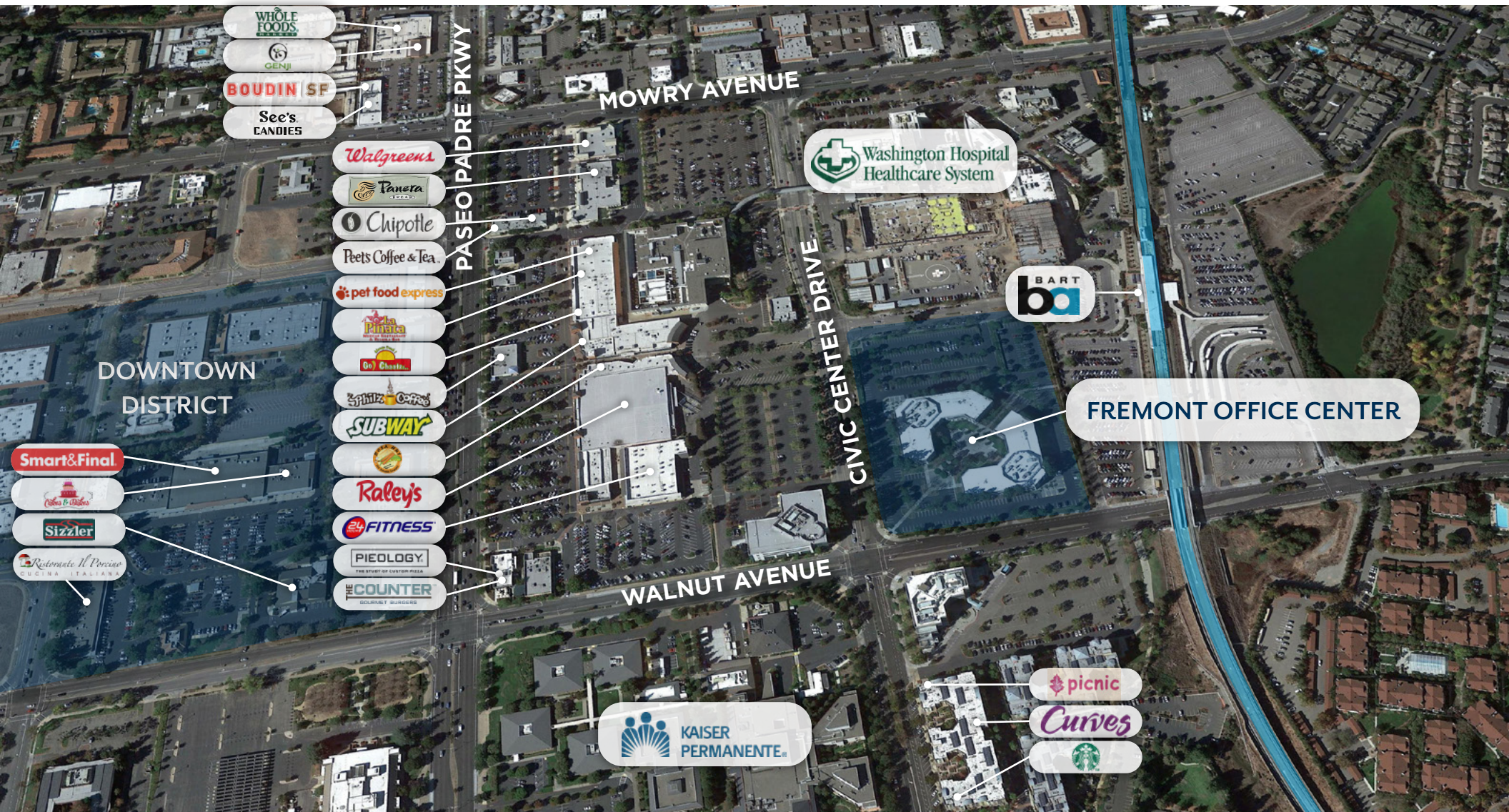
FREMONT OFFICE CENTER



PROPERTY HIGHLIGHTS

- Adjacent to Fremont BART station
- Numerous walkable amenities
- Reputable local ownership
- Onsite services include:
 - Property management
 - Maintenance engineer
 - Day porter
 - Security

FREMONT OFFICE CENTER



IDEAL LOCATION

Fremont Office Center is located within walking distance to numerous restaurants, retailers, and many other nearby amenities. With BART located adjacent to the property, Fremont Office Center offers excellent transportation options.

FREMONT OFFICE CENTER

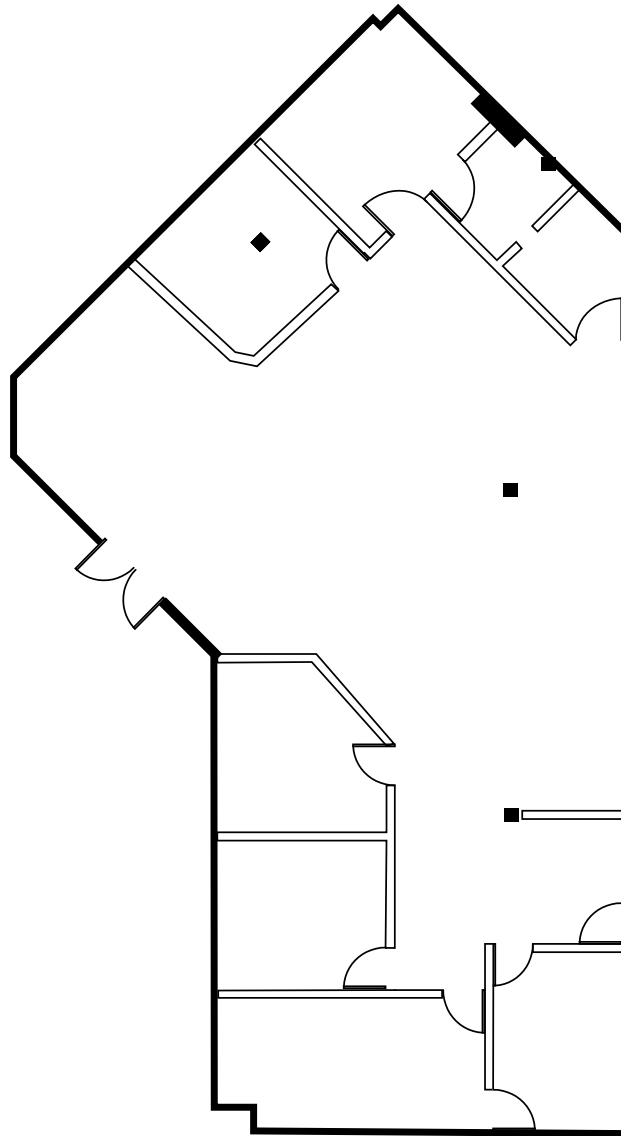
AVAILABILITY

BUILDING	SUITE	AVAILABLE SQUARE FOOTAGE	MAXIMUM CONTIGUOUS SQUARE FOOTAGE
2201 Walnut Avenue	100	2,871	6,205
39300 Civic Center Drive	360	2,903	8,577
2201 Walnut Avenue	110	3,334	6,205
39300 Civic Center Drive	340	5,674	8,577
2201 Walnut Avenue	100-110	6,205	6,205
39300 Civic Center Drive	340-360	8,577	8,577
2201 Walnut Avenue	310	11,081	

FREMONT OFFICE CENTER

**2201 WALNUT AVENUE
SUITE 100**

±2,871 SF

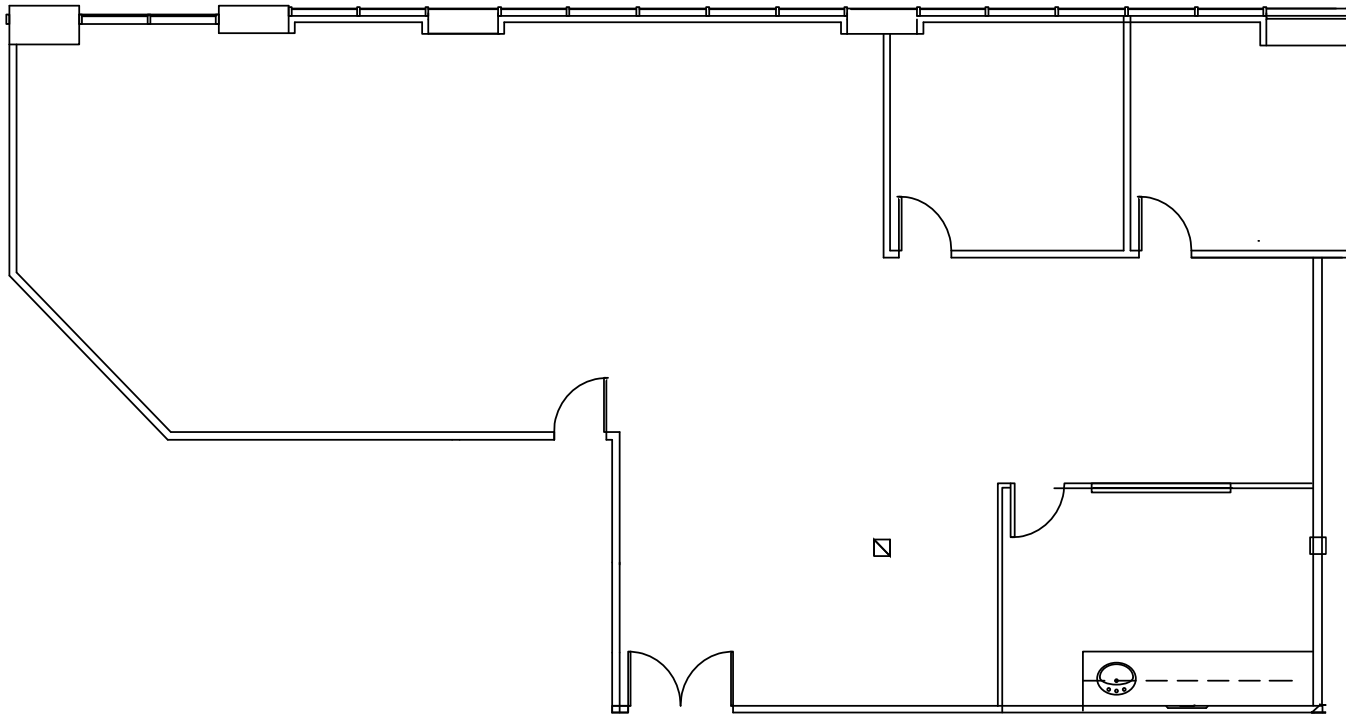


FREMONT OFFICE CENTER

39300 CIVIC CENTER DRIVE SUITE 360

±2,903 SF

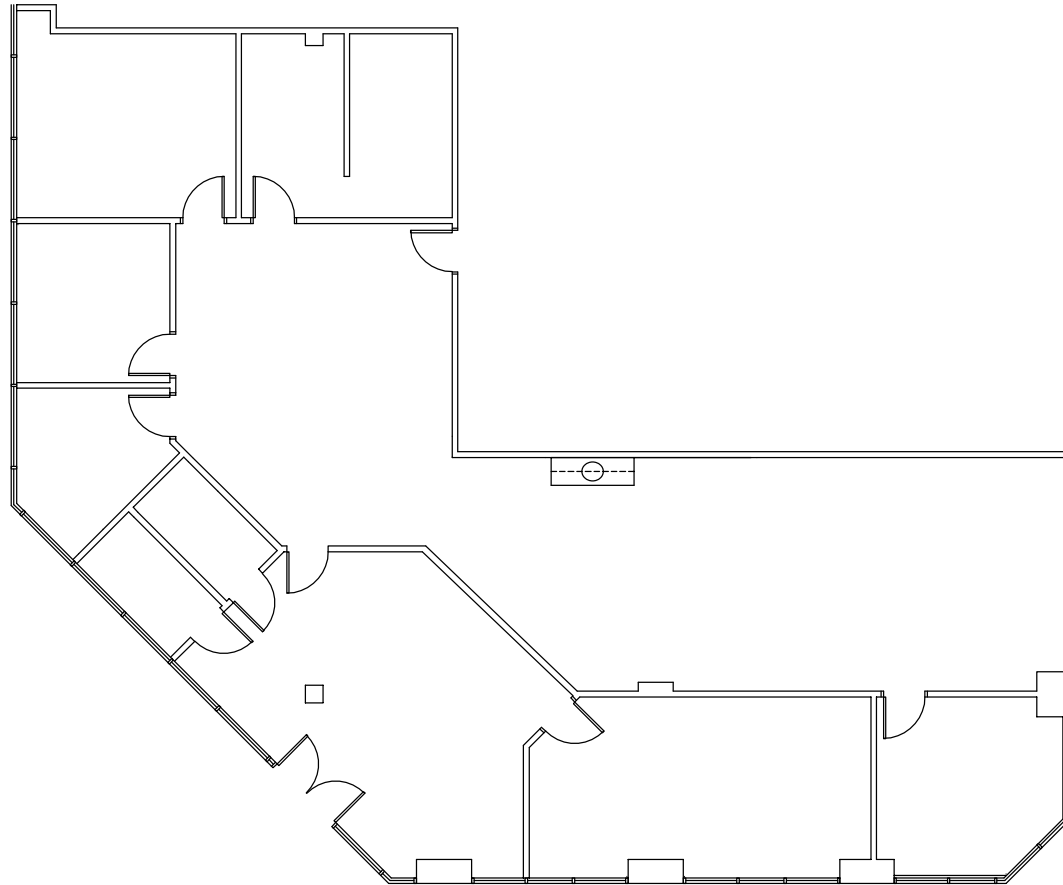
LEASES THROUGH FEBRUARY 28, 2027



FREMONT OFFICE CENTER

**2201 WALNUT AVENUE
SUITE 110**

±3,334 SF

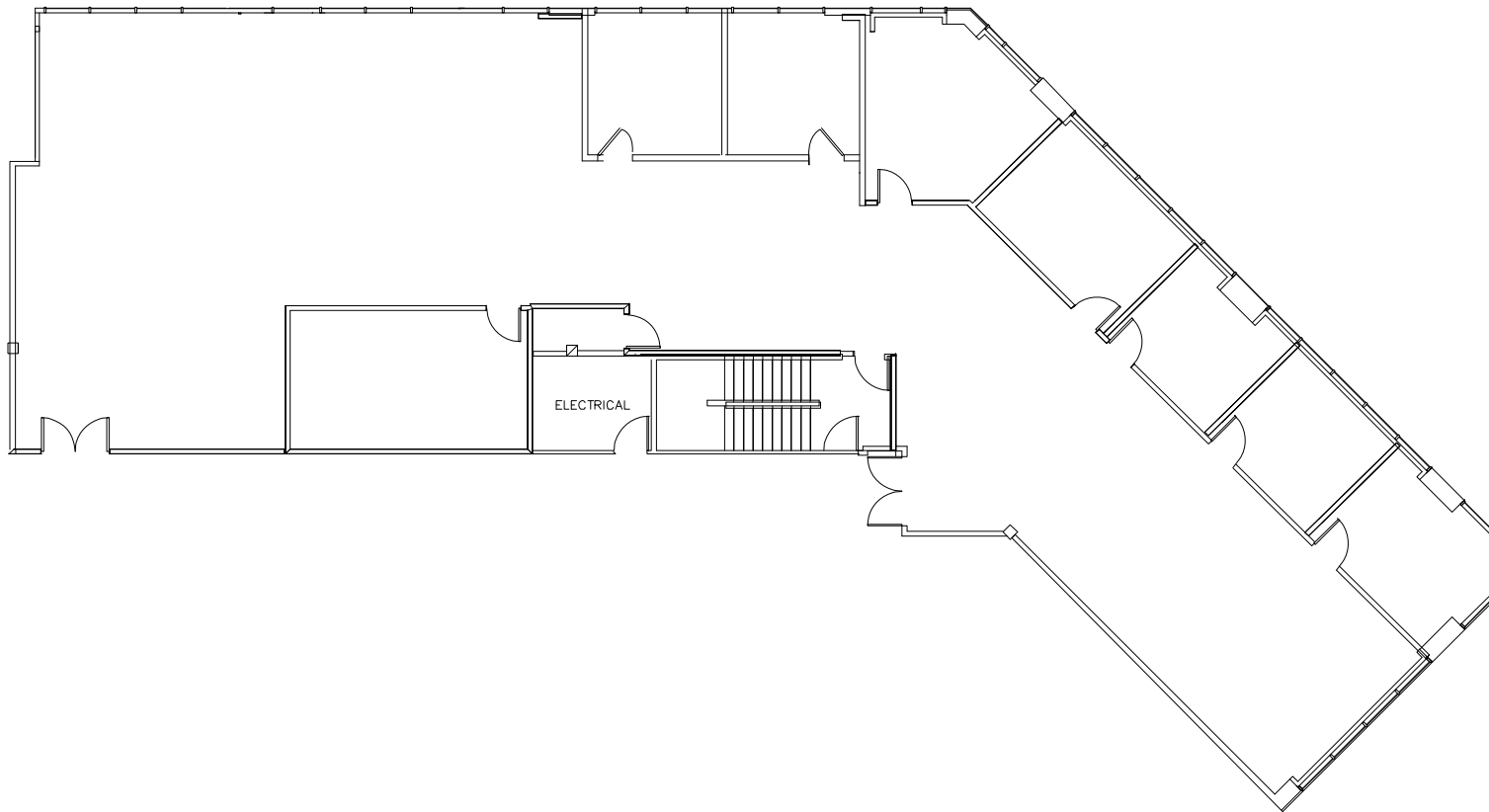


FREMONT OFFICE CENTER

39300 CIVIC CENTER DRIVE SUITE 340

±5,674 SF

LEASES THROUGH FEBRUARY 28, 2027

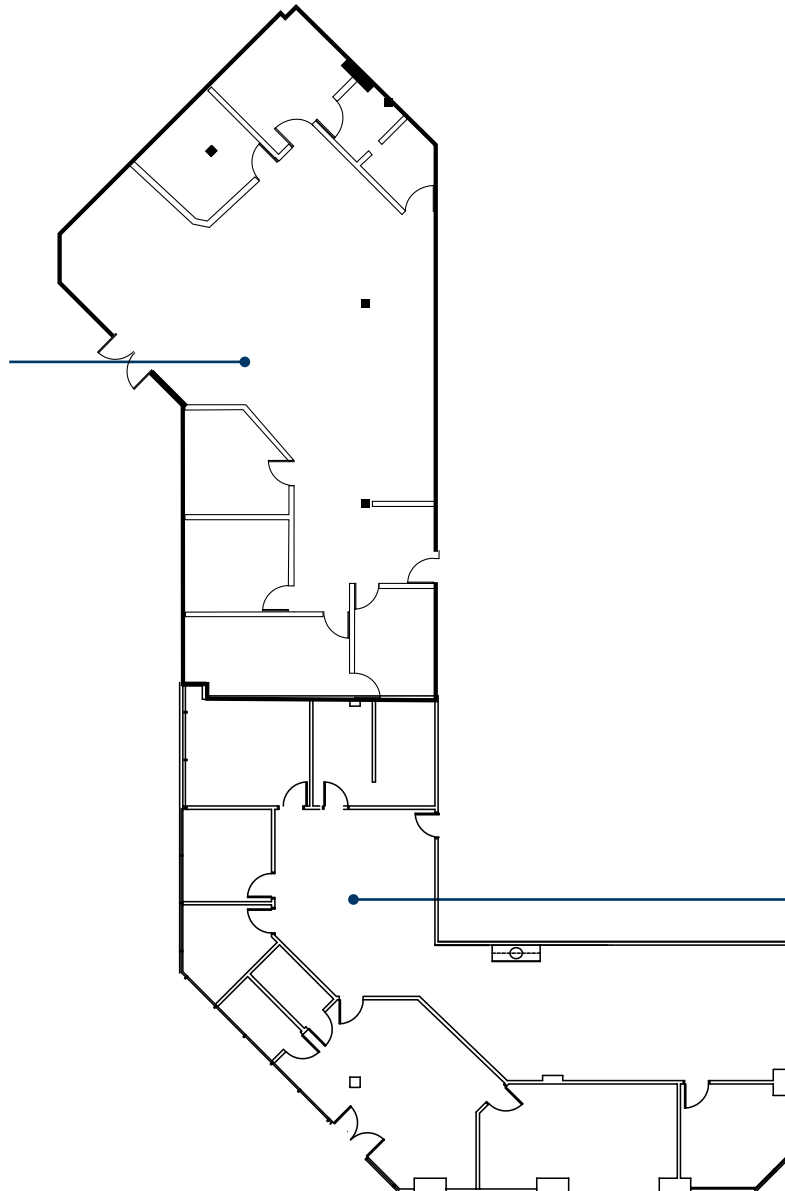


FREMONT OFFICE CENTER

2201 WALNUT AVENUE SUITE 100-110

±6,205 TOTAL SF

SUITE 100
±2,871 SF



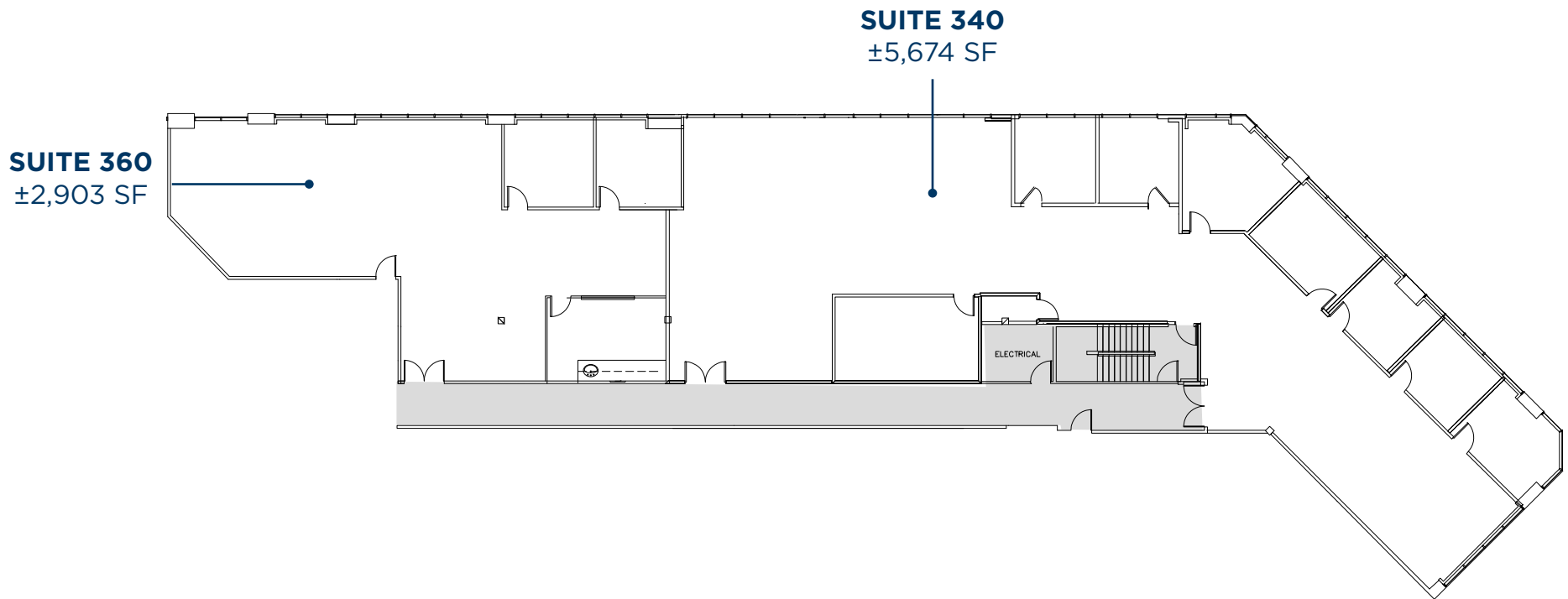
SUITE 110
±3,334 SF

FREMONT OFFICE CENTER

39300 CIVIC CENTER DRIVE SUITES 340-360

±8,577 TOTAL SF

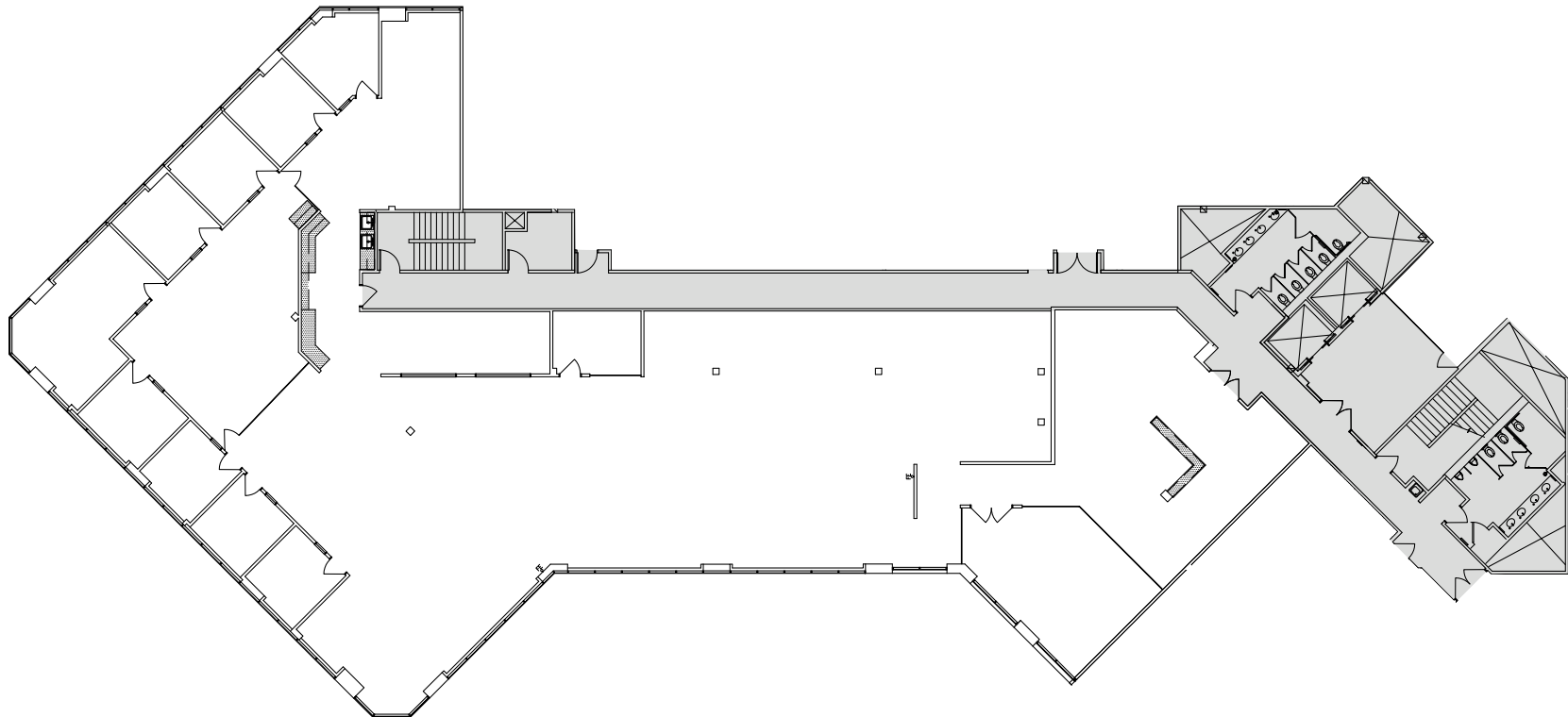
LEASES THROUGH FEBRUARY 28, 2027



FREMONT OFFICE CENTER

**2201 WALNUT AVENUE
SUITE 310**

±11,081 SF





CONTACTS

SCOTT DEVER
Managing Director

+1 408 615 3457
scott.dever@cushwake.com
LIC. 01890552

WALT STEPHENSON
Executive Director

+1 408 615 3458
walt.stephenson@cushwake.com
LIC. 01793438



©2023 Cushman & Wakefield. All rights reserved. The information contained in this communication is strictly confidential. This information has been obtained from sources believed to be reliable but has not been verified. NO WARRANTY OR REPRESENTATION, EXPRESS OR IMPLIED, IS MADE AS TO THE CONDITION OF THE PROPERTY (OR PROPERTIES) REFERENCED HEREIN OR AS TO THE ACCURACY OR COMPLETENESS OF THE INFORMATION CONTAINED HEREIN, AND SAME IS SUBMITTED SUBJECT TO ERRORS, OMISSIONS, CHANGE OF PRICE, RENTAL OR OTHER CONDITIONS, WITHDRAWAL WITHOUT NOTICE, AND TO ANY SPECIAL LISTING CONDITIONS IMPOSED BY THE PROPERTY OWNER(S). ANY PROJECTIONS, OPINIONS OR ESTIMATES ARE SUBJECT TO UNCERTAINTY AND DO NOT SIGNIFY CURRENT OR FUTURE PROPERTY PERFORMANCE.