

# The Atrium

1900 S. Norfolk St | San Mateo, CA

[www.atriumsm.com](http://www.atriumsm.com)



**Pat Yaeger**  
Senior Director  
+1 650 401 2133  
[pat.yaeger@cushwake.com](mailto:pat.yaeger@cushwake.com)  
LIC #01452294

**Gary Boitano**  
Managing Director  
+1 650 401 2122  
[gary.boitano@cushwake.com](mailto:gary.boitano@cushwake.com)  
LIC #01902693

1350 Bayshore Highway  
Suite 900  
Burlingame, CA 94010

[cushmanwakefield.com](http://cushmanwakefield.com)



## PROPERTY OVERVIEW

The Atrium is a 164,013 sF, aluminum and glass clad Class A office building designed around a central open-air 'atrium' with reflecting pool and casual meeting areas. It boasts being the headquarters to a number of successful technology companies and remains the first choice for today's young, cutting-edge businesses. Its convenient location at the junction of Highways 101 and 92 in central San Mateo County provides easy accessibility from all vicinities of the Bay Area, be it the north, south, east or west.

## FEATURES

- Excellent freeway access to highways 101 and 92
- Abundant free parking
- Efficient floor plates to accommodate both small and large tenants
- On-site building conference room facilities
- On-site cafe
- Owned & managed by Seagate Properties



**Pat Yaeger**  
Senior Director  
+1 650 401 2133  
pat.yaeger@cushwake.com  
LIC #01452294

**Gary Boitano**  
Managing Director  
+1 650 401 2122  
gary.boitano@cushwake.com  
LIC #01902693

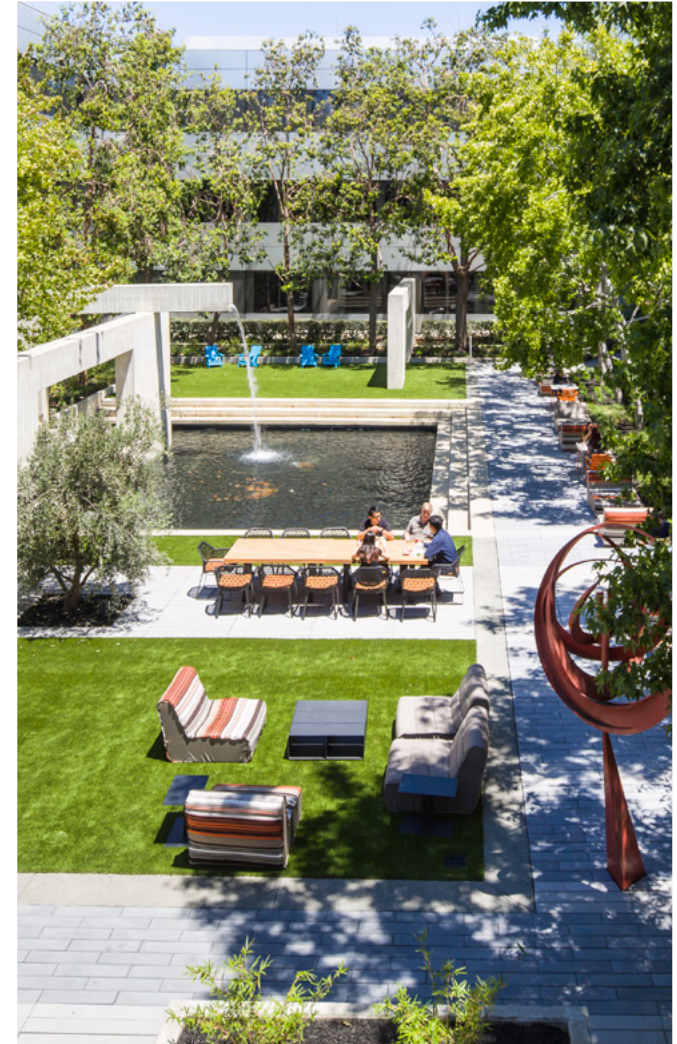
1350 Bayshore Hwy., Suite 900  
Burlingame, CA  
main +1 650 347 3700  
fax +1 650 347 4307  
[cushmanwakefield.com](http://cushmanwakefield.com)



## Floor Plans

AVAIL.	SIZE	NOTES
<a href="#"><u>Suite 126</u></a>	±697 SF	Kitchen, open area.
<a href="#"><u>Suite 150</u></a>	±26,649 SF	High end finishes. Double glass door entry off of the main lobby, 4 conference rooms, 39 private offices, 2 breakrooms, multiple storage rooms, server room and open areas.
<a href="#"><u>Suite 210</u></a>	±3,098 SF	4 private offices, 1 conference room, storage room, kitchenette, open office.
<a href="#"><u>Suite 214</u></a>	±1,168 SF	2 private offices, 1 conference room, open office, kitchenette.
<a href="#"><u>Suite 215</u></a>	±850 SF	2 private offices, conference room, reception area. Available 11/15/24
<a href="#"><u>Suite 222</u></a>	±5,244 SF	Plug & play: 4 conference rooms, open kitchen, server room, open area.
<a href="#"><u>Suite 230</u></a>	±1,161 SF	1 private office, open office area, plug and play.
<a href="#"><u>Suite 235</u></a>	±4,406 SF	Conference room, 3 private offices, large breakroom, storage, server room, and open area.
<a href="#"><u>Suite 240</u></a>	±2,155 SF	3 private offices, kitchen, open office.
<a href="#"><u>Suite 270</u></a>	±2,665 SF	5 private offices, 2 open offices, 1 conference room, kitchen, storage.
<a href="#"><u>Suite 315</u></a>	±5,782 SF	Hypothetical Layout: Conference room, 3 private offices, kitchen, open area.
<a href="#"><u>Suite 318</u></a>	±3,668 SF	Hypothetical Layout: Conference room, 2 private offices, kitchen, open area.
<a href="#"><u>Suite 355</u></a>	±4,217 SF	2 conference rooms, private office, kitchen, reception & open office area.

[CLICK ON SUITE # TO VIEW FLOOR PLANS](#)



**Pat Yaeger**  
Senior Director  
+1 650 401 2133  
[pat.yaeger@cushwake.com](mailto:pat.yaeger@cushwake.com)  
LIC #01452294

**Gary Boitano**  
Managing Director  
+1 650 401 2122  
[gary.boitano@cushwake.com](mailto:gary.boitano@cushwake.com)  
LIC #01902693

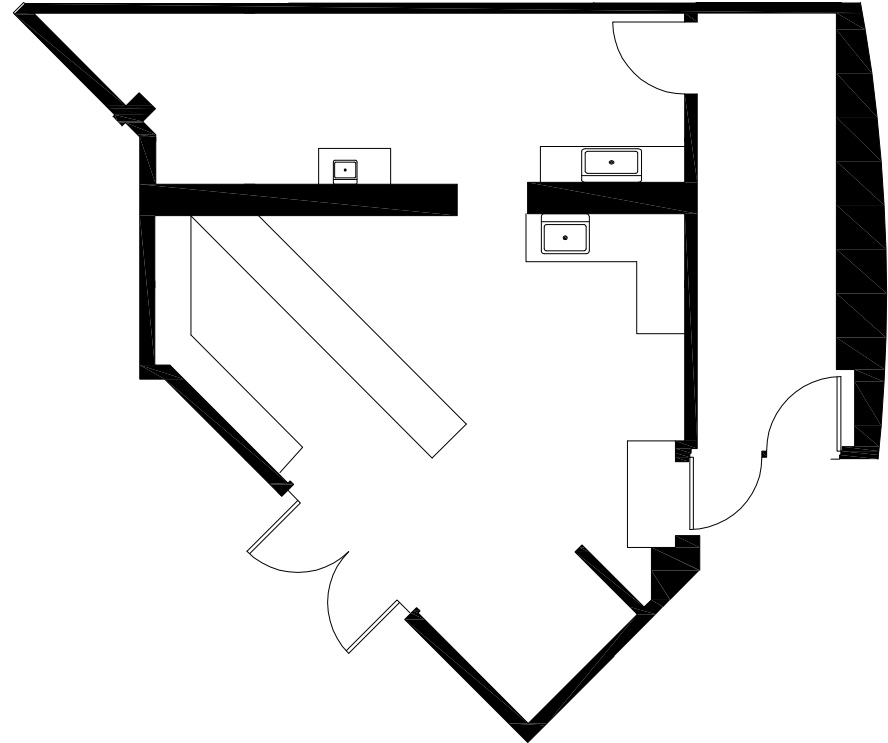
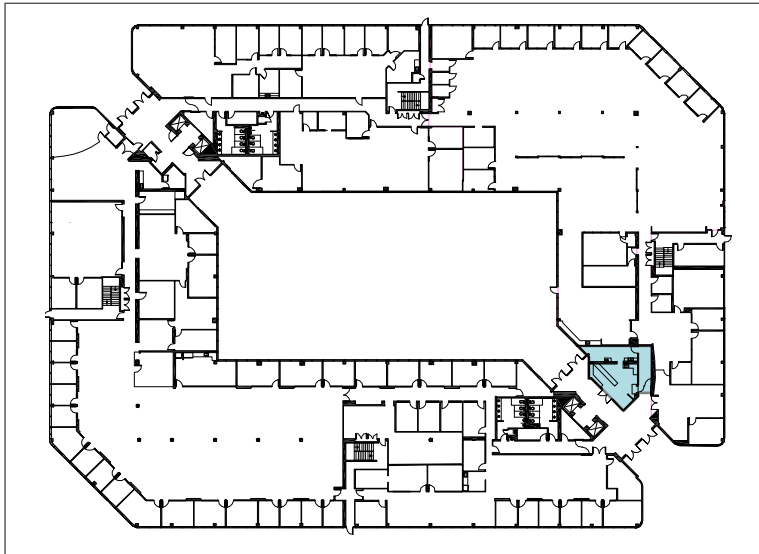
1350 Bayshore Hwy., Suite 900  
Burlingame, CA  
main +1 650 347 3700  
fax +1 650 347 4307  
[cushmanwakefield.com](http://cushmanwakefield.com)

**SEAGATE**  
A REAL PROPERTY INVESTMENT  
& OPERATING COMPANY

FLOOR PLANS

Suite 126 ±697 SF

Kitchen, open area.



[\[RETURN TO AVAILABILITIES\]](#)

**Pat Yaeger**  
Senior Director  
+1 650 401 2133  
[pat.yaeger@cushwake.com](mailto:pat.yaeger@cushwake.com)  
LIC #01452294

**Gary Boitano**  
Managing Director  
+1 650 401 2122  
[gary.boitano@cushwake.com](mailto:gary.boitano@cushwake.com)  
LIC #01902693

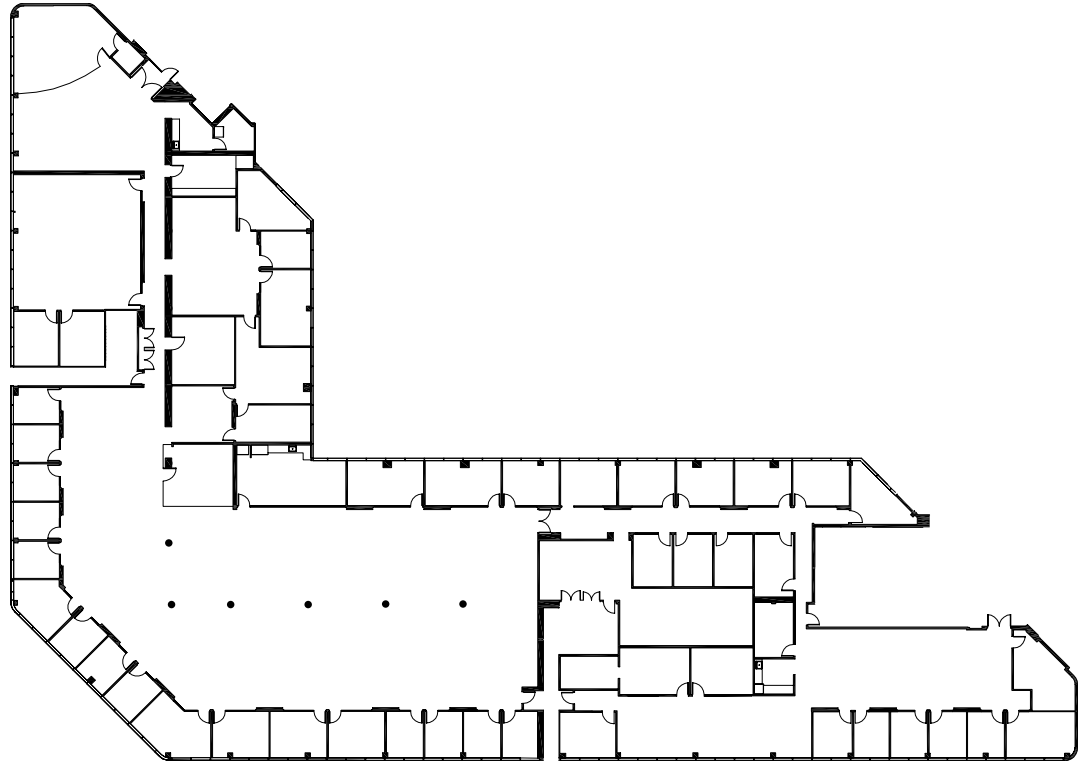
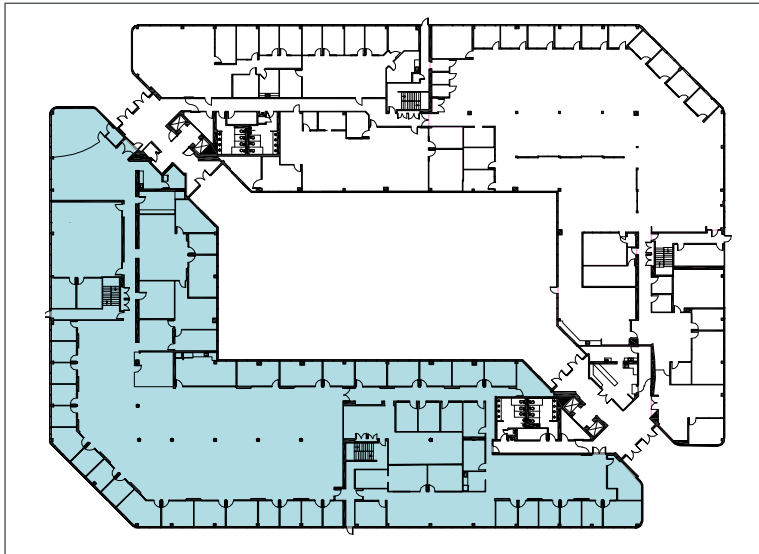
1350 Bayshore Hwy., Suite 900  
Burlingame, CA  
main +1 650 347 3700  
fax +1 650 347 4307  
[cushmanwakefield.com](http://cushmanwakefield.com)



## FLOOR PLANS

Suite 150 ±26,649 sf

High end finishes. Double glass door entry off of the main lobby, 4 conference rooms, 39 private offices, 2 breakrooms, multiple storage rooms, server room and open areas.



[\[RETURN TO AVAILABILITIES\]](#)

**Pat Yaeger**  
Senior Director  
+1 650 401 2133  
[pat.yaeger@cushwake.com](mailto:pat.yaeger@cushwake.com)  
LIC #01452294

**Gary Boitano**  
Managing Director  
+1 650 401 2122  
[gary.boitano@cushwake.com](mailto:gary.boitano@cushwake.com)  
LIC #01902693

1350 Bayshore Hwy., Suite 900  
Burlingame, CA  
main +1 650 347 3700  
fax +1 650 347 4307  
[cushmanwakefield.com](http://cushmanwakefield.com)

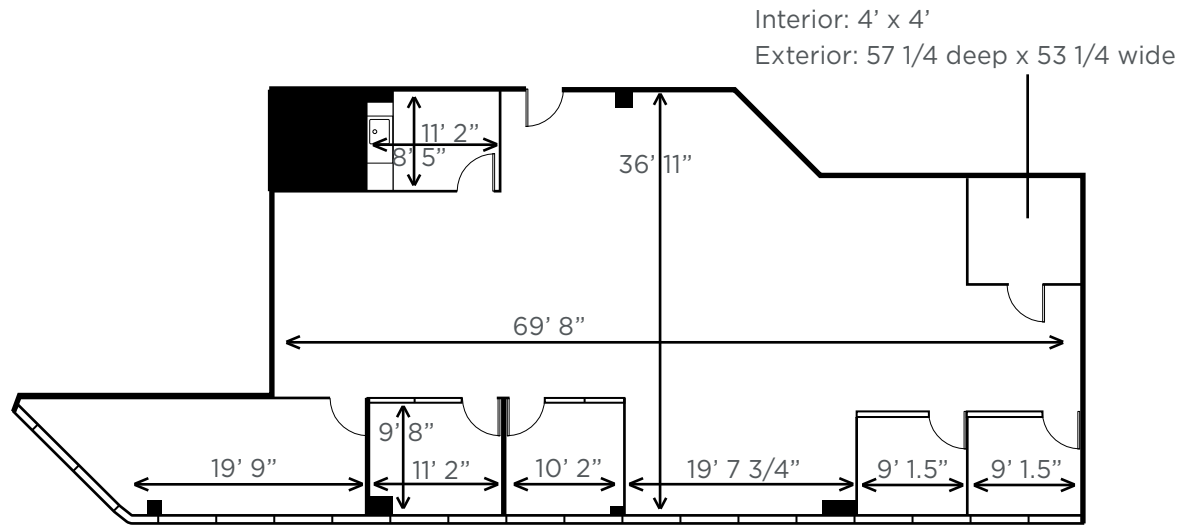
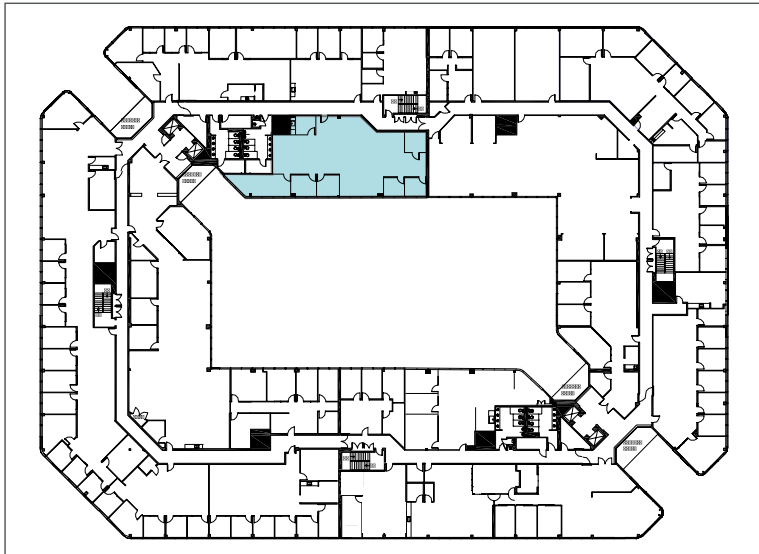
**SEAGATE**  
A REAL PROPERTY INVESTMENT  
& OPERATING COMPANY



FLOOR PLANS

Suite 210 ±3,098 sf

4 private offices, 1 conference room, storage room, kitchenette, open office.



[\[RETURN TO AVAILABILITIES\]](#)

**Pat Yaeger**  
Senior Director  
+1 650 401 2133  
pat.yaeger@cushwake.com  
LIC #01452294

**Gary Boitano**  
Managing Director  
+1 650 401 2122  
gary.boitano@cushwake.com  
LIC #01902693

1350 Bayshore Hwy., Suite 900  
Burlingame, CA  
main +1 650 347 3700  
fax +1 650 347 4307  
cushmanwakefield.com





**CUSHMAN &  
WAKEFIELD**

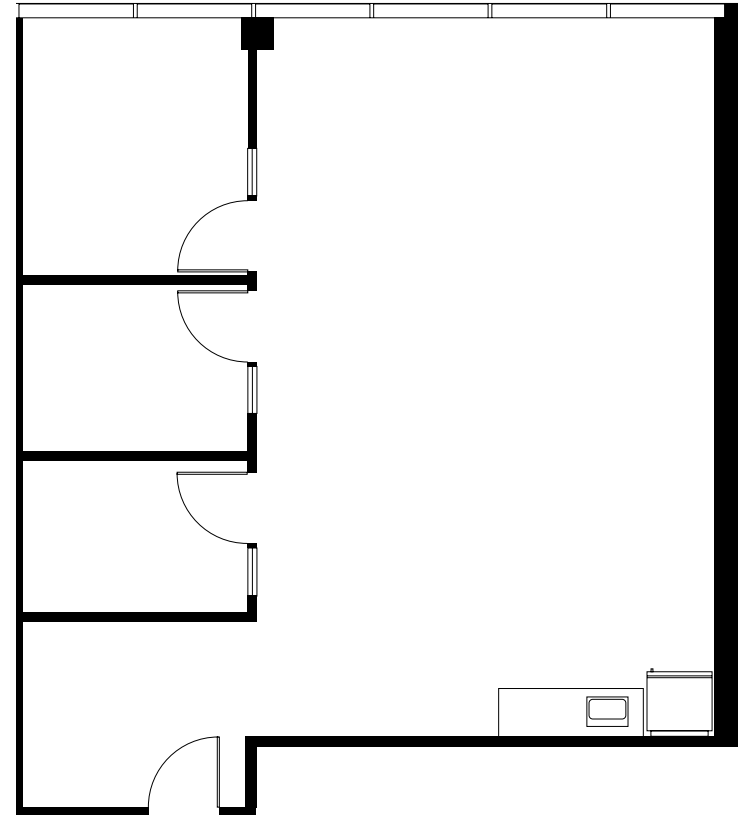
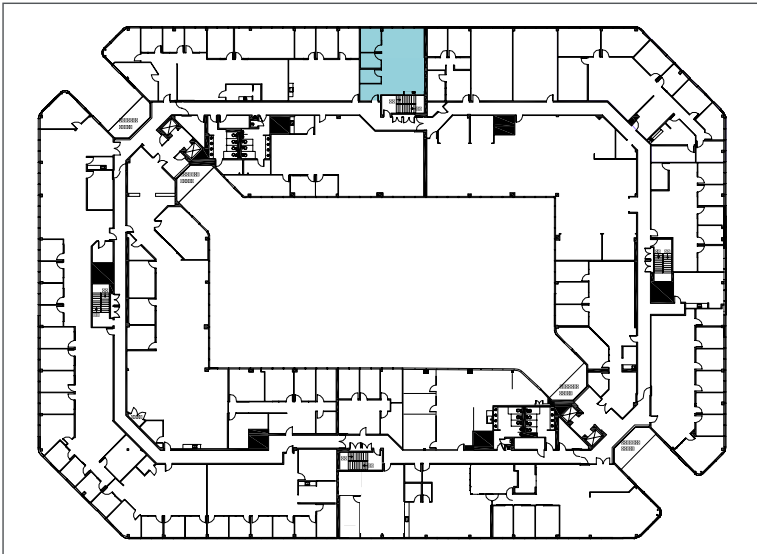
# The Atrium

1900 S. Norfolk St, San Mateo, California

## FLOOR PLANS

Suite 214 ±1,168 SF

2 private offices, 1 conference room, open office, kitchenette.



[\[RETURN TO AVAILABILITIES\]](#)

**Pat Yaeger**  
Senior Director  
+1 650 401 2133  
pat.yaeger@cushwake.com  
LIC #01452294

**Gary Boitano**  
Managing Director  
+1 650 401 2122  
gary.boitano@cushwake.com  
LIC #01902693

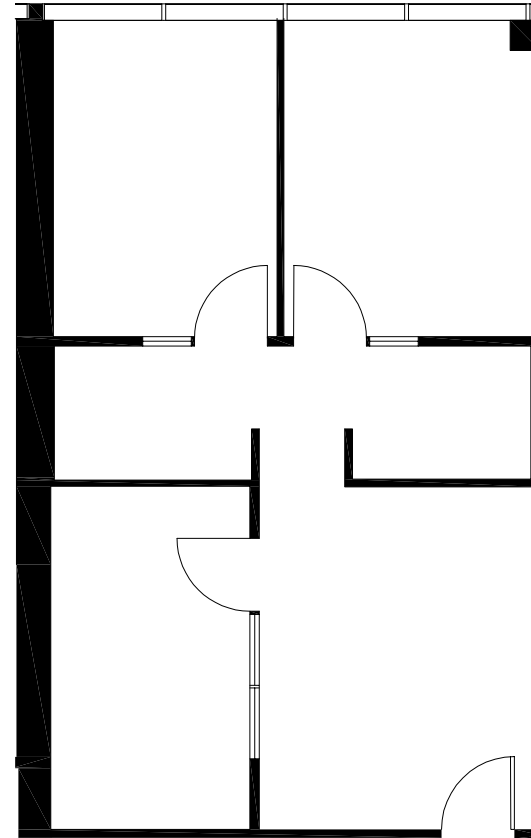
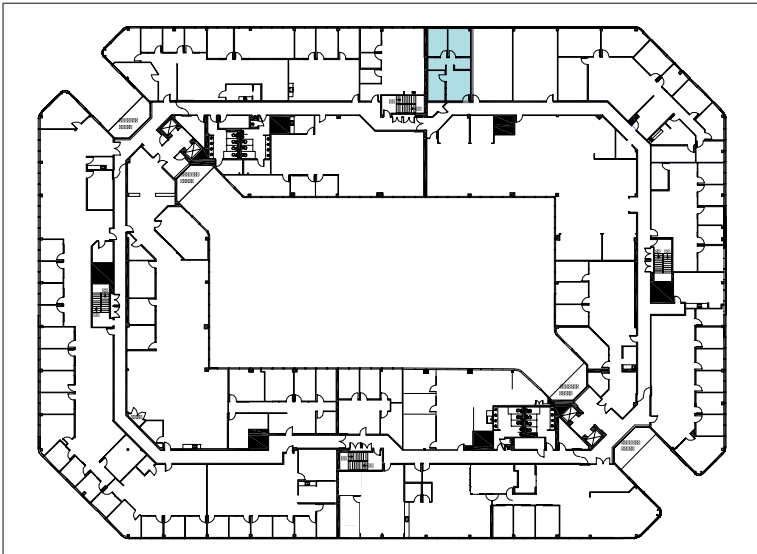
1350 Bayshore Hwy., Suite 900  
Burlingame, CA  
main +1 650 347 3700  
fax +1 650 347 4307  
cushmanwakefield.com



FLOOR PLANS

Suite 215 ±850 SF

2 private offices, 1 conference room, reception area.  
Available 11/15/24



[\[RETURN TO AVAILABILITIES\]](#)

**Pat Yaeger**  
Senior Director  
+1 650 401 2133  
[pat.yaeger@cushwake.com](mailto:pat.yaeger@cushwake.com)  
LIC #01452294

**Gary Boitano**  
Managing Director  
+1 650 401 2122  
[gary.boitano@cushwake.com](mailto:gary.boitano@cushwake.com)  
LIC #01902693

1350 Bayshore Hwy., Suite 900  
Burlingame, CA  
main +1 650 347 3700  
fax +1 650 347 4307  
[cushmanwakefield.com](http://cushmanwakefield.com)

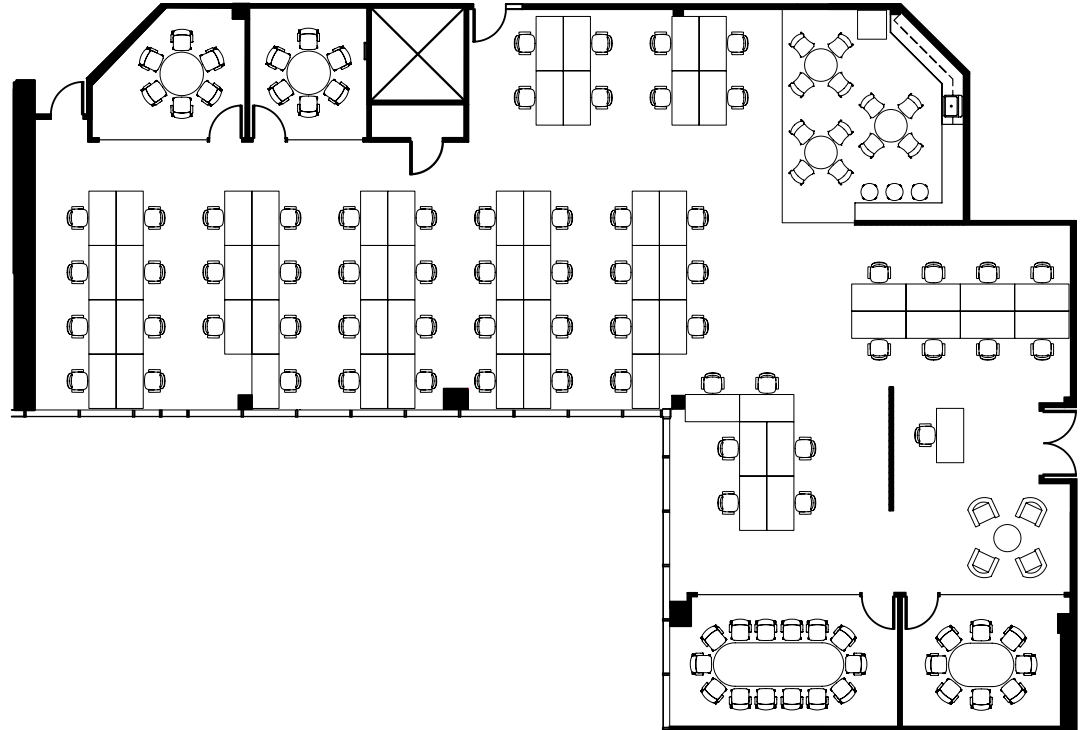
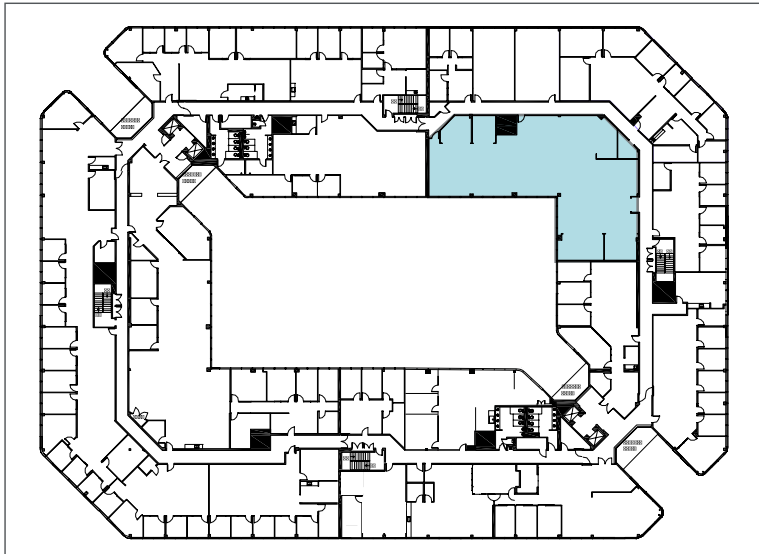
**SEAGATE**  
A REAL PROPERTY INVESTMENT  
& OPERATING COMPANY



FLOOR PLANS

Suite 222 ±5,244 SF

Plug & play: 4 conference rooms, open kitchen, server room open area.



[\[RETURN TO AVAILABILITIES\]](#)

**Pat Yaeger**  
Senior Director  
+1 650 401 2133  
[pat.yaeger@cushwake.com](mailto:pat.yaeger@cushwake.com)  
LIC #01452294

**Gary Boitano**  
Managing Director  
+1 650 401 2122  
[gary.boitano@cushwake.com](mailto:gary.boitano@cushwake.com)  
LIC #01902693

1350 Bayshore Hwy., Suite 900  
Burlingame, CA  
main +1 650 347 3700  
fax +1 650 347 4307  
[cushmanwakefield.com](http://cushmanwakefield.com)





**CUSHMAN &  
WAKEFIELD**

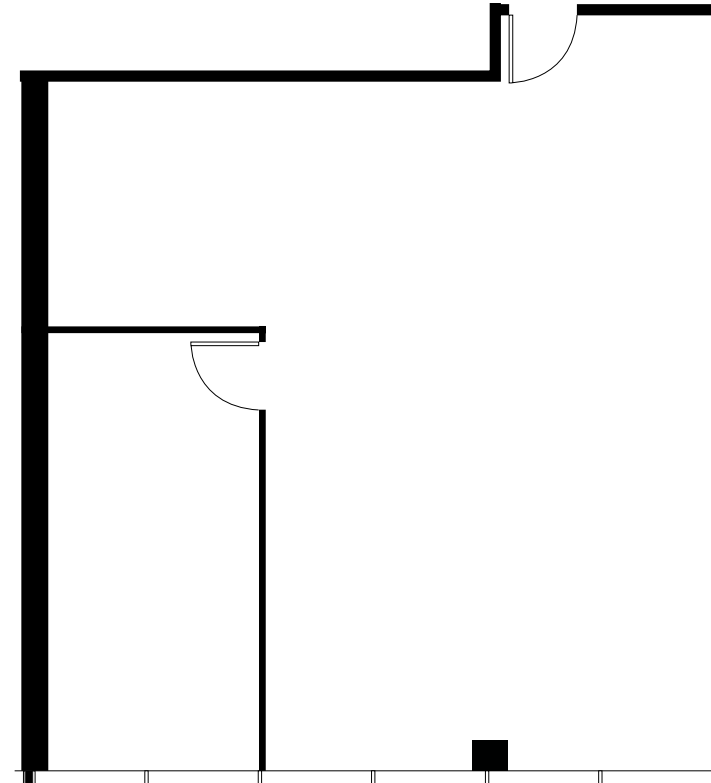
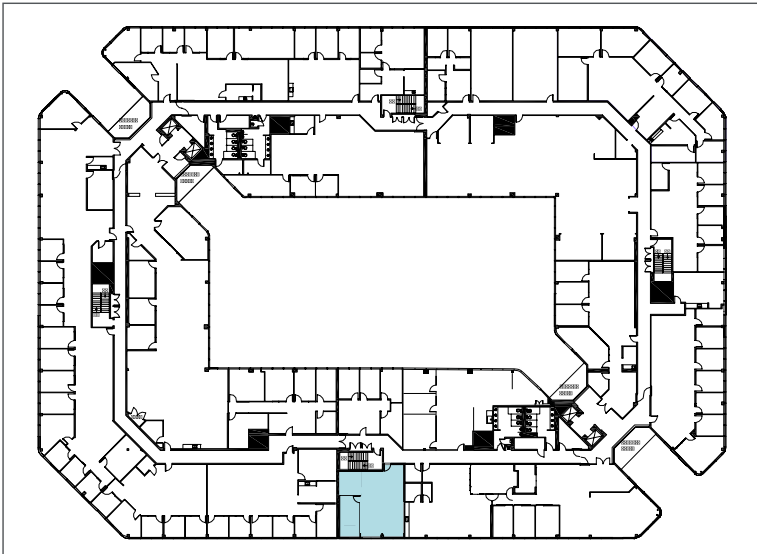
# The Atrium

1900 S. Norfolk St, San Mateo, California

## FLOOR PLANS

Suite 230 ±1,161 SF

1 private office, open office area, plug and play.



[\[RETURN TO AVAILABILITIES\]](#)

**Pat Yaeger**  
Senior Director  
+1 650 401 2133  
[pat.yaeger@cushwake.com](mailto:pat.yaeger@cushwake.com)  
LIC #01452294

**Gary Boitano**  
Managing Director  
+1 650 401 2122  
[gary.boitano@cushwake.com](mailto:gary.boitano@cushwake.com)  
LIC #01902693

1350 Bayshore Hwy., Suite 900  
Burlingame, CA  
main +1 650 347 3700  
fax +1 650 347 4307  
[cushmanwakefield.com](http://cushmanwakefield.com)





**CUSHMAN &  
WAKEFIELD**

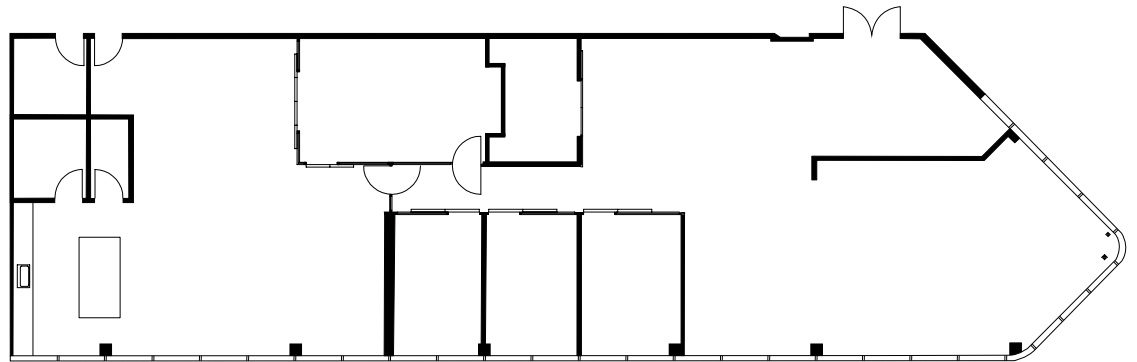
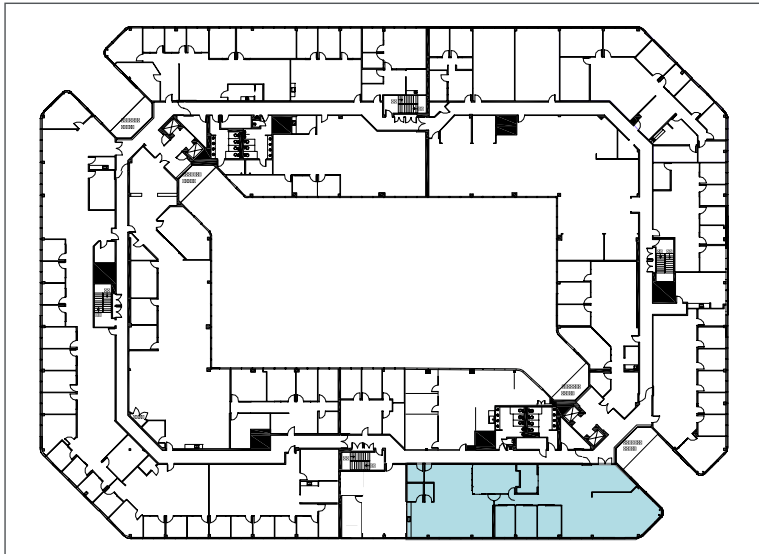
# The Atrium

1900 S. Norfolk St, San Mateo, California

## FLOOR PLANS

Suite 235 ±4,406 SF

Conference room, 3 private offices, large breakroom, storage, server room, and open area.



[\[RETURN TO AVAILABILITIES\]](#)

**Pat Yaeger**  
Senior Director  
+1 650 401 2133  
pat.yaeger@cushwake.com  
LIC #01452294

**Gary Boitano**  
Managing Director  
+1 650 401 2122  
gary.boitano@cushwake.com  
LIC #01902693

1350 Bayshore Hwy., Suite 900  
Burlingame, CA  
main +1 650 347 3700  
fax +1 650 347 4307  
[cushmanwakefield.com](http://cushmanwakefield.com)

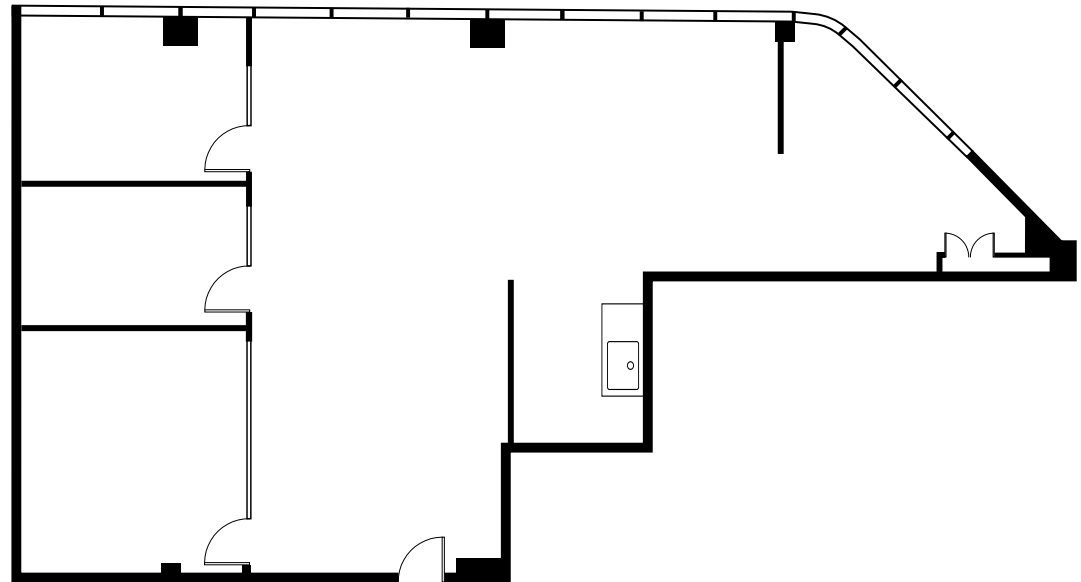
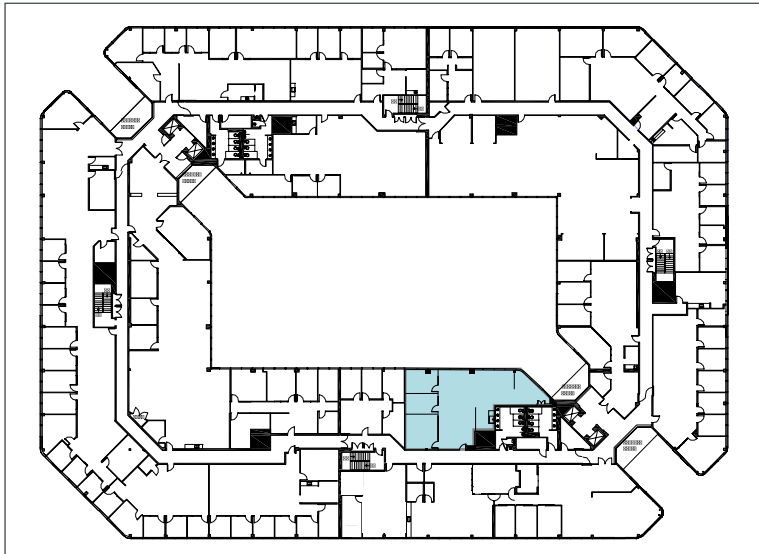




FLOOR PLANS

Suite 240 ±2,155 SF

3 private offices, kitchen, open office.



[\[RETURN TO AVAILABILITIES\]](#)

**Pat Yaeger**  
Senior Director  
+1 650 401 2133  
[pat.yaeger@cushwake.com](mailto:pat.yaeger@cushwake.com)  
LIC #01452294

**Gary Boitano**  
Managing Director  
+1 650 401 2122  
[gary.boitano@cushwake.com](mailto:gary.boitano@cushwake.com)  
LIC #01902693

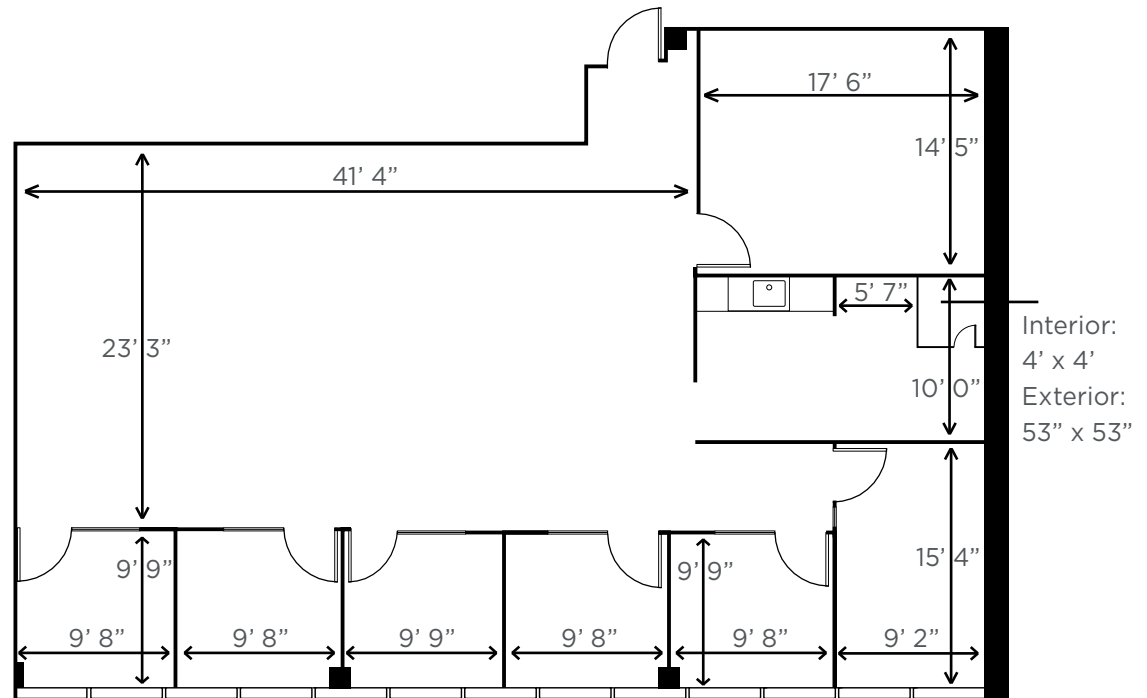
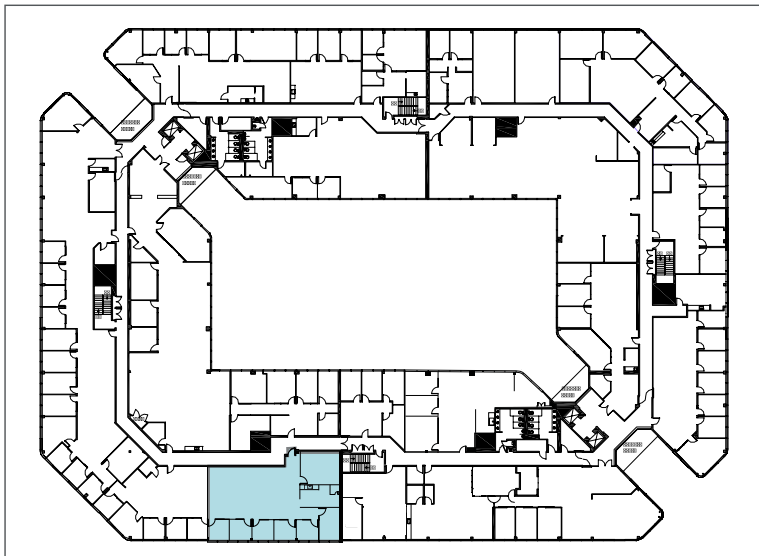
1350 Bayshore Hwy., Suite 900  
Burlingame, CA  
main +1 650 347 3700  
fax +1 650 347 4307  
[cushmanwakefield.com](http://cushmanwakefield.com)

**SEAGATE**  
A REAL PROPERTY INVESTMENT  
& OPERATING COMPANY

FLOOR PLANS

Suite 270 ±2,665 SF

5 private offices, 2 open offices, 1 conference room, kitchen, storage.



[RETURN TO AVAILABILITIES]

**Pat Yaeger**  
Senior Director  
+1 650 401 2133  
pat.yaeger@cushwake.com  
LIC #01452294

**Gary Boitano**  
Managing Director  
+1 650 401 2122  
gary.boitano@cushwake.com  
LIC #01902693

1350 Bayshore Hwy., Suite 900  
Burlingame, CA  
main +1 650 347 3700  
fax +1 650 347 4307  
cushmanwakefield.com





**CUSHMAN & WAKEFIELD**

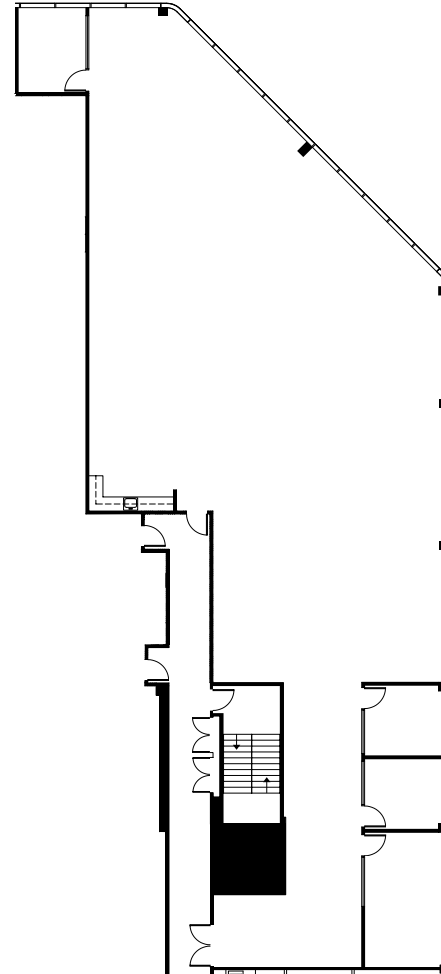
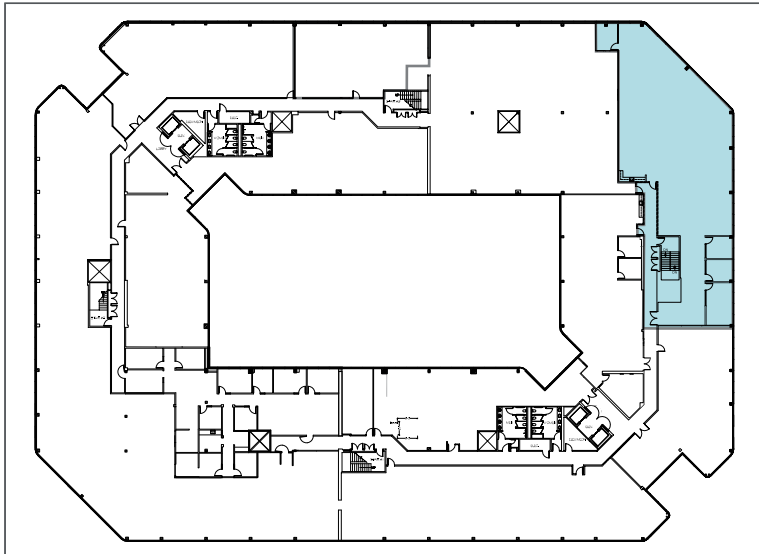
# The Atrium

1900 S. Norfolk St, San Mateo, California

## FLOOR PLANS

Suite 315 ±5,782 SF

Hypothetical Layout: Conference room, 3 private offices kitchen, open area.



[\[RETURN TO AVAILABILITIES\]](#)

**Pat Yaeger**  
Senior Director  
+1 650 401 2133  
pat.yaeger@cushwake.com  
LIC #01452294

**Gary Boitano**  
Managing Director  
+1 650 401 2122  
gary.boitano@cushwake.com  
LIC #01902693

1350 Bayshore Hwy., Suite 900  
Burlingame, CA  
main +1 650 347 3700  
fax +1 650 347 4307  
cushmanwakefield.com







**CUSHMAN &  
WAKEFIELD**

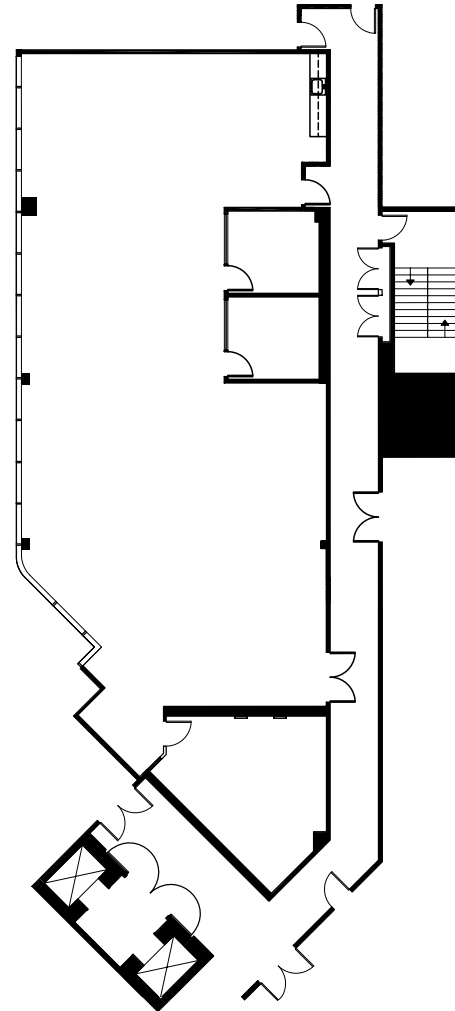
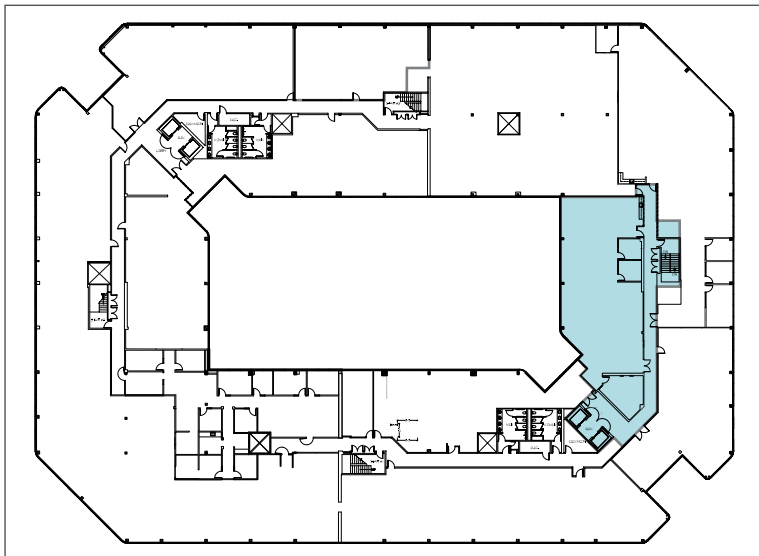
# The Atrium

1900 S. Norfolk St, San Mateo, California

## FLOOR PLANS

Suite 318 ±3,668 SF

Hypothetical Layout: Conference room, 2 private offices  
kitchen, open area.



[\[RETURN TO AVAILABILITIES\]](#)

**Pat Yaeger**  
Senior Director  
+1 650 401 2133  
[pat.yaeger@cushwake.com](mailto:pat.yaeger@cushwake.com)  
LIC #01452294

**Gary Boitano**  
Managing Director  
+1 650 401 2122  
[gary.boitano@cushwake.com](mailto:gary.boitano@cushwake.com)  
LIC #01902693

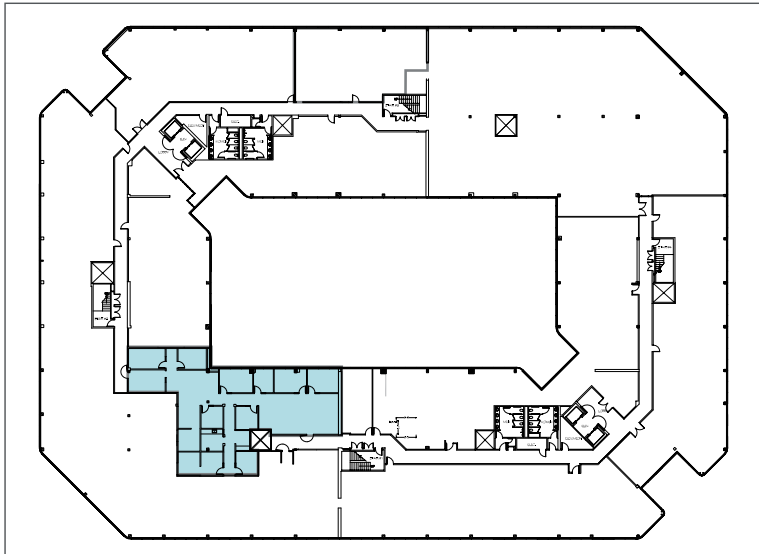
1350 Bayshore Hwy., Suite 900  
Burlingame, CA  
main +1 650 347 3700  
fax +1 650 347 4307  
[cushmanwakefield.com](http://cushmanwakefield.com)



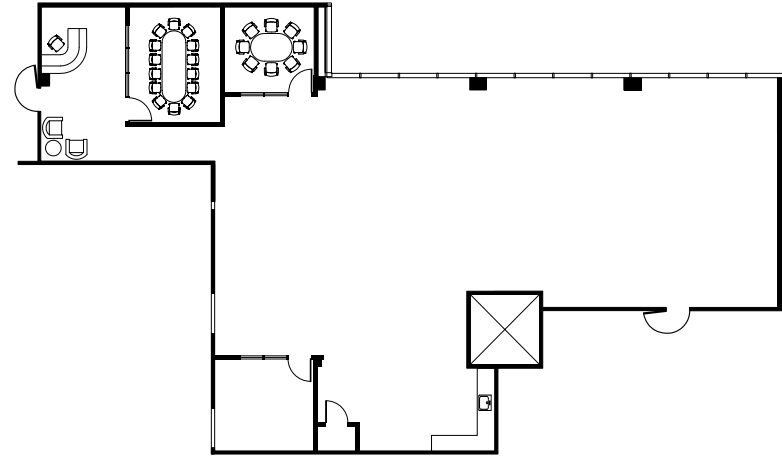
FLOOR PLANS

Suite 355 ±4,217 SF

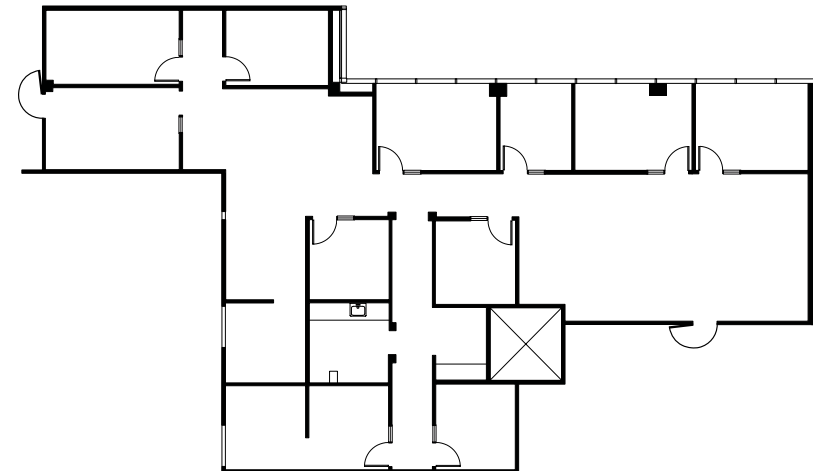
2 conference rooms, private office, kitchen, reception & open office area.



HYPOTHETICAL FLOORPLAN



AS BUILT FLOORPLAN



**Pat Yaeger**  
Senior Director  
+1 650 401 2133  
pat.yaeger@cushwake.com  
LIC #01452294

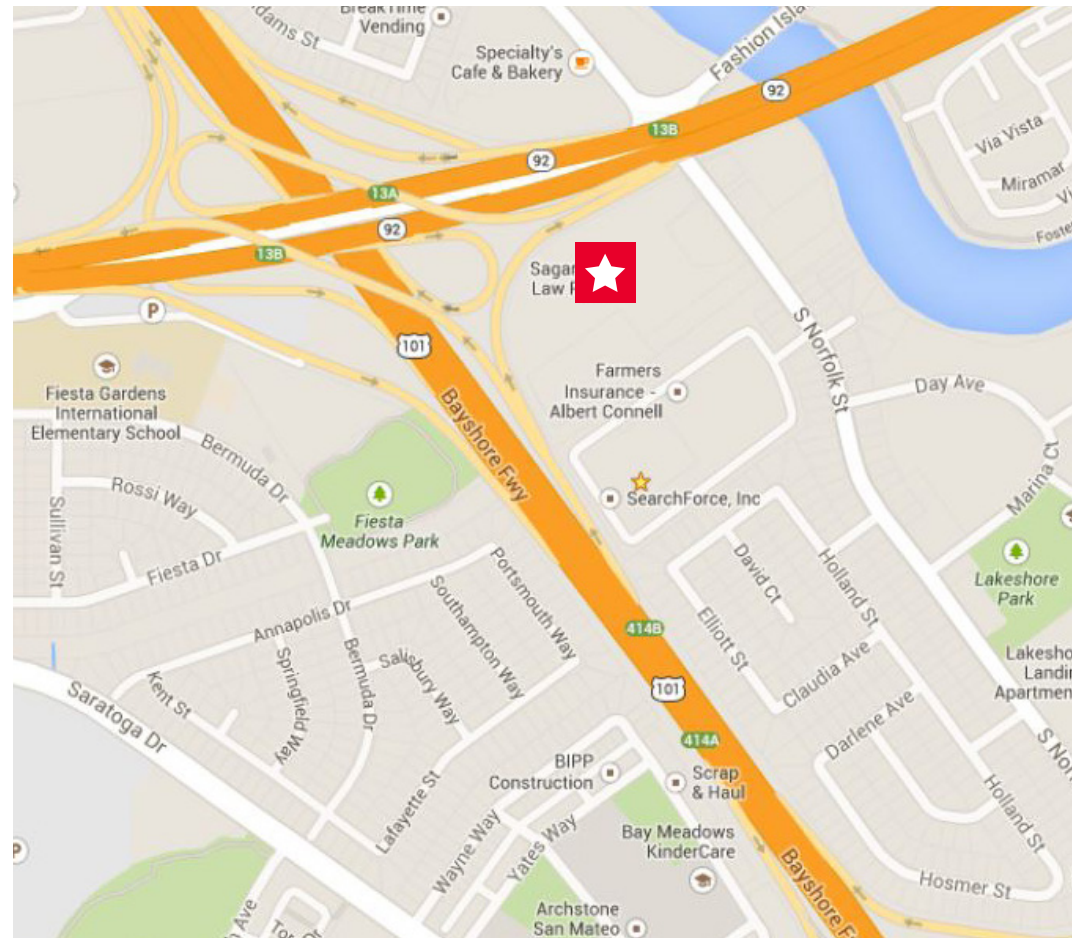
**Gary Boitano**  
Managing Director  
+1 650 401 2122  
gary.boitano@cushwake.com  
LIC #01902693

1350 Bayshore Hwy., Suite 900  
Burlingame, CA  
main +1 650 347 3700  
fax +1 650 347 4307  
cushmanwakefield.com



## LOCATION

Located right at the Highway 101 and 92 junction, the Atrium provides easy access to commuters from San Francisco, the Peninsula, the South Bay, and the East Bay. Restaurants, retailers, hotels, and much more are also readily available. For those commuters who use Caltrain, the Atrium is serviced by a shuttle, which connects the project with Hillsdale Caltrain station. Dedicated on/off ramps from Highway 101 allow quick and easy access to and from the San Francisco Peninsula's main freeway artery.



**Pat Yaeger**  
Senior Director  
+1 650 401 2133  
pat.yaeger@cushwake.com  
LIC #01452294

**Gary Boitano**  
Managing Director  
+1 650 401 2122  
gary.boitano@cushwake.com  
LIC #01902693

1350 Bayshore Hwy., Suite 900  
Burlingame, CA  
main +1 650 347 3700  
fax +1 650 347 4307  
[cushmanwakefield.com](http://cushmanwakefield.com)





## Amenities

The Atrium is located in close proximity to the following amenities:

RESTAURANTS	
Armadillo Willy's	Specialty's Cafe
Tapenade Mediterranean Grill	BJ's Restaurant & Brewery
Baja Fresh	Mimi's Cafe
Carl's Jr.	Starbucks
Harry's Hofbrau	Fish Market
Red Robin	Jamba Juice
Noah's Bagels	Round Table Pizza

HOTELS	
Crowne Plaza	Courtyard by Marriott
Hilton Garden Inn	Residence Inn
Mariott	

RETAIL	
Home Depot	Bridgepointe Shopping Center
Michael's Arts & Crafts	Rite Aid
Office Depot	Target

MISCELLANEOUS	
Post Office	Trader Joe's

BANKS	
Wells Fargo Bank	Bank of America

FITNESS	
YMCA San Mateo (Adjacent)	24 Hour Fitness
Crunch Gym	Peninsula Jewish Community Center



### CALTRAIN CONNECTOR - HILLSDALE

	<i>Caltrain Arrives Hillsdale Station</i>	<i>Shuttle Departs Hillsdale</i>	<i>Arrives at The Atrium</i>
Northbound	Southbound		
7:02 am	7:03 am	7:08 am	7:27 am
7:28 am	7:42 am	7:47 am	8:06 am
8:02 am	8:03 am	8:16 am	8:35 am
8:28 am	8:42 am	8:47 am	9:06 am
9:02 am	9:03 am	9:16 am	9:35 am

<i>Shuttle Departs The Atrium</i>	<i>Arrives at Hillsdale Station</i>	<i>Caltrain Departs Hillsdale Station</i>	
		Northbound	Southbound
4:01 pm	4:23 pm	4:42 pm	4:35 pm
4:38 pm	5:00 pm	5:08 pm	5:13 pm
5:10 pm	5:32 pm	5:44 pm	5:40 pm
5:42 pm	6:03 pm	6:08 pm	6:13 pm
6:13 pm	6:34 pm	6:42 pm	6:40 pm

\*Schedules subject to change, please visit [www.caltrain.com](http://www.caltrain.com) for more information

**Pat Yaeger**  
Senior Director  
+1 650 401 2133  
[pat.yaeger@cushwake.com](mailto:pat.yaeger@cushwake.com)  
LIC #01452294

**Gary Boitano**  
Managing Director  
+1 650 401 2122  
[gary.boitano@cushwake.com](mailto:gary.boitano@cushwake.com)  
LIC #01902693

1350 Bayshore Hwy., Suite 900  
Burlingame, CA  
main +1 650 347 3700  
fax +1 650 347 4307  
[cushmanwakefield.com](http://cushmanwakefield.com)





# The Atrium

1900 S. Norfolk St, San Mateo, California

## Contact Us:

### EXCLUSIVE LEASING AGENTS:

#### Pat Yaeger

+1 650 401 2121

pat.yaeger@cushwake.com

#### Gary Boitano

+1 650 401 2122

gary.boitano@cushwake.com

#### Cushman & Wakefield

1350 Bayshore Highway  
Suite 900  
Burlingame, CA 94010  
cushmanwakefield.com



**Pat Yaeger**  
Senior Director  
+1 650 401 2133  
pat.yaeger@cushwake.com  
LIC #01452294

**Gary Boitano**  
Managing Director  
+1 650 401 2122  
gary.boitano@cushwake.com  
LIC #01902693

1350 Bayshore Hwy., Suite 900  
Burlingame, CA  
main +1 650 347 3700  
fax +1 650 347 4307  
cushmanwakefield.com

