

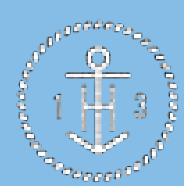
SUBLEASE AVAILABLE AT THE HARBORS



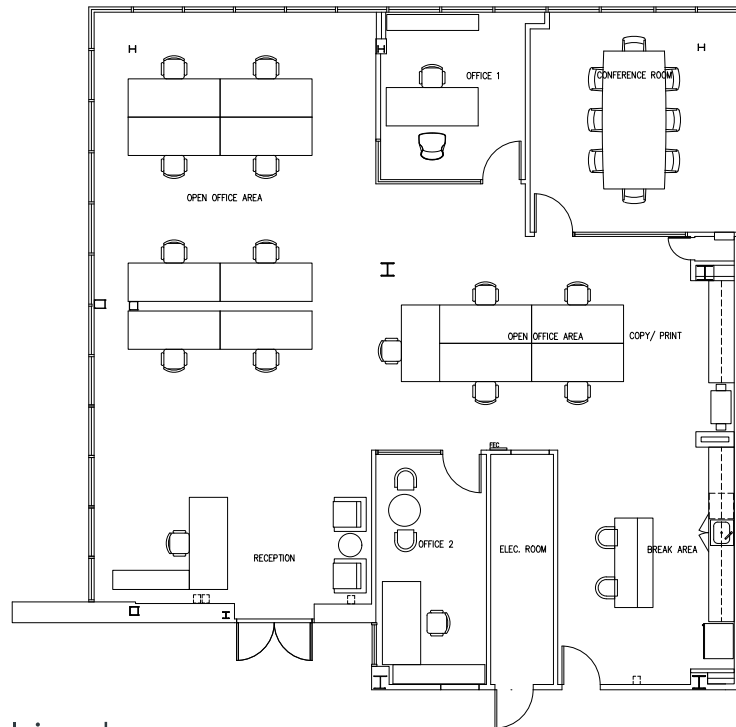
1 & 3 HARBOR DRIVE

Build-to-suit and move-in-ready suites to serve high-profile clients.

- Private decks and direct access suites on the ground floors of both buildings
- Accessible by bus, car, bike, the Sausalito Ferry, and abundant, free on-site parking
- On-site property management, EV charging, common conference room, courtyard, free Wi-Fi, wellness room, and showers



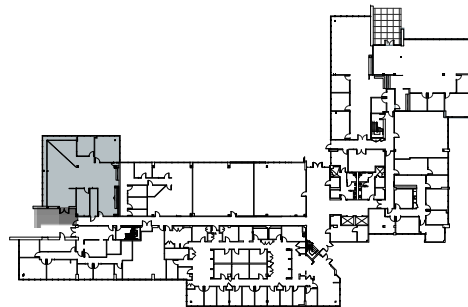
SUITE 3 - 102 | ± 3,227 SF



Highlights

\$4.50/SF FULL SERVICE

- Move-in ready
- Term through 9/30/27
- Newly built-out space
- High-ceilings and updated finishes
- Direct access



WHITNEY STROTZ

EXECUTIVE MANAGING DIRECTOR
+1 415 451 2406
WHITNEY.STROTZ@CUSHWAKE.COM
LIC. #01351397

BRIAN FOSTER

EXECUTIVE DIRECTOR
+1 415 451 2437
BRIAN.FOSTER@CUSHWAKE.COM
LIC. #01393059

DREW SOLTIS

ASSOCIATE
+1 415 451 2415
DREW.SOLTIS@CUSHWAKE.COM
LIC. #02163430

