

**Work  
the way  
you live.**









## ABOUT THE PARK

**THE PARK** is a lifestyle inspired office campus comprised of nine buildings totaling 655,000 SQ FT with a 7-acre park acting as the heart of the project. Located within the park is a professionally fitness center, sports courts, meditation gardens, walking paths, three distinct eateries, gathering spots as well as the great lawn and event stage. **THE PARK** is designed for companies who value innovation, authenticity, well-being and biophilia.

Begin your day with a fresh cup of locally roasted coffee. Boost your heart rate or clear your mind with a spin or yoga class offered in the fitness facility. Take a break from your desk with a stroll through the 7-acre garden, or relax under the shade of an old tree. Foster and strengthen relationships over a cold craft beer and appetizers at Karl Strauss or Park Commons. Watch as your workday reinvents itself through **THE PARK** experience.





# SITE PLAN

- ①  UPTOWN
- ② FIRE PITS, BBQ & BOCCE
- ③ SAND VOLLEYBALL COURT
- ④ BASKETBALL COURT
- ⑤ MULTI-PURPOSE SPORTS FIELD
- ⑥ INDOOR/OUTDOOR FITNESS CENTER
- ⑦ MEDITATION GARDEN & WALKING PATHS
- ⑧ BOARDWALK & OUTDOOR SEATING
- ⑨  KARL STRAUSS BEER CO.
- ⑩  RESTAURANT
- ⑪ EVENT STAGE & GREAT LAWN





**655,000 SF**

Class A creative  
lifestyle campus

**7,000 SF**

Professionally operated  
indoor/outdoor fitness center

**7-Acre**

Amenity Park

**5**

Sport courts  
& fields

**3**

Dining options serving  
craft coffee, lunch and  
dinner/drinks

**1<sup>ST</sup>**

Wired score platinum  
campus in San Diego





# MULTI-PURPOSE SPORTS FIELD









A wide-angle photograph of a modern fitness center. The room features large windows on the right side, providing a view of a green outdoor area with trees. The floor is made of light-colored wood. On the left side, there are several pieces of gym equipment, including a large machine with a yellow handle and a smaller machine. On the right side, there are more pieces of gym equipment, including a rack of weights and a machine with a blue handle. The text "PROFESSIONALLY OPERATED FITNESS CENTER WITH SPA QUALITY SHOWERS & LOCKERS" is overlaid on the top half of the image in white, bold, uppercase letters.

# PROFESSIONALLY OPERATED FITNESS CENTER WITH SPA QUALITY SHOWERS & LOCKERS







# FARM TO TABLE BAR, RESTAURANT AND CAFE









# THE GREAT LAWN AND EVENT STAGE









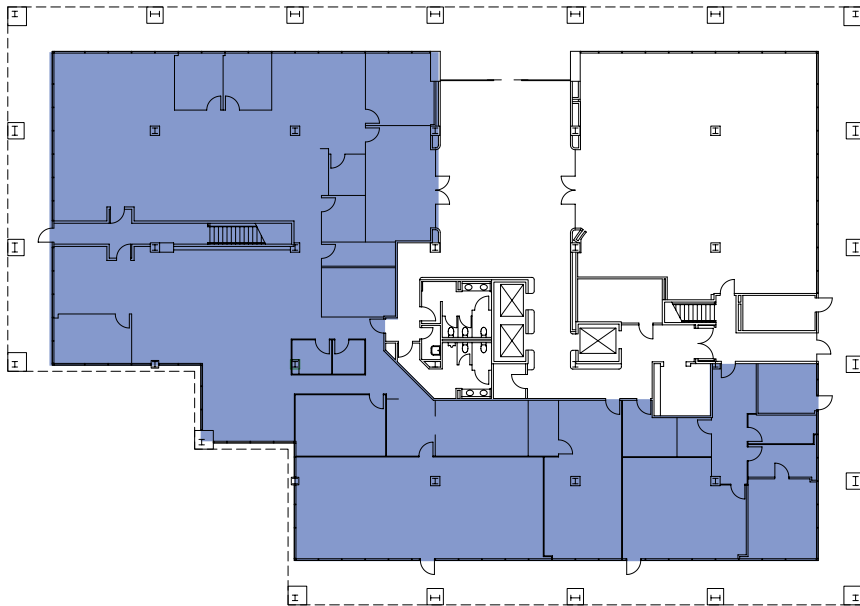
# 1ST FLOOR - 9605 SCRANTON ROAD

## SUITE 150

9,666 SF

(BUILDING CONTIGUOUS TO 59,525 SF)

AVAILABLE FEBRUARY 1, 2020



## SITE PLAN





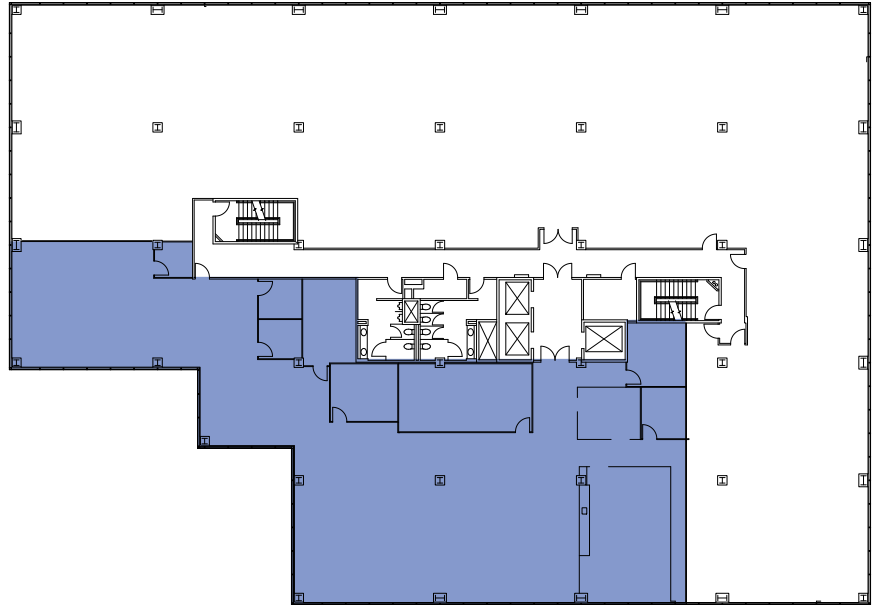
## 2ND FLOOR - 9605 SCRANTON ROAD

### SUITE 250

7,998 SF

(BUILDING CONTIGUOUS TO 59,525 SF)

### SITE PLAN





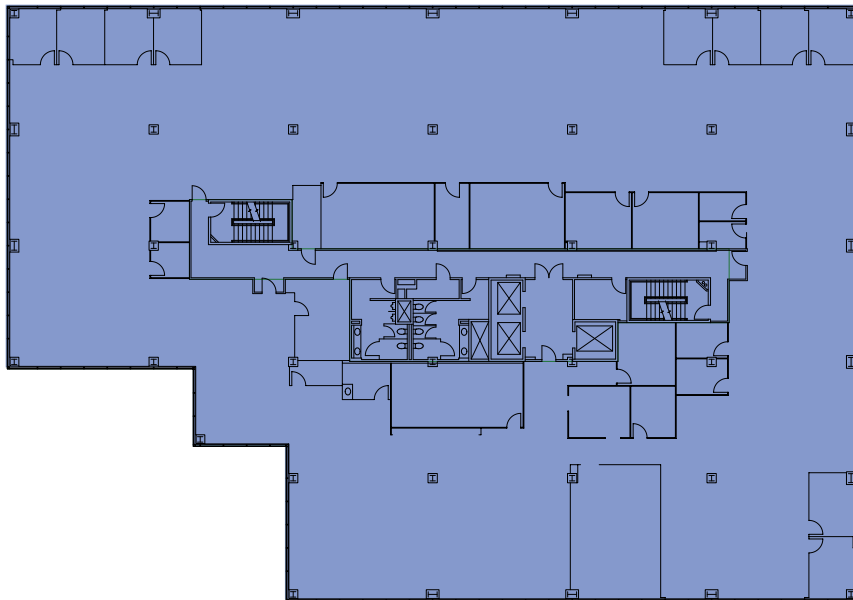
## 3RD FLOOR - 9605 SCRANTON ROAD

### SUITE 300

20,761 SF

(BUILDING CONTIGUOUS TO 59,525 SF)

AVAILABLE FEBRUARY 1, 2020



### SITE PLAN





## 4TH FLOOR - 9605 SCRANTON ROAD

### SUITE 400

8,749 SF

(FLOOR CONTIGUOUS TO 21,100 SF)

(BUILDING CONTIGUOUS TO 59,525 SF)

AVAILABLE FEBRUARY 1, 2020

### SUITE 425

2,416 SF

(FLOOR CONTIGUOUS TO 21,100 SF)

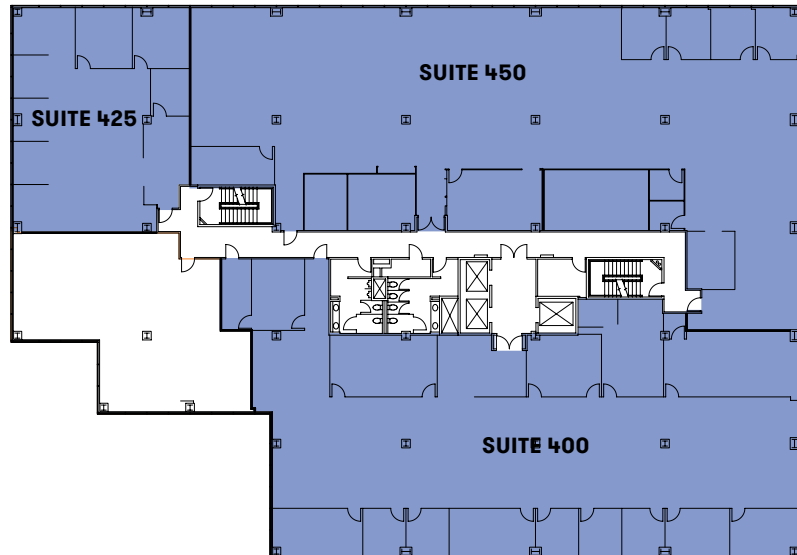
### SUITE 450

7,855 SF

(FLOOR CONTIGUOUS TO 21,100 SF)

AVAILABLE DECEMBER 1, 2019

### SITE PLAN

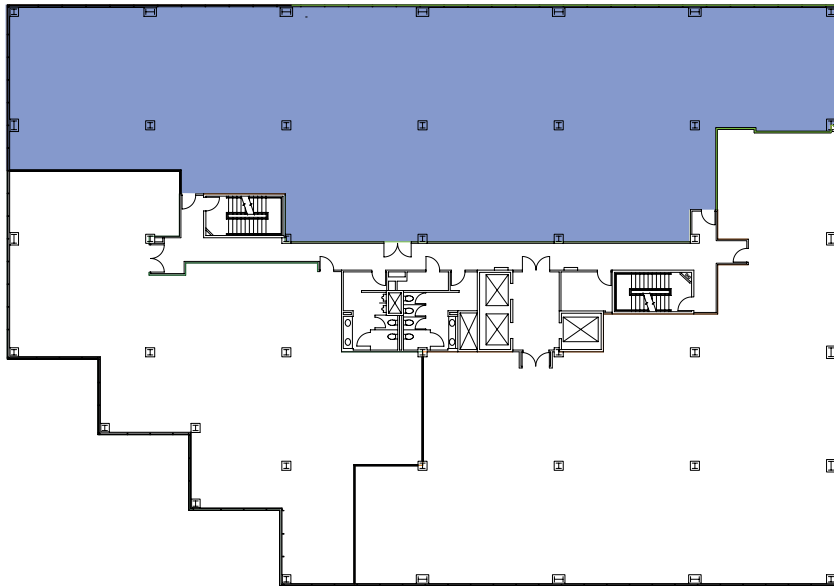




## 6TH FLOOR - 9605 SCRANTON ROAD

### SUITE 600

9,354 SF  
(DIVISIBLE TO 3,000 SF)  
SHELL CONDITION



### SITE PLAN



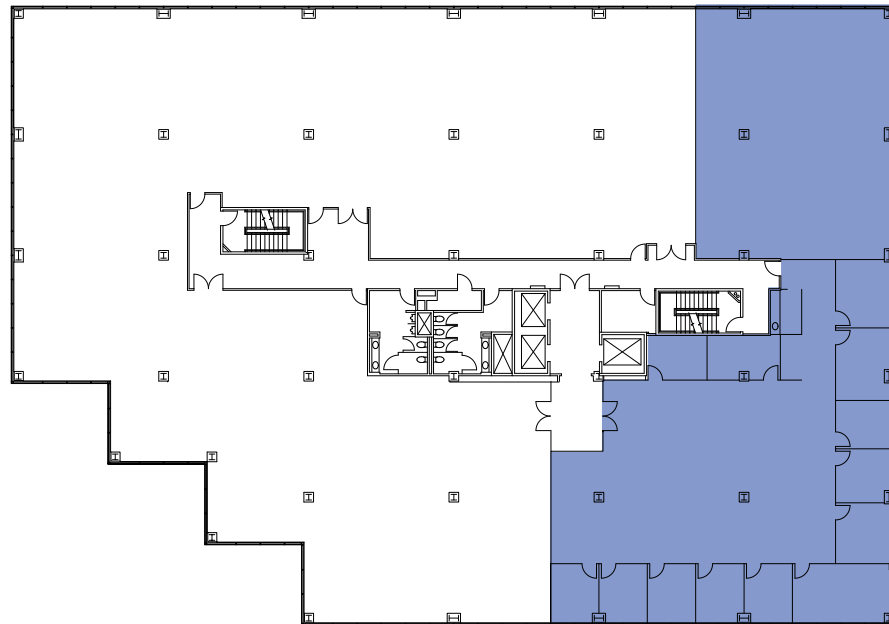


## 7TH FLOOR - 9605 SCRANTON ROAD

### SUITE 750

7,510 SF

#### SITE PLAN

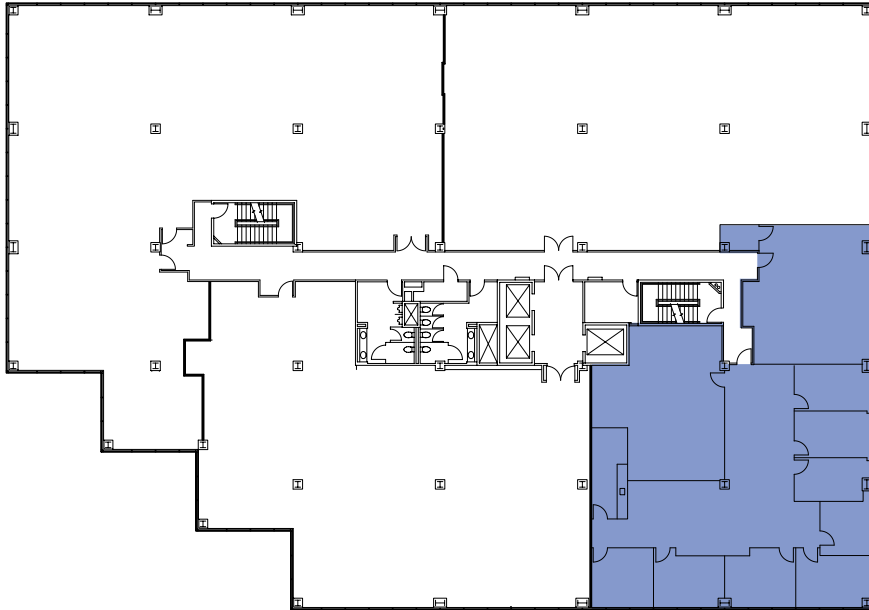




## 8TH FLOOR - 9605 SCRANTON ROAD

### SUITE 860

4,671 SF



### SITE PLAN





# 1ST FLOOR - 9805 SCRANTON ROAD

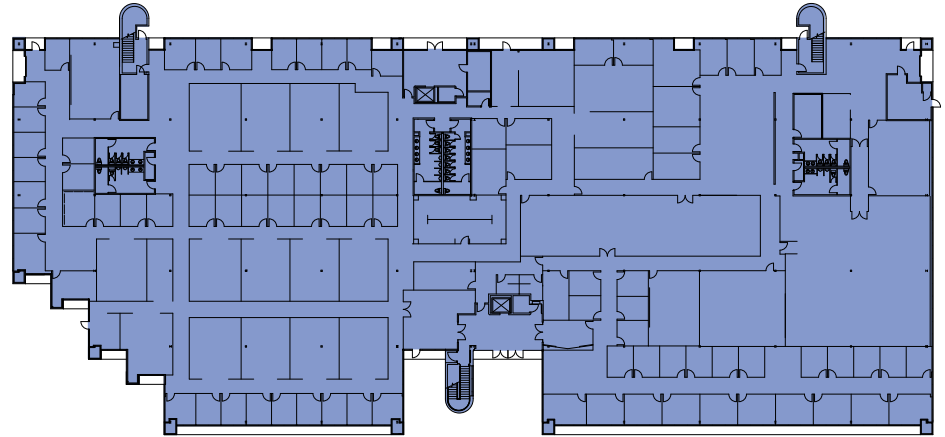
## SUITE 100

59,340 SF

(CONTIGUOUS TO 111,084 SF)

AVAILABLE AUGUST 15, 2019

## SITE PLAN





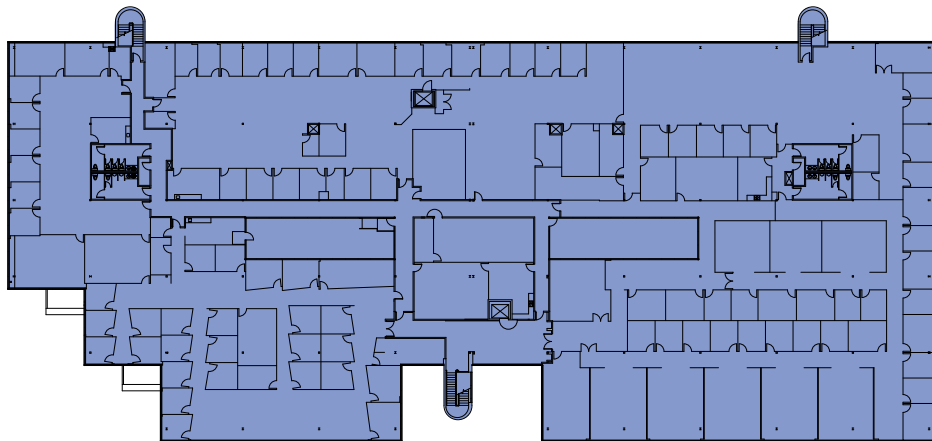
## 2ND FLOOR - 9805 SCRANTON ROAD

### SUITE 200

51,744 SF

[CONTIGUOUS TO 111,084 SF]

AVAILABLE AUGUST 15, 2019



SITE PLAN





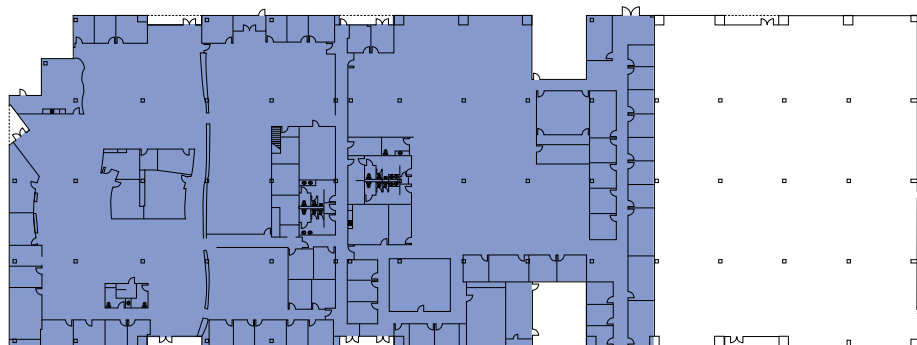
# 1ST FLOOR - 9855 SCRANTON ROAD

## SUITE 150

47,818 SF

AVAILABLE AUGUST 15, 2019

### SITE PLAN



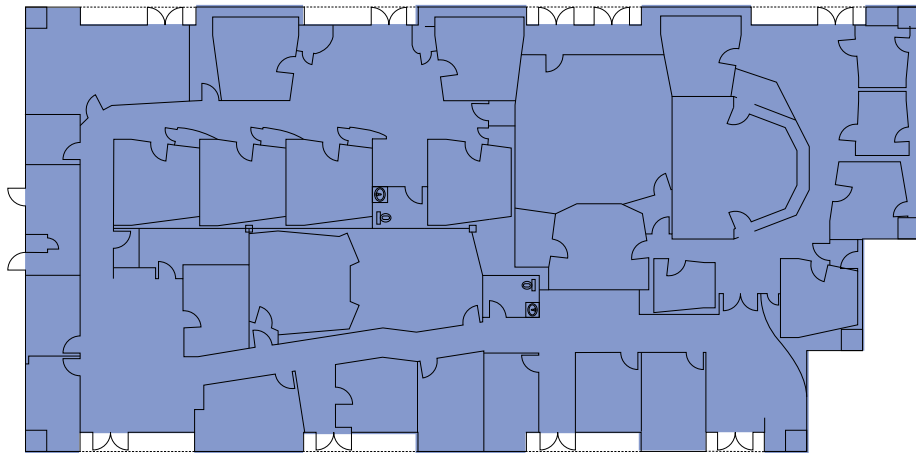


# 1ST FLOOR - 10055 BARNES CANYON ROAD

## SUITE 100

14,171 SF

AVAILABLE AUGUST 15, 2019



## SITE PLAN





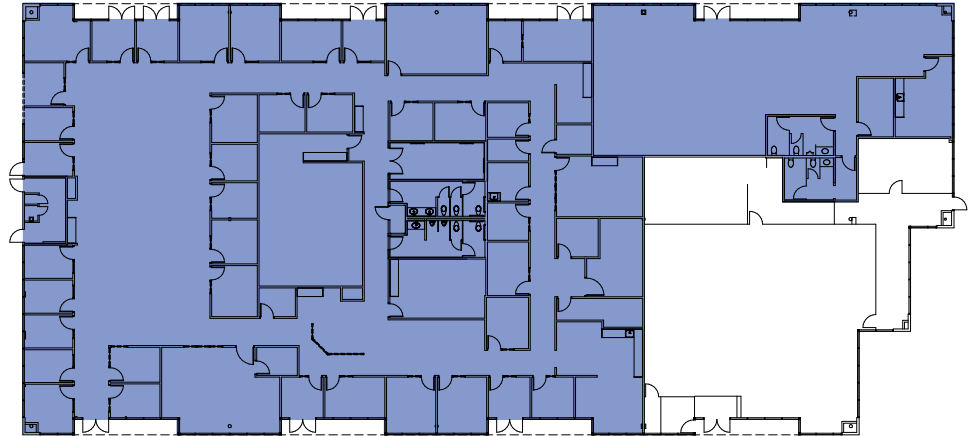
## 1ST FLOOR - 10065 BARNES CANYON ROAD

### SUITE 150

17,939 SF

(DIVISIBLE TO 10,000 SF)

### SITE PLAN



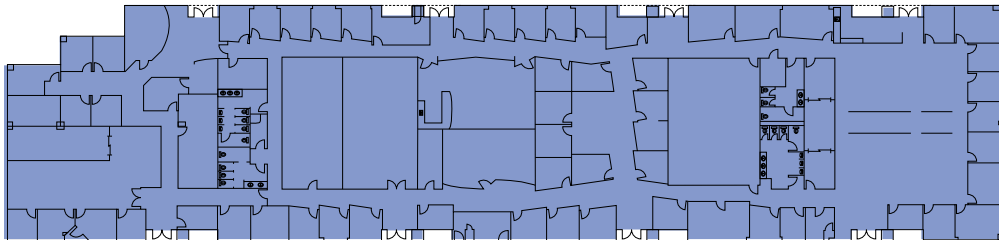


# 1ST FLOOR - 10075 BARNES CANYON ROAD

## SUITE 100

27,814 SF

AVAILABLE AUGUST 15, 2019



## SITE PLAN











**BRETT WARD**

**BRIAN STARCK**

**MICHAEL CASSOLATO**