



CUSHMAN &
WAKEFIELD

UP TO 9,885 SF
FOR LEASE

CENTRAL PARK PLAZA

340 12 AVENUE SW
Calgary, AB

BUILDING HIGHLIGHTS



125,091 SF
Building Size

Office Space

Suite 240	1,647 SF	→	Forthcoming Show Suite
Suite 311	3,101 SF		
Suite 340	4,471 SF		
Suite 430	1,960 SF	→	Show Suite
Suite 440	2,236 SF	→	Forthcoming Show Suite
Suite 500	9,883 SF	→	Full Floor
Suite 750	1,705 SF	→	Forthcoming Show Suite
Suite 800	9,885 SF	→	Full Floor
Suite 1010	2,152 SF	→	Show Suite
Suite 1410	1,093 SF		

LOCATED ON THE EDGE OF THE CALGARY DOWNTOWN CORE

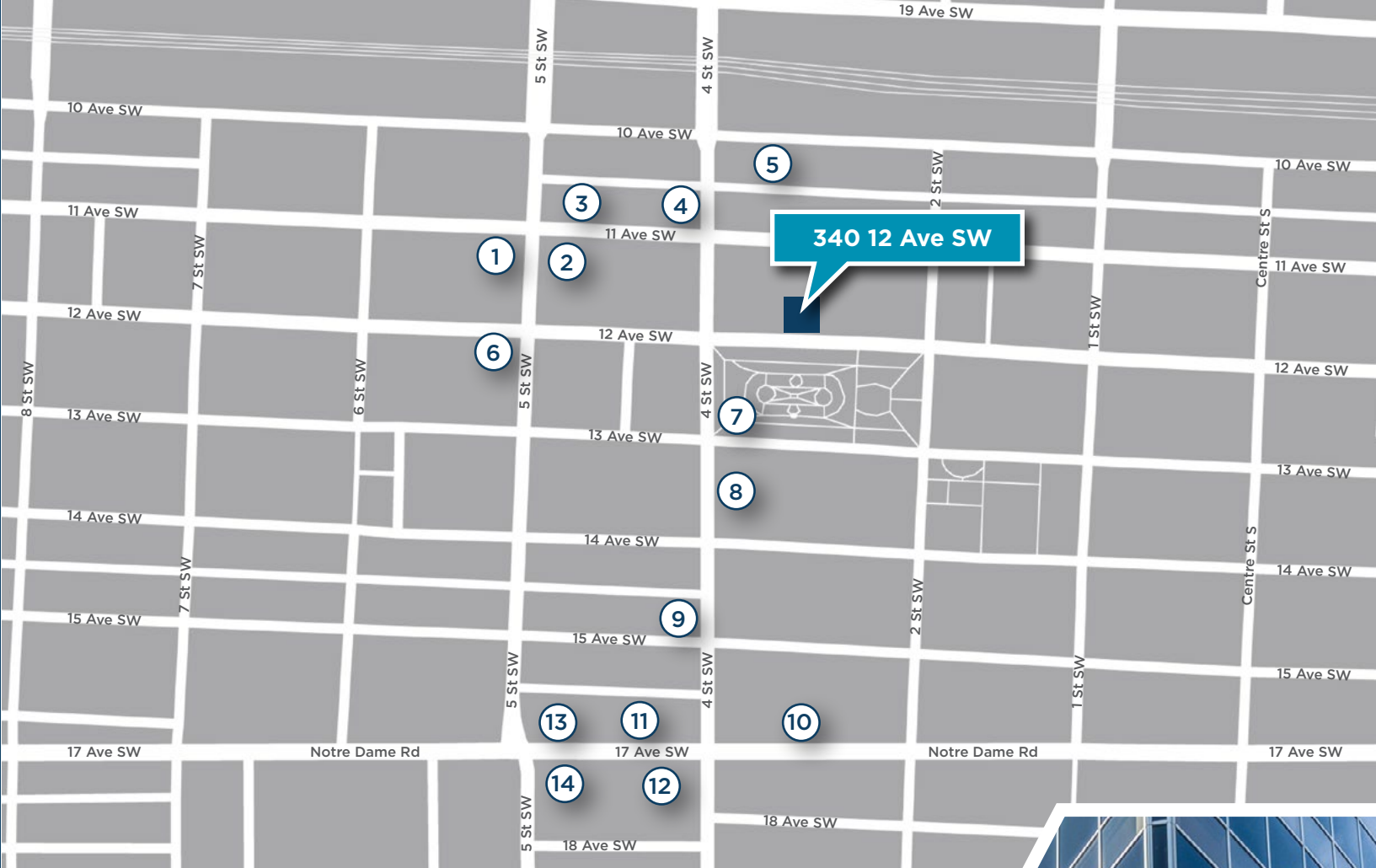
Lease Rates
Market Rates

\$17.44 PSF (Est. 2025)
Operating Costs

Immediately
Availability

1:1,300 SF
Parking Ratio

\$360 per stall, per month
Underground Parking Rate



PROPERTY HIGHLIGHTS

- Property is owned by Concert Properties and managed by BentallGreenOak.
- Flexible lease terms and a variety of suites are available.
- Building signage and naming rights are available.
- Tenant conference facility on the 2nd floor.

AMENITIES MAP

1. Last Best Brewing & Distilling, Modern Love, REGRUB
2. Canadian Pizza Unlimited , Singapore Sam's, StreEATS Beltline Kitchen
3. Passage Studios, Massage Heights
4. Tim Hortons
5. Rodney's Oyster House, CRAFT Beer Market, National on 10th, Japanese Village
6. Hudsons Canada's Pub
7. Park by Sidewalk Citizen
8. Pho Daddy, I Love You Coffee Shop, Happy Together Food Store
9. Red Diner on 4th
10. Calcutta Cricket Club
11. Second Cup Coffee Co, Lulu Bar, The Living Room, One Night Stan's, Cleaver
12. PinBar, A&W, King of Donair
13. The Ship & Anchor, National on 17th
14. Tim Hortons, Shell, Cafe Med

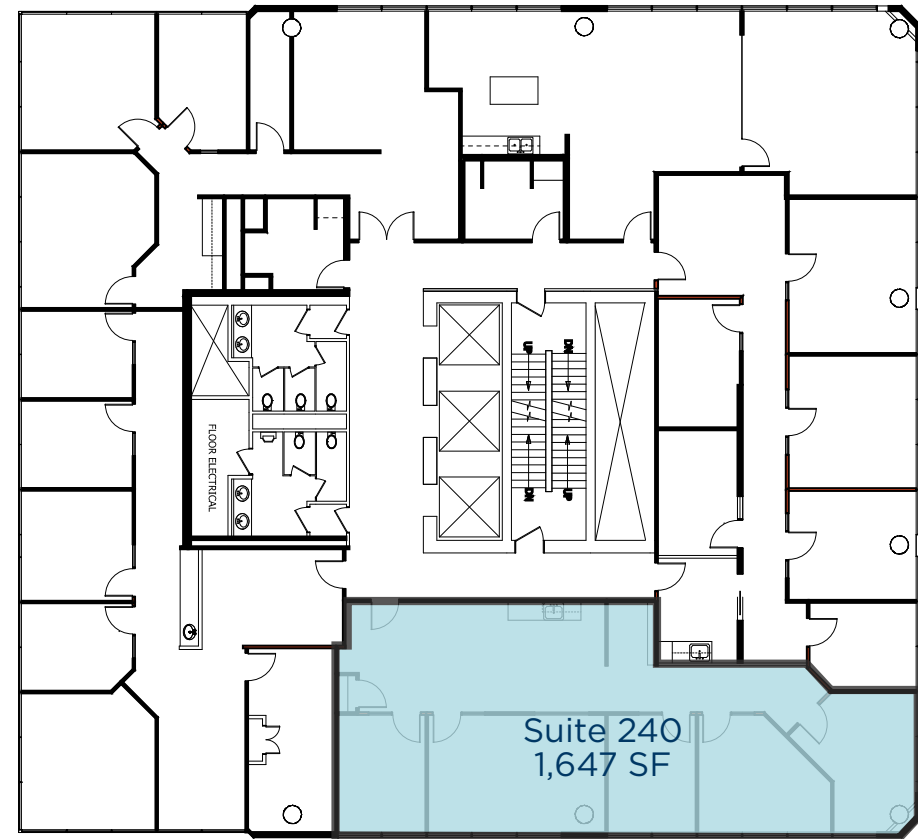


FLOOR PLANS

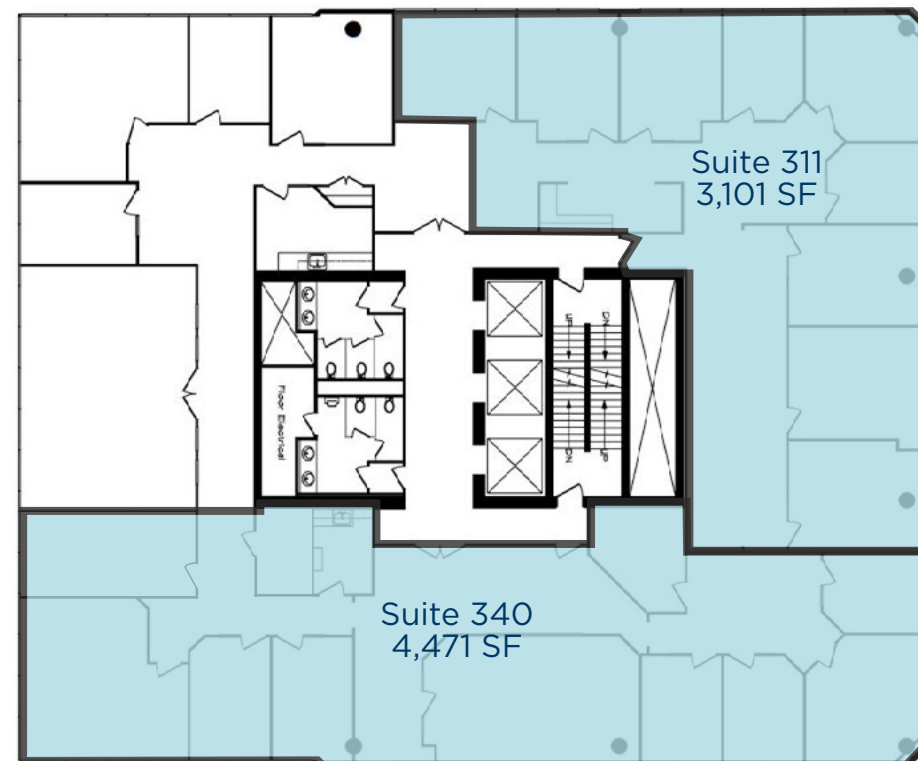


FLOOR PLANS

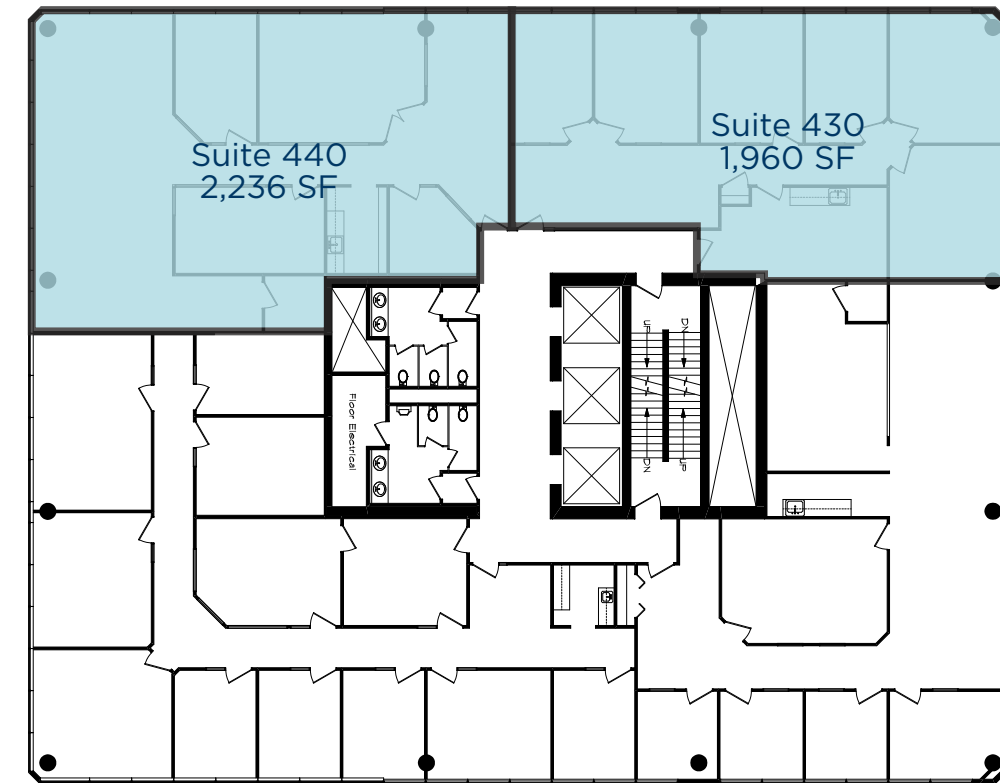
2nd Floor - Suite 240: 1,647 SF (Forthcoming Show Suite)



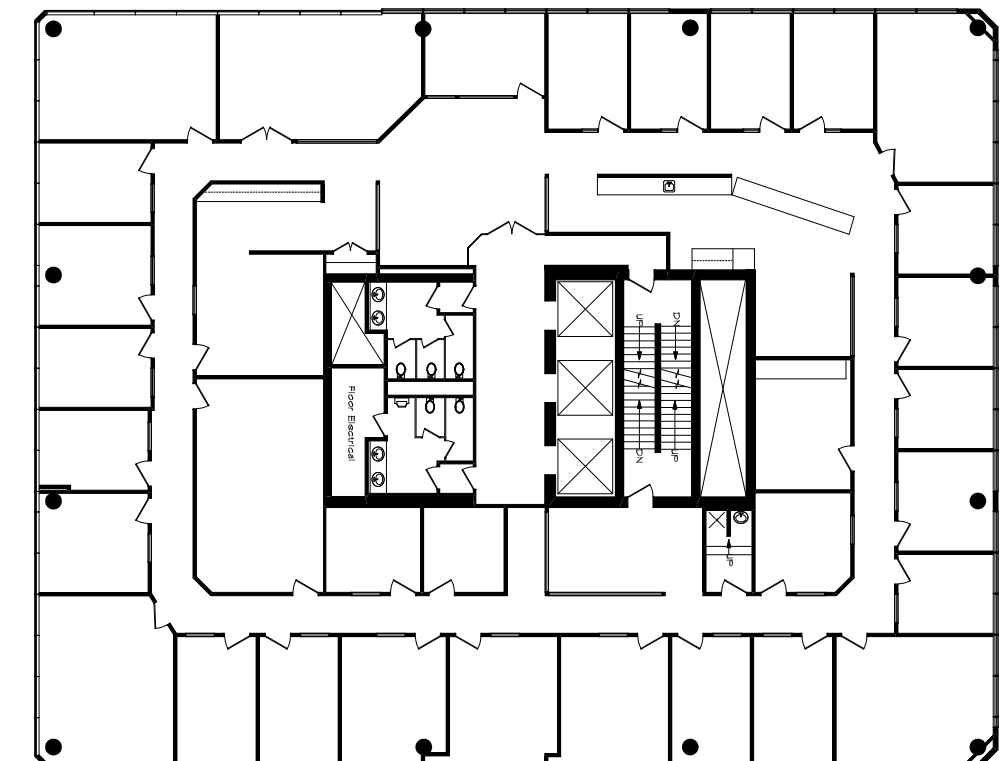
3rd Floor - Suite 311: 3,101 SF & Suite 340: 4,471 SF



4th Floor - Suite 430: 1,960 SF (Show Suite)
Suite 440: 2,236 SF (Forthcoming Show Suite)



5th Floor - Suite 500: 9,883 SF (Full Floor)

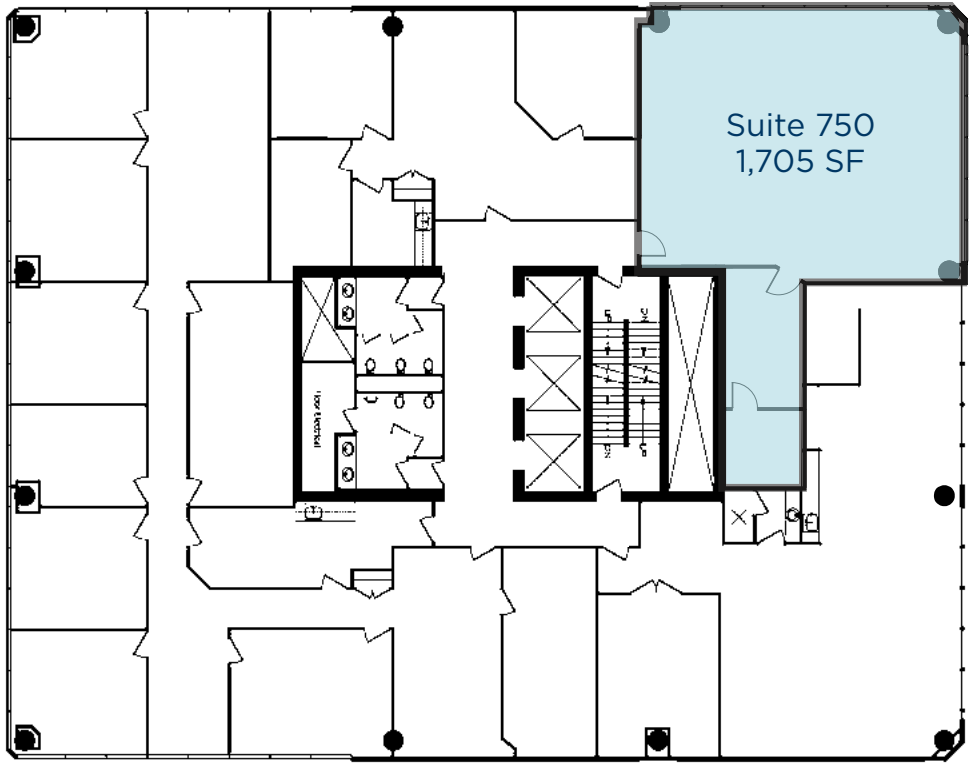


FLOOR PLANS

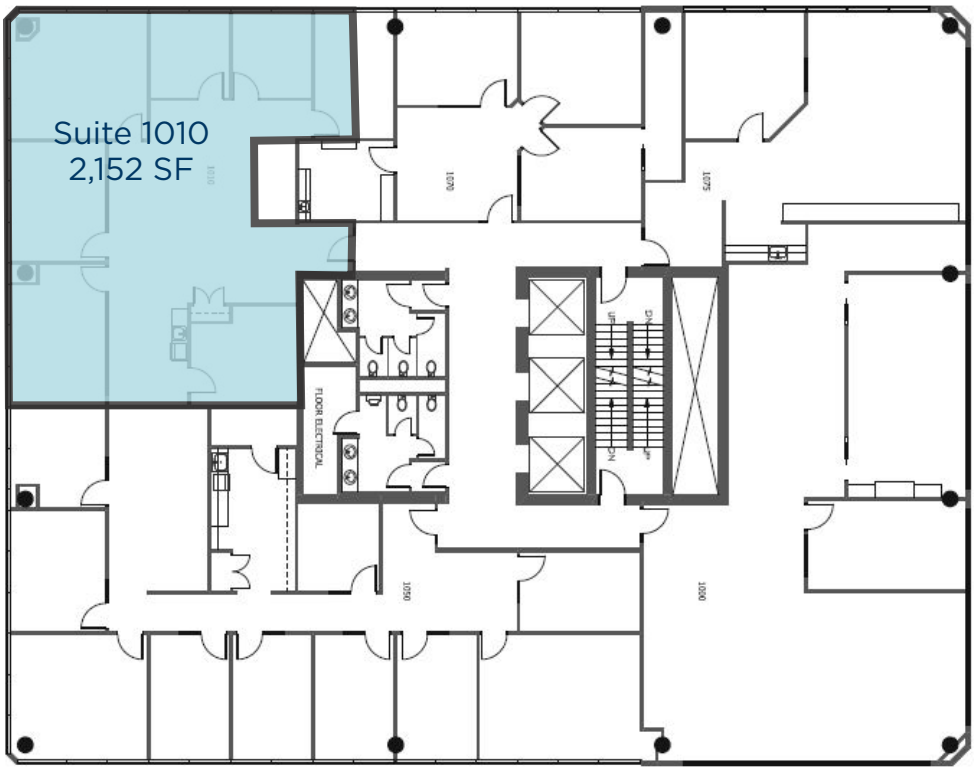


FLOOR PLANS

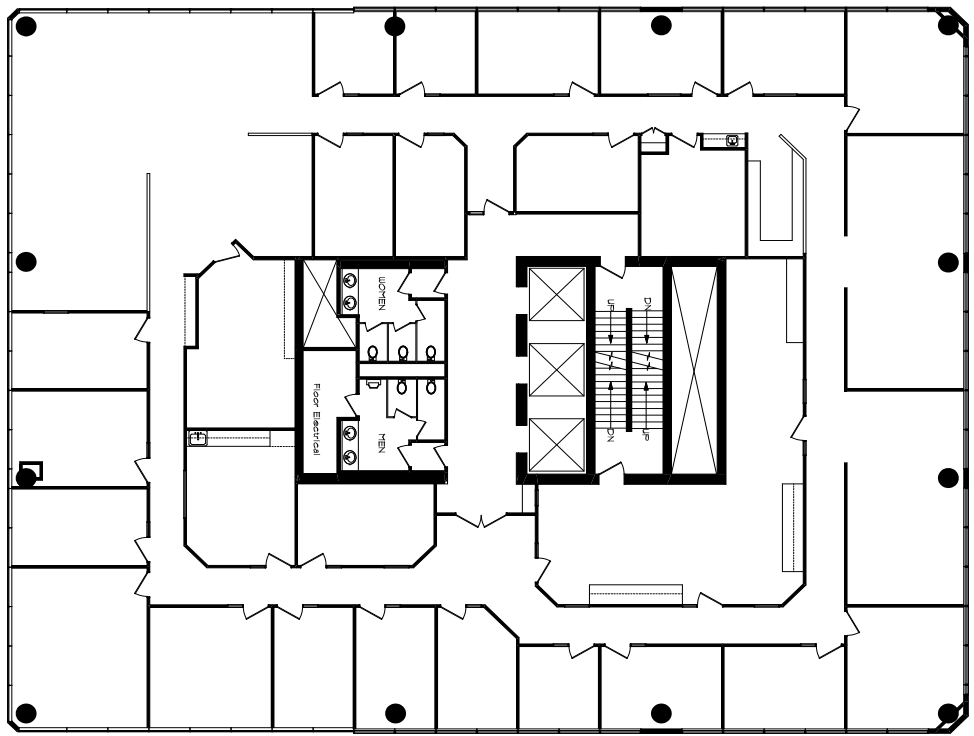
7th Floor - Suite 750: 1,705 SF (Forthcoming Show Suite)



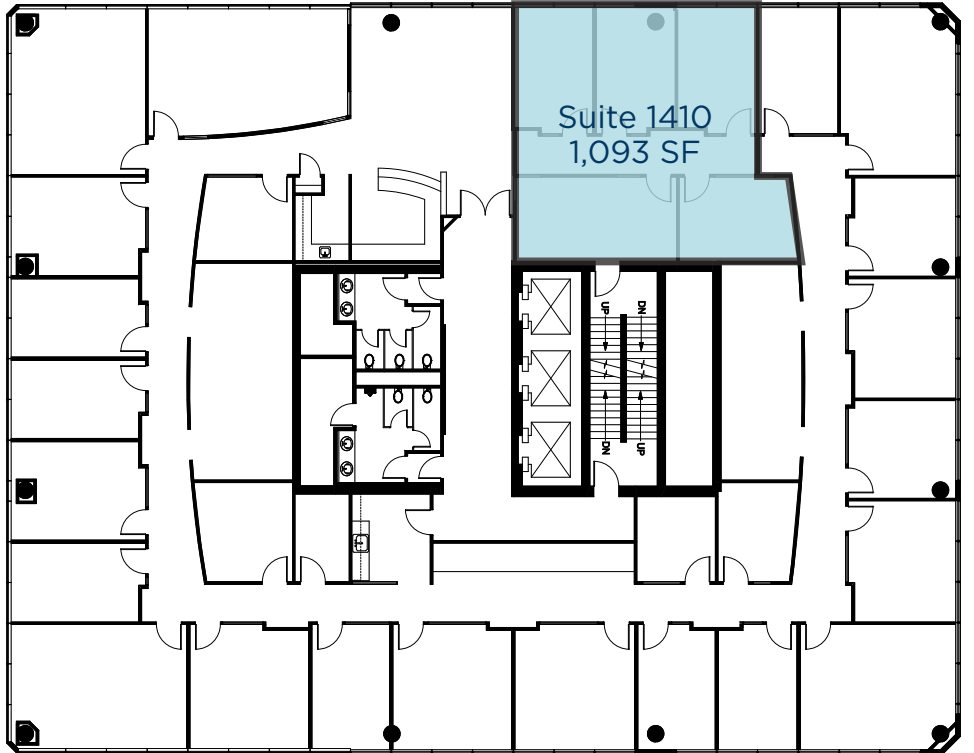
10th Floor - Suite 1010: 2,152 SF (Show Suite)



8th Floor - Suite 800: 9,885 SF (Full Floor)



14th Floor - Suite 1410: 1,093 SF





CONTACT

CUSHMAN & WAKEFIELD ULC

250 6th Avenue SW, Suite 2400 | Calgary, Alberta T2P 3H7
Office +1 403 261 1111 | cushmanwakefield.com

Adam Ramsay

Executive Vice President
Office Leasing & Sales
D. +1 403 261 1103
M. +1 403 660 6390
adam.ramsay@cushwake.com

David Lees

Executive Vice President
Office Leasing & Sales
D. +1 403 261 1102
M. +1 403 869 5025
david.lees@cushwake.com

Trent Peterson

Vice President
Office Leasing & Sales
D. +1 403 261 1101
M. +1 403 771 5969
trent.peterson@cushwake.com

©2025 Cushman & Wakefield. All rights reserved. The information contained in this communication is strictly confidential. This information has been obtained from sources believed to be reliable but has not been verified. NO WARRANTY OR REPRESENTATION, EXPRESS OR IMPLIED, IS MADE AS TO THE CONDITION OF THE PROPERTY (OR PROPERTIES) REFERENCED HEREIN OR AS TO THE ACCURACY OR COMPLETENESS OF THE INFORMATION CONTAINED HEREIN, AND SAME IS SUBMITTED SUBJECT TO ERRORS, OMISSIONS, CHANGE OF PRICE, RENTAL OR OTHER CONDITIONS, WITHDRAWAL WITHOUT NOTICE, AND TO ANY SPECIAL LISTING CONDITIONS IMPOSED BY THE PROPERTY OWNER(S). ANY PROJECTIONS, OPINIONS OR ESTIMATES ARE SUBJECT TO UNCERTAINTY AND DO NOT SIGNIFY CURRENT OR FUTURE PROPERTY PERFORMANCE.

