



AT FRIENDLY CENTER  
**SIGNATURE**  
PLACE

3200 NORTHLINE AVENUE | GREENSBORO, NC 27408





## PROPERTY HIGHLIGHTS

Return to the office with a freshly designed space in the heart of Greensboro's most popular submarket

Three-Story Class A Office Space

Immediate proximity to Friendly Shopping center located in Green Valley office submarket

Flexible office sizes with large floorplates to accommodate various office layouts

Free, ample covered parking

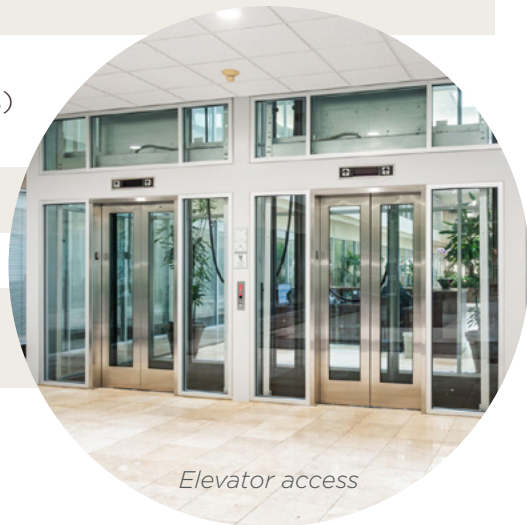
Recent building upgrades include:

- Improved access from parking areas (automatic doors)
- Interior renovations/upgrades

Escalator access from P3 to 1st Floor

Elevator access from all parking levels

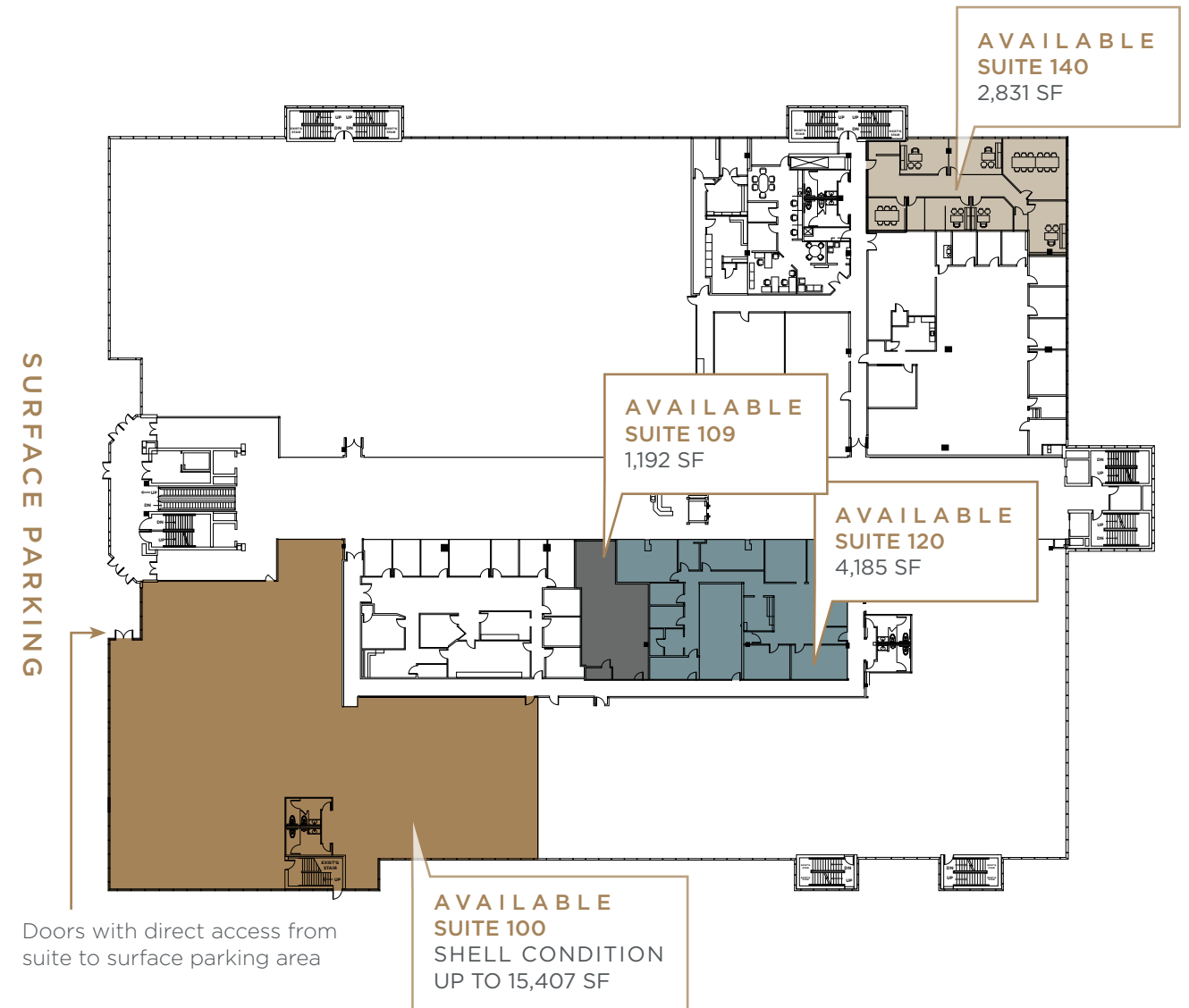
Numerous dining, retail and service amenities within walking distance



Elevator access



## FIRST FLOOR AVAILABILITY



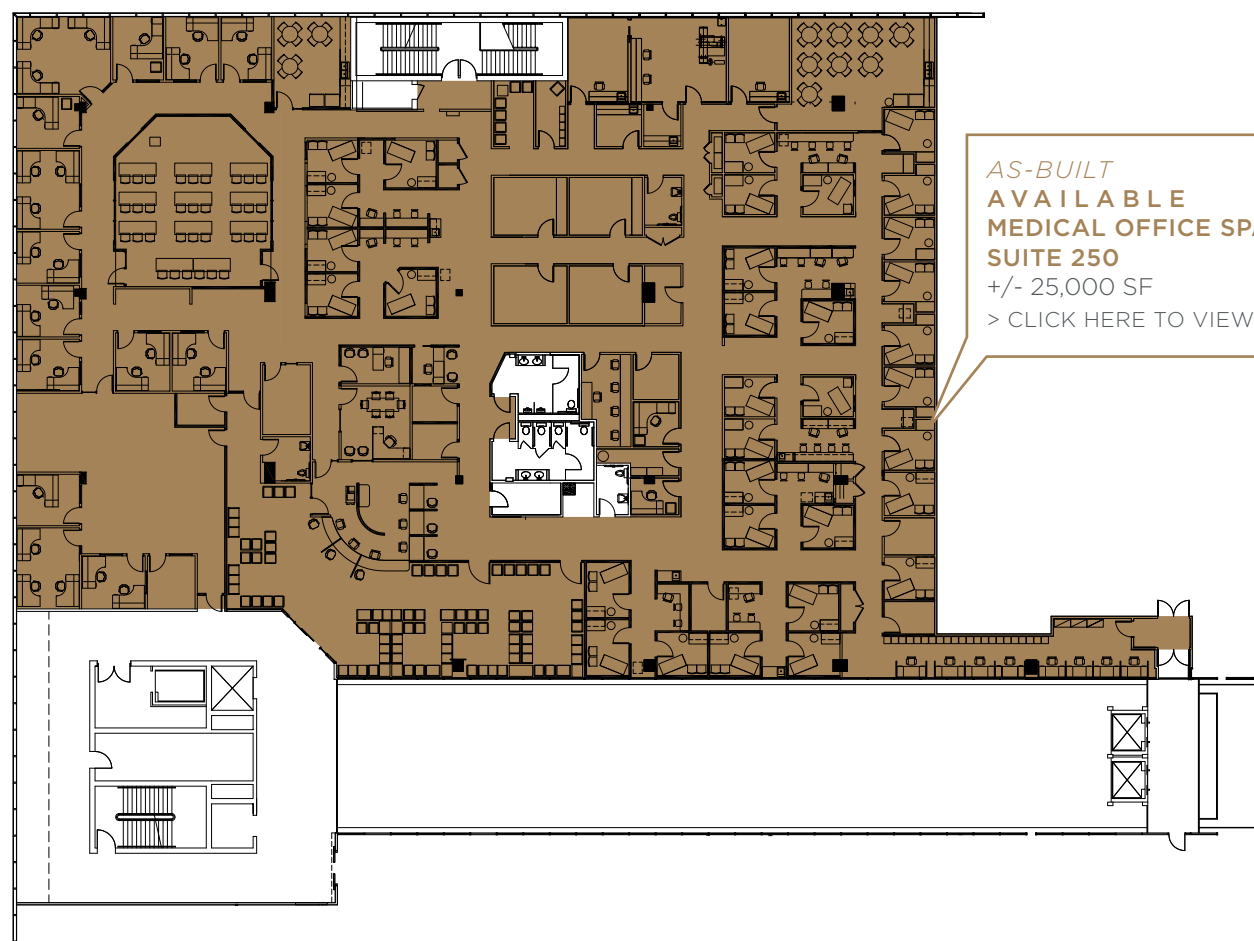




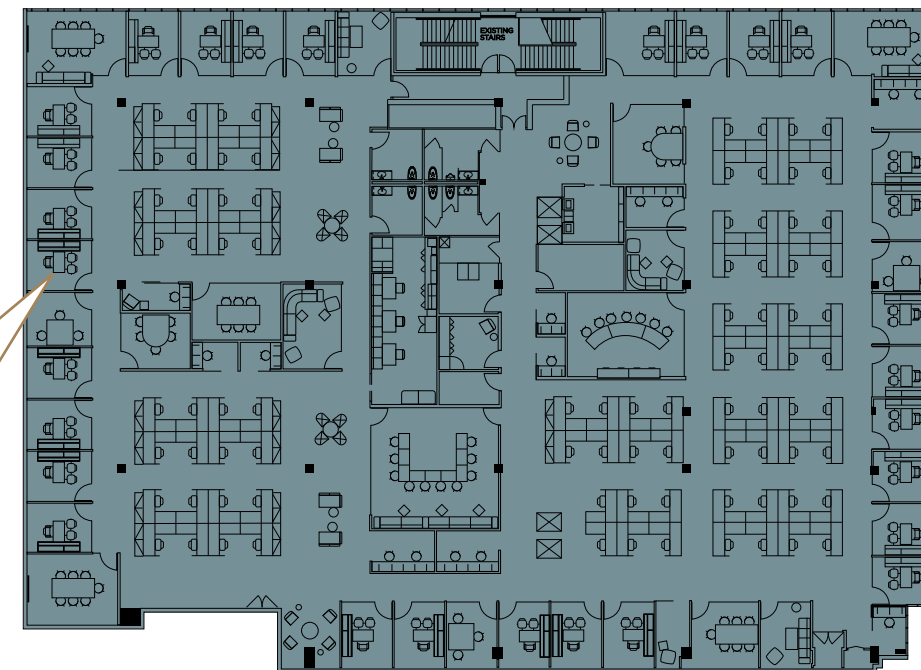
## SECOND FLOOR AVAILABILITY SUITES



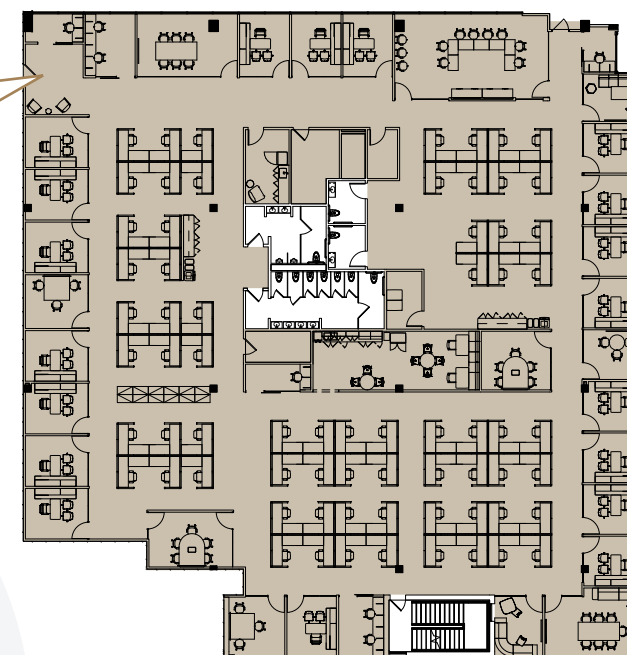
CLICK HERE  
TO VIEW  
THE 3D WALK  
THROUGH



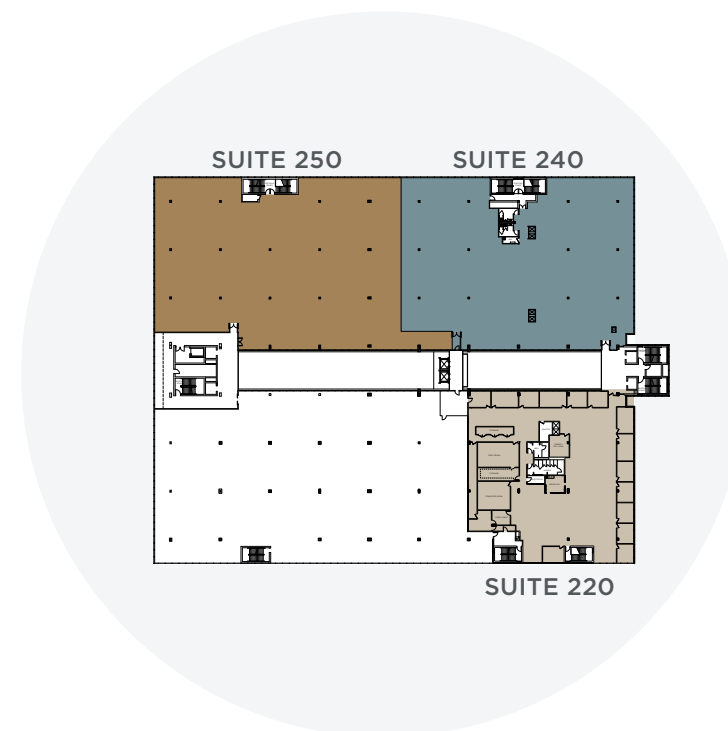
AS-BUILT  
AVAILABLE  
MEDICAL OFFICE SPACE  
SUITE 250  
+/- 25,000 SF  
> [CLICK HERE TO VIEW PDF](#)



CONCEPTUAL LAYOUT  
AVAILABLE  
TEST FIT SAMPLE - SUITE 240  
23,399 SF  
> [CLICK HERE TO VIEW PDF](#)



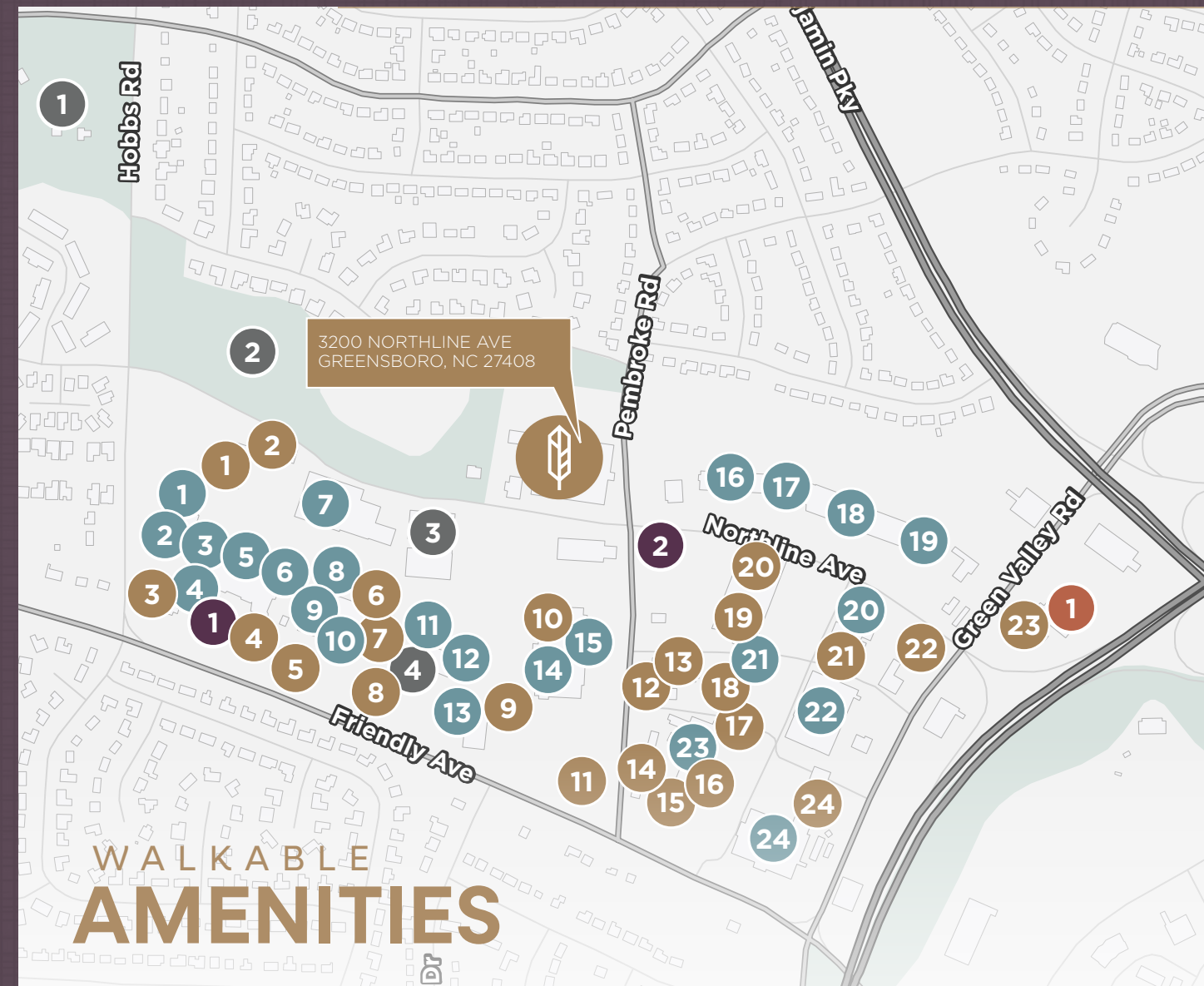
CONCEPTUAL LAYOUT  
AVAILABLE  
TEST FIT SAMPLE - SUITE 220  
16,029 SF  
> [CLICK HERE TO VIEW PDF](#)







## THIRD FLOOR AVAILABILITY



### ENTERTAINMENT

- 1 BICENTENNIAL GARDENS
- 2 BOTANICAL GARDENS
- 3 REGAL CINEMAS
- 4 WINESTYLES

### FITNESS

- 1 PURE BARRE
- 2 STRETCHLAB
- 3 O2 FITNESS

### HOTELS

- 1 O'HENRY HOTEL

### RESTAURANTS

- 1 CAVA
- 2 MARIO'S PIZZA
- 3 FLEMING'S STEAKHOUSE
- 4 PF CHANG'S
- 5 BRAVO ITALIANO
- 6 JASON'S DELI
- 7 CHOPT SALAD CO
- 8 MIMI'S CAFE
- 9 PIEOLOGY
- 10 GENJI SUSHI
- 11 CHICK-FIL-A
- 12 FIVE GUYS
- 13 JUICESHOP
- 14 THE CHEESECAKE FACTORY
- 15 HARPER'S
- 16 PITA DELITE
- 17 US SUSHI
- 18 MOE'S SOUTHWEST GRILL
- 19 COLD STONE CREAMERY
- 20 CARIBOU COFFEE
- 21 POBLANO'S
- 22 MCDONALD'S
- 23 GREEN VALLEY GRILL

### RETAIL

- 1 ULTA BEAUTY
- 2 DSW
- 3 REI
- 4 CARHARTT
- 5 LULULEMON
- 6 BROOKS BROTHERS
- 7 HARRIS TEETER
- 8 CHICO'S
- 9 WARBY PARKER
- 10 TALBOT'S
- 11 WILLIAMS SONOMA
- 12 APPLE STORE
- 13 POTTERY BARN
- 14 WHOLE FOODS MARKET
- 15 FRIENDLY CENTER
- 16 BIRKENSTOCK
- 17 BARNES & NOBLE
- 18 OLD NAVY
- 19 WALGREENS
- 20 AT&T STORE
- 21 ATHLETA
- 22 MACY'S
- 23 ORVIS
- 24 BELK







FOR MORE INFORMATION, PLEASE CONTACT:

RYAN GIOFFRE  
Senior Director  
+1 336 821 3822  
[ryan.gioffre@cushwake.com](mailto:ryan.gioffre@cushwake.com)

RYAN CONBOY, SIOR  
Managing Director  
+1 336 821 3832  
[ryan.conboy@cushwake.com](mailto:ryan.conboy@cushwake.com)



AT FRIENDLY CENTER

**SIGNATURE**  
PLACE

