

ANAHEIM CITY CENTRE

222 S. HARBOR BOULEVARD
ANAHEIM, CA



HARBOR
ASSOCIATES



**CUSHMAN &
WAKEFIELD**

BUILDING HIGHLIGHTS

- Iconic, 10-Story, ±194,892 SF Class A office high-rise offering amazing views of historic downtown Anaheim area
- Featuring extensive glass lines and rose colored granite facade
- On-site property management and security guard
- Storage units available from 150-220 SF
- Abundant 4/1,000 parking in structure adjacent to the building
- Located at the intersection of South Harbor Boulevard & West Broadway, east of the 5 Freeway and south of the 91 Freeway
- Suites available from 1,900–18,350 SF (full floor opportunity)
- Urban re-development area with new residential within walking distance



NEW LOBBY



NEW ELEVATORS



VIRTUAL TOUR



VIRTUAL TOUR

AREA HIGHLIGHTS

- Adjacent to Center Street Promenade, featuring Anaheim's award-winning restaurateurs, artisan shops, Muzeo Museum, Carnegie Library and City Hall
- Easy access to a multimodal transportation network anchored by nearby Anaheim Regional Transportation Intermodal Center (ARTIC)
- Serviced by FRAN (Free Rides Around the Neighborhood) the on-demand, free to use, micro-transit system of sustainable electric vehicles serving Anaheim's downtown area
- Significant revitalization of Downtown Anaheim, led by approximately 4,900 new homes and apartments, plus more than 2,800 planned and under construction
- Just steps away from The Packing House - OC's original and trending food hall with more than 30 eateries and 4 breweries
- Only minutes from Angel Stadium, Honda Center, John Wayne Airport, and popular beach attractions



AVAILABILITY

Suite	Contiguous	Size (RSF)	Details	Virtual Tour
200		18,350	Full floor in shell condition with unique large block opportunity	
400		15,296	Features 10 offices, 2 conference rooms, large kitchen, small kitchen, lounge, IT room and storage room	
430	19,387 Full Floor	2,160	Features 3 offices, conference room, kitchen and storage room	
435		1,930	Features 3 offices, conference room, open kitchen area	

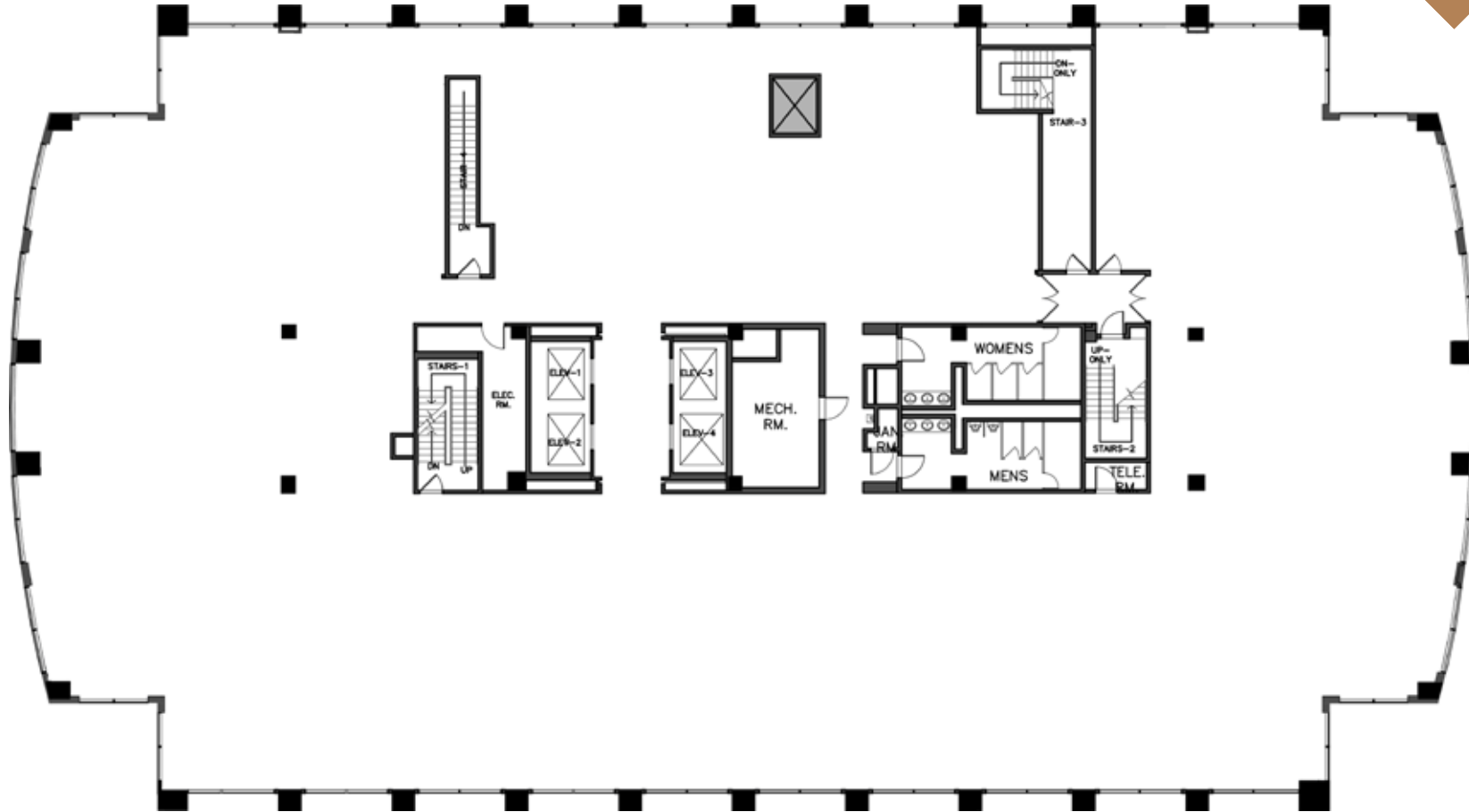


NEIGHBORHOOD AMENITIES



2ND FLOOR

SUITE 200 / 18,350 RSF



For more information, please contact:

JOHN HARTY
+1 949 372 4910
john.harty@cushwake.com
Lic. #01121203

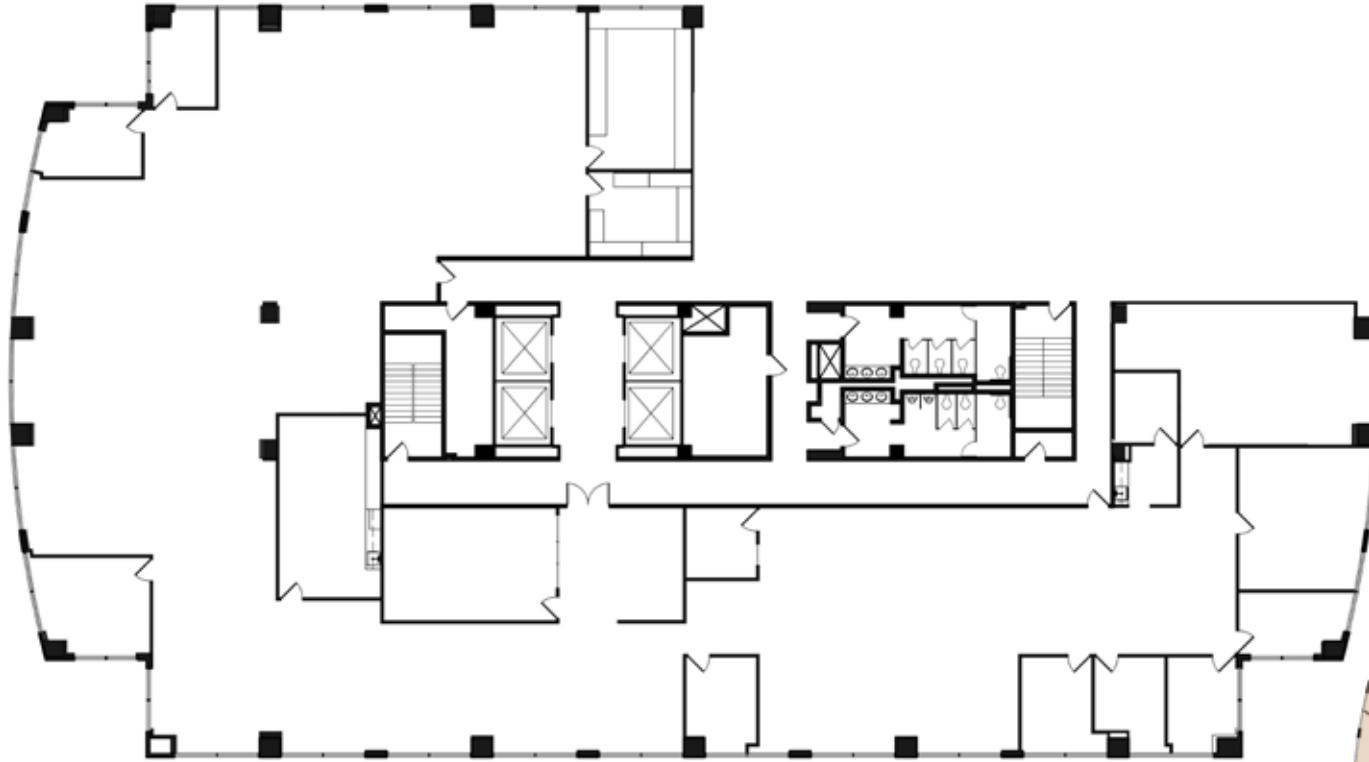
JASON WARD
+1 949 955 7640
jason.ward@cushwake.com
Lic. #01802243

18111 Von Karman Ave., Suite 1000 / Irvine, CA 92612

©2024 Cushman & Wakefield. All rights reserved. The information contained in this communication is strictly confidential. This information has been obtained from sources believed to be reliable but has not been verified. No warranty or representation, express or implied, is made as to the condition of the property (or properties) referenced herein or as to the accuracy or completeness of the information contained herein, and same is submitted subject to errors, omissions, change of price, rental or other conditions, withdrawal without notice, and to any special listing conditions imposed by the property owner(s). Any projections, opinions or estimates are subject to uncertainty and do not signify current or future property performance.

4TH FLOOR

SUITE 400 / 15,296 RSF



For more information, please contact:

JOHN HARTY
+1 949 372 4910
john.harty@cushwake.com
Lic. #01121203

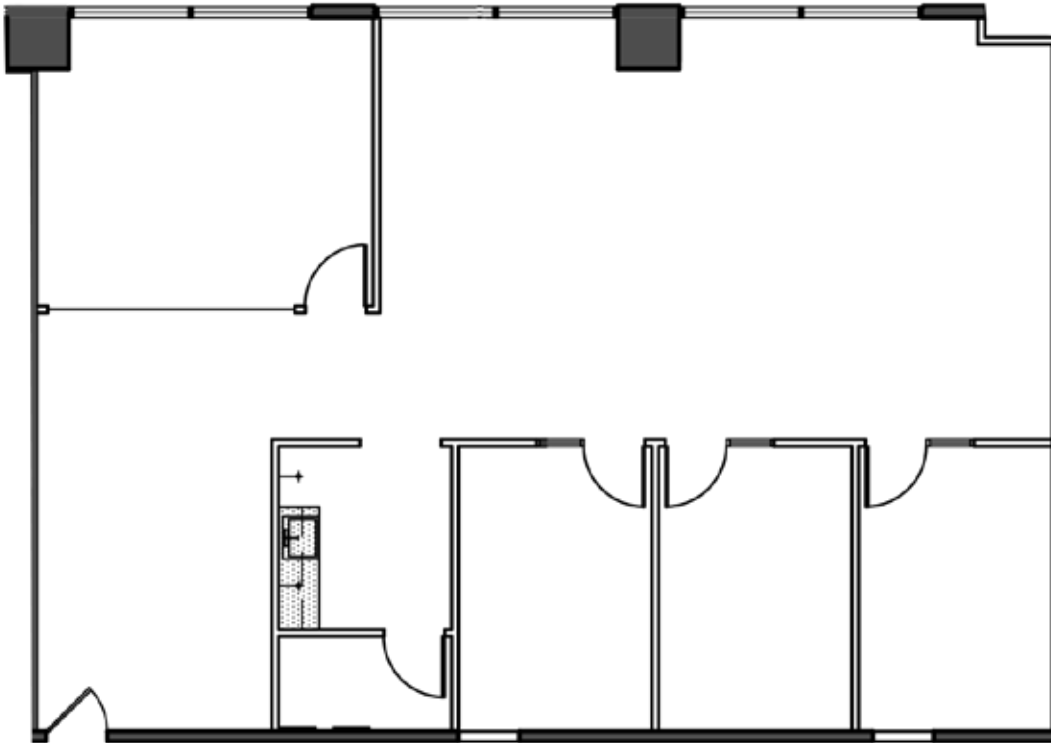
JASON WARD
+1 949 955 7640
jason.ward@cushwake.com
Lic. #01802243

18111 Von Karman Ave., Suite 1000 / Irvine, CA 92612

©2024 Cushman & Wakefield. All rights reserved. The information contained in this communication is strictly confidential. This information has been obtained from sources believed to be reliable but has not been verified. No warranty or representation, express or implied, is made as to the condition of the property (or properties) referenced herein or as to the accuracy or completeness of the information contained herein, and same is submitted subject to errors, omissions, change of price, rental or other conditions, withdrawal without notice, and to any special listing conditions imposed by the property owner(s). Any projections, opinions or estimates are subject to uncertainty and do not signify current or future property performance.

4TH FLOOR

SUITE 430 / 2,160 RSF



For more information, please contact:

JOHN HARTY
+1 949 372 4910
john.harty@cushwake.com
Lic. #01121203

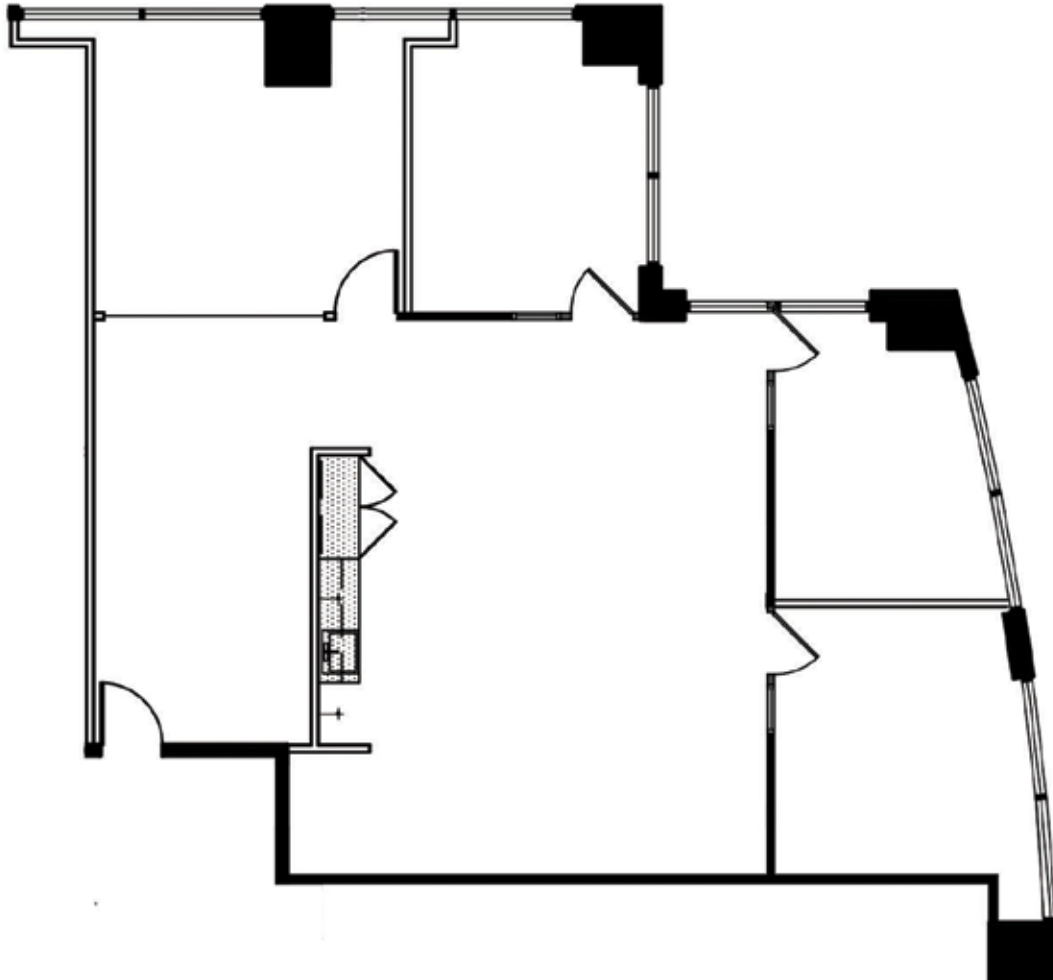
JASON WARD
+1 949 955 7640
jason.ward@cushwake.com
Lic. #01802243

18111 Von Karman Ave., Suite 1000 / Irvine, CA 92612

©2024 Cushman & Wakefield. All rights reserved. The information contained in this communication is strictly confidential. This information has been obtained from sources believed to be reliable but has not been verified. No warranty or representation, express or implied, is made as to the condition of the property (or properties) referenced herein or as to the accuracy or completeness of the information contained herein, and same is submitted subject to errors, omissions, change of price, rental or other conditions, withdrawal without notice, and to any special listing conditions imposed by the property owner(s). Any projections, opinions or estimates are subject to uncertainty and do not signify current or future property performance.

4TH FLOOR

SUITE 435 / 1,930 RSF



For more information, please contact:

JOHN HARTY
+1 949 372 4910
john.harty@cushwake.com
Lic. #01121203

JASON WARD
+1 949 955 7640
jason.ward@cushwake.com
Lic. #01802243

18111 Von Karman Ave., Suite 1000 / Irvine, CA 92612

©2024 Cushman & Wakefield. All rights reserved. The information contained in this communication is strictly confidential. This information has been obtained from sources believed to be reliable but has not been verified. No warranty or representation, express or implied, is made as to the condition of the property (or properties) referenced herein or as to the accuracy or completeness of the information contained herein, and same is submitted subject to errors, omissions, change of price, rental or other conditions, withdrawal without notice, and to any special listing conditions imposed by the property owner(s). Any projections, opinions or estimates are subject to uncertainty and do not signify current or future property performance.