

100
MONTGOMERY



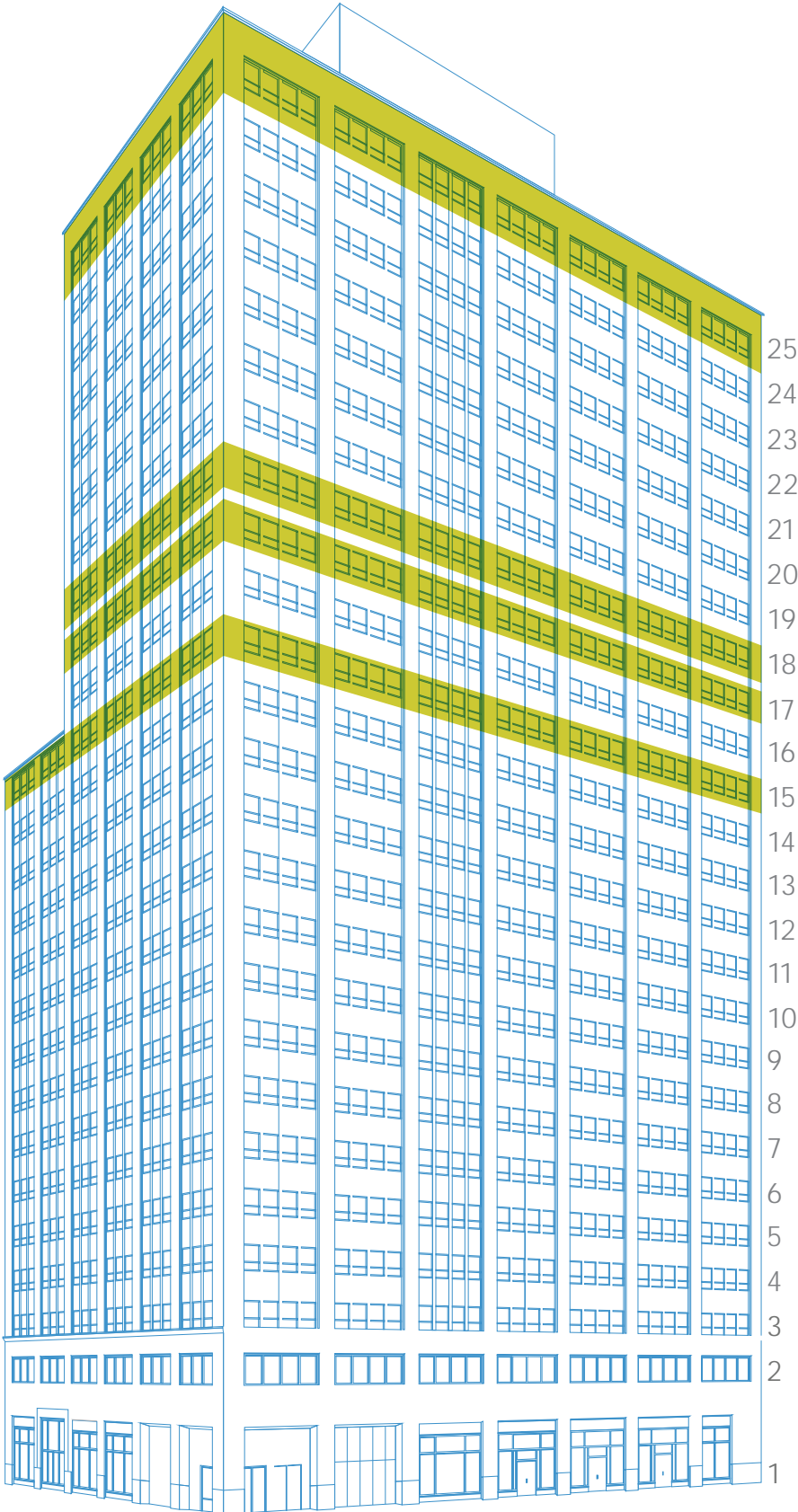
VANBARTON
GROUP

CUSHMAN &
WAKEFIELD



100
MONTGOMERY

Available Space



Floor	Suite	RSF	Available
25	2500	12,012	10/1/2020
18	1800	12,093	Q3 2020
17	1790	735	Now
15	1500	20,889	Now



VANBARTON
GROUP

CUSHMAN &
WAKEFIELD

[View Site Specific COVID-19 Prevention Plan](#)



100
MONTGOMERY

Building Highlights

- Creative and traditional build-outs
- Immediate access to Montgomery BART/Muni Station
- On-site gym with showers & lockers
- Secure bike storage
- 16th floor roof deck
- Conference Center
- Great natural light
- Operable windows & HVAC
- Prime corner location

VANBARTON
GROUP

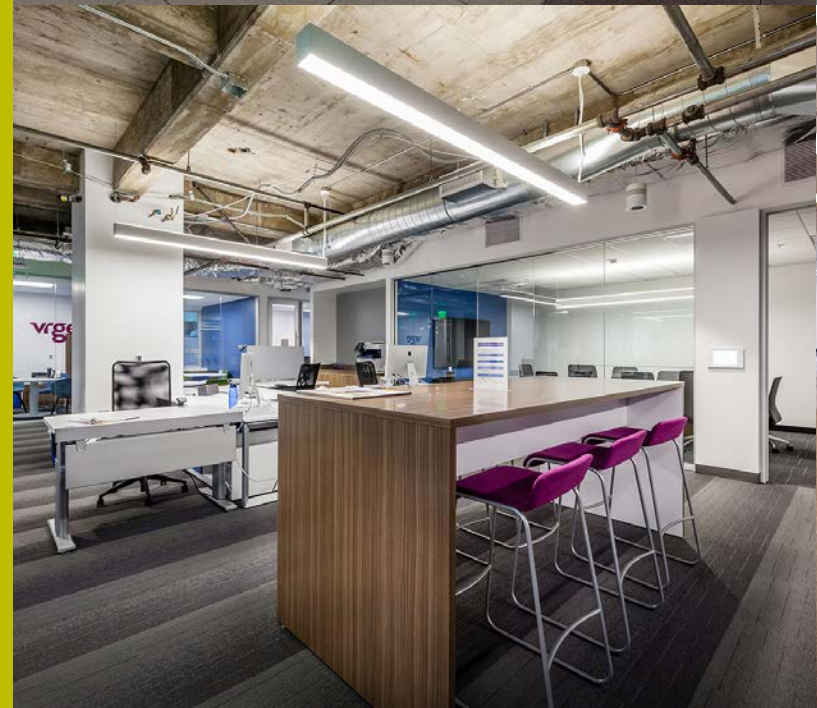
CUSHMAN &
WAKEFIELD



100
MONTGOMERY



100



VANBARTON
GROUP



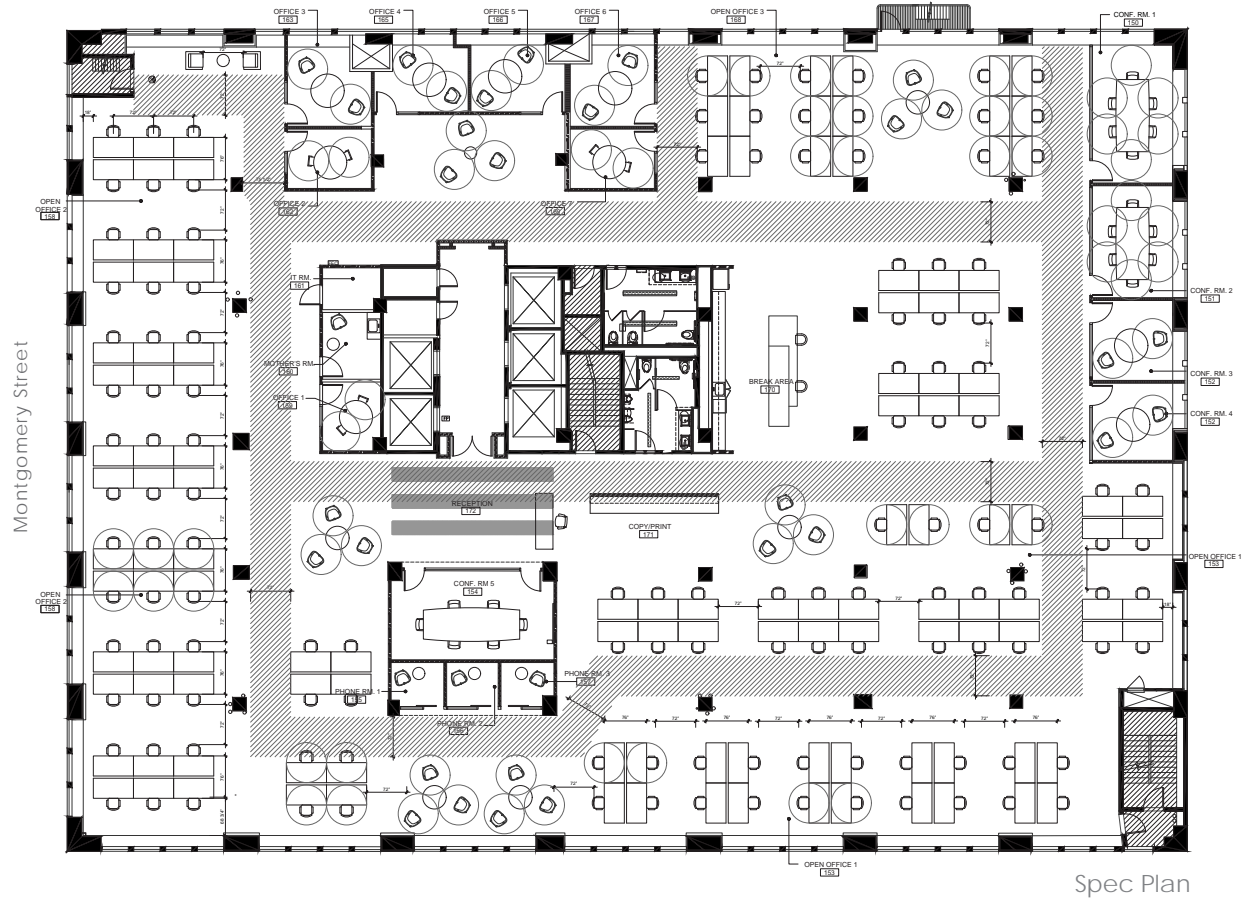
CUSHMAN &
WAKEFIELD



100
MONTGOMERY

Available Space Floor Plans

► SUITE 1500



- **Spec Suite Under Construction**
- 20,889 RSF
- Full Floor Opportunity
- Available Now
- **6-Foot Office Compliant** Floor Plan

► **VIRTUAL TOUR**

VANBARTON
GROUP

CUSHMAN &
WAKEFIELD

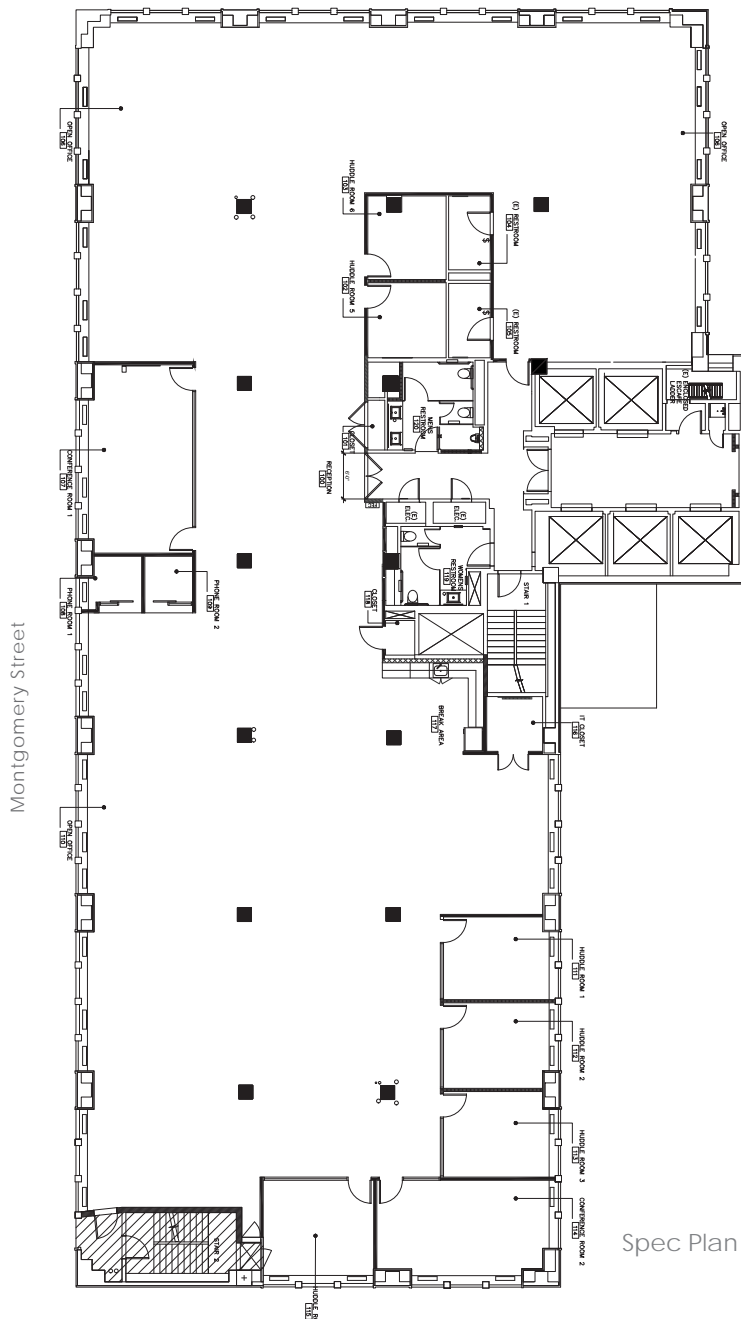




100
MONTGOMERY

Available Space Floor Plans

► SUITE 1800



Spec Plan

- 12,093 RSF
- Available 10/1/2020
- Full Floor Opportunity

[VIRTUAL TOUR](#)

VANBARTON
GROUP

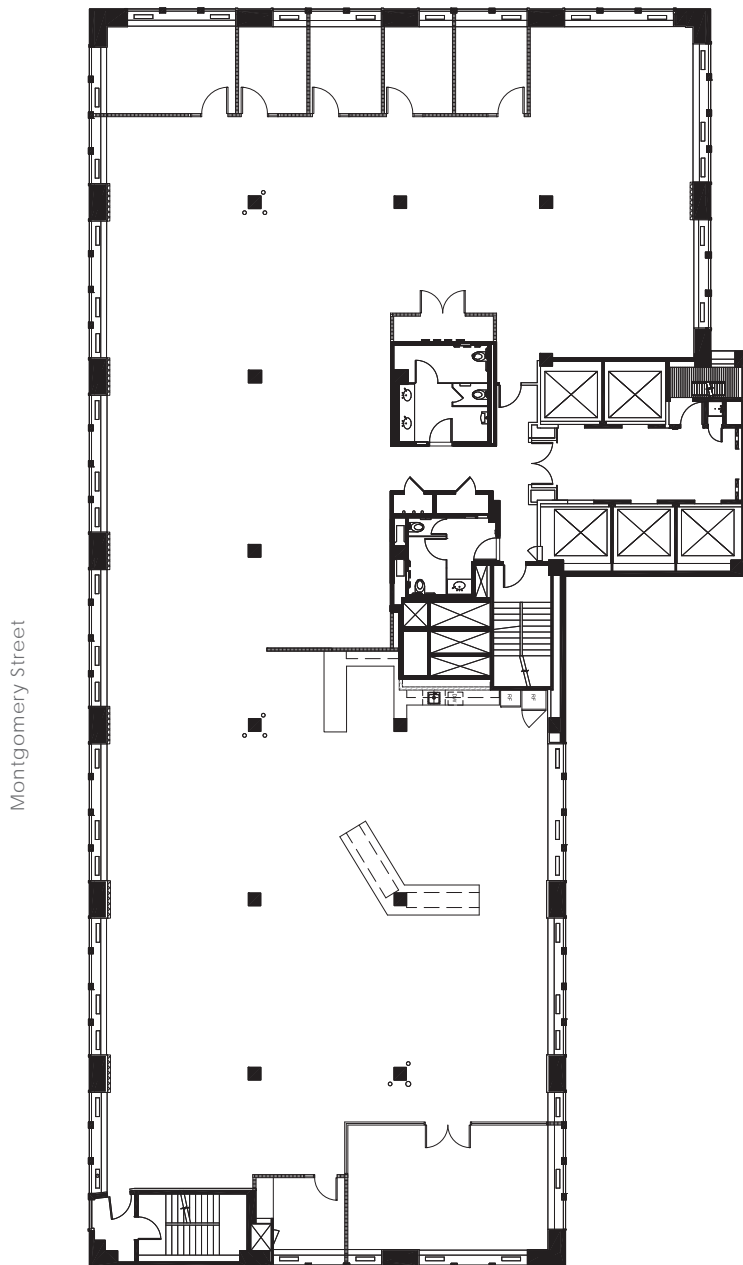
CUSHMAN &
WAKEFIELD



100
MONTGOMERY

Available Space Floor Plans

► SUITE 2500



Montgomery Street

- 12,012 RSF
- Available Q4 2020
- Full Floor Opportunity

[!\[\]\(ec9132f1d27c8919987d92907322654d_img.jpg\) **VIRTUAL TOUR**](#)

 **VANBARTON**
GROUP

 **CUSHMAN &
WAKEFIELD**



100
MONTGOMERY

Amenities

RESTAURANTS

- 1 — Proper Food
- 2 — Project Juice
- 3 — Moolicious-Sansome
- 4 — Per Diem
- 5 — Sam's Grill & Seafood
- 6 — Sushirrito
- 7 — Cafe Claude
- 8 — La Fusion
- 9 — The Plant Cafe Organic
- 10 — Gitane
- 11 — The Roots
- 12 — Ayola
- 13 — Yank Sing
- 14 — GINTO Izakaya Japonaise
- 15 — Super Duper Burger
- 16 — Boudin
- 17 — Sushirrito - SOMA
- 18 — The Pink Elephant
- 19 — Bouche French Bistro
- 20 — Illy Cafe

FITNESS

- 1 — 24 Hour Fitness
- 2 — Equinox

- BART
- /// MUNI - Metro
- Cable Car
- F Line (Streetcar)
- MUNI Bus 1, 5, 6, 9, 21, 38, 30x, 71

HOTELS

- 1 — Galleria Park Hotel
- 2 — Hotel Des Arts
- 3 — The Park Hotel
- 4 — Grand Hyatt
- 5 — Palace Hotel
- 6 — Four Seasons
- 7 — Hotel Zelos
- 8 — Omni San Francisco

BANKS

- 1 — Wells Fargo Bank
- 2 — City National Bank
- 3 — First Republic
- 4 — U.S. Bank

STORES

- 1 — Target
- 2 — Apple Store



VANBARTON
GROUP

CUSHMAN &
WAKEFIELD

FOR LEASING INFORMATION

Mark Anderson

Lic. #01325399

mark.anderson@cushwake.com

Tel: 415 773 3583

David Q. Duble

Lic. #00993334

david.duble@cushwake.com

Tel: 415 773 3568

 **VANBARTON**
GROUP

 **CUSHMAN &
WAKEFIELD**