

FOR LEASE

1444

N. MAIN STREET
WALNUT CREEK, CA

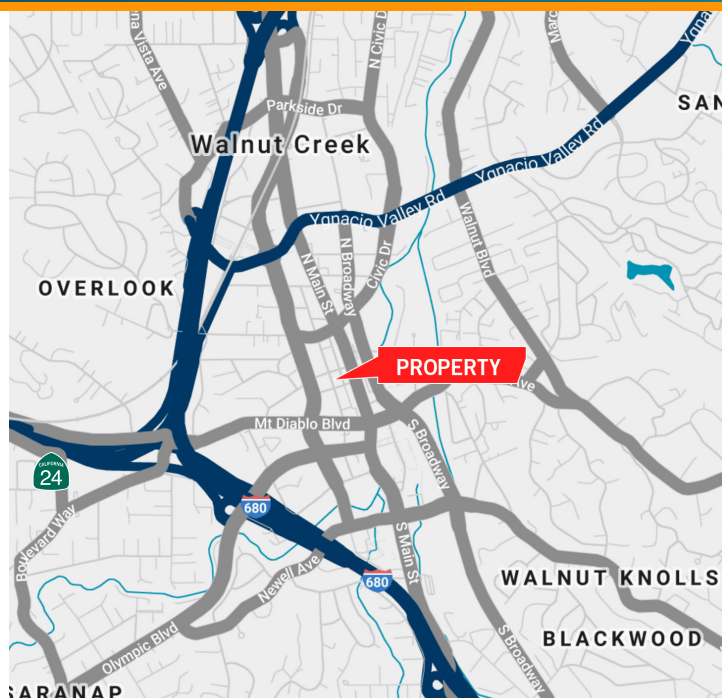


MAUZY EXECUTIVE SUITES

COWORKING SPACES OR 1,385 SF AVAILABLE

PROPERTY HIGHLIGHTS

- Second floor executive suite office spaces
- Located in the heart of downtown Walnut Creek
- Great freeway access to I-680 and I-24
- Easy access to Walnut Creek BART
- Close proximity to local shops and restaurants
- On-site parking



MITCH HERTZ
Executive Director
+1 925 274 2803
mitch.hertz@cushwake.com
Lic #01161729

JOSH HERTZ
Associate
+1 925 876 5743
josh.hertz@cushwake.com
Lic #02245870

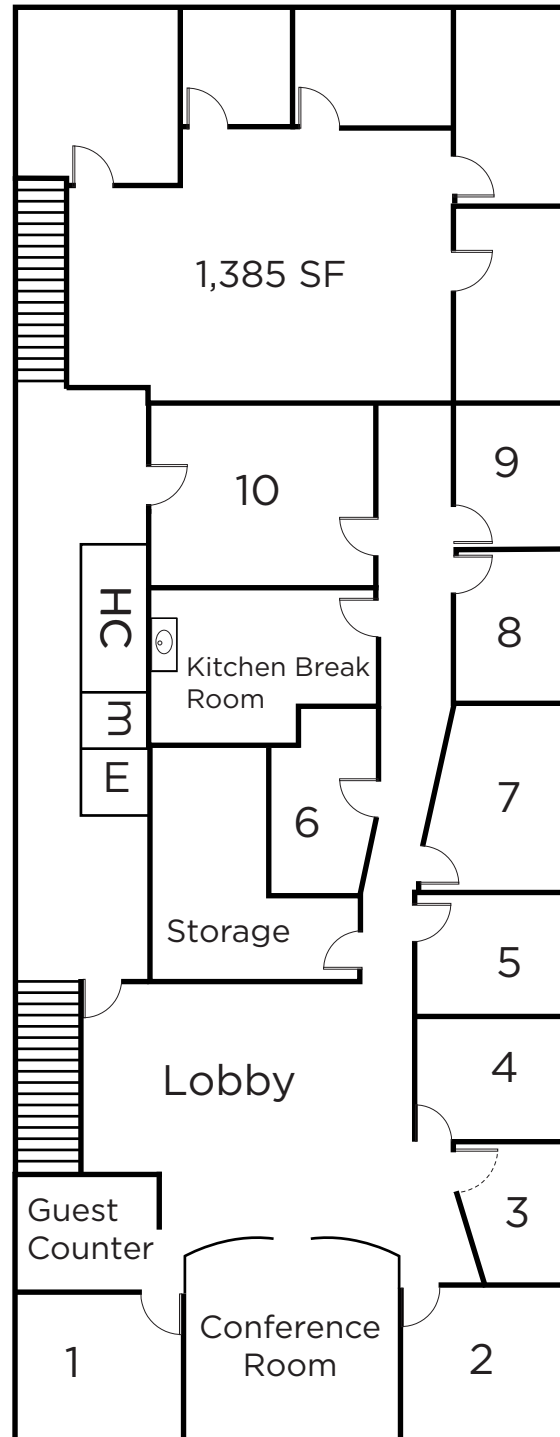
 CUSHMAN &
WAKEFIELD

FOR LEASE:

1444 N. MAIN STREET

COWORKING SPACES OR 1,385 SF AVAILABLE

SECOND FLOOR PLAN - MAUZY EXECUTIVE OFFICES



MITCH HERTZ
Executive Director
+1 925 274 2803
mitch.hertz@cushwake.com
Lic #01161729

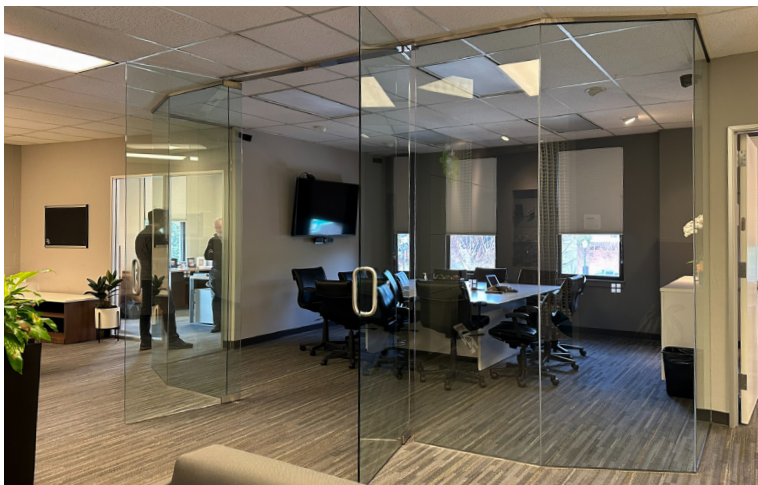
JOSH HERTZ
Associate
+1 925 876 5743
josh.hertz@cushwake.com
Lic #02245870

FOR LEASE:

1444 N. MAIN STREET

COWORKING SPACES OR 1,385 SF AVAILABLE

PHOTO GALLERY



MITCH HERTZ
Executive Director
+1 925 274 2803
mitch.hertz@cushwake.com
Lic #01161729

JOSH HERTZ
Associate
+1 925 876 5743
josh.hertz@cushwake.com
Lic #02245870

FOR LEASE:

1444 N. MAIN STREET

COWORKING SPACES OR 1,385 SF AVAILABLE

AMENITIES MAP



©2023 Cushman & Wakefield. All rights reserved. The information contained in this communication is strictly confidential. This information has been obtained from sources believed to be reliable but has not been verified. NO WARRANTY OR REPRESENTATION, EXPRESS OR IMPLIED, IS MADE AS TO THE CONDITION OF THE PROPERTY (OR PROPERTIES) REFERENCED HEREIN OR AS TO THE ACCURACY OR COMPLETENESS OF THE INFORMATION CONTAINED HEREIN, AND SAME IS SUBMITTED SUBJECT TO ERRORS, OMISSIONS, CHANGE OF PRICE, RENTAL OR OTHER CONDITIONS, WITHDRAWAL WITHOUT NOTICE, AND TO ANY SPECIAL LISTING CONDITIONS IMPOSED BY THE PROPERTY OWNER(S). ANY PROJECTIONS, OPINIONS OR ESTIMATES ARE SUBJECT TO UNCERTAINTY AND DO NOT SIGNIFY CURRENT OR FUTURE PROPERTY PERFORMANCE.

MITCH HERTZ
Executive Director
+1 925 274 2803
mitch.hertz@cushwake.com
Lic #01161729

JOSH HERTZ
Associate
+1 925 876 5743
josh.hertz@cushwake.com
Lic #02245870