

FIRST PLACE

2254 N. First Street: ±4,230 SF

2218 N. First Street: ±6,499 SF



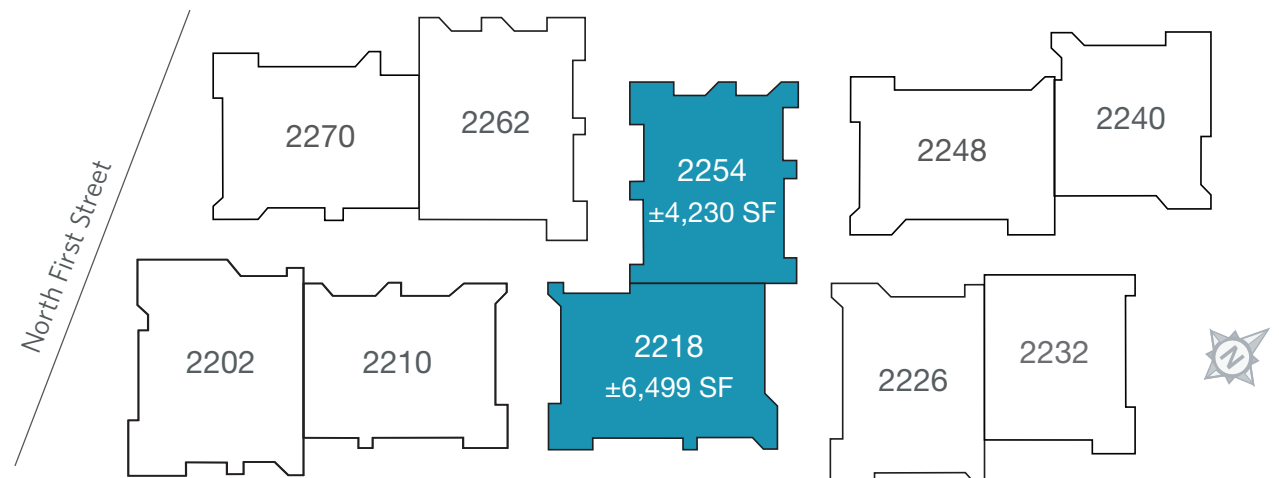
JON DECOITE
Managing Director
+1 408 615 3408
jon.decoite@cushwake.com
LIC #01471300

MIKE BAKER
Senior Director
+1 408 615 3406
mike.baker@cushwake.com
LIC #01884037



PROPERTY HIGHLIGHTS

- Free-standing Buildings
- Adjacent to VTA Light Rail Station
- Prominent Signage on North First Street Monument and Suite Entry
- Ample Parking Adjacent to Each Building
- No Load Factor or Restricted Building Hours - Suites Separately Metered
- Garden Setting with Outdoor Common Areas
- 4 Parking Spaces per 1,000 SF Leased
- Convenient Access to Highway 101 and Interstate 880

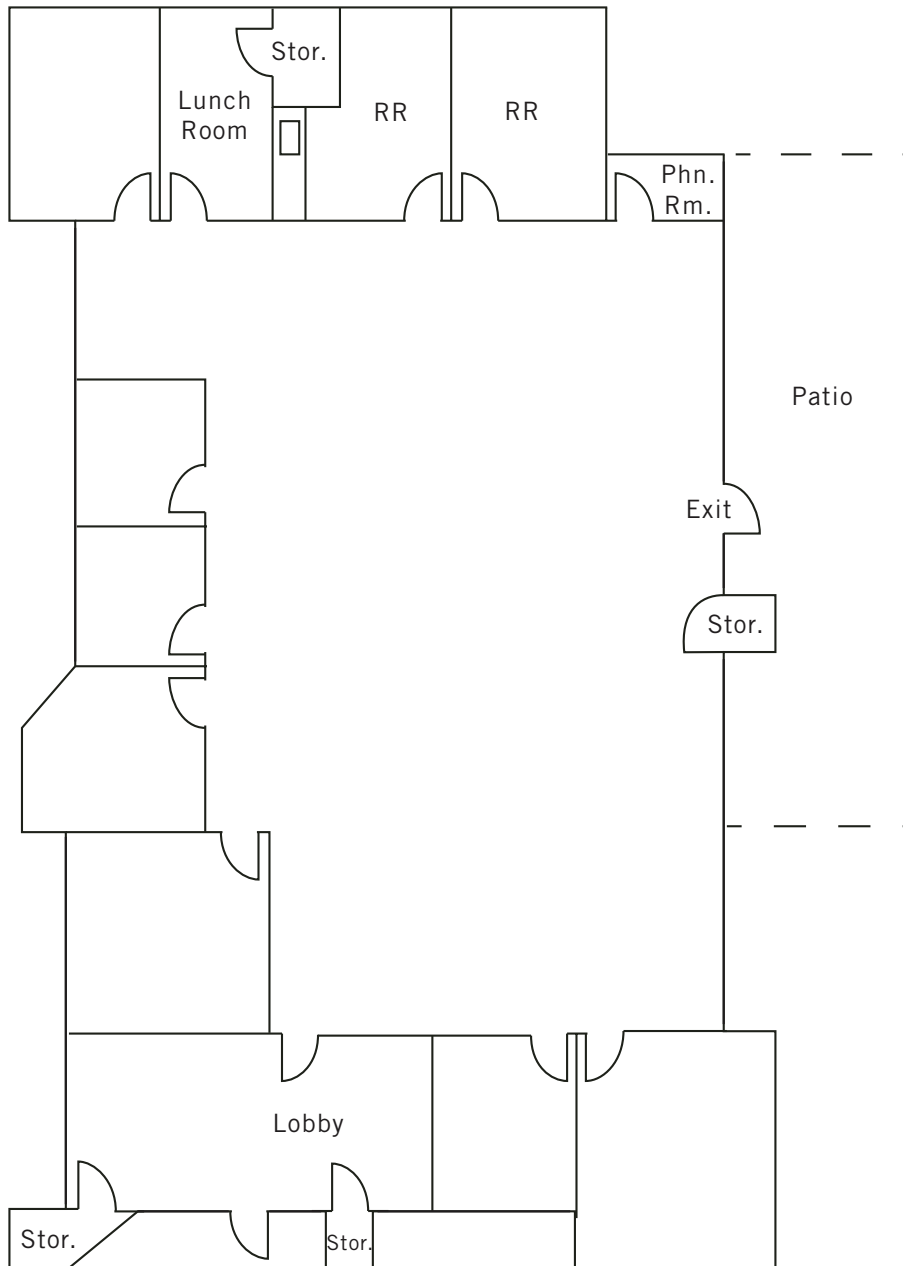


FIRST PLACE

2254 N. First Street, San Jose, CA

FLOOR PLAN

±4,230 SF - Available Now



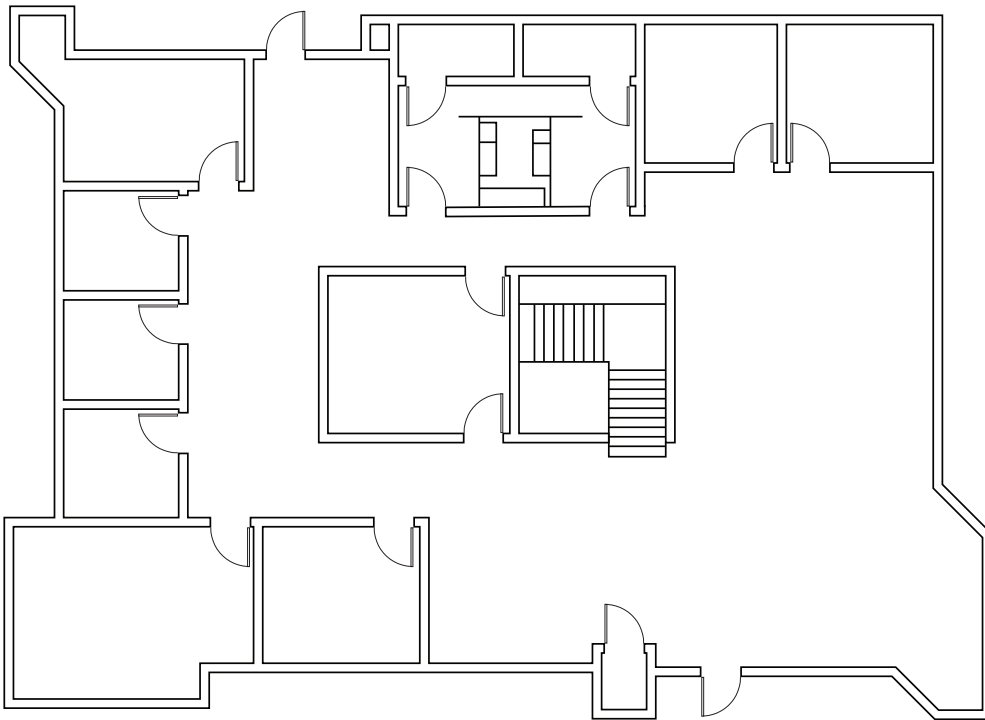
FIRST PLACE

2218 N. First Street, San Jose, CA

FLOOR PLAN

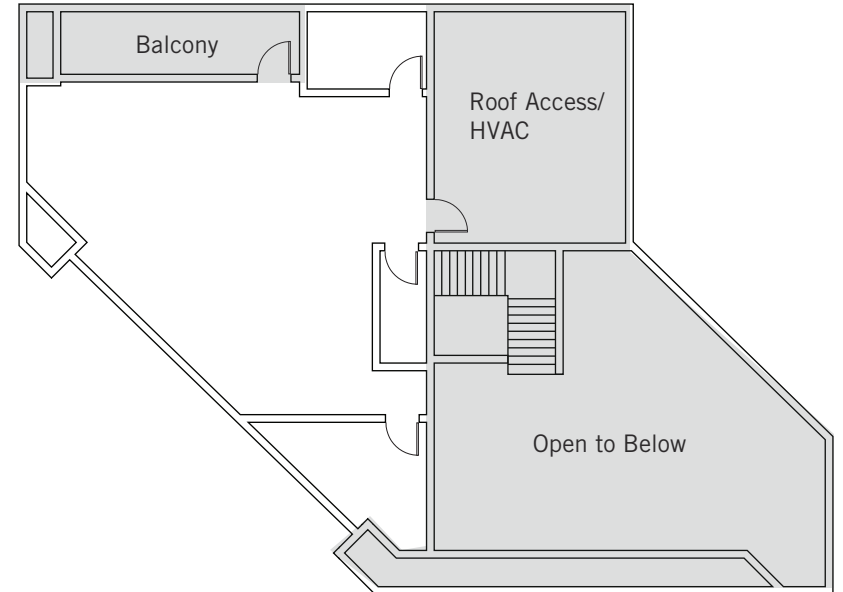
±6,499 SF - Available Now

First Floor



Entrance

Second Floor



FIRST PLACE

2254 N. First Street, San Jose

2218 N. First Street, San Jose

AERIAL

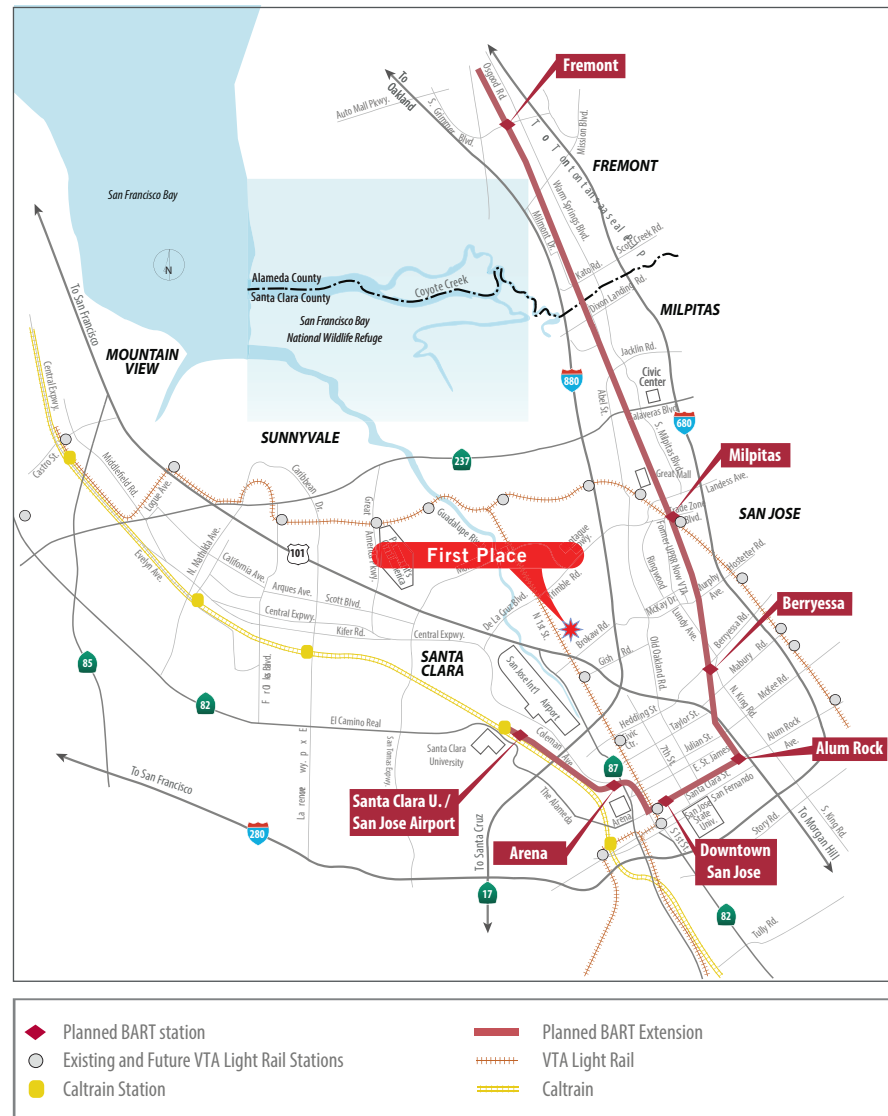


LOCATION:

First Place is located on the east side of North First Street, North of Brokaw and south of Charcot Avenue, approximately 1 mile east of Highway 101.

First Place is centrally located with easy access to Highways 101, 880 and 87.

TRANSPORTATION



FIRST PLACE

2254 N. First Street, San Jose

2218 N. First Street, San Jose

