

150

NORTECH PARKWAY
SAN JOSE, CA

150



VIEW VIDEO

±20,210 - ±40,420 SF FOR LEASE

OFFICE / LAB / MANUFACTURING / WAREHOUSE



DOLLINGER PROPERTIES



CUSHMAN &
WAKEFIELD

150 NORTECH PARKWAY | SAN JOSE, CA

PROPERTY HIGHLIGHTS

±20,210 - ±40,420 SF

- New High Image Clear Glass Entryway
- New Breakroom with Outdoor Seating
- New Private Offices & Conference Room with 9' Doors and 10' Ceilings
- New 100% HVAC
- New Open Area for Lab, Manufacturing & Warehouse Space



1,600 Amps
@ 480V Power



18' -20'
Clear Height



2 Dock Level &
2 Grade Level
Loading Doors



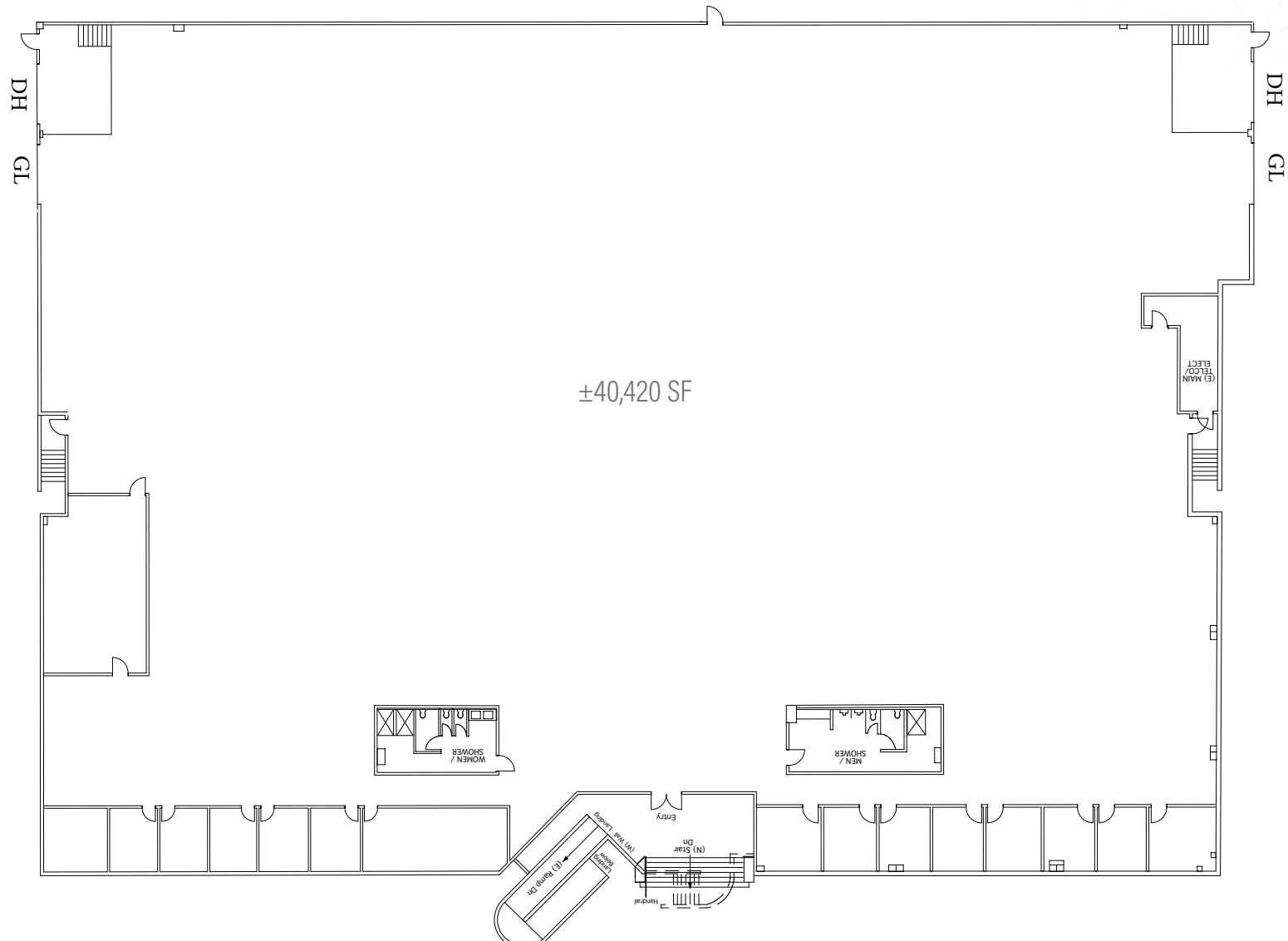
±3.5/1,000
Parking

PROPERTY LOCATION



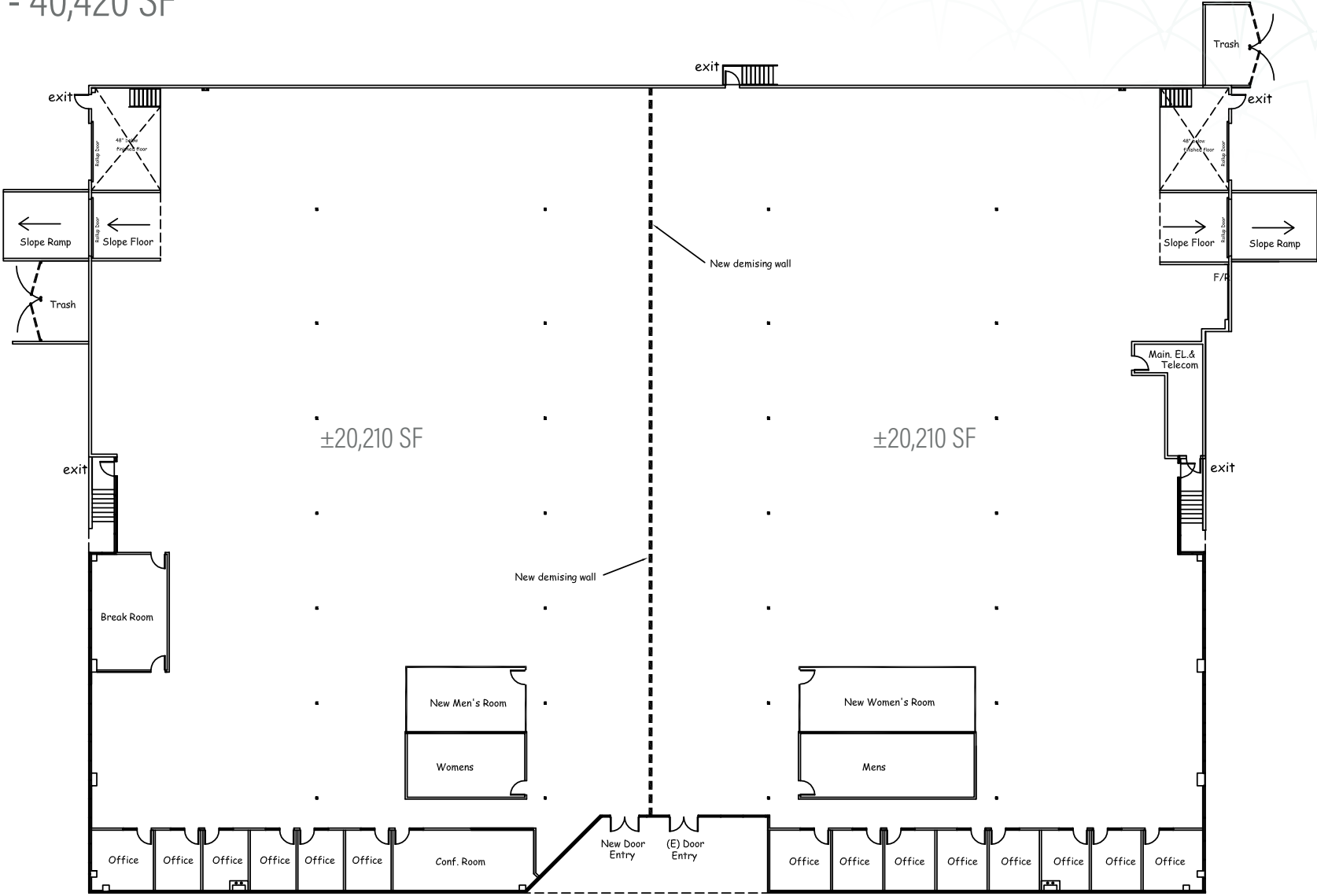
EXISTING FLOOR PLAN

±40,420 SF



HYPOTHETICAL DIVISIBLE FLOOR PLAN

±20,210 - 40,420 SF





NEARBY COMPANIES



TRANSPORTATION



13 Minute Drive to Milpitas Bart Station

15 Minutes on Light Rail from Tasman Station to Milpitas BART Station

10 Minutes on Light Rail from Tasman Station to ACE Train Santa Clara/Great America Station

150

NORTECH PARKWAY
SAN JOSE, CA



STEVE PACE

+1 408 482 7037

steve.pace@cushwake.com

Lic. #00817396

DAN HOLLINGSWORTH

+1 408 615 3431

dan.hollingsworth@cushwake.com

Lic. #01117716

TIANA DAMPIER

+1 408 436 3680

tiana.dampier@cushwake.com

Lic. #02191012

300 Santana Row, Fifth Floor

San Jose, CA 95128

+1 408 615 3400

cushmanwakefield.com