

370

PARK AVENUE SOUTH

NOMAD
NORTHWEST CORNER OF 26TH STREET
51MADISONAVE.COM

CORNER RETAIL FLAGSHIP
AT THE BASE OF THE HISTORIC
NEW YORK LIFE BUILDING



EXCLUSIVE LEASING AGENT:

CUSHMAN & WAKEFIELD

370

PARK AVENUE SOUTH

GROUND 8,264 SF
LOWER LEVEL 4,559 SF
TOTAL 12,823 SF

70' FRONTAGE
PARK AVENUE SOUTH

130' FRONTAGE
26TH STREET

< 26TH STREET

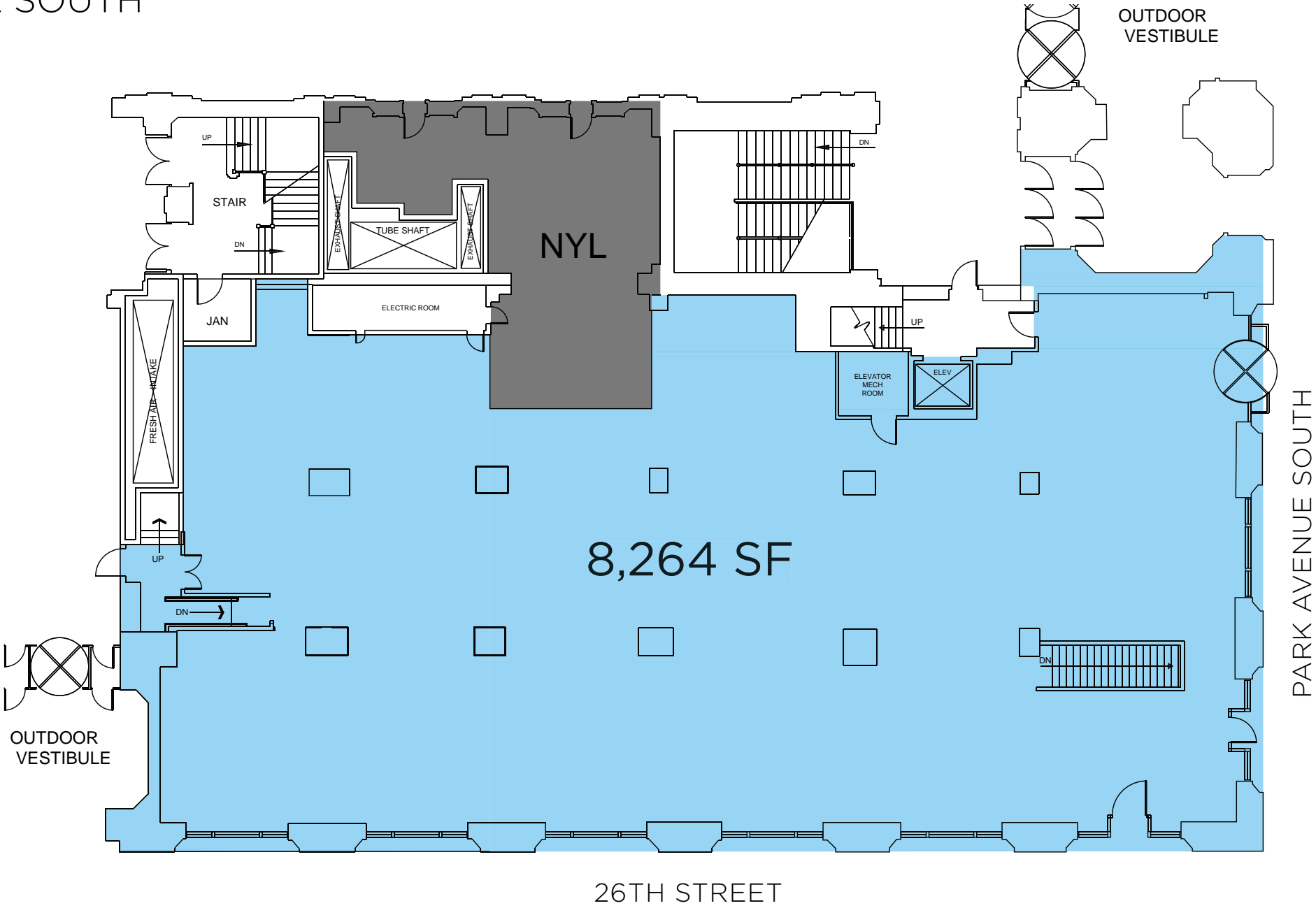
PARK AVENUE SOUTH >

• Divisions considered • Direct access to 6 Subway train in Lobby • Space can be vented **POSSESSION** Immediate **RENT** Upon Request

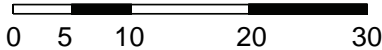
370

PARK AVENUE SOUTH

GROUND FLOOR



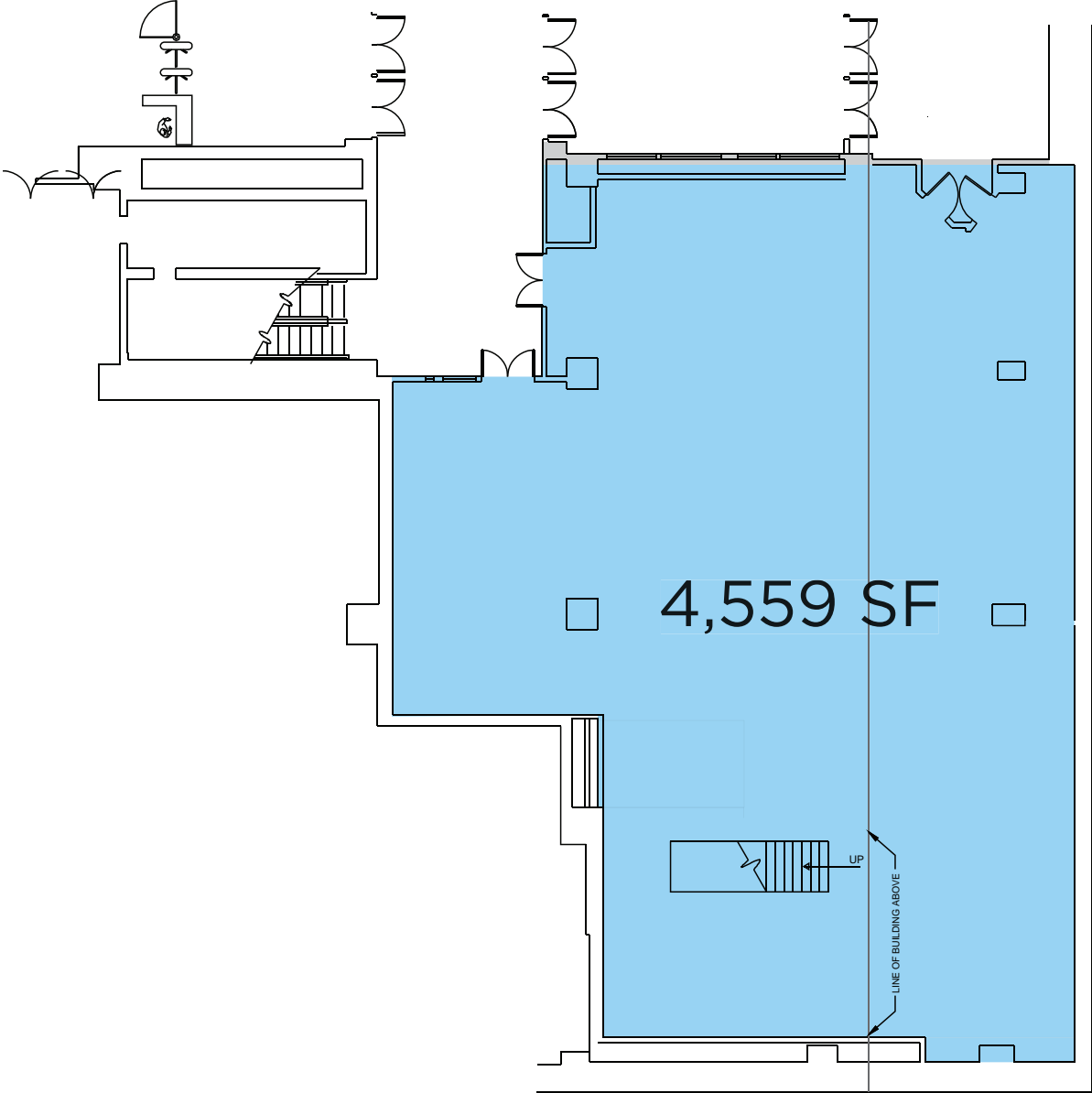
EXCLUSIVE LEASING AGENT:



370

PARK AVENUE SOUTH

LOWER LEVEL



370

PARK AVENUE SOUTH

NEIGHBORHOOD RETAILERS



EXCLUSIVE LEASING AGENT:



370

PARK AVENUE SOUTH

51MADISONAVE.COM

EXCLUSIVE LEASING AGENT:



**CUSHMAN &
WAKEFIELD**

ANDREW KAHN

+1 212.841.7732

andrew.kahn@cushwake.com

MATT WEINREB

+1 212.841.5068

matt.weinreb@cushwake.com

www.CushmanWakefield.com