

6,015 SF RETAIL SPACE

213
PAS

PARK AVENUE SOUTH

BETWEEN 17TH & 18TH STREETS

W UNION SQUARE

EXCLUSIVE LEASING AGENT

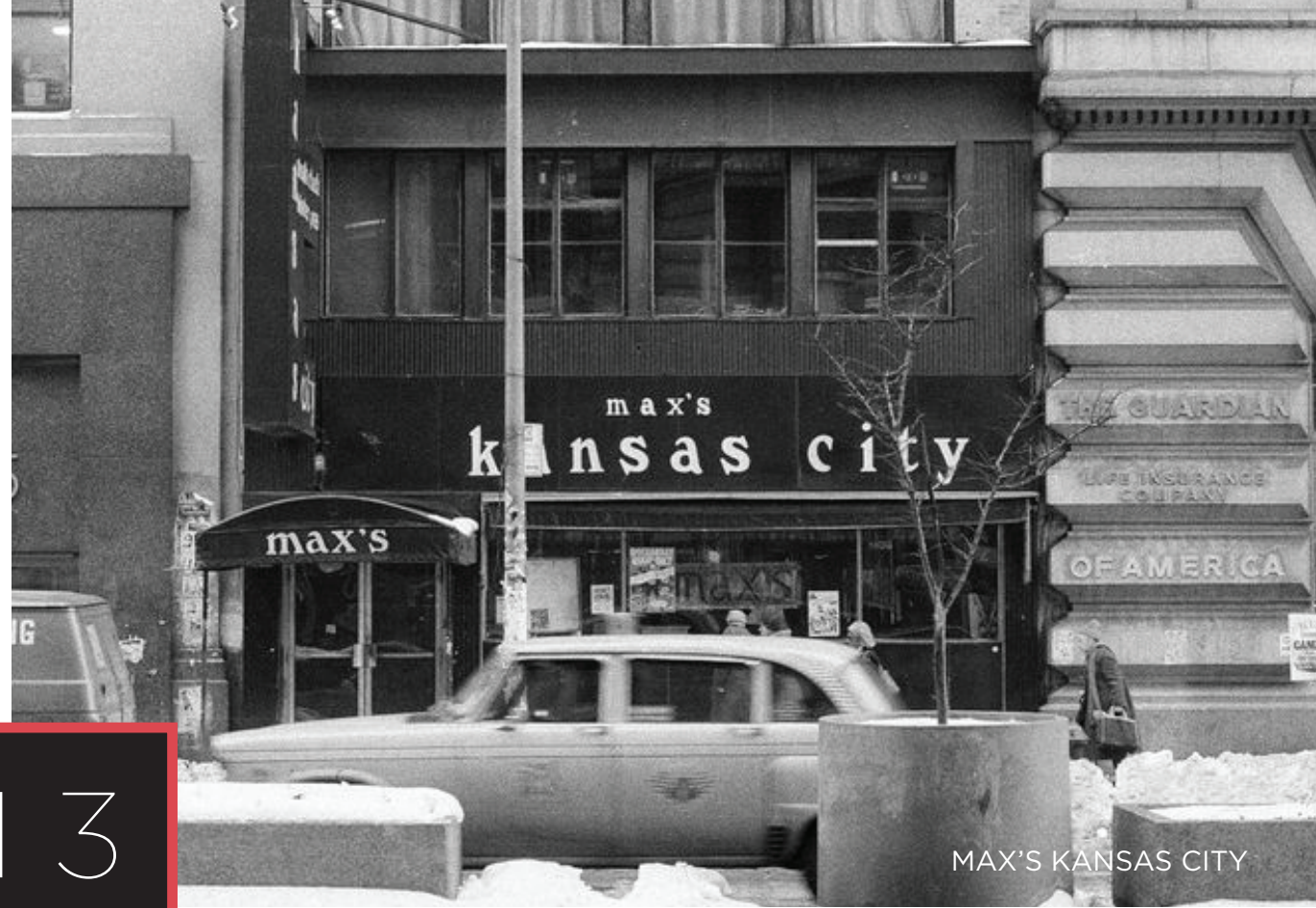


CUSHMAN &
WAKEFIELD



EXISTING

213
PAS



MAX'S KANSAS CITY

RETAIL SPACE AVAILABLE

GROUND 2,700 SF

MEZZ 915 SF*

LOWER 2,400 SF

**Mezzanine could increase to include entire second floor: 2,700 SF total*

FRONTAGE 18' PARK AVENUE SOUTH

POSSESSION ARRANGED

COMMENTS

- Second generation F&B retail space
- Currently existing venting on the ground floor, as well as a full kitchen in the lower level
- Potential to include entire 2nd floor featuring a double height entry
- Originally home to Max's Kansas City, one of New York's most famous nightclubs
- Two blocks from the 4,5,6,L,N,Q,R subway lines, with over 35M annual riders
- Steps from Union Square Park and the Union Square Greenmarket

NQR
456
L

UNION SQUARE

W
HOTEL

30M+
ANNUAL RIDERSHIP

NORDSTROM
rack IRVING PLAZA | NYC

213
PAS

BARNES & NOBLE

UNION SQUARE
GREEN MARKET

UNION SQUARE
HOLIDAY MARKET

DARYL ROTH
THEATER



213
PAS

MORE THAN
75K RESIDENTS
140K EMPLOYEES
60K STUDENTS &
MILLIONS OF TOURISTS
VISIT UNION SQUARE ANNUALLY



GROUND 2,700 SF
MEZZ 915 SF *
LOWER 2,400 SF
TOTAL 6,015 SF

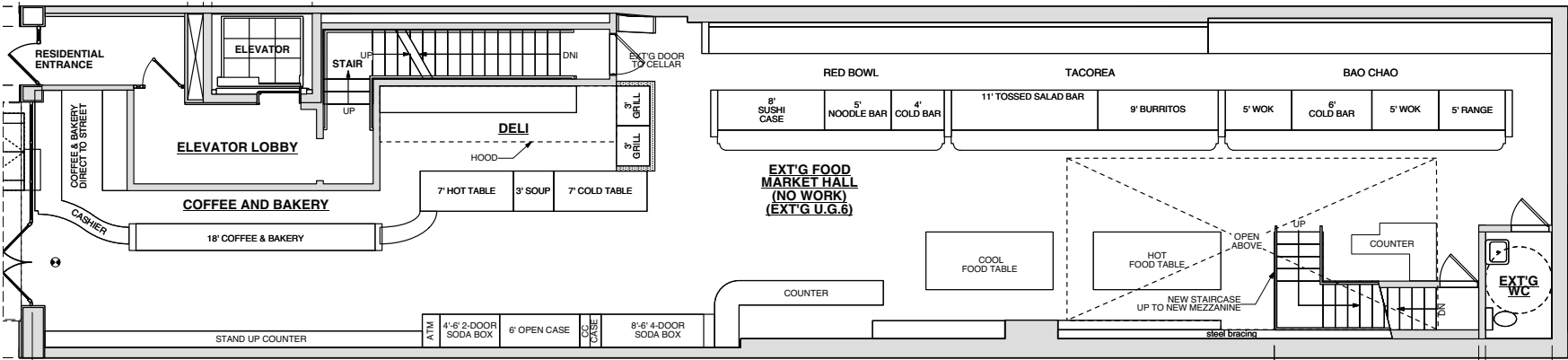
18' FRONTAGE



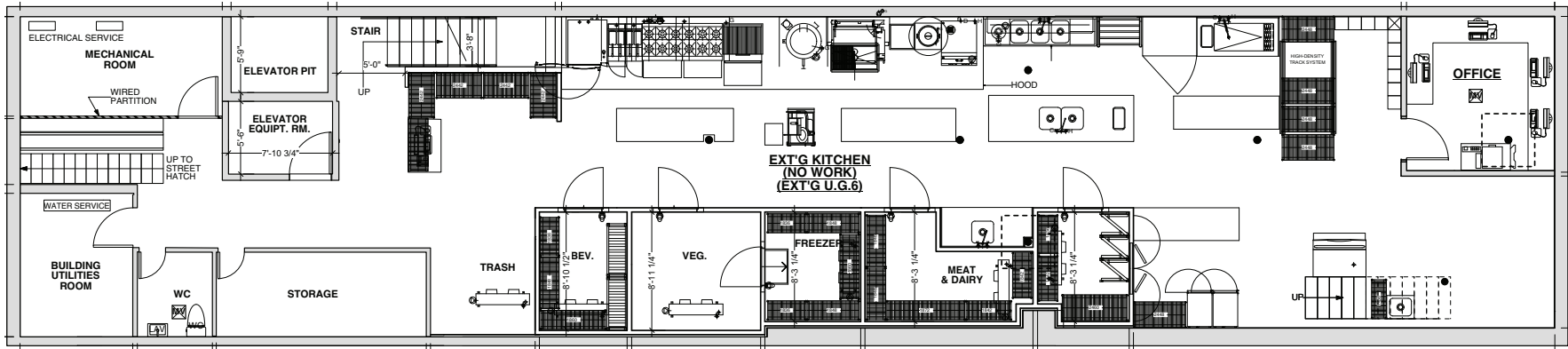
*POSSIBLE EXTENSION TO 2,700 SF

MEZZANINE

18 FEET
PARK AVENUE SOUTH



GROUND



LOWER



MICHAEL AZARIAN
+1 212 841-7831
MICHAEL.AZARIAN@CUSHWAKE.COM

JAMES ARIOLA
+1 212 698-2572
JAMES.ARIOLA@CUSHWAKE.COM

WWW.CUSHMANWAKEFIELD.COM

EXCLUSIVE LEASING AGENT:

