

19

W. 44TH STREET

OPTICIANS

COMBO
SPRINKLER

SAVANNA

CUSHMAN &
WAKEFIELD

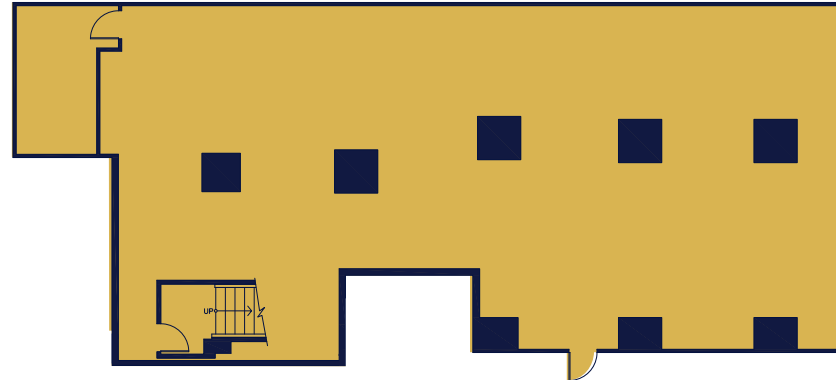
GROUND

3,315 SF



LOWER LEVEL

3,011 SF



SIZE

Ground:	3,315 SF
Lower Level:	3,011 SF
Total:	6,326 SF

FRONTAGE

20'

CEILING HEIGHT

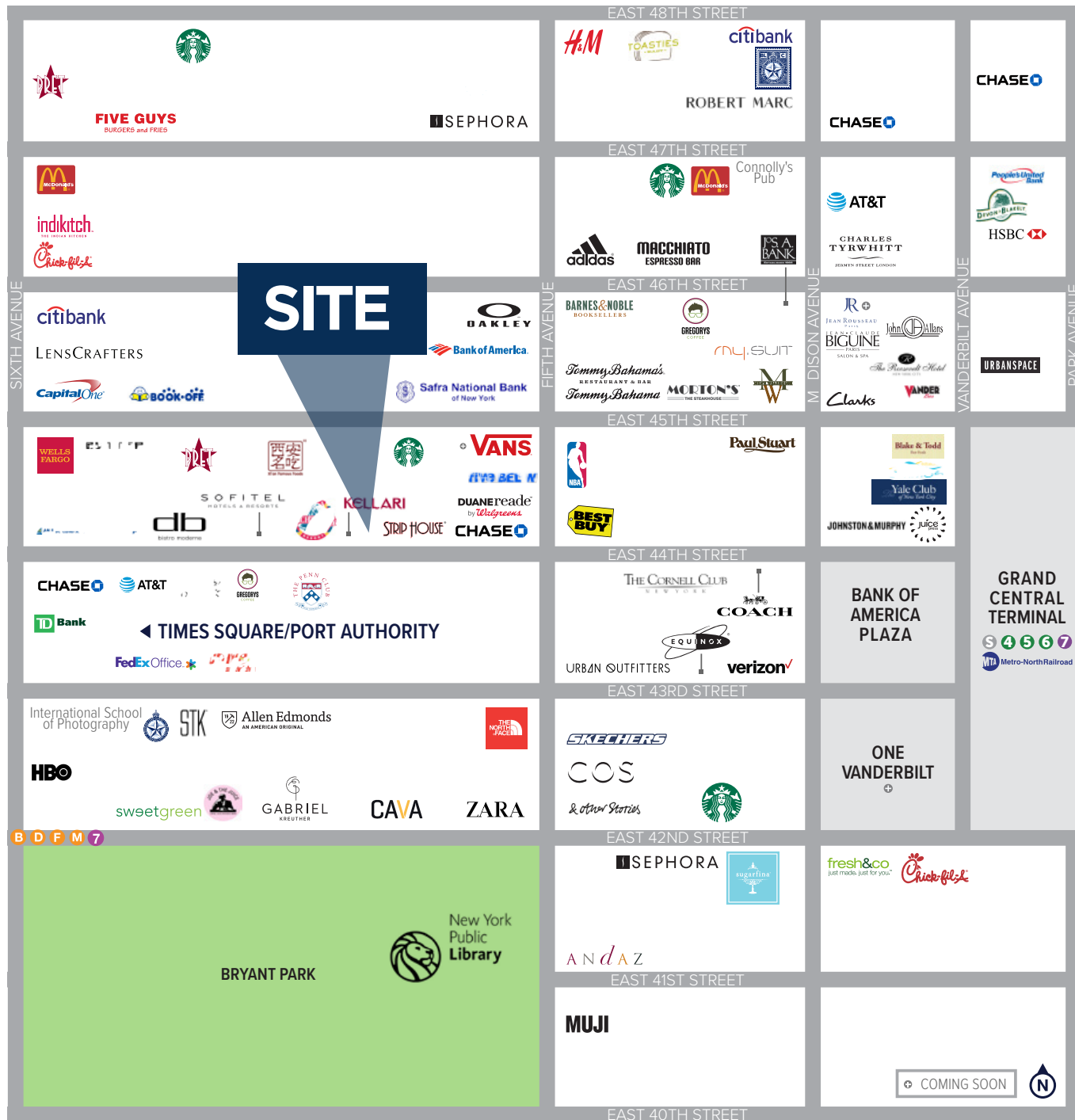
Ground:	16'
Lower Level:	12'

POSSESSION

Immediate

COMMENTS

- Rare restaurant opportunity on Midtown's Club Row
- At the base of a 303,000-SF LEED Silver Certified office tower
- Great co-tenancy by neighboring fine-dining establishments, private social clubs and hotels
- All uses considered
- Usable Lower Level
- Venting possible through black-iron or precipitator



STEVEN SOUTENDIJK
(212) 713-6845
STEVEN.SOUTENDIJK@CUSHWAKE.COM

SEAN MORAN
(212) 841-7668
SEAN.MORAN@CUSHWAKE.COM

PATRICK O'ROURKE
(212) 660-7777
PATRICK.OROURKE@CUSHWAKE.COM

SAVANNA  **CUSHMAN & WAKEFIELD**

©2021 CUSHMAN & WAKEFIELD. ALL RIGHTS RESERVED. THE INFORMATION CONTAINED IN THIS COMMUNICATION IS STRICTLY CONFIDENTIAL. THIS INFORMATION HAS BEEN OBTAINED FROM SOURCES BELIEVED TO BE RELIABLE BUT HAS NOT BEEN VERIFIED. NO WARRANTY OR REPRESENTATION, EXPRESS OR IMPLIED, IS MADE AS TO THE CONDITION OF THE PROPERTY (OR PROPERTIES) REFERENCED HEREIN OR AS TO THE ACCURACY OR COMPLETENESS OF THE INFORMATION CONTAINED HEREIN, AND SAME IS SUBMITTED SUBJECT TO ERRORS, OMISSIONS, CHANGE OF PRICE, RENTAL OR OTHER CONDITIONS, WITHDRAWAL WITHOUT NOTICE, AND TO ANY SPECIAL LISTING CONDITIONS IMPOSED BY THE PROPERTY OWNER(S). ANY PROJECTIONS, OPINIONS OR ESTIMATES ARE SUBJECT TO UNCERTAINTY AND DO NOT SIGNIFY CURRENT OR FUTURE PROPERTY PERFORMANCE.