



CENTERPOINTE

at Natomas Crossing | 2290 Del Paso Road, Sacramento, CA

2290 DEL PASO ROAD

CENTERPOINTE AT NATOMAS CROSSING

Available for Lease: ±10,000 SF - ±25,000 SF

Property Highlights

- Ideal location at the intersection of Truxel Road and Del Paso Road
- Close proximity to retail amenities / restaurants
- Directly across the street from Raley's Center
- Desirable new construction and attractive landscaping
- Immediate access to Interstate 80 and Interstate 5
- Anchor tenants include: Guild Mortgage Company, Lyon Real Estate, and Placer Title Company



FUTURE DEVELOPMENTS UP TO ±135,000 SF



• FOOD •

- 1) Peet's Coffee & tea
- 2) Jack's Urban Eats
- 3) Jamba Juice
- 4) Freebirds World Burrito
- 5) Corner Bakery Cafe
- 6) Curry Corner
- 7) Bella Bru Cafe
- 8) Tuk Tuk Thai Cuisine
- 9) Panera Bread
- 10) Pete's Restaurant and Brewhouse
- 11) Tapioca Express
- 12) Beach Hut Deli
- 13) Buffalo Wild Wings

• HEALTH & WELLNESS •

- 1) Fitness Evolution
- 2) Anytime Fitness
- 3) CA Family Fitness
- 4) Curves
- 5) Bikram Yoga Natomas
- 6) Orangetheory Fitness

• HOTELS •

- 1) Homewood Suites by Hilton
- 2) Hampton Inn & Suites
- 3) Holiday Inn Express & Suites
- 4) Extended Stay America

• OTHER •

- 1) Raleys
- 2) Safeway
- 3) Natomas Veterinary Hospital
- 4) Cost Plus World Market
- 5) BevMo
- 6) Best Buy
- 7) Target
- 8) FedEx

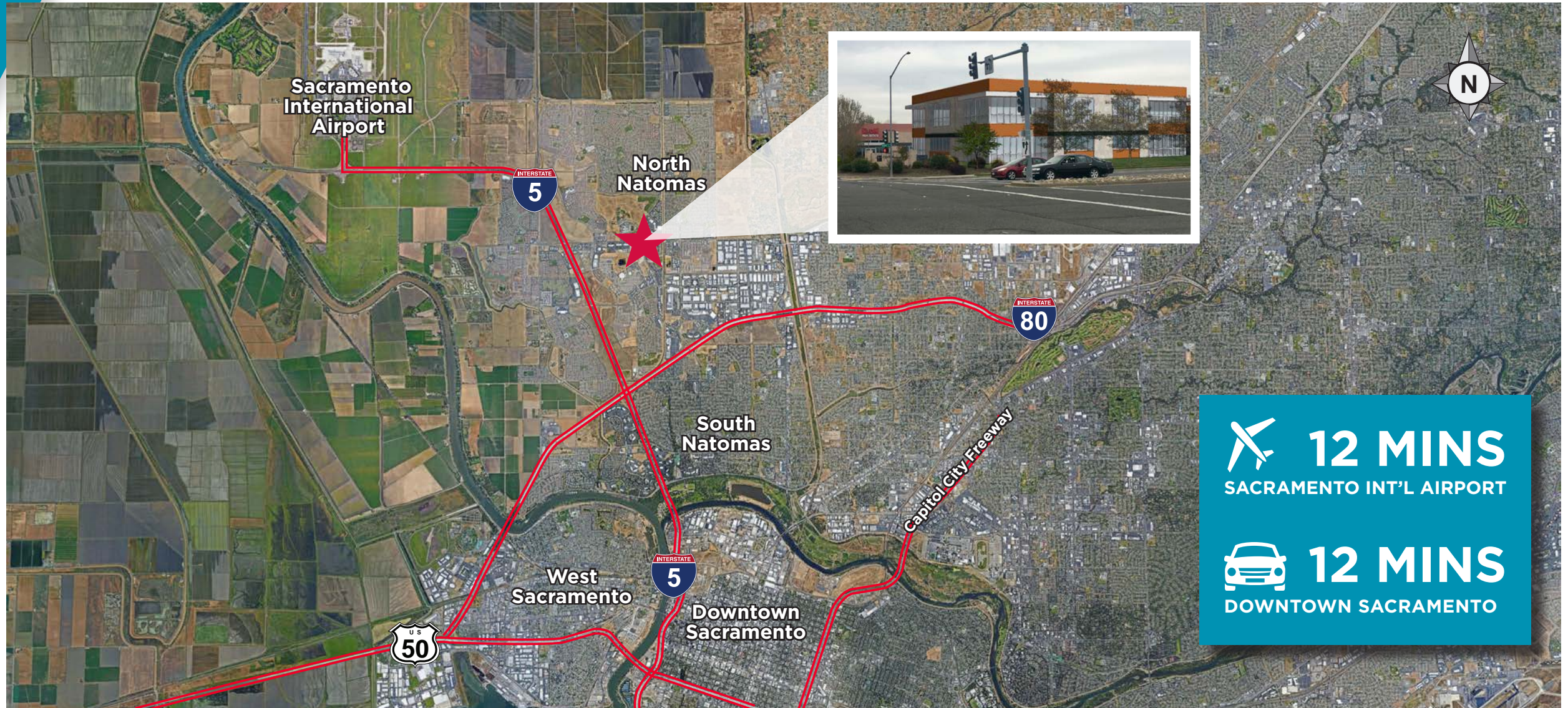
• GAS STATIONS •

- 1) Shell
- 2) Chevron
- 3) Safeway

DOWNTOWN SACRAMENTO • GOLDEN 1 CENTER • RAILYARDS • RALEY FIELD • SLEEP TRAIN ARENA • SAC INTERNATIONAL AIRPORT • SPINE BIKE TRAIL •

2290 DEL PASO ROAD

CENTERPOINTE AT NATOMAS CROSSING



CHAD COOK, SIOR, CCIM / Senior Director / chad.cook@cushwake.com / +1 916 329 1562
ZACH MOSLE, CCIM / Senior Associate / zach.mosle@cushwake.com / +1 916 329 1543

©2020 Cushman & Wakefield. All rights reserved. The information contained in this communication is strictly confidential. This information has been obtained from sources believed to be reliable but has not been verified. No warranty or representation, express or implied, is made as to the condition of the property (or properties) referenced herein or as to the accuracy or completeness of the information contained herein, and same is submitted subject to errors, omissions, change of price, rental or other conditions, withdrawal without notice, and to any special listing conditions imposed by the property owner(s). Any projections, opinions or estimates are subject to uncertainty and do not signify current or future property performance.