

801

BREWSTER AVENUE

REDWOOD CITY, CA

±1,370 TO ±11,902 SF AVAILABLE
DOWNTOWN REDWOOD CITY CREATIVE TECH
& MEDICAL SPACE AVAILABLE
(±5.0/1,000 PARKING)

FRED EDER
+1 408 489 2263
fred.eder@cushwake.com
LIC #00949342



801

BREWSTER AVENUE

Fuller Street

Warren Street

Arguello Street



Brewster Avenue

DOWNTOWN REDWOOD CITY CREATIVE TECH AND MEDICAL SPACE

AVAILABLE SPACES: ±1,370 TO ±11,902 SF

- Suite 100: ±6,633 SF (Shell - See Hypothetical Floor Plan)
- Suite 210: ±1,370 SF (4 Exam/Private Offices, Reception, Lunchroom & Private Restroom)
- Suite 250: ±1,582 SF* (4 Exam/Private Reception & Lunchroom)
- Suite 270: ±2,317 SF* (Market Ready Open Floor Plan, Lunchroom & Private Restroom)

PROPERTY HIGHLIGHTS:

- Two Entrances for Each Suite
- Additional Spaces Available with Notice
- ±5.0/1,000 Parking (2 Separate Parking Areas)
- Extensive Window Line
- Walking Distance to  &  Redwood City Transit Station
- ±80 Downtown Restaurants/Food Nearby

** Suite 250 and 270 can be combined for ±3,899 SF*

FRED EDER

+1 408 489 2263

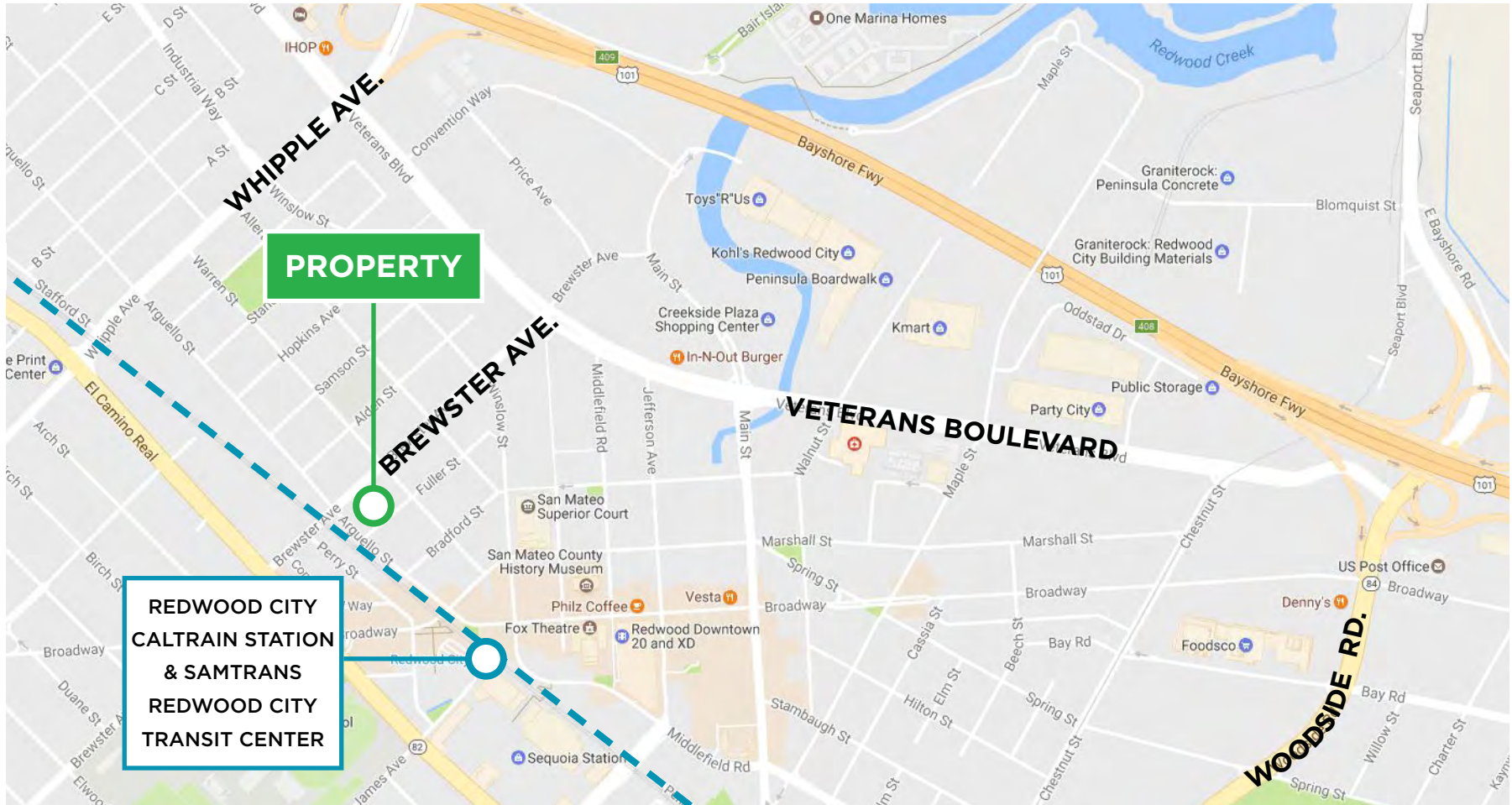
fred.eder@cushwake.com

LIC #00949342

2025 No warranty or representation, express or implied, is made to the accuracy or completeness of the information contained herein, and same is submitted subject to errors, omissions, change of price, rental or other conditions, withdrawal without notice, and to any special listing conditions imposed by the property owner(s). As applicable, we make no representation as to the condition of the property (or properties) in question.

LOCAL MAP

801 BREWSTER AVENUE



FRED EDER

+1 408 489 2263

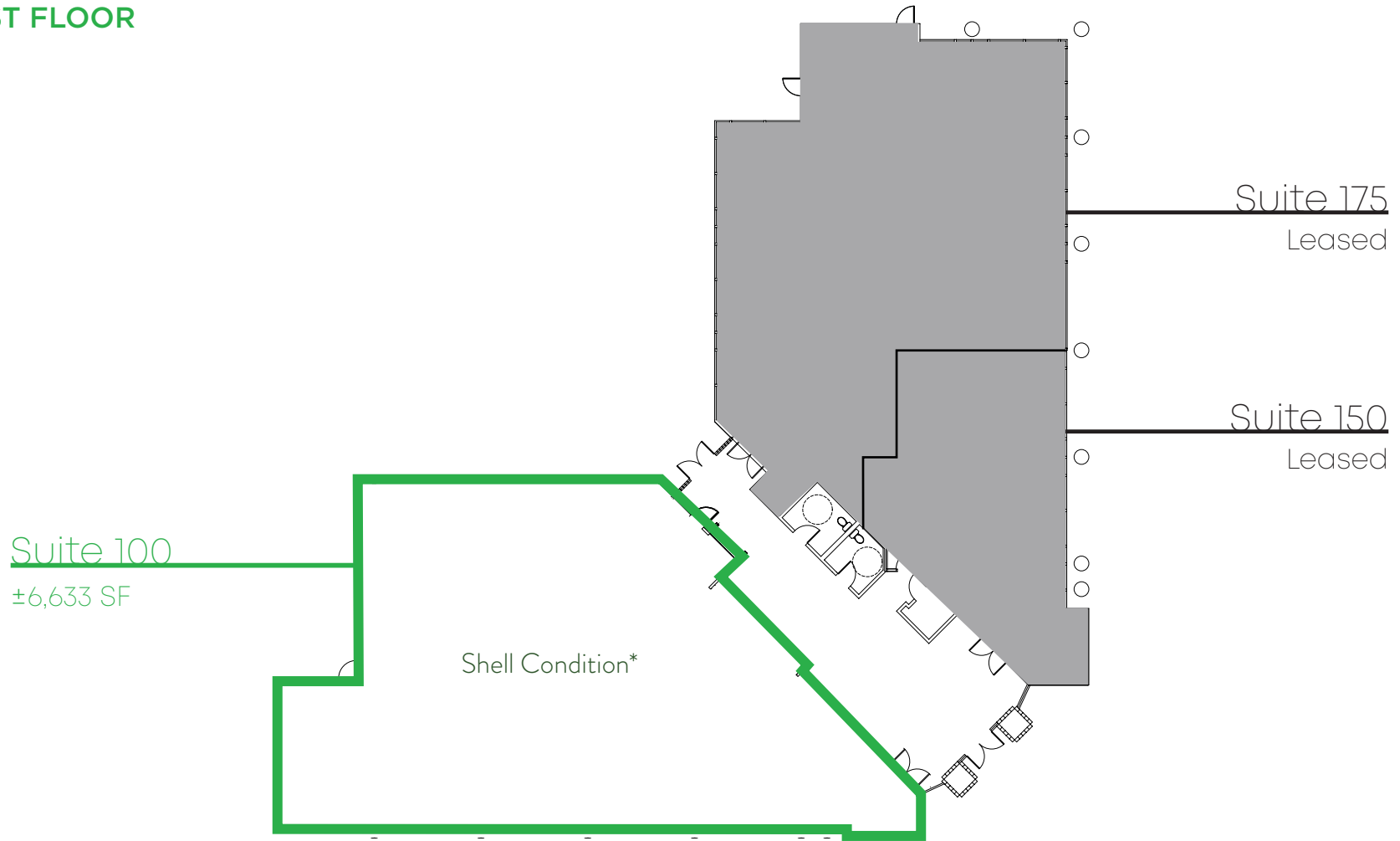
fred.eder@cushwake.com

LIC #00949342

2025 No warranty or representation, express or implied, is made to the accuracy or completeness of the information contained herein, and same is submitted subject to errors, omissions, change of price, rental or other conditions, withdrawal without notice, and to any special listing conditions imposed by the property owner(s). As applicable, we make no representation as to the condition of the property (or properties) in question.

FLOOR PLAN

FIRST FLOOR



*See Hypothetical Floor Plan on Next Page

Not to Scale

FRED EDER

+1 408 489 2263

fred.eder@cushwake.com

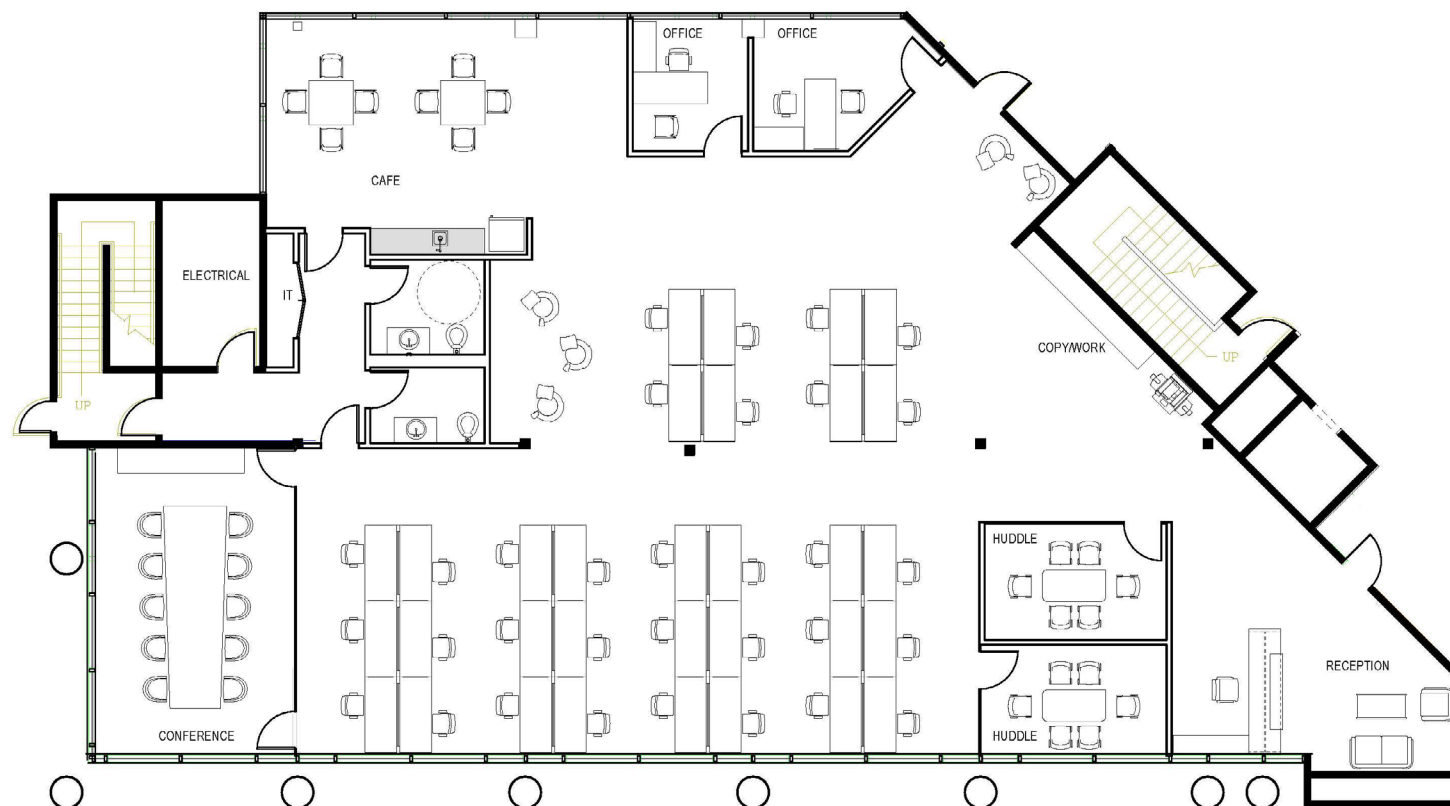
LIC #00949342

2025 No warranty or representation, express or implied, is made to the accuracy or completeness of the information contained herein, and same is submitted subject to errors, omissions, change of price, rental or other conditions, withdrawal without notice, and to any special listing conditions imposed by the property owner(s). As applicable, we make no representation as to the condition of the property (or properties) in question.

FLOOR PLAN

SUITE 100: ±6,633 SF

HYPOTHETICAL LAYOUT - DESIGN YOUR SPACE



Not to Scale

FRED EDER

+1 408 489 2263

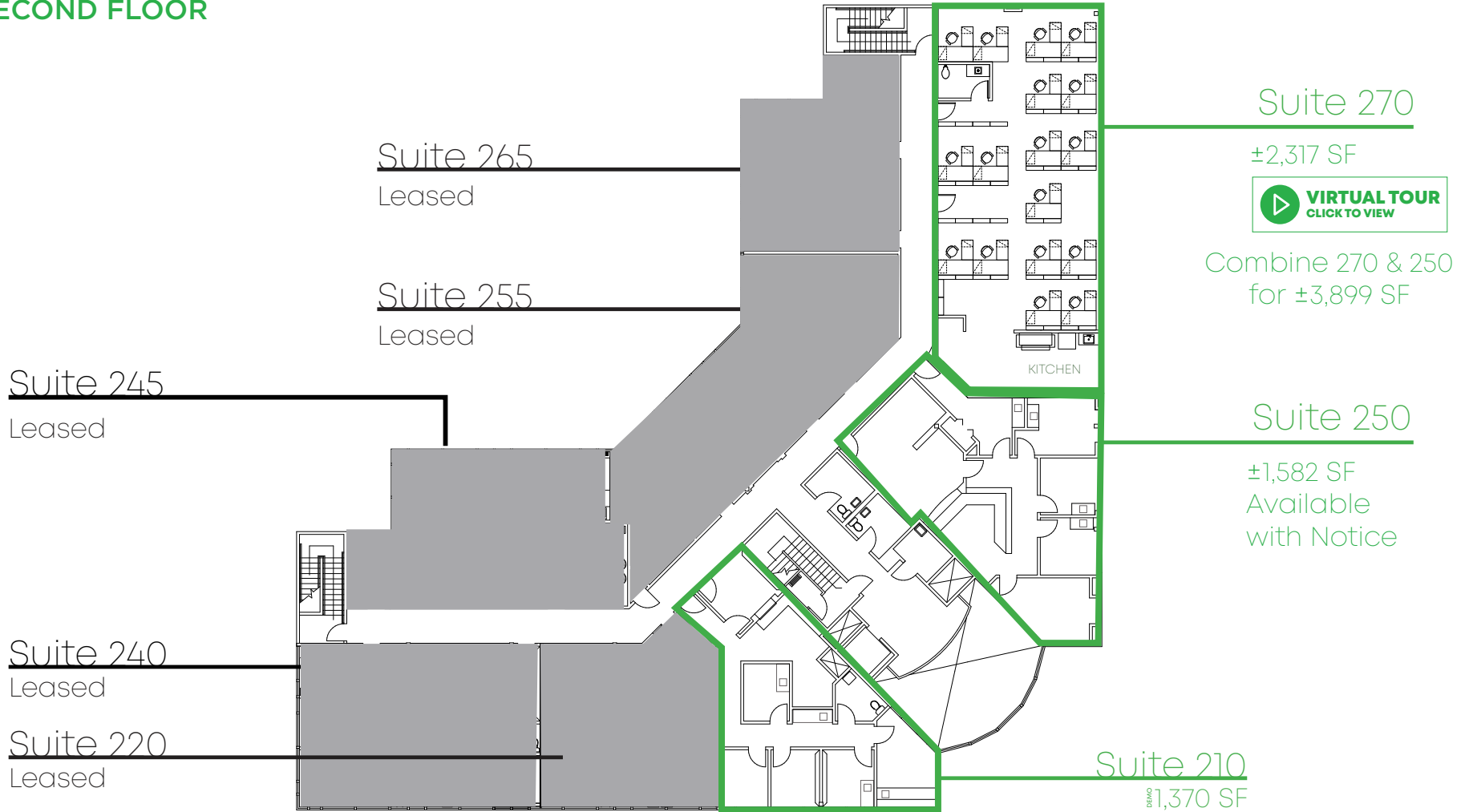
fred.eder@cushwake.com

LIC #00949342

2025 No warranty or representation, express or implied, is made to the accuracy or completeness of the information contained herein, and same is submitted subject to errors, omissions, change of price, rental or other conditions, withdrawal without notice, and to any special listing conditions imposed by the property owner(s). As applicable, we make no representation as to the condition of the property (or properties) in question.

FLOOR PLAN

SECOND FLOOR



Not to Scale

FRED EDER

+1 408 489 2263

fred.eder@cushwake.com

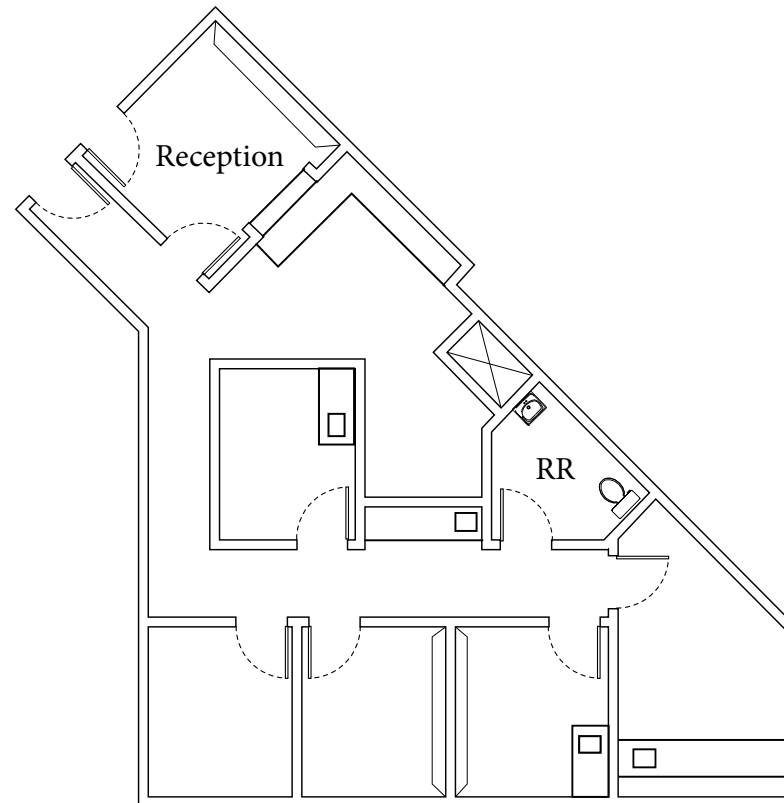
LIC #00949342

2025 No warranty or representation, express or implied, is made to the accuracy or completeness of the information contained herein, and same is submitted subject to errors, omissions, change of price, rental or other conditions, withdrawal without notice, and to any special listing conditions imposed by the property owner(s). As applicable, we make no representation as to the condition of the property (or properties) in question.

FLOOR PLAN

SUITE 210: ±1,370 SF

- 4 Exam/Private Offices
- Reception
- Lunchroom
- Private Restroom



Not to Scale

FRED EDER

+1 408 489 2263

fred.eder@cushwake.com

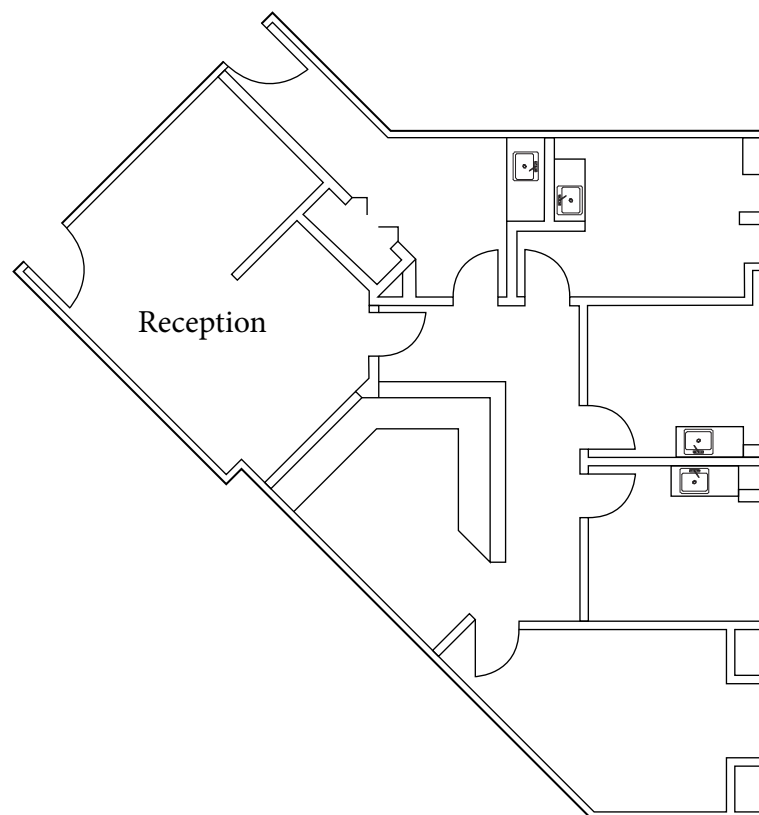
LIC #00949342

2025 No warranty or representation, express or implied, is made to the accuracy or completeness of the information contained herein, and same is submitted subject to errors, omissions, change of price, rental or other conditions, withdrawal without notice, and to any special listing conditions imposed by the property owner(s). As applicable, we make no representation as to the condition of the property (or properties) in question.

FLOOR PLAN

SUITE 250: ±1,582 SF

- 4 Exam/Private Offices
- Reception
- Lunchroom
- Available with Notice



Can Combine with Suite 270 for a Total of ±3,899 SF

Not to Scale

FRED EDER

+1 408 489 2263

fred.eder@cushwake.com

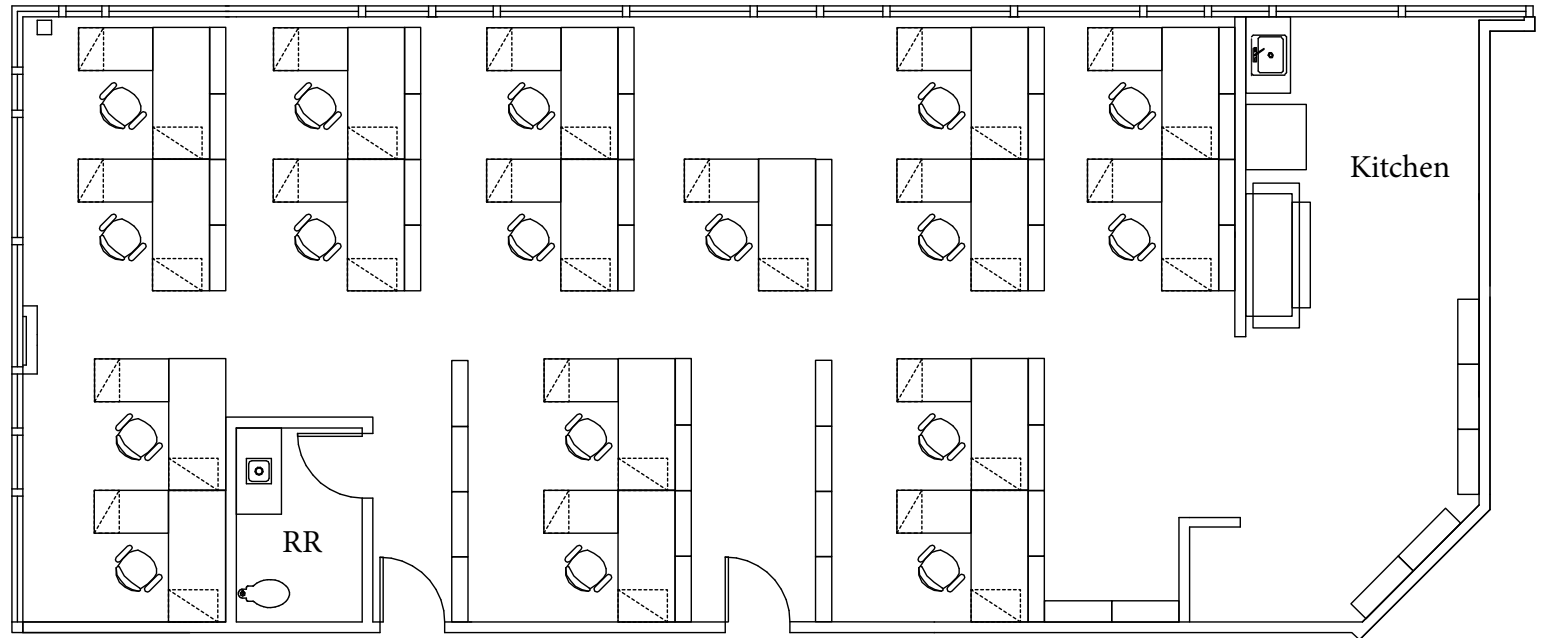
LIC #00949342

2025 No warranty or representation, express or implied, is made to the accuracy or completeness of the information contained herein, and same is submitted subject to errors, omissions, change of price, rental or other conditions, withdrawal without notice, and to any special listing conditions imposed by the property owner(s). As applicable, we make no representation as to the condition of the property (or properties) in question.

FLOOR PLAN

SUITE 270: ±2,317 SF HYPOTHETICAL FURNITURE LAYOUT

- Market Ready
- Open Floor Plan
- Lunchroom
- Private Restroom



Can Combine with Suite 250 for a Total of ±3,899 SF



Not to Scale

FRED EDER

+1 408 489 2263

fred.eder@cushwake.com

LIC #00949342

2025 No warranty or representation, express or implied, is made to the accuracy or completeness of the information contained herein, and same is submitted subject to errors, omissions, change of price, rental or other conditions, withdrawal without notice, and to any special listing conditions imposed by the property owner(s). As applicable, we make no representation as to the condition of the property (or properties) in question.













AMENITIES LIST

801 BREWSTER AVENUE

RESTAURANTS/FOOD

1. Redwood Bistro Chinese Cuisine
Estampas Peruanas
Sodini's Lounge
La Casita Chilanga
2. Dumplings
The Hub
Crouching Tiger
Wild Rover
Kemuri Japanese Burú
Pho Dong
Pete's Coffee
3. Maitz
Bangkok Bay Thai Cuisine
Ikes
Zadna Mediterranean
Naranjos' Taqueria
Seoul Kitchen
De Vine Wine & Beer
San Francisco Gelateria
Gourmet Hast Staudt
4. See's Candy
Panda Express
Little Madfish
Yumi Yogurt
Jamba Juice
Teatime
5. Noah's Bagels
Starbucks
Subway
Franklin Street Café
6. Habit Gourmet
7. Taqueria La Gallina
Orenchi Ramen
The Sandwich Spot
8. Tong Sui
Sana'A Cafe
9. Mademoiselle Collette
10. Broadway Masala
Teaspoon
Bluefin Sushi
11. Cru Wine Bar & Cafe
Hidden Tap & Barrel
Curry Pizza House
12. Go Fish Poke Bar
13. Bolbalicious
Froyola Yogurt
14. Quinto Sol
Café Stellato
Das Bierhauz Biergarten
15. Sakura Sushi
Varam Indian
Philz Coffee
16. Ocean Oyster Bar & Grill
Five Guys
Pizza My Heart
Vitality Bowls
HappyLemon
Hella Mediterrean
Chipotle Mexican Grill
Marufuku Ramen
Con Azucar Cafe
Teriyaki Madness
Timber and Salt
17. Margaritas
Talk of Broadway
Vons Chicken
May's Vietnamese
Nomadic Kitchen
Sushi Kinsen
Broadway Sandwich Market
18. Pasha Mediterannian
19. Humpry Slocombe Ice Cream
20. BAO
Blacksmith
LV Mars
Nick the Greek
Vino Santo Bistro
Vesta
Coffeebar
21. Rockn Wrap and Kabobs
Cardamomo Pizza & Food
Zareen's Pakastani & Indian
Mazra
Nighthawk
22. La Maja
23. Alahambra Irish House
The Bukor Next Door
24. Angelicas
25. Ghostwood Beer Company
Brochette Dumpling & Grill
Ranzan
26. Milagros
Donato Enoteca
27. Carl's Jr.
28. Sizzler
Erik's Deli
29. Taco Bell
30. Starbucks
31. Applebees

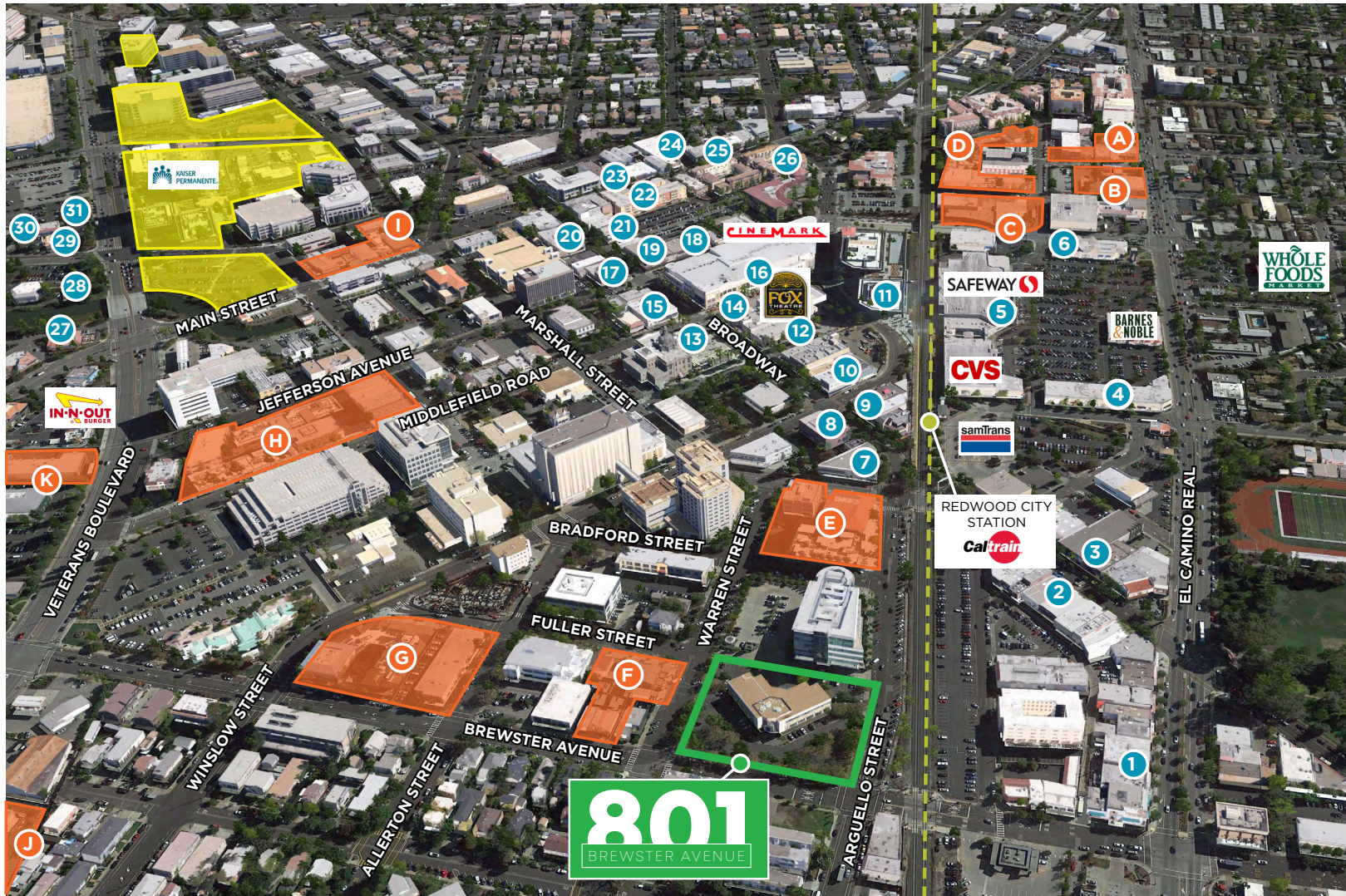
RESIDENTIAL DEVELOPMENTS

- | | | | | | |
|---|---|---|---|---|---|
| <p>A</p> <p>B</p> <p>C</p> <p>D</p> <p>E</p> <p>F</p> |       | <p>GREYSTAR IV
1409 EL CAMINO REAL
350 Apartments Units</p> <p>HUXLEY
1355 EL CAMINO REAL
137 Apartments Units</p> <p>THE CARDINAL APARTMENTS
103 WILSON ST.
175 Residential Units</p> <p>229 FRANKLIN APARTMENTS
299 FRANKLIN ST.
305 Residential Units</p> <p>201 MARSHALL ST.
116 Apartment Units</p> <p>CLASSICS
BREWSTER AVE, FULLER ST. & WARREN AVE.
18 Detached Units</p> | <p>G</p> <p>H</p> <p>I</p> <p>J</p> <p>K</p> |       | <p>LOCALE APARTMENTS
488 WINSLOW ST.
175 Residential Units</p> <p>INDIGO
525 MIDDLEFIELD RD.
436 Apartments & ±10,000 SF of Retail</p> <p>MARTSTON APARTMENTS
601 MAIN ST.
196 Apartments</p> <p>RADIUS
620 VETERANS BLVD.
264 Apartment Units</p> <p>ENCORE
849 VETERANS BLVD.
83 Market Rate For Rent & 7 Affordable Units</p> <p>TOWNSHIP APARTMENTS
335 MAIN ST.
125 Apartment Units
(NOT SHOWN ON MAP)</p> |
|---|---|---|---|---|---|

SOURCE: CITY OF REDWOOD CITY WEBSITE

AMENITIES AERIAL

801 BREWSTER AVENUE



FRED EDER

+1 408 489 2263

fred.eder@cushwake.com

LIC #00949342

2025 No warranty or representation, express or implied, is made to the accuracy or completeness of the information contained herein, and same is submitted subject to errors, omissions, change of price, rental or other conditions, withdrawal without notice, and to any special listing conditions imposed by the property owner(s). As applicable, we make no representation as to the condition of the property (or properties) in question.

801

BREWSTER AVENUE

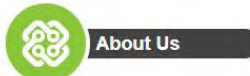
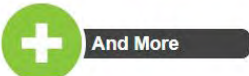
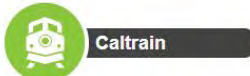
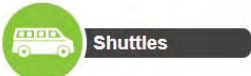
TRANSPORTATION

CONNECTREDWOODCITY.COM/



Living and working in Redwood City just got even better.

Connect, Redwood City! provides residents, visitors and local employees with easy and efficient transit options to link your trips in and around Redwood City. Streamline your commute, run errands, explore Redwood City and much more.

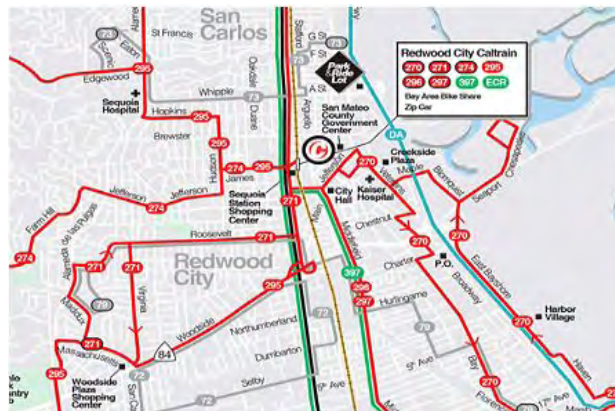


SamTrans

With new Route ECR service on El Camino Real, SamTrans provides a convenient, comfortable, and cost effective option for traveling up and down the Peninsula. On weekdays, buses run every 15 minutes between the Palo Alto Transit Center and the Daly City BART Station and stop at the Redwood City Caltrain station. On weekends, Route ECR operates every 20 minutes.

In addition, connections to other *Connect, Redwood City!* mobility options are available at the Redwood City Transit Center: Zipcar, Caltrain and Commute.org shuttles.

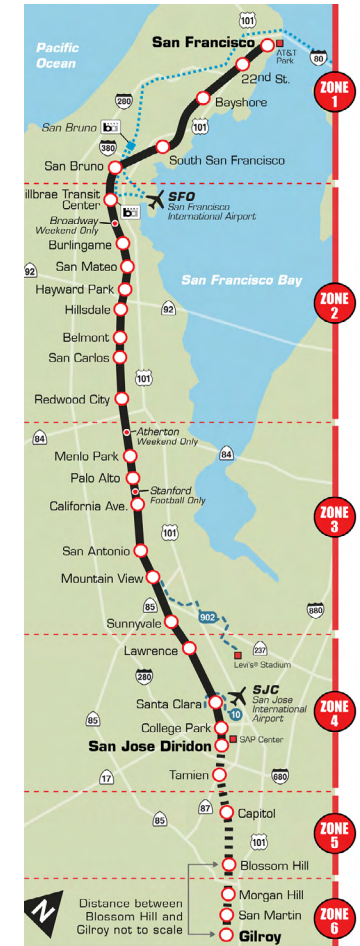
Interested in trying SamTrans for the first time? Check out the [Try Transit](#) program.



Source: <http://connectredwoodcity.com/>

CalTrain System Map

(Schedule on Adjacent Page)



FRED EDER

+1 408 489 2263

fred.eder@cushwake.com

LIC #00949342

2025 No warranty or representation, express or implied, is made to the accuracy or completeness of the information contained herein, and same is submitted subject to errors, omissions, change of price, rental or other conditions, withdrawal without notice, and to any special listing conditions imposed by the property owner(s). As applicable, we make no representation as to the condition of the property (or properties) in question.



801

BREWSTER AVENUE

REDWOOD CITY, CA

FRED EDER

+1 408 489 2263

fred.eder@cushwake.com

LIC #00949342



2025 No warranty or representation, express or implied, is made to the accuracy or completeness of the information contained herein, and same is submitted subject to errors, omissions, change of price, rental or other conditions, withdrawal without notice, and to any special listing conditions imposed by the property owner(s). As applicable, we make no representation as to the condition of the property (or properties) in question.