

RETAIL OPPORTUNITIES AT

700 EIGHTH AVENUE

BETWEEN WEST 44TH STREET AND WEST 45TH STREET



CUSHMAN &
WAKEFIELD



PARAMOUNT
GROUP

AVAILABILITY OVERVIEW

| | Lower Level | Ground Floor | Mezzanine Floor | Total |
|---------|-------------|--------------|-----------------|----------|
| Space A | - | 920 SF | - | 920 SF |
| Space B | 2,400 SF | 330 SF | 3,575 SF | 6,305 SF |
| Space C | 4,900 SF | 256 SF | - | 5,156 SF |

Ability to combine Spaces B and C

CEILING HEIGHTS

| | Lower Level | Ground Floor | Mezzanine Floor |
|---------|--------------|--------------|-----------------|
| Space A | - | 9' 5" | - |
| Space B | 11' 2" – 14' | 12' | 9' 5" – 14' 1" |
| Space C | 9' – 11' 2" | 9' 5" | - |

POSSESSION: IMMEDIATE

TERM: LONG TERM

LEASE TYPE: DIRECT

ASKING RENT: UPON REQUEST

NEIGHBORING RETAILERS
& RESTAURANTS:

Shake Shack, Chick-fil-A, Smashburger, Duane Reade, McDonald's, All'Antico Vinaio, Pastis Bakery, Starbucks, Citibank, Carlo's Bakery and more

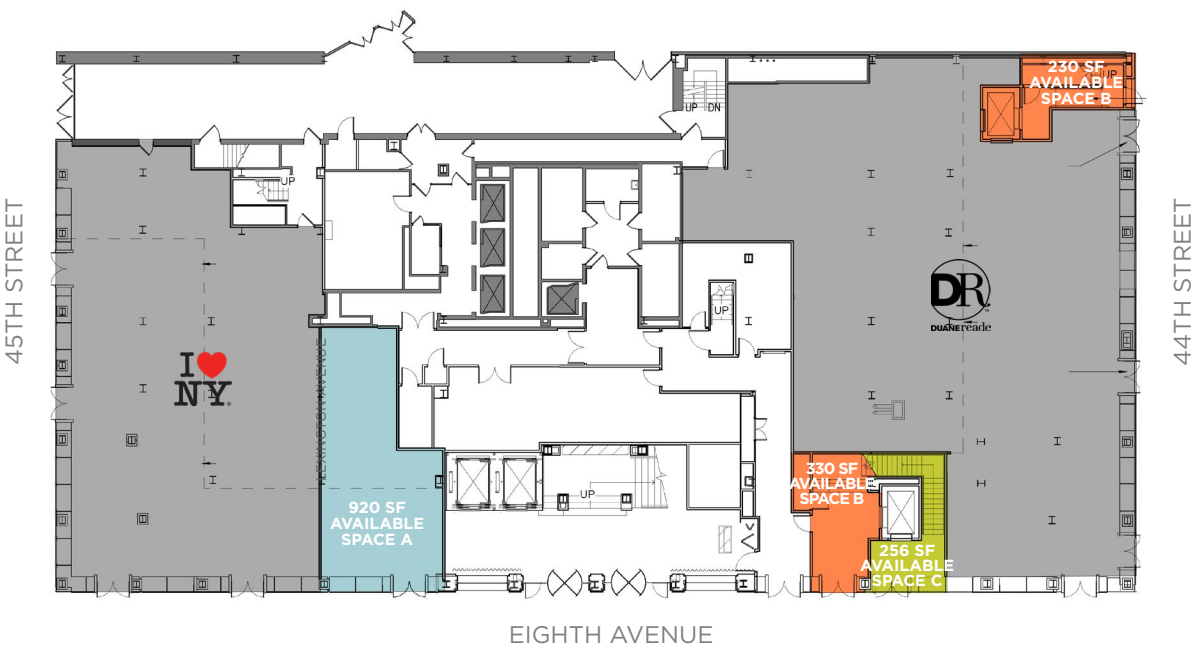
HIGHLIGHTS

- Excellent retail opportunities on Midtown's bustling Eighth Avenue
- Expansive branding opportunity with visibility from West 42nd Street/Eighth Avenue intersection
- All spaces feature upgraded all-glass storefronts and high ceilings
- **Space A** – Situated just north of the building lobby and ideal for all dry use retail and non-vented food uses
- **Space B** – Dedicated Ground Floor entry with vertical transportation in place to expansive Second Floor
- **Space C** – Dedicated Ground Floor entry to functional lower level, perfect for fitness users, dry use retail and experience tenants
- Divisions and combination scenarios considered with an opportunity to lease up to 11,461 SF

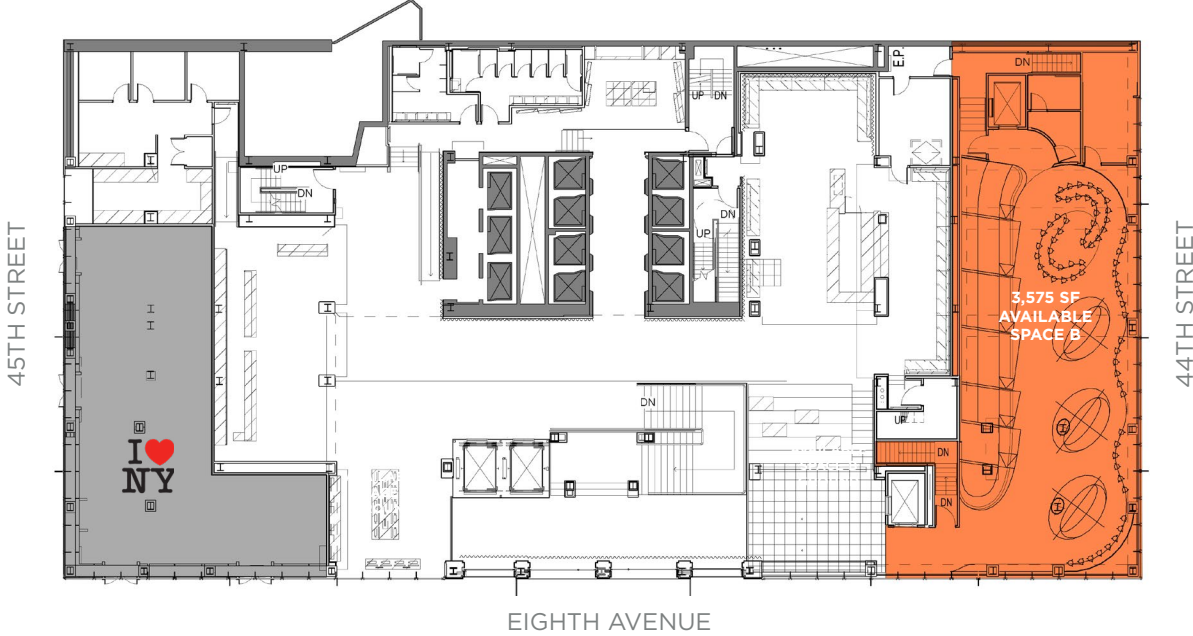


FLOOR PLANS

GROUND FLOOR



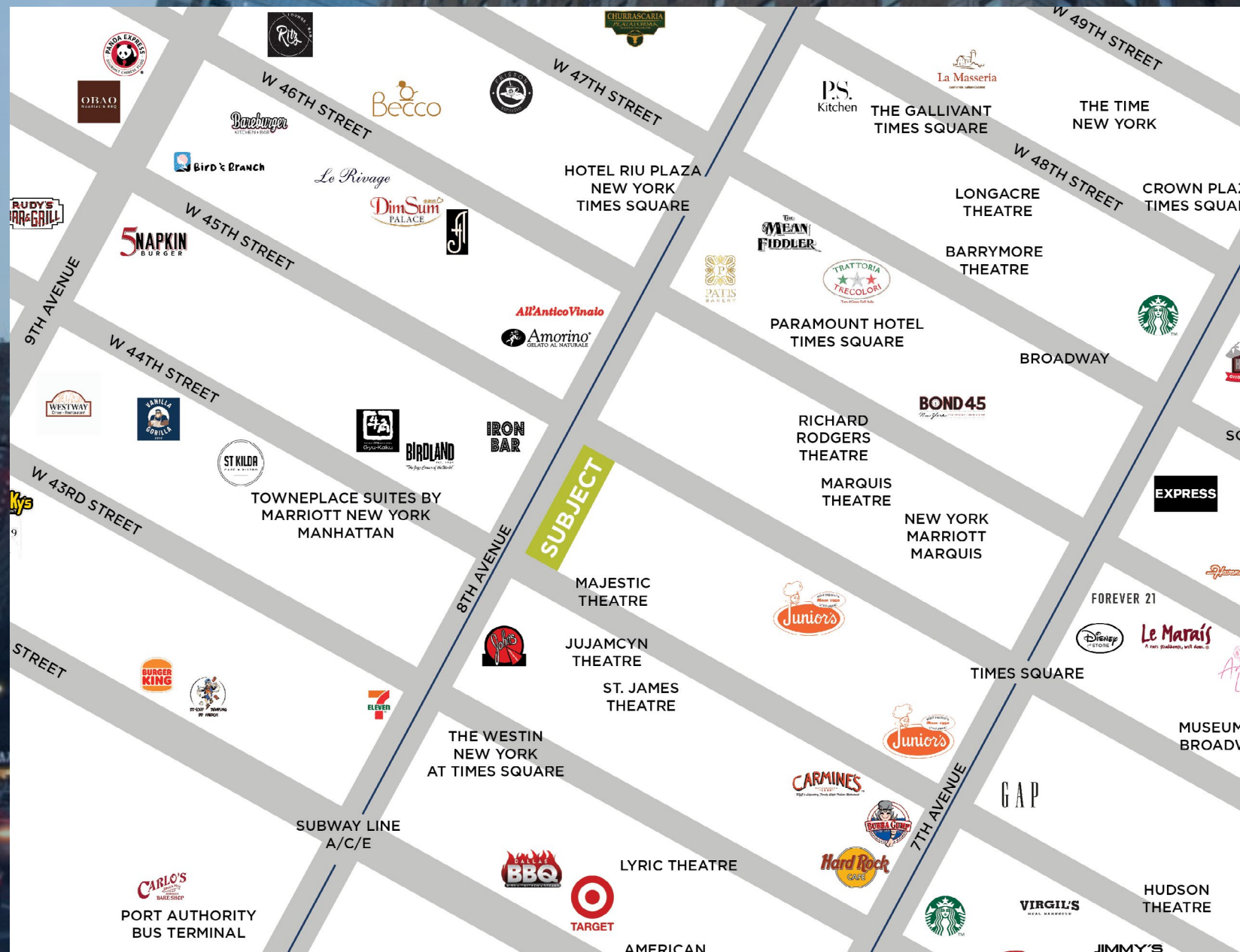
MEZZANINE FLOOR



LOWER LEVEL



AREA MAP



CONTACT INFORMATION

ALAN SCHMERZLER

(212) 841-5930

alan.schmerzler@cushwake.com

STEVEN SOUTENDIJK

(212) 713-6845

steven.soutendijk@cushwake.com

SEAN MORAN

(212) 841-7668

sean.moran@cushwake.com

CATHERINE MERCK

(212) 698-2621

catherine.merck@cushwake.com



©2023 Cushman & Wakefield. All rights reserved. The information contained in this communication is strictly confidential. This information has been obtained from sources believed to be reliable but has not been verified. NO WARRANTY OR REPRESENTATION, EXPRESS OR IMPLIED, IS MADE AS TO THE CONDITION OF THE PROPERTY (OR PROPERTIES) REFERENCED HEREIN OR AS TO THE ACCURACY OR COMPLETENESS OF THE INFORMATION CONTAINED HEREIN, AND SAME IS SUBMITTED SUBJECT TO ERRORS, OMISSIONS, CHANGE OF PRICE, RENTAL OR OTHER CONDITIONS, WITHDRAWAL WITHOUT NOTICE, AND TO ANY SPECIAL LISTING CONDITIONS IMPOSED BY THE PROPERTY OWNER(S). ANY PROJECTIONS, OPINIONS OR ESTIMATES ARE SUBJECT TO UNCERTAINTY AND DO NOT SIGNIFY CURRENT OR FUTURE PROPERTY PERFORMANCE.