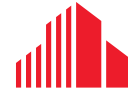


FOR LEASE

BITTERSWEET SQUARE

3400 W 16TH STREET, BUILDING 7
GREELEY, CO 80634



CUSHMAN &
WAKEFIELD

AVAILABLE NOW



1,274 SF LOWER LEVEL STORAGE/OFFICE SPACE FOR LEASE LEASE RATE: \$10.00/SF FULL SERVICE

Bittersweet Square is well-maintained with property management on site and centrally located in Greeley on a visible corner with high traffic counts, signage, and an abundance of parking.

PROPERTY FEATURES

Available Size	1,274 SF (divisible)
YOC	1975
YOR	2017
Parking	229 Spaces
Zoning	CL (Commercial Low Intensity)

PROPERTY HIGHLIGHTS

- Private entrance
- Climate controlled
- High traffic counts
- Courtyard
- Centrally located



COURTYARD

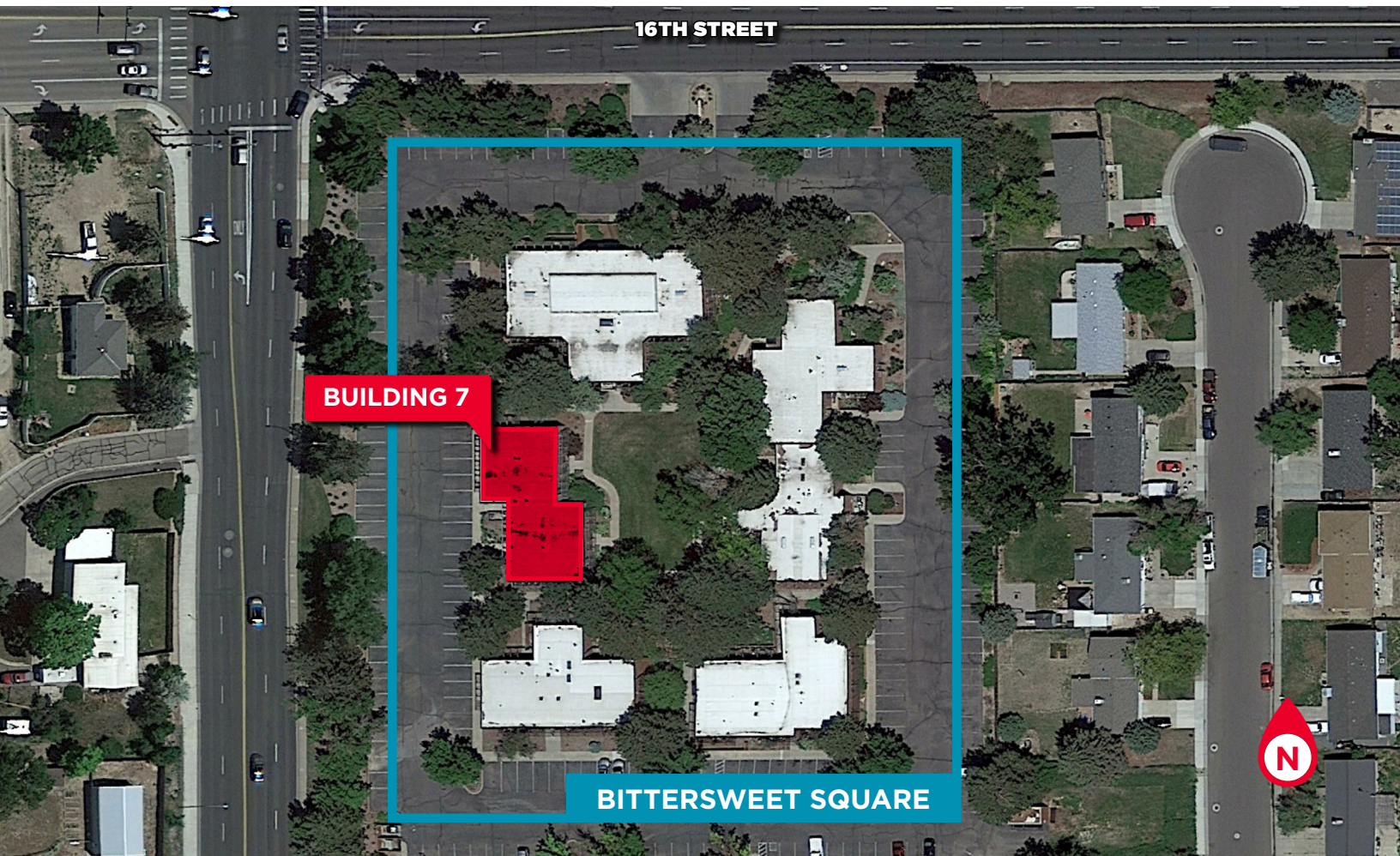
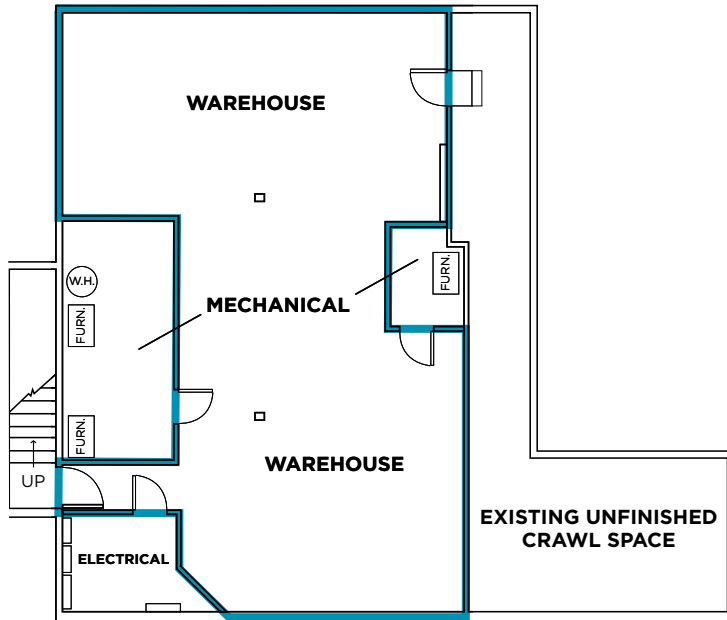
FOR LEASE

BITTERSWEET SQUARE

3400 W 16TH STREET, BUILDING 7
GREELEY, CO 80634



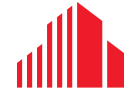
LOWER LEVEL / 1,274 SF



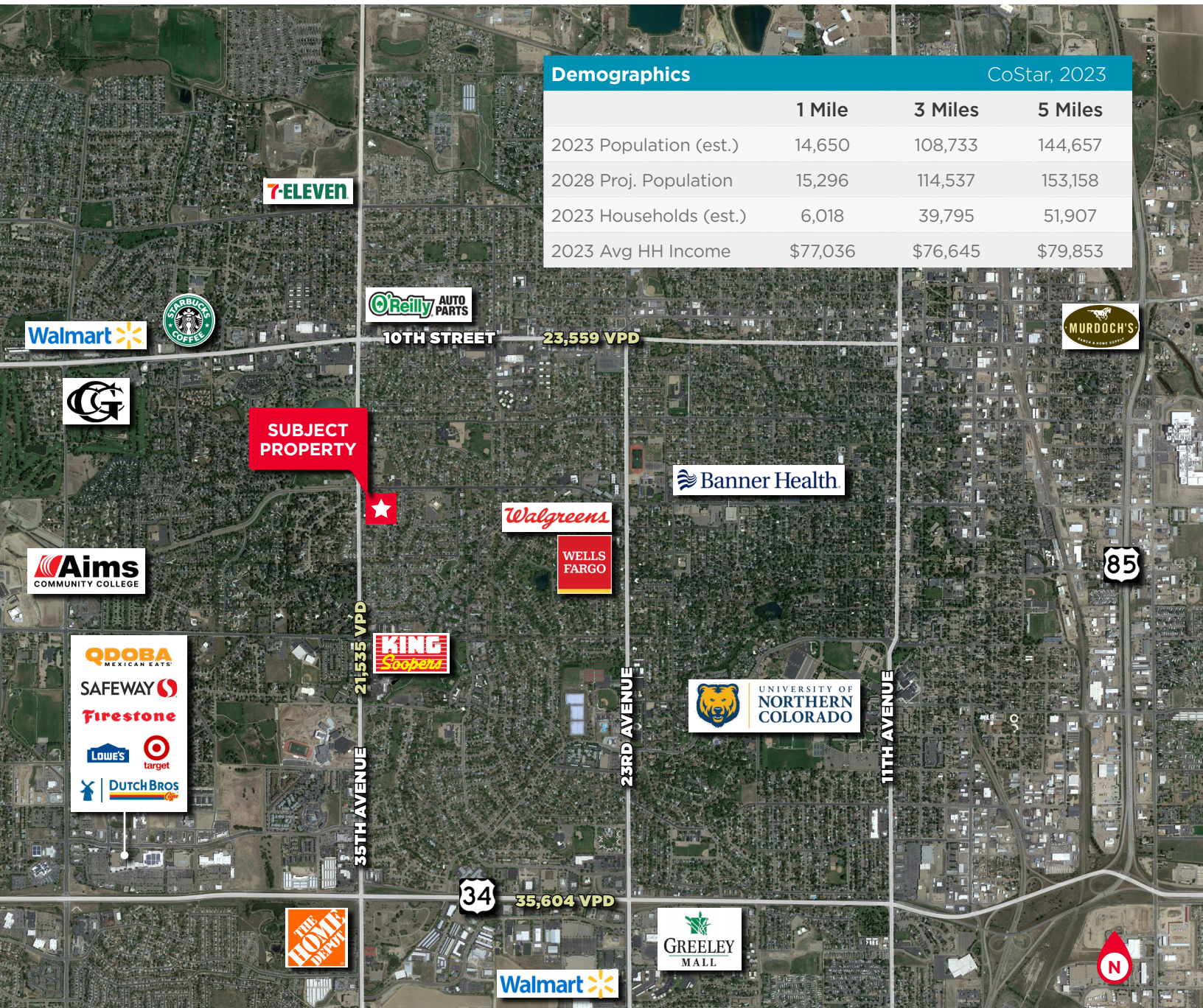
FOR LEASE

BITTERSWEET SQUARE

3400 W 16TH STREET, BUILDING 7
GREELEY, CO 80634



CUSHMAN &
WAKEFIELD



Contact

AKI PALMER

Executive Director
+1 970 267 7727

aki.palmer@cushwake.com

COLE VANMEVEREN

Director
+1 970 219 3802

cole.vanmeveren@cushwake.com

JAMES ARNOLD

Senior Associate
+1 720 354 2059

james.arnold@cushwake.com

772 Whalers Way, Suite 200
Fort Collins, Colorado 80525

+1 970 776 3900

cushmanwakefield.com

©2023 Cushman & Wakefield. All rights reserved. The information contained in this communication is strictly confidential. This information has been obtained from sources believed to be reliable but has not been verified. No warranty or representation, express or implied, is made as to the condition of the property (or properties) referenced herein or as to the accuracy or completeness of the information contained herein, and same is submitted subject to errors, omissions, change of price, rental or other conditions, withdrawal without notice, and to any special listing conditions imposed by the property owner(s). Any projections, opinions or estimates are subject to uncertainty and do not signify current or future property performance.