



FOR LEASE

**580 2nd Street**  
Oakland, California

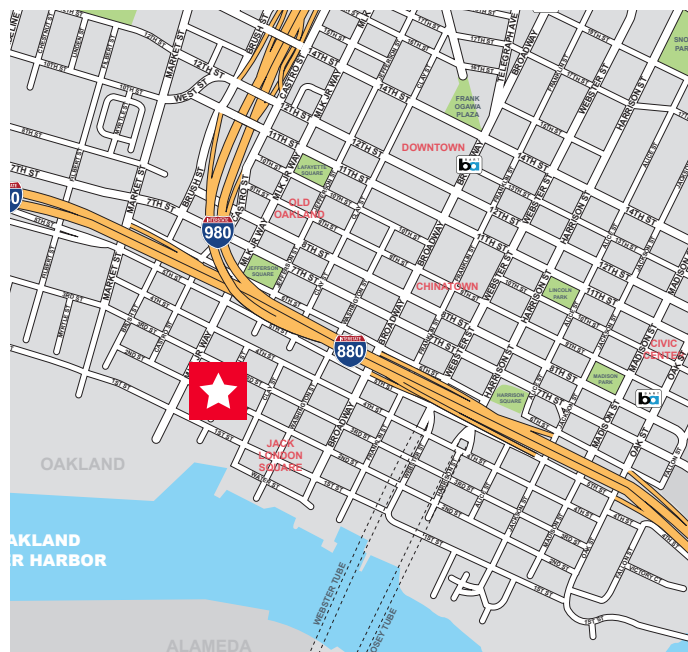


**Suite 290: ±4,042 SF**

## Property Highlights

- Free, Gated, On-Site Parking
- Creative Office with Built-In Desks and Lots of Private Offices
- Towering Barn Like Ceiling
- Exposed Wood Beams
- Lots of Natural Light
- On-Site Parking Available
- Adjacent to Jack London Square Restaurant & Retail Amenities

**Lease Rate: \$2.70 Industrial Gross**



**David Englert**  
Senior Director  
+1 510 267 6037  
david.englert@cushwake.com  
LIC #01291709

555 12th Street, Suite 1400  
Oakland, CA 94607  
main +1 510 465 8000  
**cushmanwakefield.com**

©2023 Cushman & Wakefield. All rights reserved. The information contained in this communication is strictly confidential. This information has been obtained from sources believed to be reliable but has not been verified. NO WARRANTY OR REPRESENTATION, EXPRESS OR IMPLIED, IS MADE AS TO THE CONDITION OF THE PROPERTY (OR PROPERTIES) REFERENCED HEREIN OR AS TO THE ACCURACY OR COMPLETENESS OF THE INFORMATION CONTAINED HEREIN, AND SAME IS SUBMITTED SUBJECT TO ERRORS, OMISSIONS, CHANGE OF PRICE, RENTAL OR OTHER CONDITIONS, WITHDRAWAL WITHOUT NOTICE, AND TO ANY SPECIAL LISTING CONDITIONS IMPOSED BY THE PROPERTY OWNER(S). ANY PROJECTIONS, OPINIONS OR ESTIMATES ARE SUBJECT TO UNCERTAINTY AND DO NOT SIGNIFY CURRENT OR FUTURE PROPERTY PERFORMANCE.

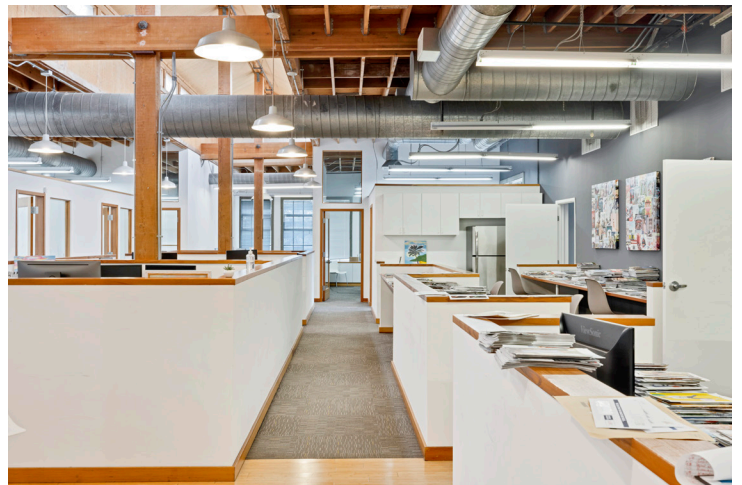
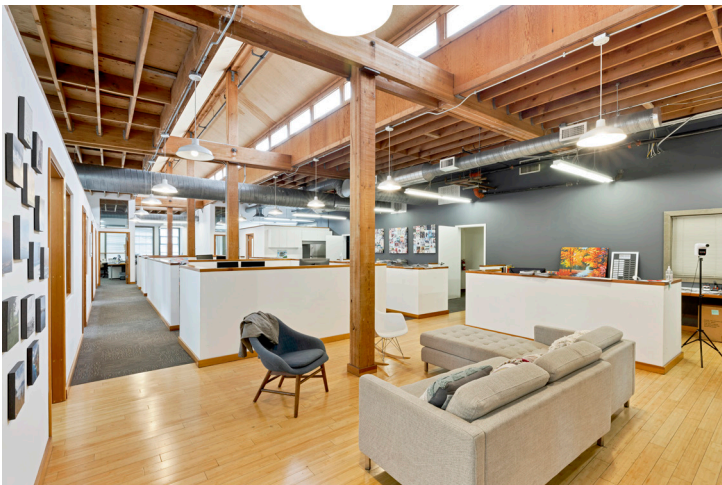
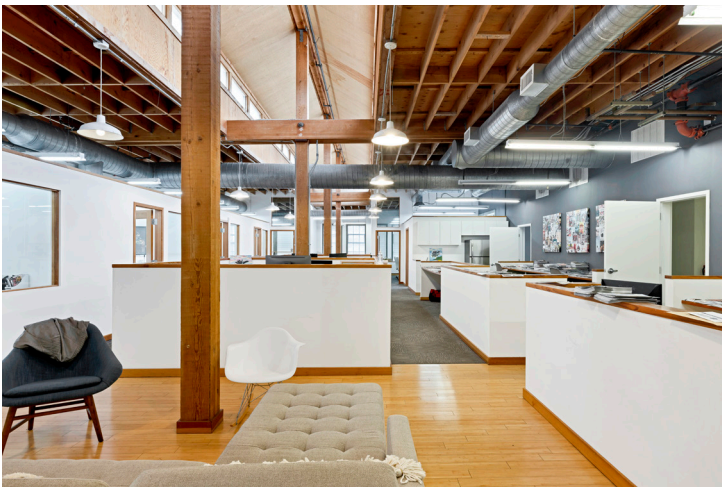




FOR LEASE

**580 2nd Street**  
Oakland, California

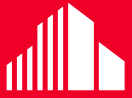
## Interior Photos



**David Englert**  
Senior Director  
+1 510 267 6037  
david.englert@cushwake.com  
LIC #01291709

555 12th Street, Suite 1400  
Oakland, CA 94607  
main +1 510 465 8000  
**cushmanwakefield.com**

©2023 Cushman & Wakefield. All rights reserved. The information contained in this communication is strictly confidential. This information has been obtained from sources believed to be reliable but has not been verified. NO WARRANTY OR REPRESENTATION, EXPRESS OR IMPLIED, IS MADE AS TO THE CONDITION OF THE PROPERTY (OR PROPERTIES) REFERENCED HEREIN OR AS TO THE ACCURACY OR COMPLETENESS OF THE INFORMATION CONTAINED HEREIN, AND SAME IS SUBMITTED SUBJECT TO ERRORS, OMISSIONS, CHANGE OF PRICE, RENTAL OR OTHER CONDITIONS, WITHDRAWAL WITHOUT NOTICE, AND TO ANY SPECIAL LISTING CONDITIONS IMPOSED BY THE PROPERTY OWNER(S). ANY PROJECTIONS, OPINIONS OR ESTIMATES ARE SUBJECT TO UNCERTAINTY AND DO NOT SIGNIFY CURRENT OR FUTURE PROPERTY PERFORMANCE.

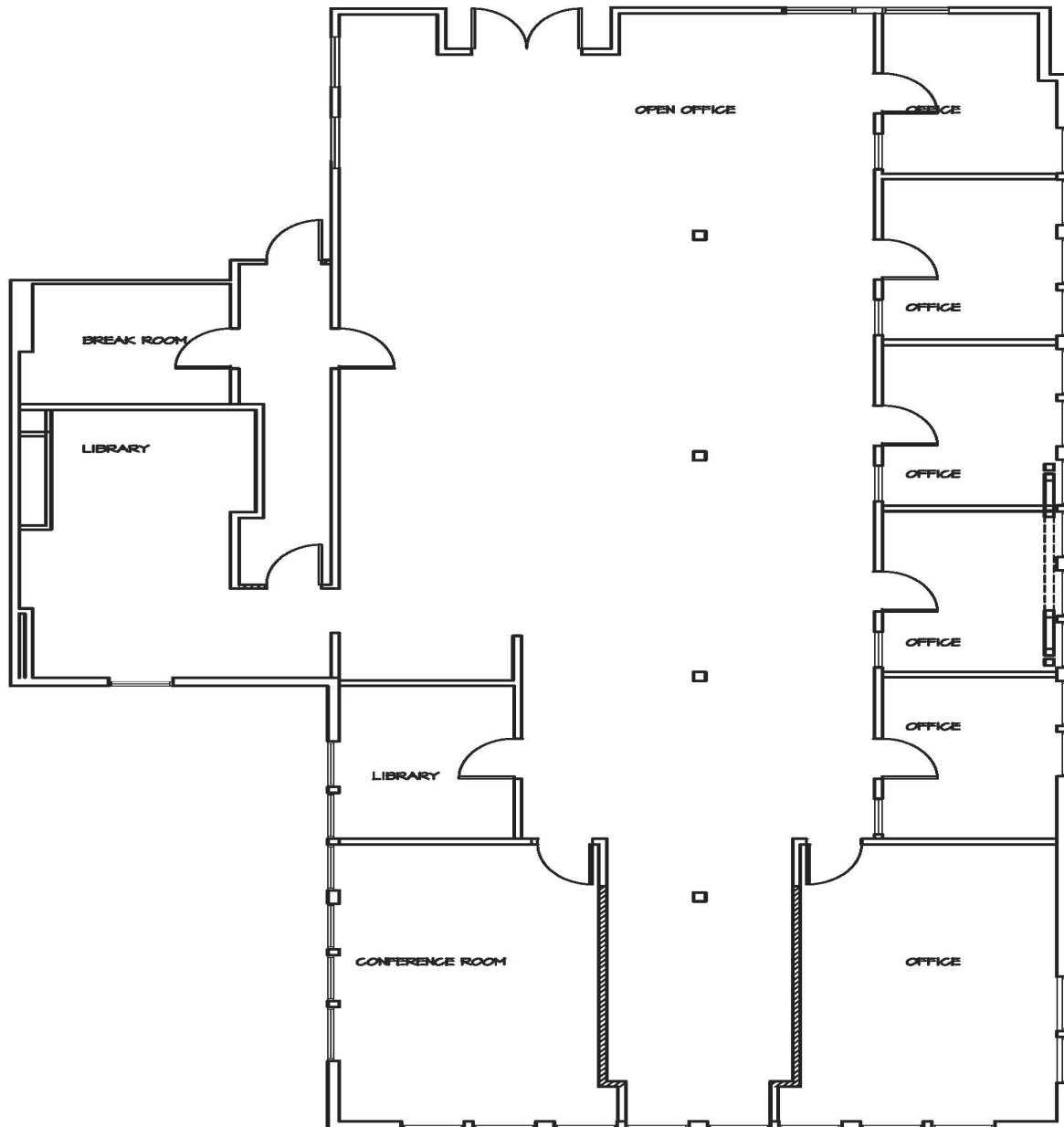


**CUSHMAN &  
WAKEFIELD**

FOR LEASE

**580 2nd Street**  
Oakland, California

**Floor Plan - Suite 290**



**David Englert**  
Senior Director  
+1 510 267 6037  
david.englert@cushwake.com  
LIC #01291709

555 12th Street, Suite 1400  
Oakland, CA 94607  
main +1 510 465 8000  
**cushmanwakefield.com**

©2023 Cushman & Wakefield. All rights reserved. The information contained in this communication is strictly confidential. This information has been obtained from sources believed to be reliable but has not been verified. NO WARRANTY OR REPRESENTATION, EXPRESS OR IMPLIED, IS MADE AS TO THE CONDITION OF THE PROPERTY (OR PROPERTIES) REFERENCED HEREIN OR AS TO THE ACCURACY OR COMPLETENESS OF THE INFORMATION CONTAINED HEREIN, AND SAME IS SUBMITTED SUBJECT TO ERRORS, OMISSIONS, CHANGE OF PRICE, RENTAL OR OTHER CONDITIONS, WITHDRAWAL WITHOUT NOTICE, AND TO ANY SPECIAL LISTING CONDITIONS IMPOSED BY THE PROPERTY OWNER(S). ANY PROJECTIONS, OPINIONS OR ESTIMATES ARE SUBJECT TO UNCERTAINTY AND DO NOT SIGNIFY CURRENT OR FUTURE PROPERTY PERFORMANCE.