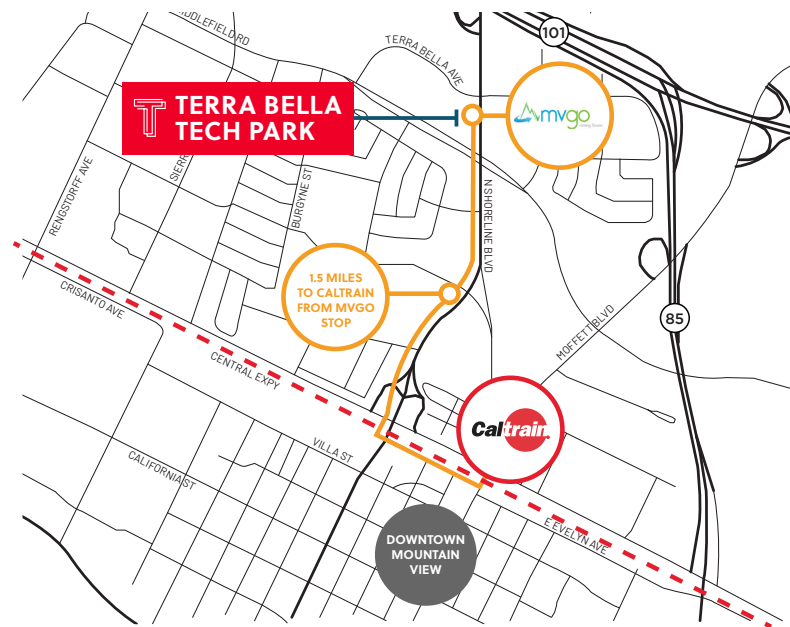


TERRA BELLA TECH PARK



PROPERTY HIGHLIGHTS

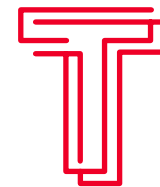
- Plug & Play
- Suite 200: ±12,861 SF Office/R&D
- Prime Silicon Valley Location
- Flexible Lease Terms & Expansion Opportunities
- Mountain View Amenities
- Prominent Building & Monument Signage Opportunities
- Abundant Parking Throughout Project
- Immediate Access to Shoreline Blvd and Hwy 101
- On-Site CalTrain Shuttle Station
- 5-Minute Shuttle to DTMV & CalTrain Station
- Grade Level Loading
- Potential Expansion to the entire ±25,000 SF Building on a Direct Basis



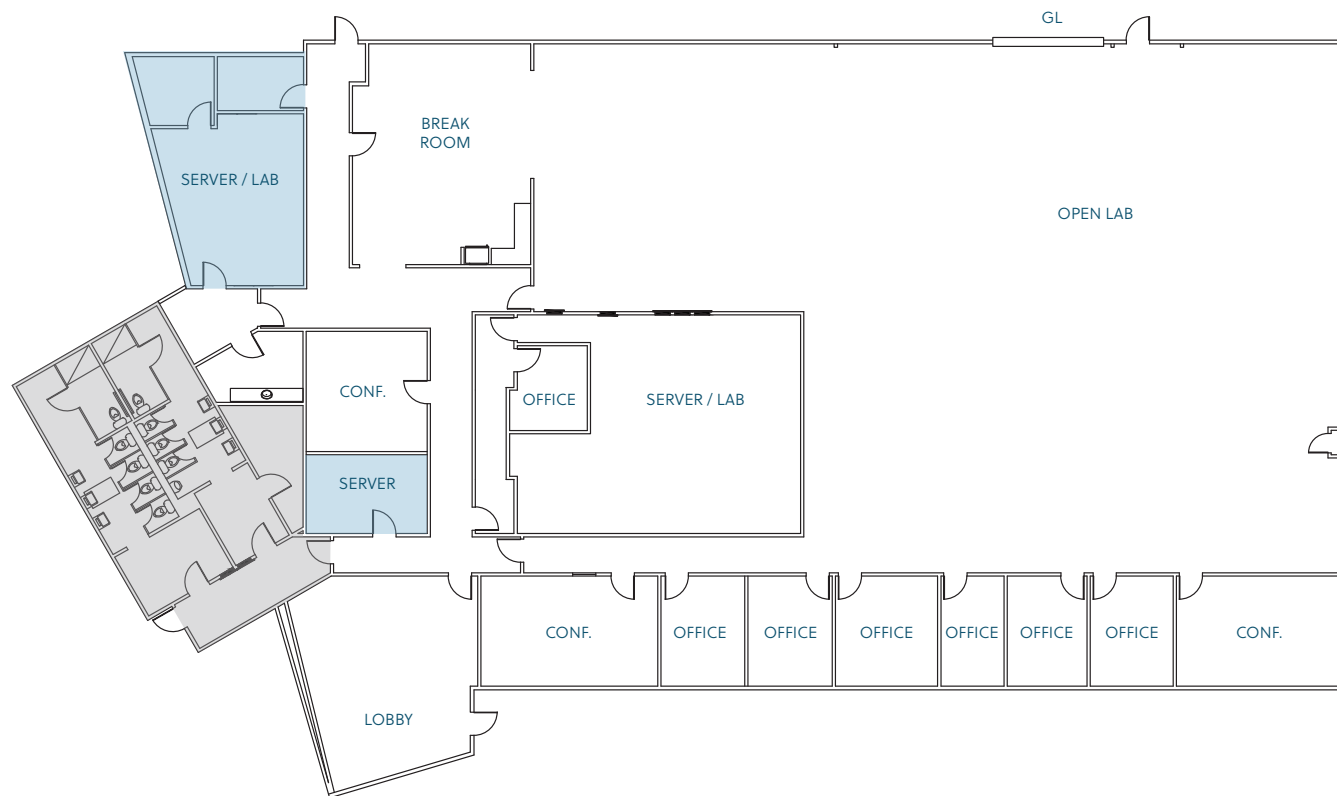
SUITE 200: ±12,861 SF OFFICE/R&D FOR SUBLEASE

1215 TERRA BELLA AVE.

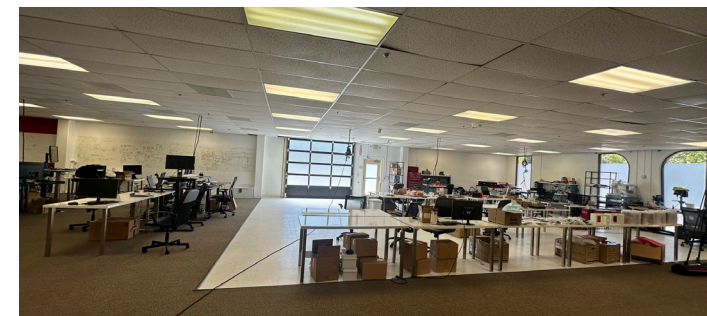
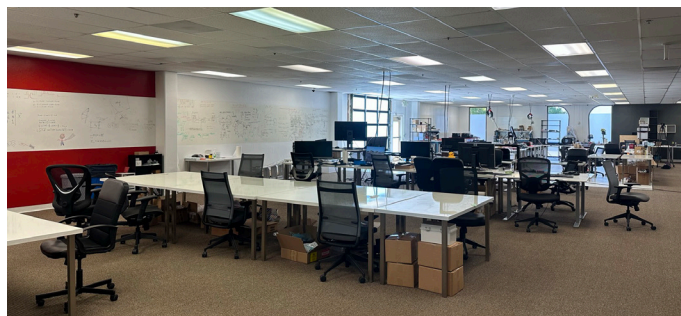
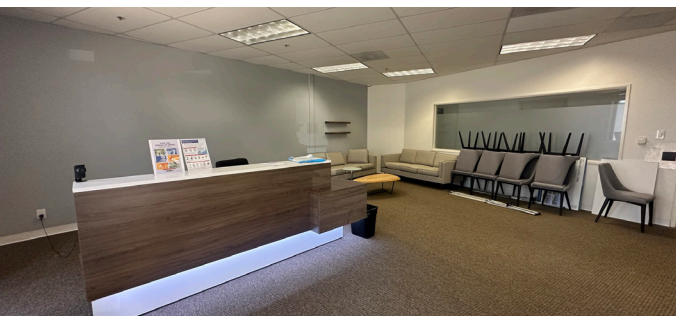
Suite 200: ±12,861 SF



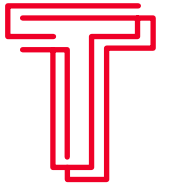
AVAILABILITY	Now
POWER	900A @ 277/480V, 3-Phase
LOADING	1 Grade Level
HVAC	100%
PARKING	4/1,000
SIGNAGE	Building & Monument
COMMENTS	Lab Space, Server Rooms, Open Break Room, Furniture Available, Mothers Room



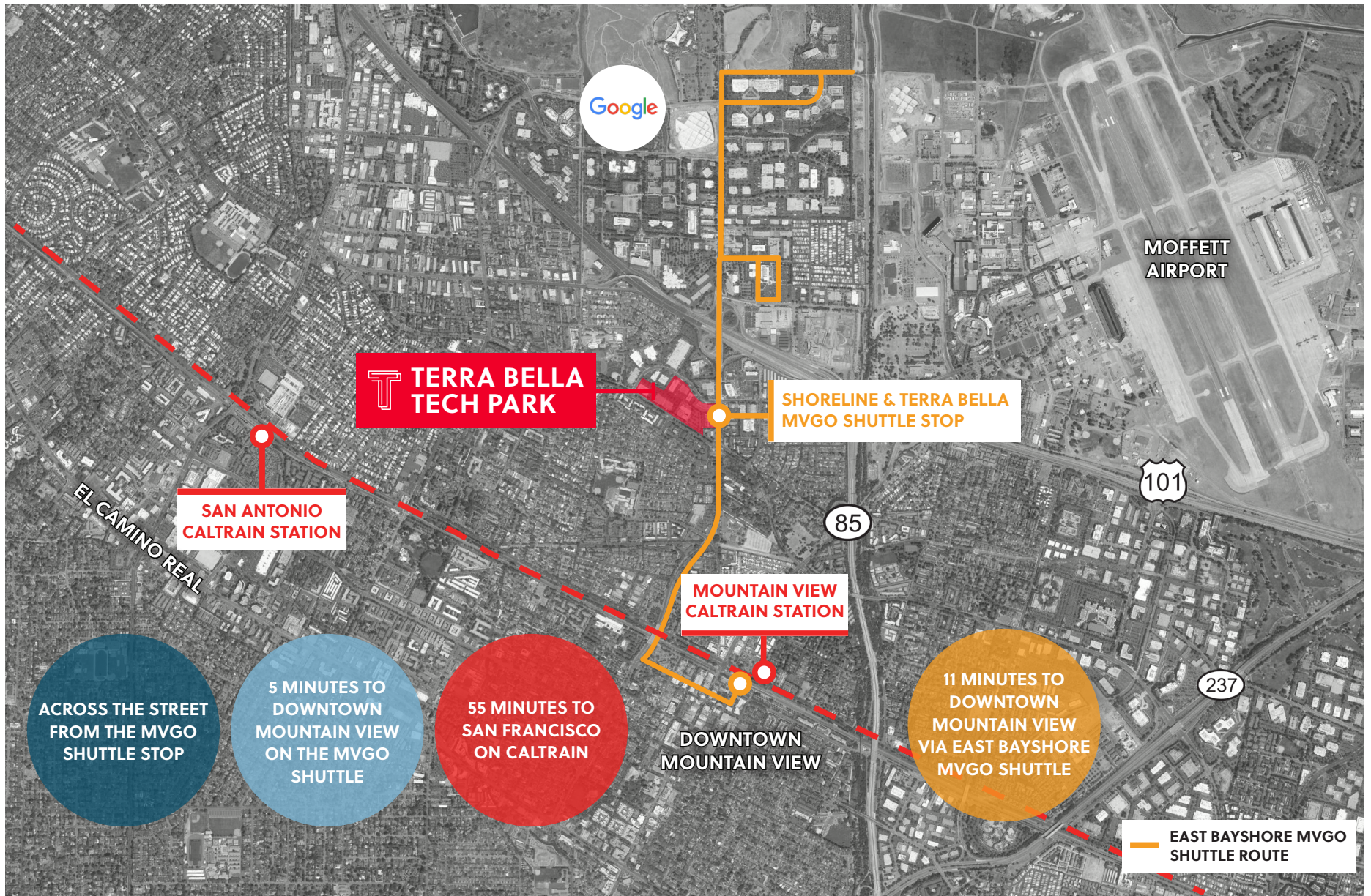
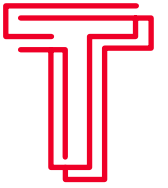
■ VCT ■ COMMON AREA



NEARBY AMENITIES



LOCAL TRANSIT





TERRA BELLA TECH PARK

SUITE 200: ±12,861 SF OFFICE/R&D FOR SUBLEASE

STEVEN JENAB
DIRECTOR

+1 650 320 0211

steven.jenab@cushwake.com

LIC #02085072

BRIAN RIEBEN
EXECUTIVE MANAGING DIRECTOR

+1 650 320 0262

brian.riebe@cushwake.com

LIC #01850928

525 University Avenue, Suite 220, Palo Alto, California 94301

T +1 650 852 1200 | F +1 650 856 1098

cushmanwakefield.com



©August 16, 2023 2:40 PM Cushman & Wakefield. All rights reserved. The information contained in this communication is strictly confidential. This information has been obtained from sources believed to be reliable but has not been verified. No warranty or representation, express or implied, is made as to the condition of the property (or properties) referenced herein or as to the accuracy or completeness of the information contained herein, and same is submitted subject to errors, omissions, change of price, rental or other conditions, withdrawal without notice, and to any special listing conditions imposed by the property owner(s). Any projections, opinions or estimates are subject to uncertainty and do not signify current or future property performance.