

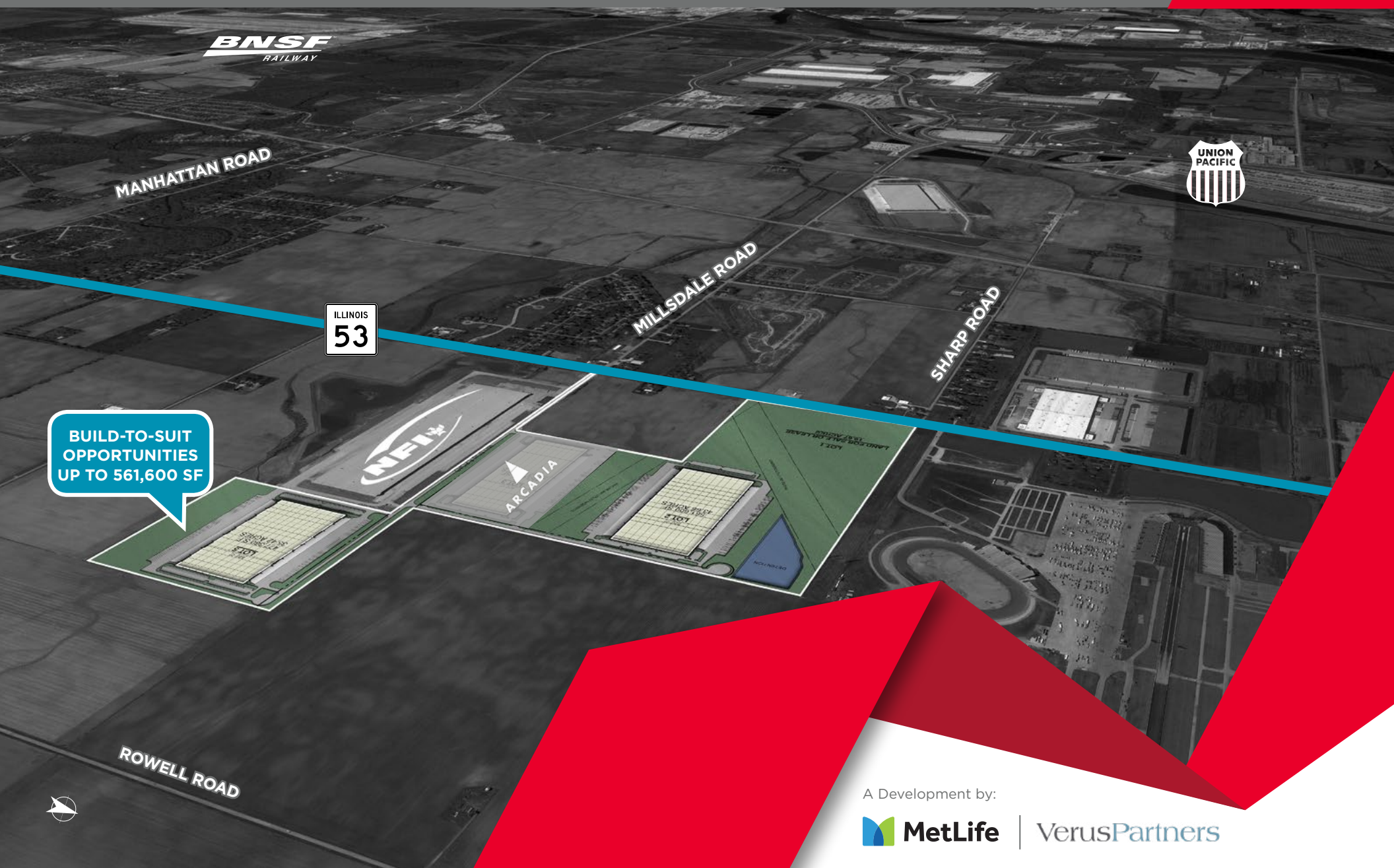
JOLIET LOGISTICS PARK

MILLSDALE RD & ROUTE 53, JOLIET, IL



±124.62 Acres Available For Sale or Build-To-Suit Development

**FLEXIBLE.
ACCESSIBLE.
AVAILABLE.**



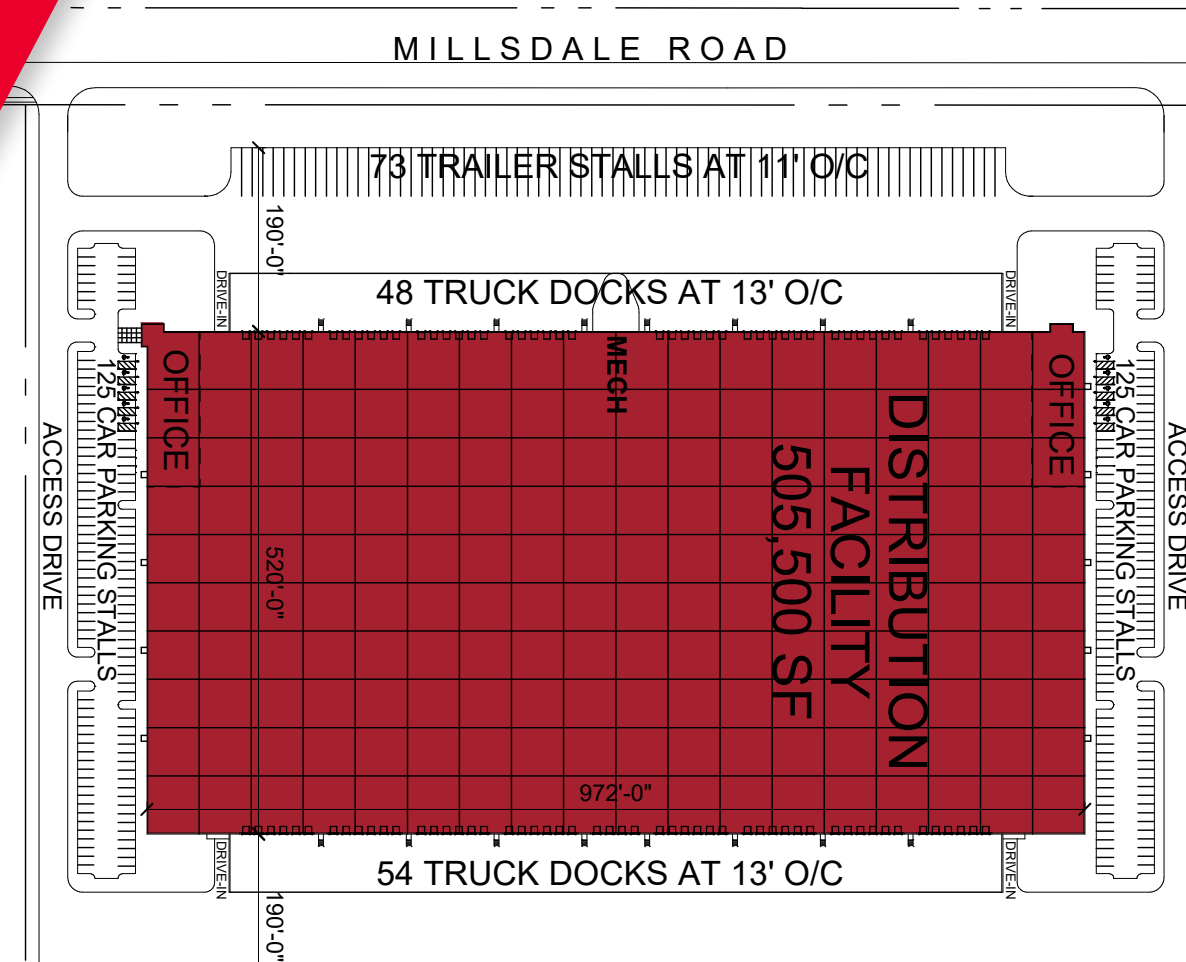
A Development by:



VerusPartners

JOLIET LOGISTICS PARK

MILLSDALE RD & ROUTE 53, JOLIET, IL



LOT 5 BUILDING



505,500 SF
Space Available



40'
Clear Height



102
Exterior Docks



4
Drive-in Doors



181
Trailer Parking Stalls



190'
Truck Court



250
Car Parking Stalls



50' X 54'
Column Spacing
(60' Staging)

JASON WEST, SIOR
Executive Vice Chair
+1 847 518 3210
jason.west@cushwake.com

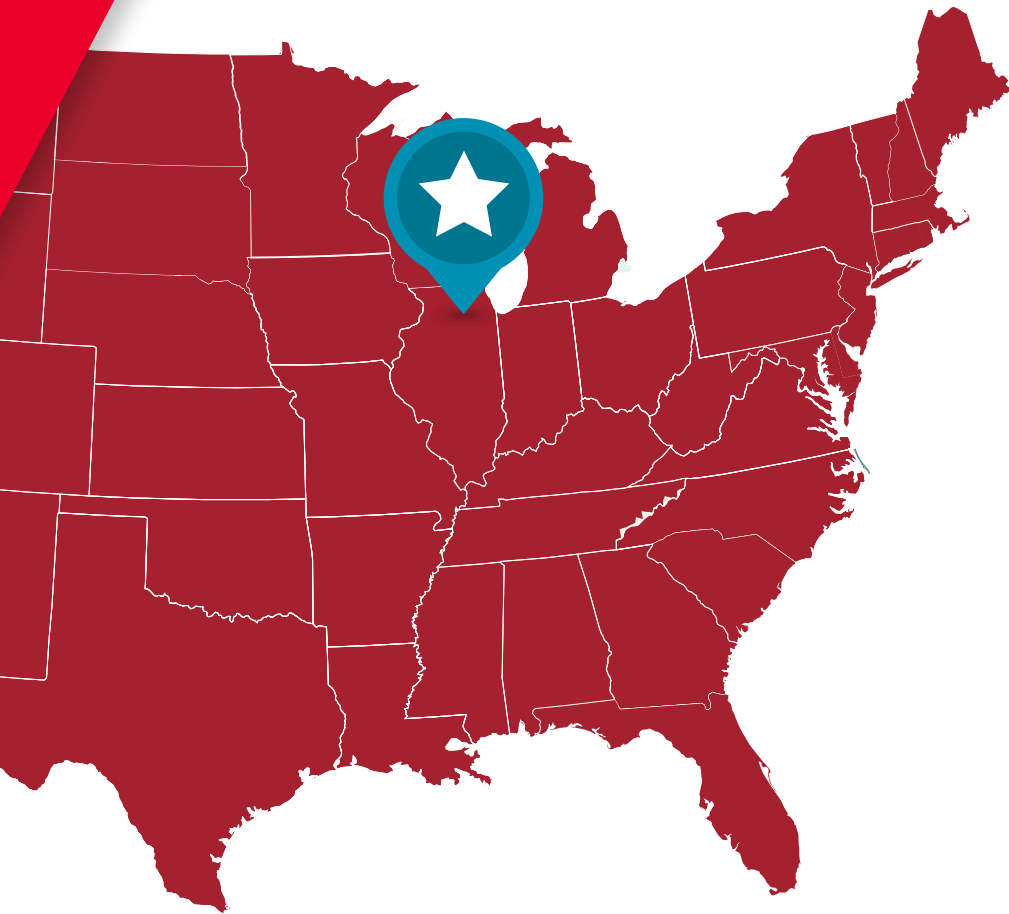
SEAN HENRICK, SIOR, CCIM
Vice Chair
+1 847 518 3215
sean.henrick@cushwake.com

RYAN D. KLINK
Managing Director
+1 847 518 3211
ryan.klink@cushwake.com

9500 W. Bryn Mawr, Suite 600
Rosemont, Illinois 60018
+1 847 518 9100
cushmanwakefield.com

JOLIET LOGISTICS PARK

MILLSDALE RD & ROUTE 53, JOLIET, IL



LOCATION HIGHLIGHTS



SITE PLAN

Up to ±124.62 acres
for sale or build-to-suit
development



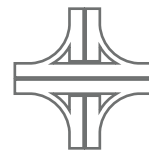
RAIL SERVICE

Immediate access to
BNSF and Union Pacific
intermodal terminals



DISTRIBUTION

Reach 25% of the US
population within
one-day delivery



ACCESS

Strategically situated
between I-80 and I-55
for easy access



LABOR

Leverage a workforce
of over 1 million within a
45-minute drive



GOVERNMENT

Business friendly
local and county
government

JASON WEST, SIOR

Executive Vice Chair
+1 847 518 3210
jason.west@cushwake.com

SEAN HENRICK, SIOR, CCIM

Vice Chair
+1 847 518 3215
sean.henrick@cushwake.com

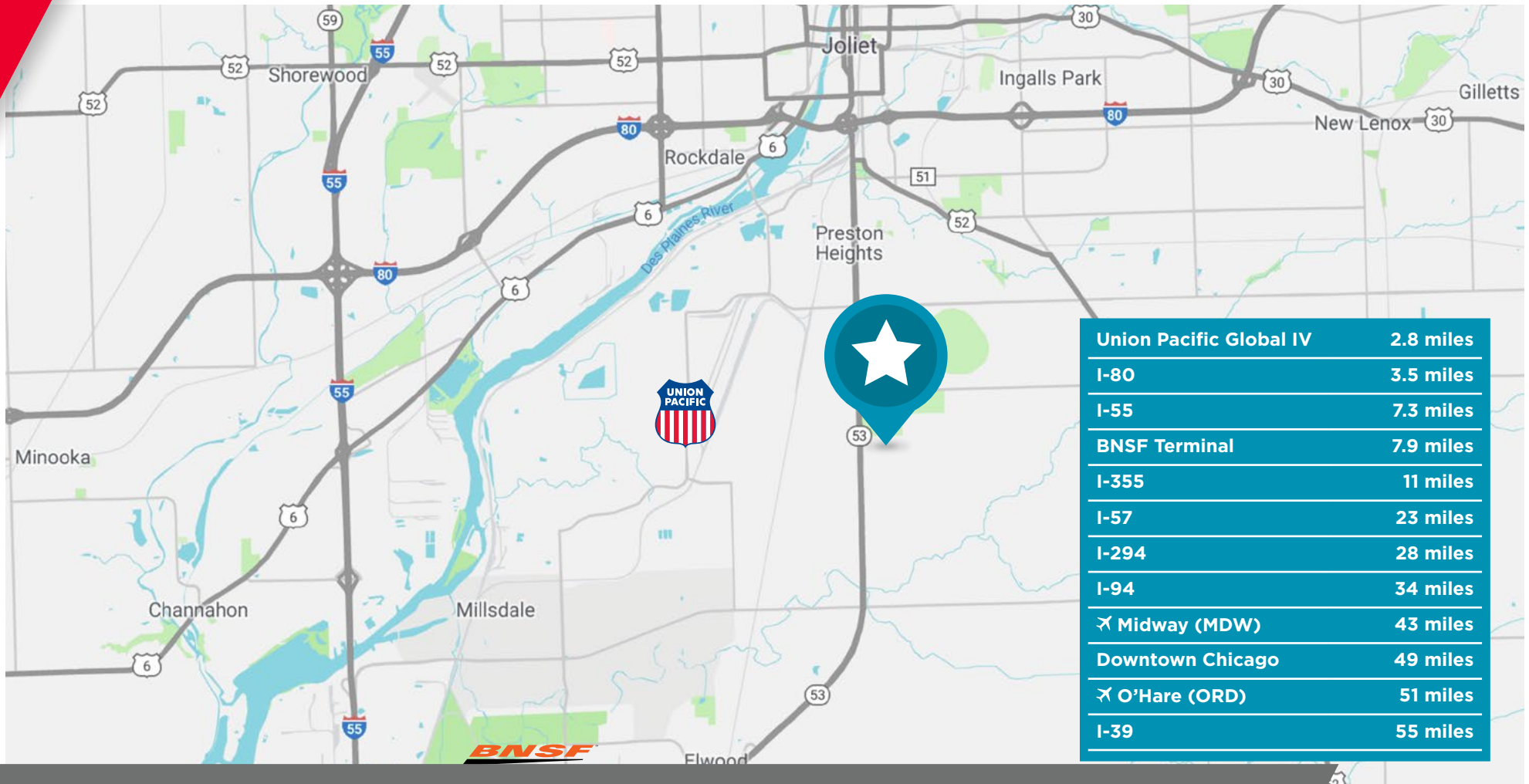
RYAN D. KLINK

Managing Director
+1 847 518 3211
ryan.klink@cushwake.com

9500 W. Bryn Mawr, Suite 600
Rosemont, Illinois 60018
+1 847 518 9100
cushmanwakefield.com

JOLIET LOGISTICS PARK

MILLSDALE RD & ROUTE 53, JOLIET, IL



JASON WEST, SIOR
Executive Vice Chair
+1 847 518 3210
jason.west@cushwake.com

SEAN HENRICK, SIOR, CCIM
Vice Chair
+1 847 518 3215
sean.henrick@cushwake.com

RYAN D. KLINK
Managing Director
+1 847 518 3211
ryan.klink@cushwake.com

9500 W. Bryn Mawr, Suite 600
Rosemont, Illinois 60018
+1 847 518 9100
cushmanwakefield.com