



OFFICE SPACE FOR LEASE  
**175 AT MONTROSE WEST AVENUE**  
AKRON, OHIO 44321



# 175 MONTROSE WEST

## AKRON, OHIO 44321

### HIGHLIGHTS

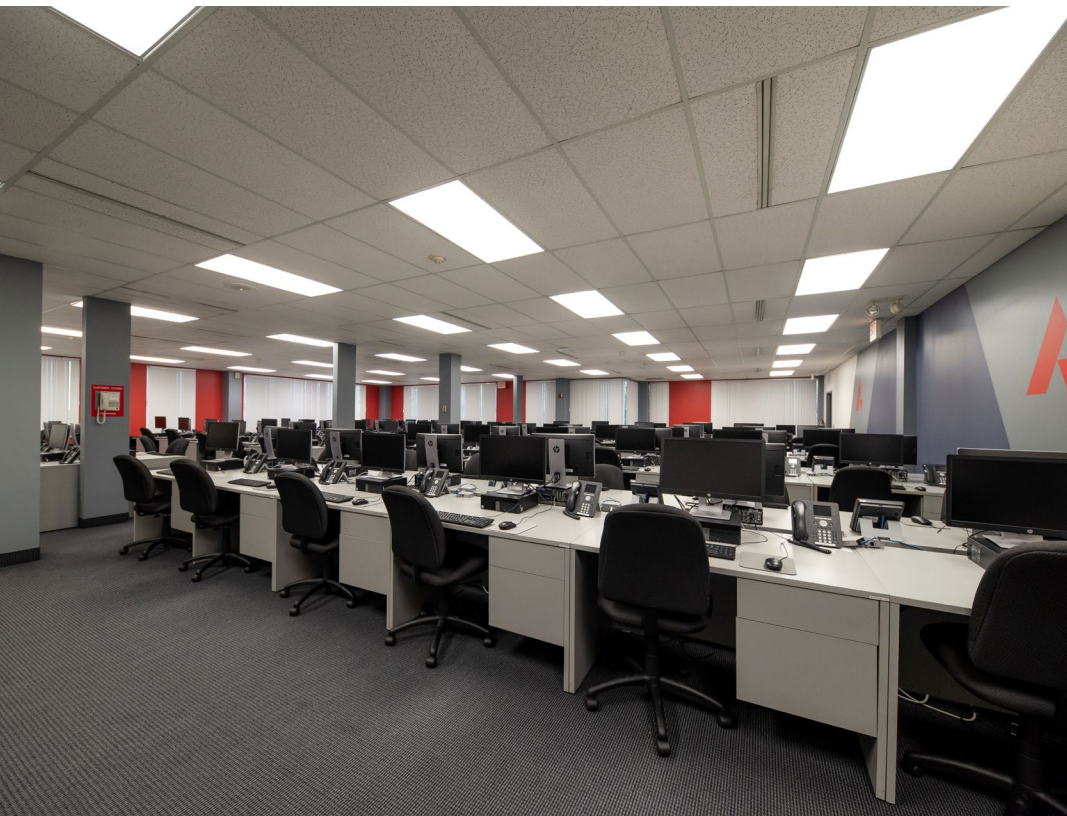
- Under New Ownership and Management
- Shared amenities in neighboring building include fitness center, conference rooms, café area, and an auditorium that are undergoing a customized reprogram
- Proximity to downtown Akron can be advantageous for businesses looking to tap into a larger talent pool and customer base
- The area is well-connected by major highways, including I-77 making it convenient for employees and clients to access

### AVAILABLE SPACE

Suite	SF	Max Contiguous
150	1,752	1,752
300B	2,288	2,288







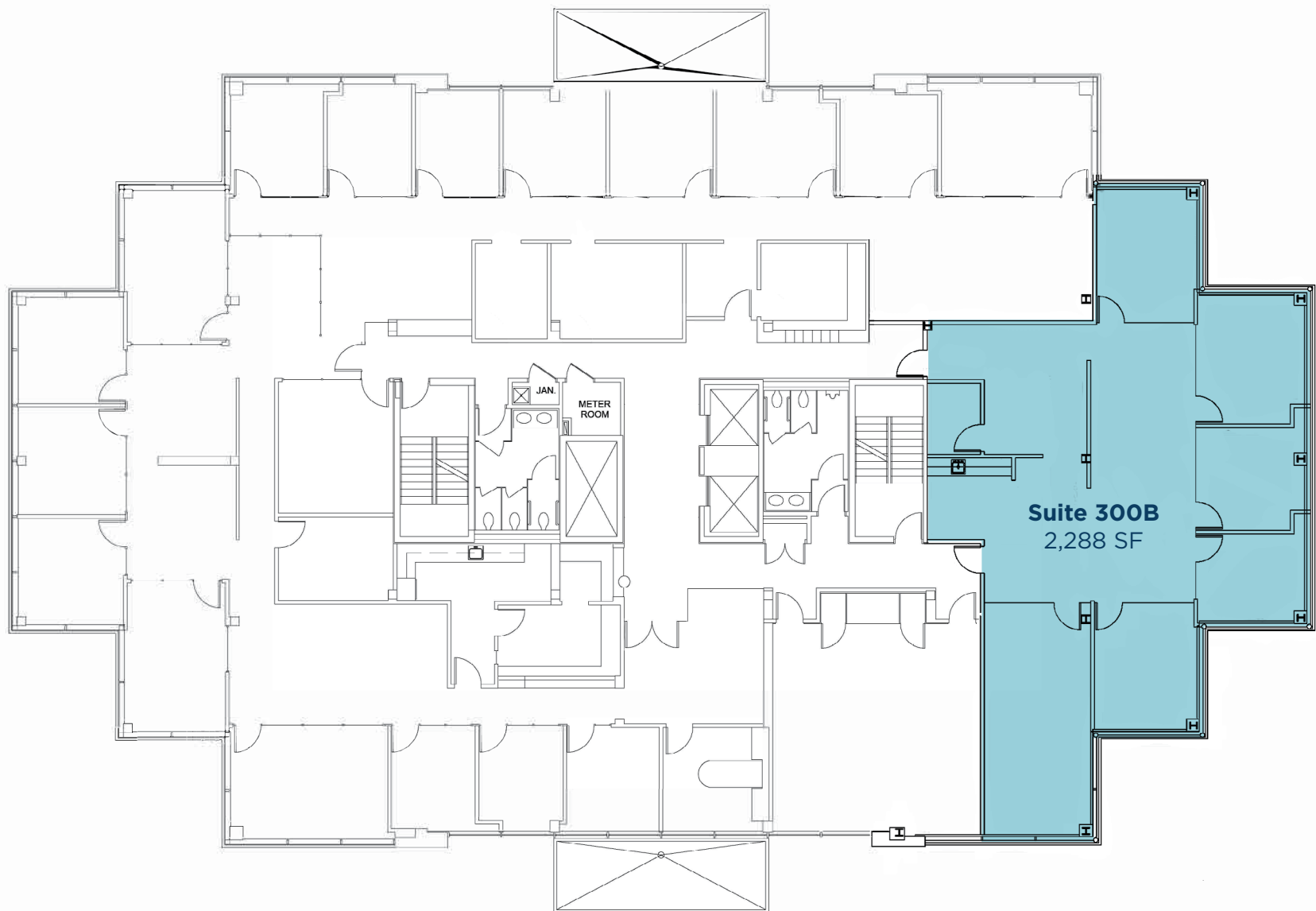


**175 MONTROSE WEST**  
AKRON, OHIO



**FIRST FLOOR**

**175 MONTROSE WEST**  
AKRON, OHIO



**THIRD FLOOR**





**RICO PIETRO, SIOR**  
Principal  
rpietro@crescorealestate.com  
+1 216 525 1473

**MAUREEN ANTER-RESSLER**  
Vice President  
mressler@crescorealestate.com  
+1 216 525 1494

**ISABEL DEROBERTS**  
Vice President  
ideroberts@crescorealestate.com  
+1 216 232 4103

**KIRSTEN PARATORE**  
Senior Associate  
kparatore@crescorealestate.com  
+1 216 525 1491

**ROBBY MARTINELLI**  
Associate  
rmartinelli@crescorealestate.com  
+1 216 232 4104

Cushman & Wakefield | CRESCO Real Estate 6100 Rockside Woods Blvd, Suite 200, Cleveland, OH 44131 crescorealestate.com

©2025 Cushman & Wakefield. All rights reserved. The information contained in this communication is strictly confidential. This information has been obtained from sources believed to be reliable but has not been verified. NO WARRANTY OR REPRESENTATION, EXPRESS OR IMPLIED, IS MADE AS TO THE CONDITION OF THE PROPERTY (OR PROPERTIES) REFERENCED HEREIN OR AS TO THE ACCURACY OR COMPLETENESS OF THE INFORMATION CONTAINED HEREIN, AND SAME IS SUBMITTED SUBJECT TO ERRORS, OMISSIONS, CHANGE OF PRICE, RENTAL OR OTHER CONDITIONS, WITHDRAWAL WITHOUT NOTICE, AND TO ANY SPECIAL LISTING CONDITIONS IMPOSED BY THE PROPERTY OWNER(S). ANY PROJECTIONS, OPINIONS OR ESTIMATES ARE SUBJECT TO UNCERTAINTY AND DO NOT SIGNIFY CURRENT OR FUTURE PROPERTY PERFORMANCE.