



Central

Availabilites

8148
Ronson Rd.

8170
Ronson Rd.

4818 & 4818.5
Ronson Ct.

8222 & 8224
Ronson Rd.

4819 & 4819.5
Ronson Ct.

8274 & 8276
Ronson Rd.

8254 & 8256
Ronson Rd.

8248 & 8250
Ronson Rd.

8145
Ronson Rd.

Fitness
Tenant Lounge &
Conference Space

8205
Ronson Rd.

Outdoor
People Space

8195
Ronson Rd.

8245
Ronson Rd.

Outdoor
People Space

8290
Vickers St.

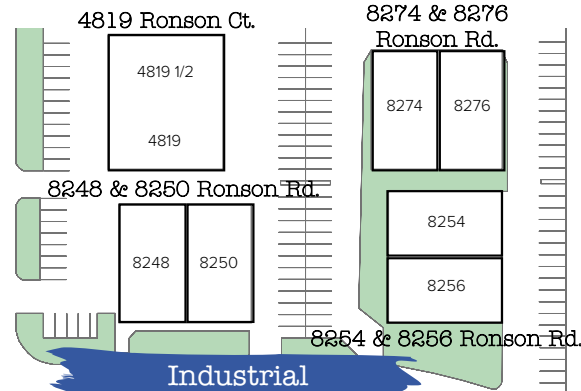
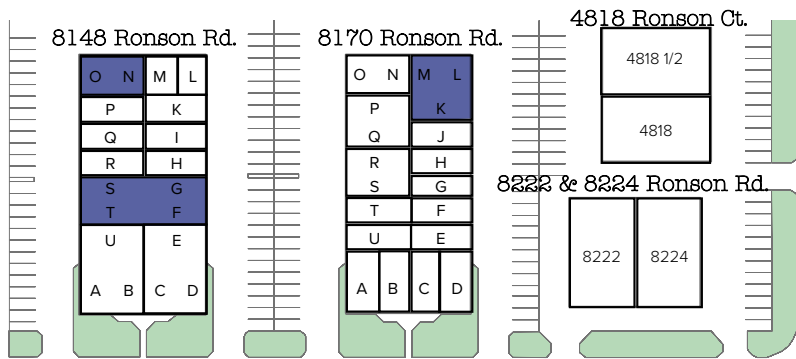
8340
Vickers St.

8380
Vickers St.

Outdoor
People Space

8250
Vickers St.

Availability



Industrial

1. 8148 Ronson Rd - F,G,S,T - 3,920 SF - available now
2. 8148 Ronson Rd - N,O - 1,520 SF - available now
3. 8170 Ronson Rd - K,L,M - 2,500 SF - available now
4. 8195 Ronson Rd - F - 1,620 SF - available with 30 days' notice
5. 8340 Vickers St - F - 1,620 SF - available now
6. 8340 Vickers St - H,I - 2,430 SF - available now
7. 8380 Vickers St - A,B - 3,240 SF - available now
8. 8380 Vickers St - H,I - 3,132 SF - available now

Flex

1. 8290 Vickers St - A,B - 2,025 SF - available now
2. 8245 Ronson Rd - H,I - 3,240 SF - available now
3. 8250 Vickers St - E - 1,780 SF - available now

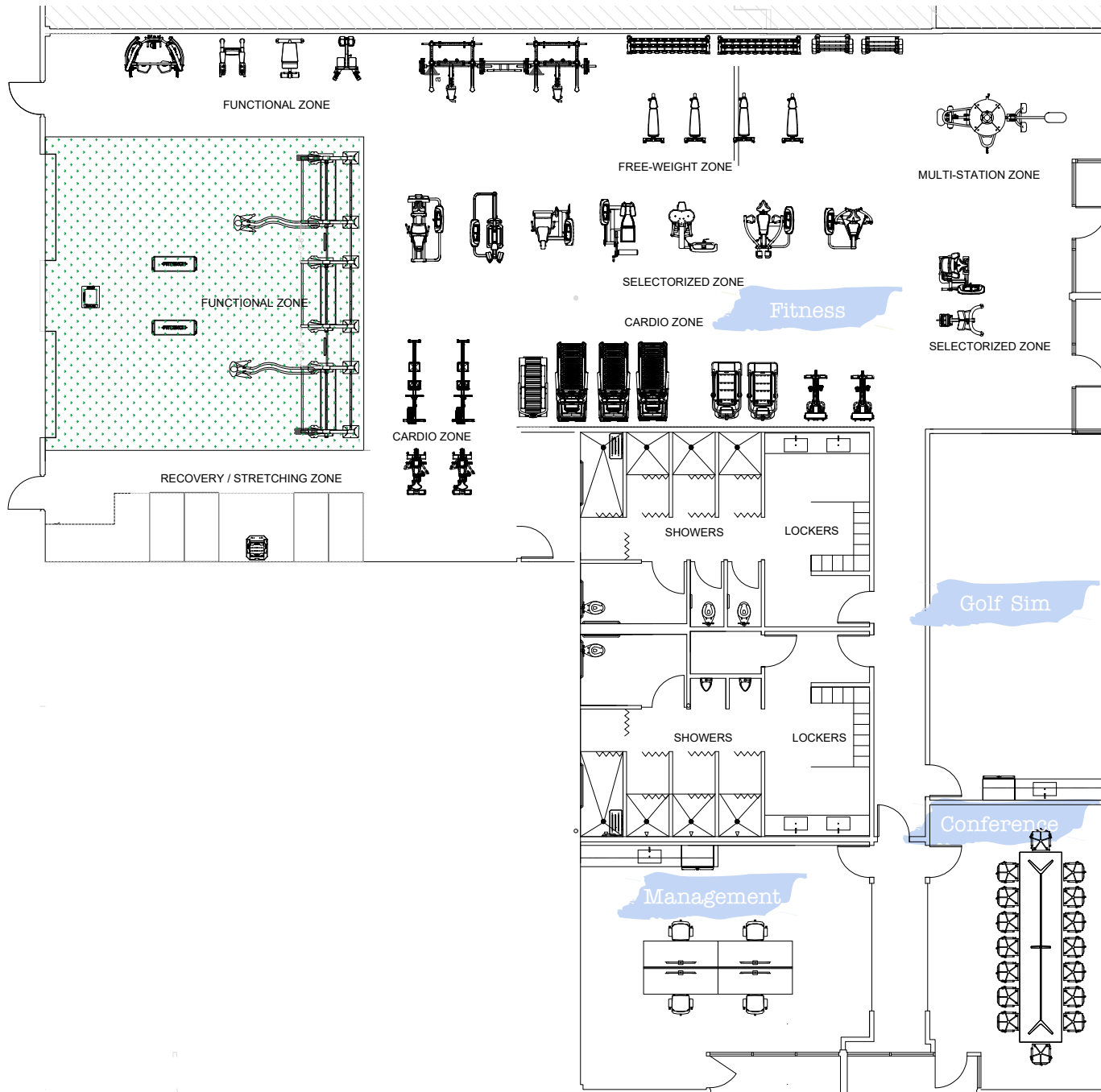
Office

1. 8250 Vickers St - F,G - 1,760 SF - available in 60 days
2. 8245 Ronson Rd - A - 820 SF - available in 60 days
3. 8245 Ronson Rd - B - 800 SF - available in 60 days
4. 8245 Ronson Rd - C - 800 SF - available in 60 days
5. 8245 Ronson Rd - D - 820 SF - available in 60 days

*Amenities



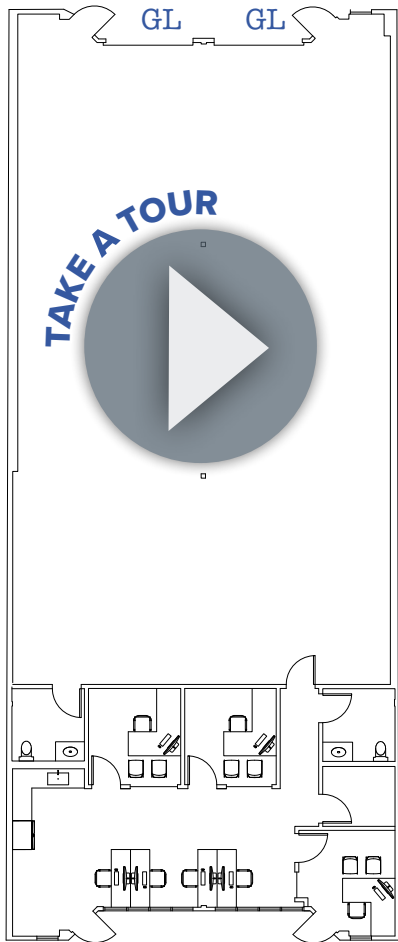
Amenities



8148 Ronson Rd Suite F,G,S,T

- Spec Suite now complete
- 3,920 SF

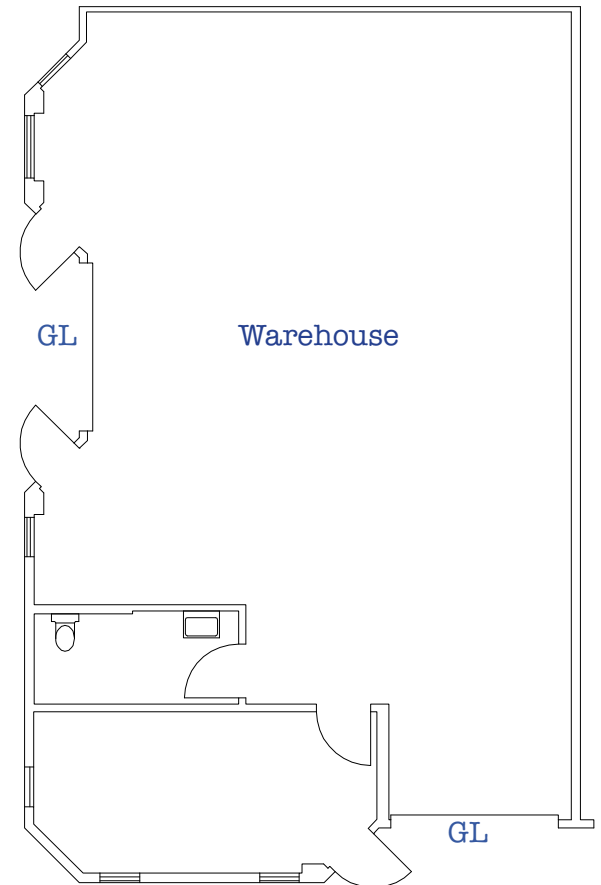
Spec Suite



8148 Ronson Rd Suite N,O

- Available now
- 1,520 SF

As-Is Plan

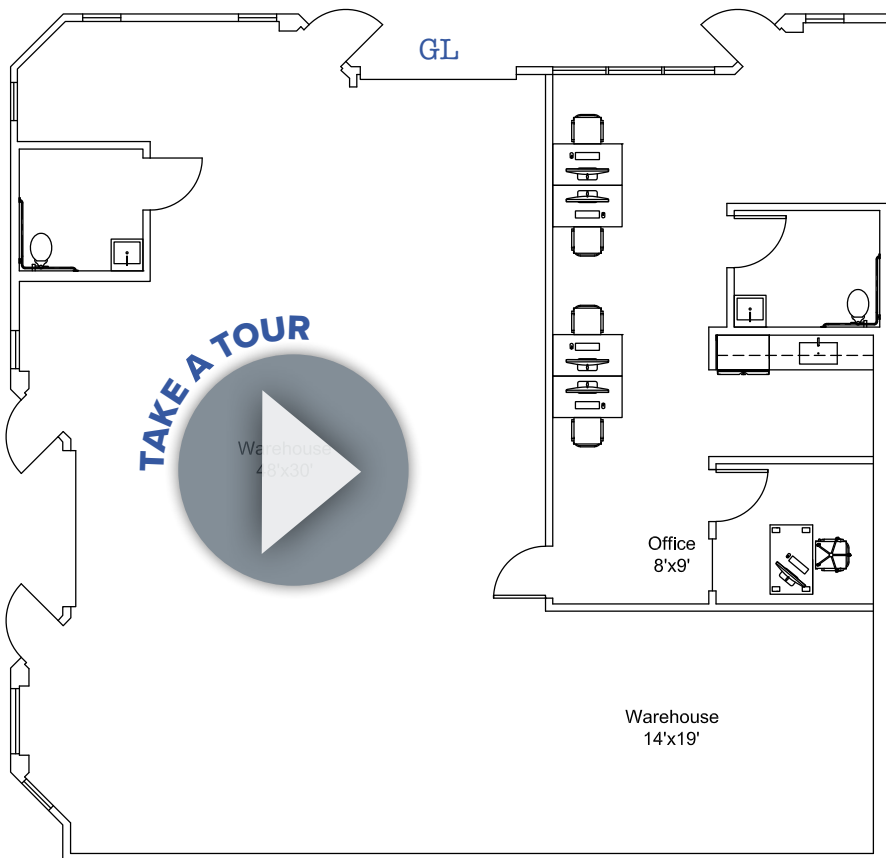


Industrial

8170 Ronson Rd Suite K, L, M

- Spec Suite now complete
- 2,500 SF

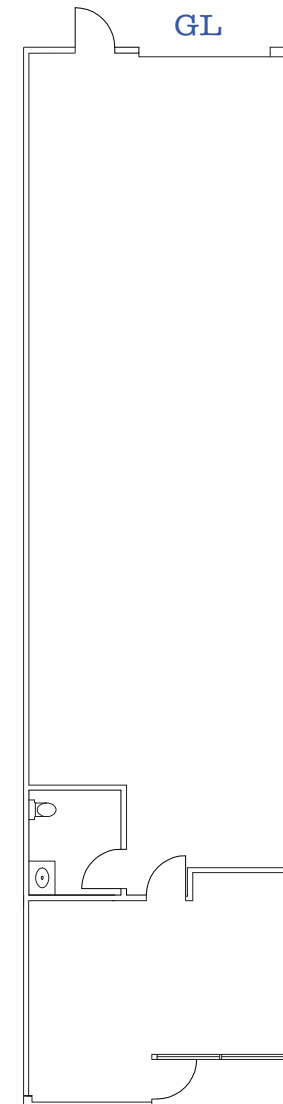
Spec Suite



8195 Ronson Rd Suite F

- Available with 30 days' notice
- 1,620 SF

As-Is Plan

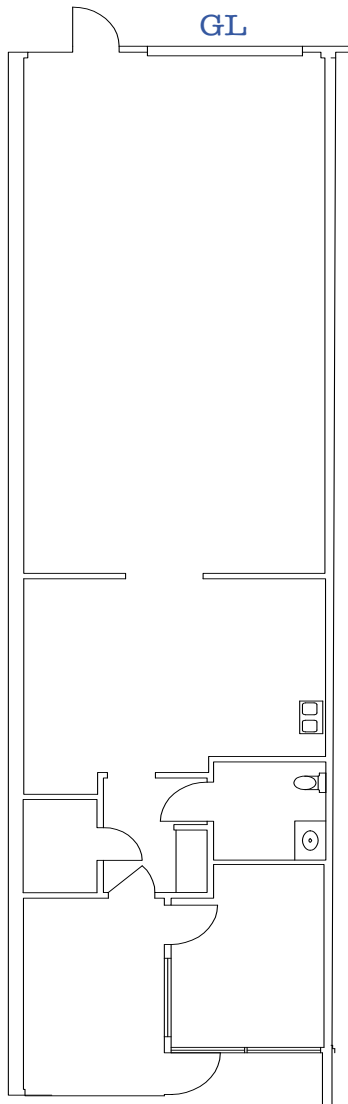


Industrial

8340 Vickers St Suite F

- Available now
- 1,620 SF

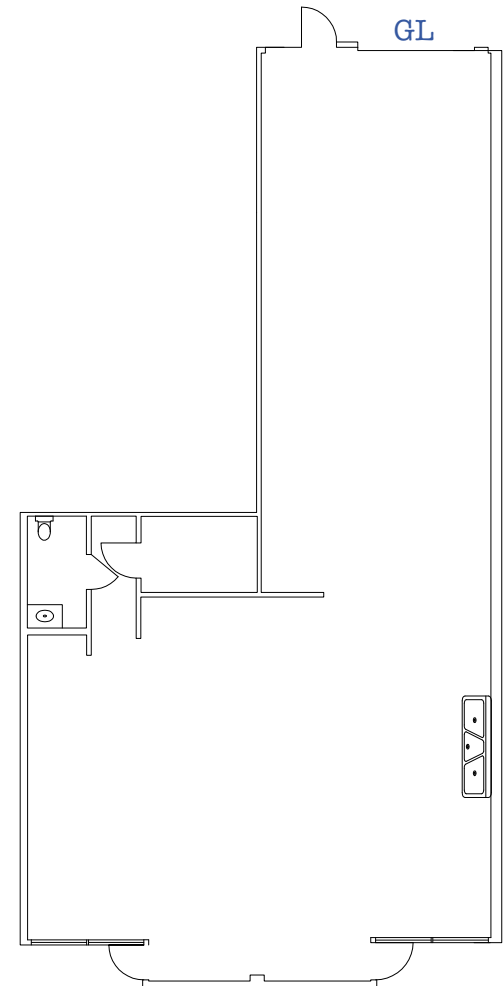
As-Is Plan



8340 Vickers St Suite H,I

- Available now
- 2,430 SF

As-Is Plan

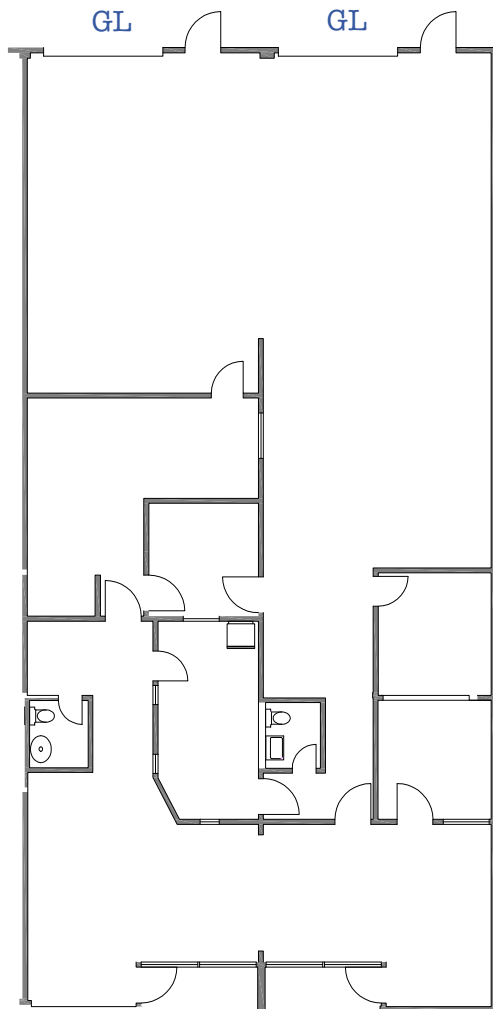


Industrial

8380 Vickers St Suite A,B

- Available now
- 3,240 SF

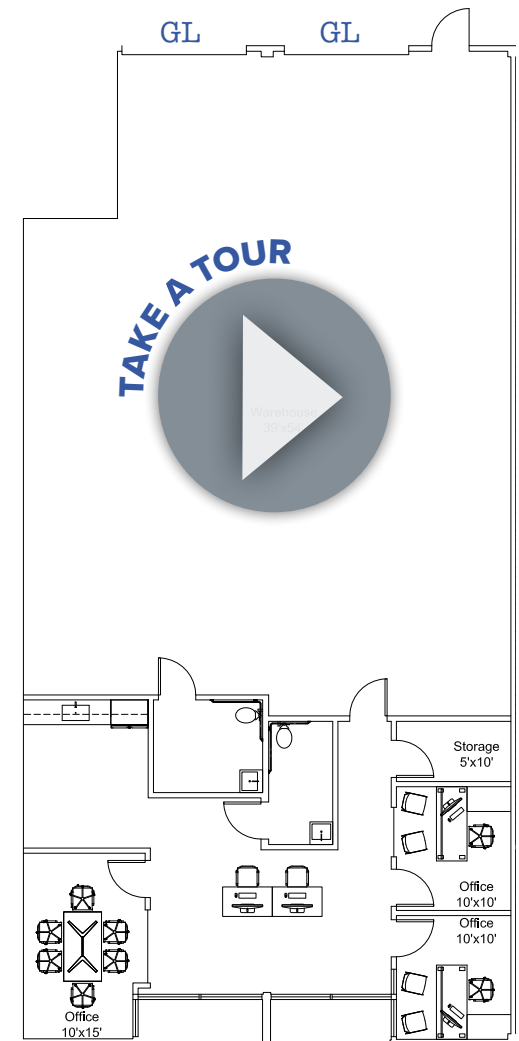
As-Is Plan



8380 Vickers St Suite H,I

- Spec Suite now complete
 - 3,132 SF

Spec Suite



Industrial

8290 Vickers St Suite A,B

- Spec Suite now complete
- 2,025 SF

Spec Suite



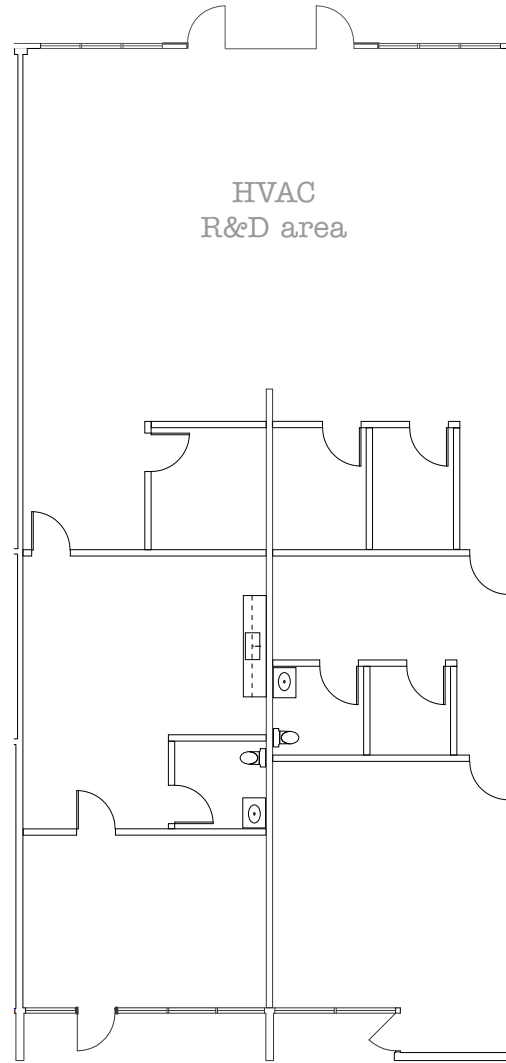
Flex

8245 Ronson Rd

Suite H,I

- Available now
- 3,240 SF
- Potential to reinstall 2 GL doors.
Doors are currently glassed in.

As-Is Plan



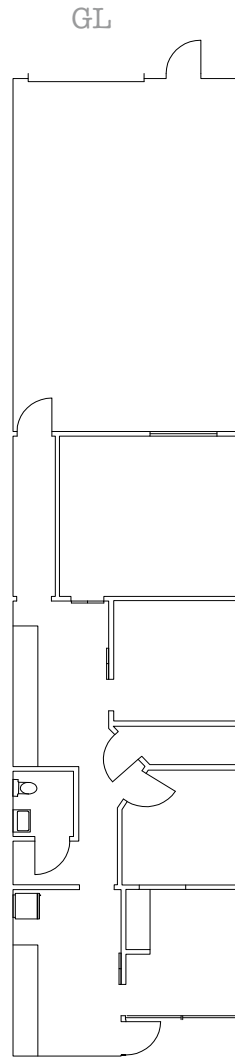
Flex

8250 Vickers St

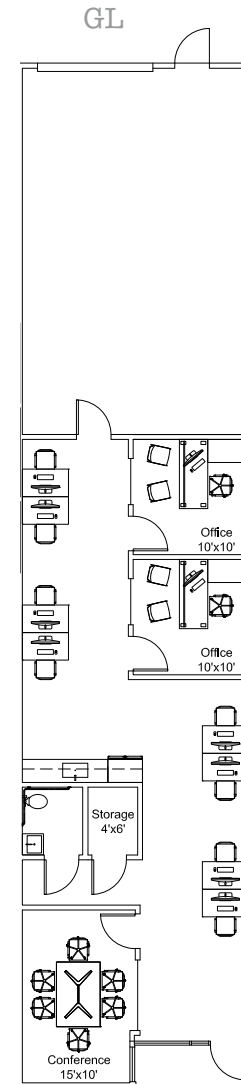
Suite E

- Available now
- Proposed Spec Suite
- 1,780 SF

As-Is Plan



Spec Suite



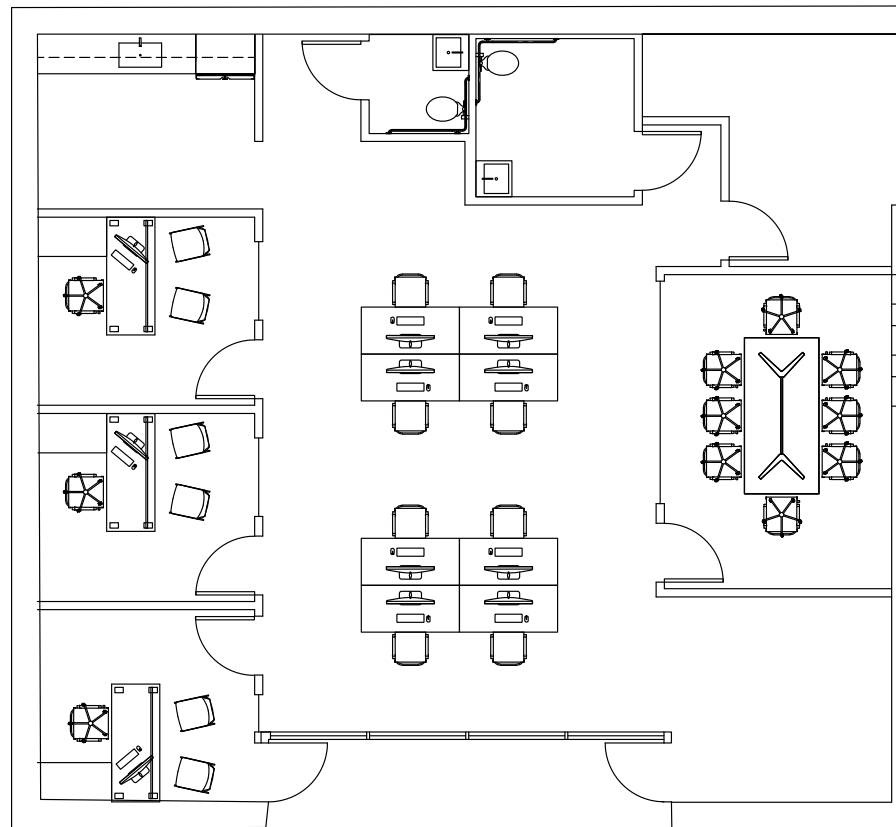
Flex

8250 Vickers St

Suite F,G

- Available in 60 days
- Proposed Spec Suite
- 1,760 SF

Spec Suite



Office

8245 Ronson Rd Suite A

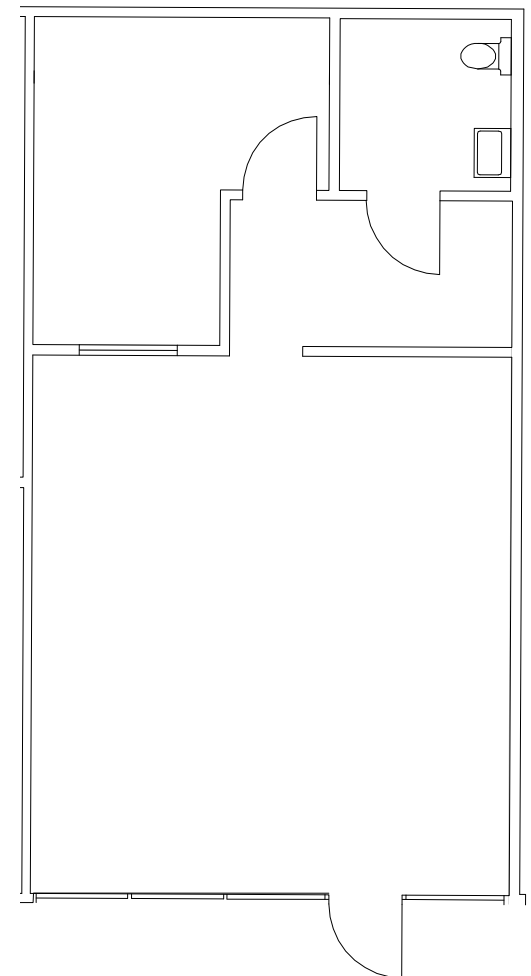
- Available in 60 days
- 820 SF
- Contiguous up to 3,240 SF

Floor Plan Pending

8245 Ronson Rd Suite B

- Available in 60 days
 - 800 SF
- Contiguous up to 3,240 SF

As-Is Plan

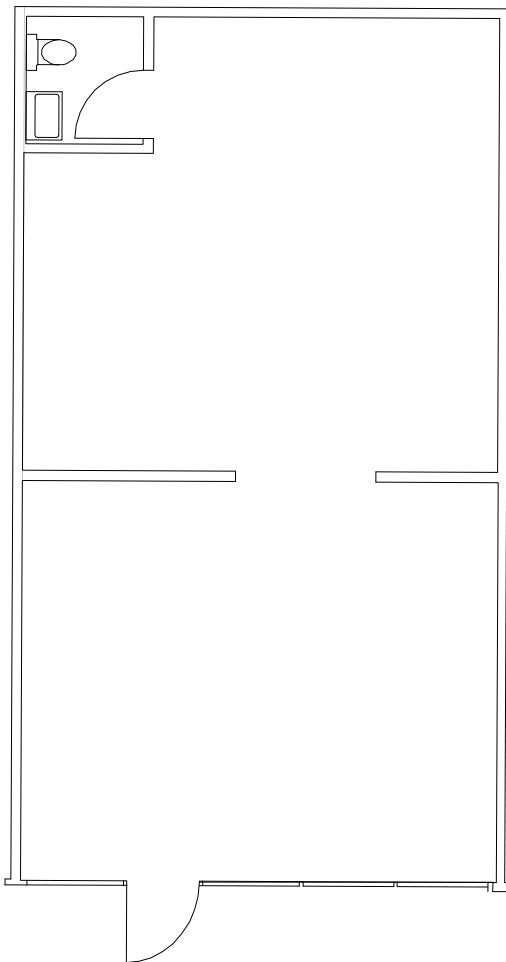


Office

8245 Ronson Rd Suite C

- Available in 60 days
- 800 SF
- Contiguous up to 3,240 SF

As-Is Plan



Office

8245 Ronson Rd Suite D

- Available in 60 days
- 820 SF
- Contiguous up to 3,240 SF

Floor Plan Pending



CUSHMAN &
WAKEFIELD

RYAN DOWNING, SIOR

+1 858 546 5416

ryan.downing@cushwake.com

CA Lic 01955032

BRANT ABERG, SIOR

+1 858 546 5464

brant.aberg@cushwake.com

CA Lic 01773573

MICHAEL CASSOLATO

+1 858 546 5434

michael.cassolato@cushwake.com

CA Lic 01893847

ANNIKA LUND

+1 858 558 5640

annika.lund@cushwake.com

CA Lic 02228297

©Cushman and Wakefield. All rights reserved. The information contained in this communication is strictly confidential. This information has been obtained from sources believed to be reliable but has not been verified. No warranty or representation, express or implied, is made as to the condition of the property (or properties) referenced herein or as to the accuracy or completeness of the information contained herein, and same is submitted subject to errors, omissions, change of price, rental or other conditions, withdrawal without notice, and to any special listing conditions imposed by the property owner(s). Any projections, opinions or estimates are subject to uncertainty and do not signify current or future property performance.

CRUZAN

