

1540

1555

RIVER PARK DRIVE  
SACRAMENTO, CA

## PROPERTY HIGHLIGHTS

- Completely renovated and revitalized office park
- Excellent Proximity to numerous retail & dining amenities
- Great access to Business 80 & Highway 160
- Conference facilities
- Spaces built out for immediate occupancy
- Featured spaces contain private outdoor balconies
- 4.00/1,000 SF Parking Ratio

SPENCER NIELSEN

Director

+1 916 288 4531

spencer.nielsen@cushwake.com

CA LIC #01964163

SEAN MULLEN

Managing Director

+1 916 288 4811

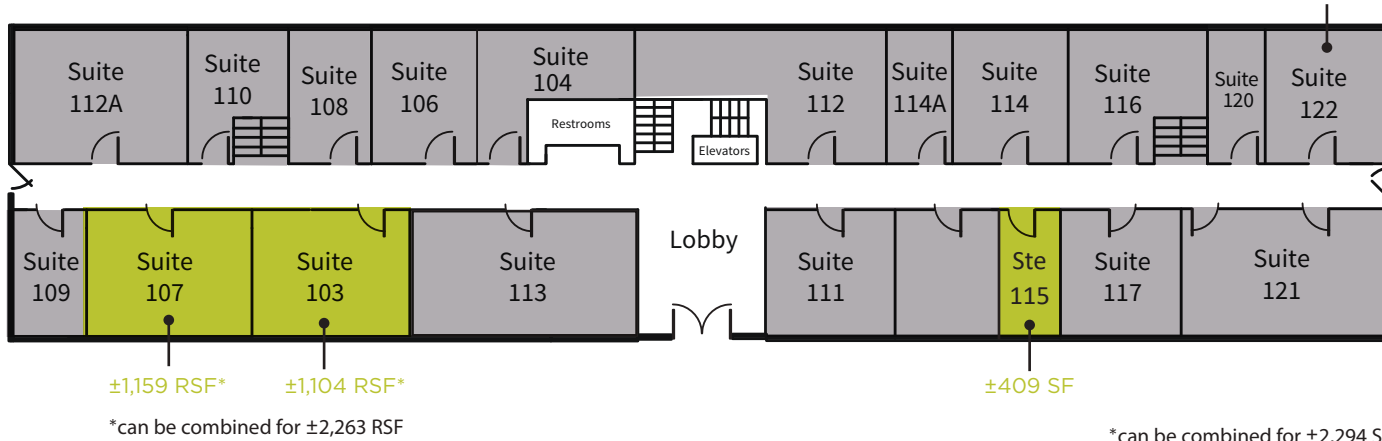
sean.mullen@cushwake.com

CA LIC #01845406

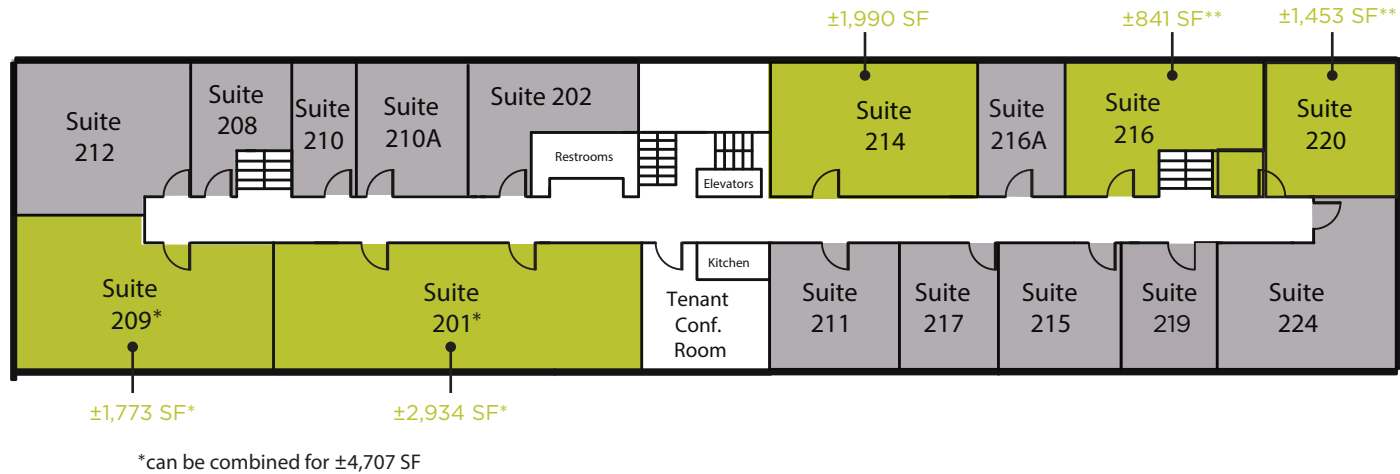


1540 RIVER PARK DRIVE

1ST FLOOR



2ND FLOOR



■ AVAILABLE FOR LEASE

■ LEASED

SPENCER NIELSEN  
 Director  
 +1 916 288 4531  
 spencer.nielsen@cushwake.com  
 CA LIC #01964163

SEAN MULLEN  
 Managing Director  
 +1 916 288 4811  
 sean.mullen@cushwake.com  
 CA LIC #01845406





## PROPERTY PHOTOS



SPENCER NIELSEN  
Director  
+1 916 288 4531  
spencer.nielsen@cushwake.com  
CA LIC #01964163

SEAN MULLEN  
Managing Director  
+1 916 288 4811  
sean.mullen@cushwake.com  
CA LIC #01845406



**CAL EXPO**  
80+ EVENTS PER YEAR  
4M+ ANNUAL VISTIORS

**POINT WEST PLAZA**  
KOHL'S  
OLD NAVY  
HOBBY LOBBY  
FIVE BELOW  
PETCO

**ARDEN MALL**  
MACY'S  
JCPENNEY  
APPLE  
COACH  
MICHAEL KORS  
LULUEMON  
SEASON 52  
SEPHORA  
BANANA REPUBLIC  
FOOT LOCKER  
BJ'S RESTAURANT  
85°C BAKERY

**HBA  
HOWEBOUTARDEN**  
CENTURY THEATRES  
NORDSTROM RACK  
HOMEGOODS  
THE CONTAINER STORE  
STARBUCKS  
CARTERS  
PINKBERRY  
NIKE OUTLET STORE  
MOD PIZZA  
JAMBA JUICE

**PROPERTY**

**MARKET SQUARE**  
BARNES & NOBLE  
CALIFORINA PIZZA KITCHEN  
DSW  
BEST BUY  
DOS COYOTES  
CRUNCH FITNESS  
FEDEX

SPENCER NIELSEN  
Director  
+1 916 288 4531  
spencer.nielsen@cushwake.com  
CA LIC #01964163

SEAN MULLEN  
Managing Director  
+1 916 288 4811  
sean.mullen@cushwake.com  
CA LIC #01845406



SPENCER NIELSEN | DIRECTOR

+1 916 288 4531

[spencer.nielsen@cushwake.com](mailto:spencer.nielsen@cushwake.com)

CA LIC #01964163

SEAN MULLEN | MANAGING DIRECTOR

+1 916 288 4811

[sean.mullen@cushwake.com](mailto:sean.mullen@cushwake.com)

CA LIC #01845406

400 Capitol Mall, Suite 1800

Sacramento, CA 95814

+1 916 288 4800

[cushmanwakefield.com](http://cushmanwakefield.com)

1540