

FOR LEASE | Q4 2025 DELIVERY

Building 1 - 36,000 SF & Building 2 - 36,000 SF



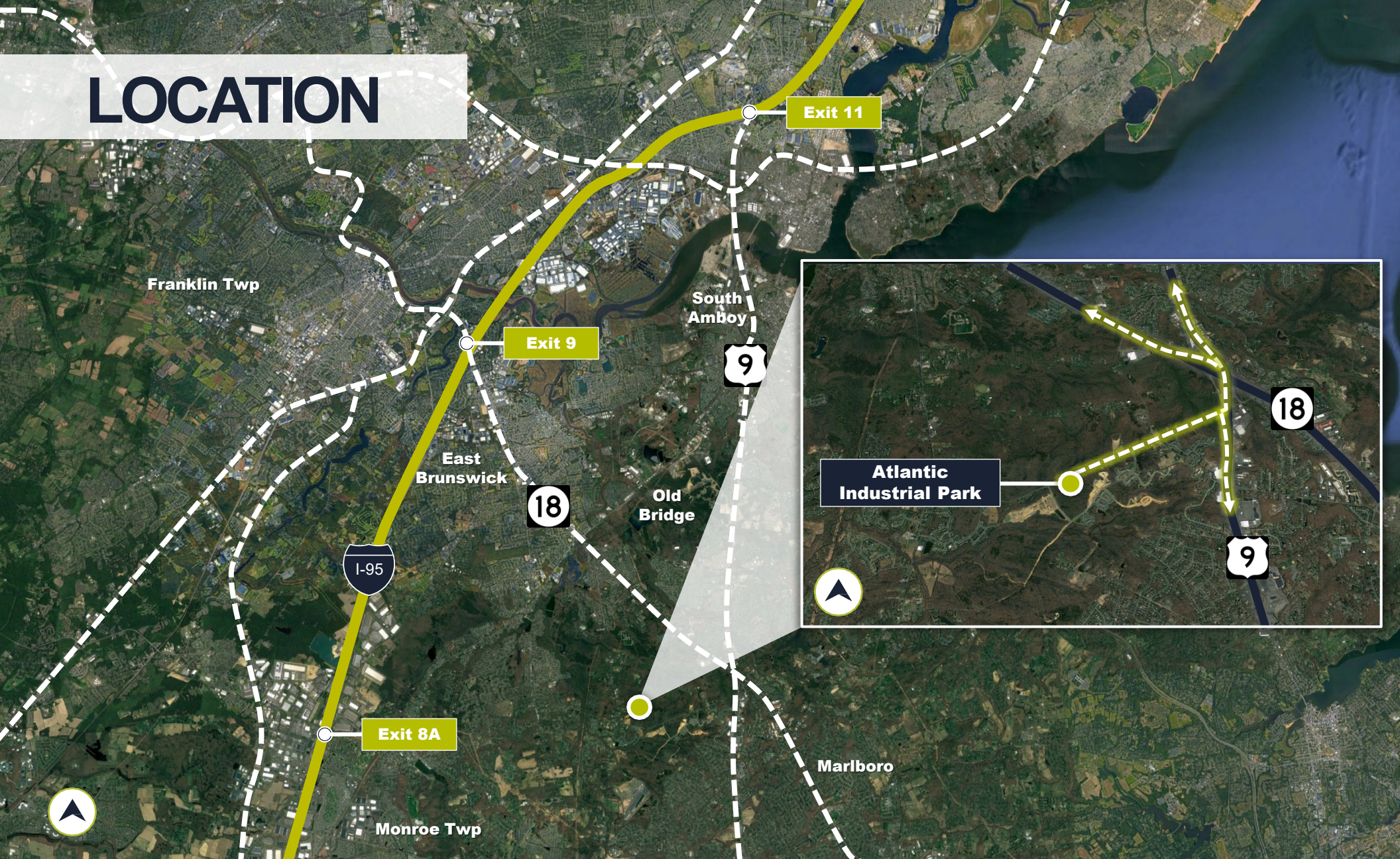
ATLANTIC INDUSTRIAL PARK

428 TEXAS ROAD, OLD BRIDGE, NJ

WALLS ARE UP • CLOSE PROXIMITY TO MAJOR HWYS



LOCATION



2 MILES
TO ROUTE 18

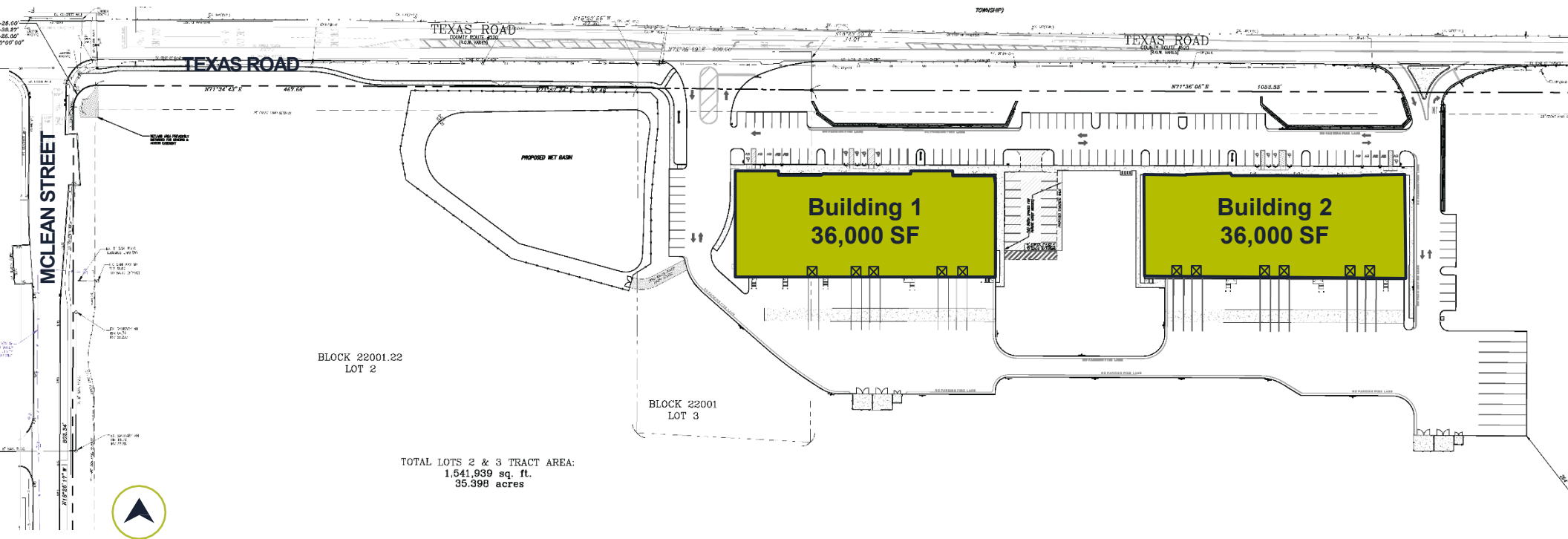
2 MILES
TO ROUTE 9

11 MILES
TO NJ TPKE EXIT 9

14 MILES
TO NJ TPKE EXIT 11

SITE PLAN & SPECIFICATIONS

ATLANTIC INDUSTRIAL PARK| 428 TEXAS ROAD, OLD BRIDGE



Building Size: 36,000 SF (Building 1)
36,000 SF (Building 2)

Car Parking Spaces: 45 Spaces (Building 1)
72 Spaces (Building 2)

Office Area: To Suit

Trailer Parking Spaces: 10 Trailer Spaces

Clear Height: 32'

Building Dimensions: 300' x 120'

Loading: 5 Docks (Building 1)
6 Docks (Building 2)

Taxes: TBD

CONTACT INFORMATION

STAN DANZIG

Stan.Danzig@cushwake.com

+1 201 460 3388

ERIC SCHLETT

Eric.Schlett@cushwake.com

+1 551 804 4747

KIMBERLY BACH

Kimberly.Bach@cushwake.com

+1 732 403 7714

MIKE POPPLETON

Mike.Poppleton@cushwake.com

+1 315 396 2474

