



**CUSHMAN &
WAKEFIELD**
Atlantic



FOR LEASE

**50 DRISCOLL CRESCENT
MONCTON, NB**

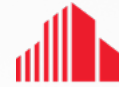
+/- 593 SF

**SECOND FLOOR
PROFESSIONAL OFFICE
SUITE**

77 Vaughan Harvey Blvd
Suite 402
Moncton, NB
Main +1 506 387 6925
cwatlantic.com

FOR LEASE

50 Driscoll Crescent Moncton, New Brunswick



**CUSHMAN &
WAKEFIELD**
Atlantic



2ND FLOOR PROFESSIONAL OFFICE SUITES

Property Highlights

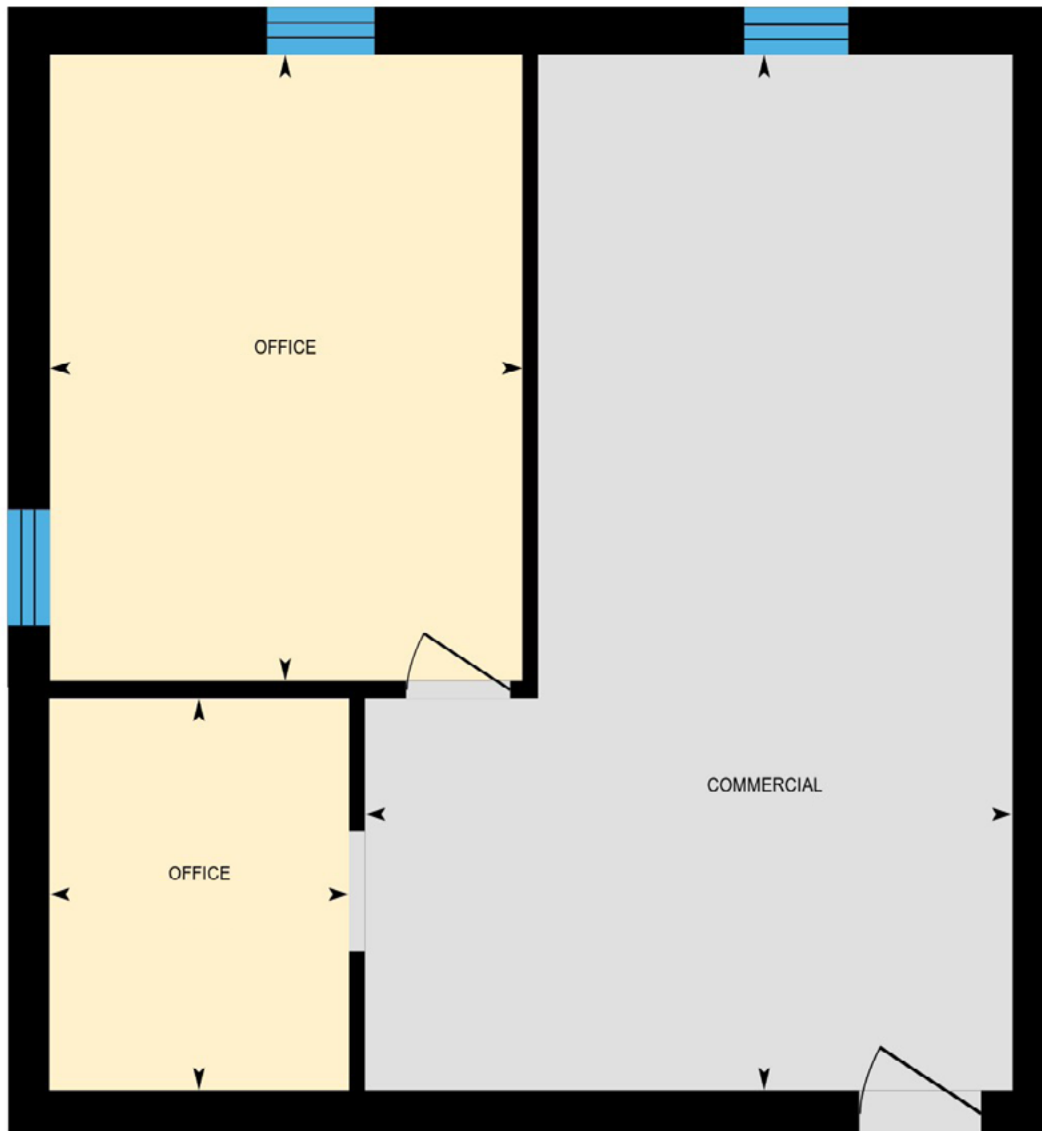
Ideal opportunity for office tenant in central location in the Moncton Industrial Park.

- 2 storey professional office building
- Natural light throughout
- Excellent street frontage
- Site visibility
- Pylon sign signage options
- Ample on-site parking
- Easy access to nearby bus route
- Heat/power is included; tenant is responsible for suite cleaning



Contact

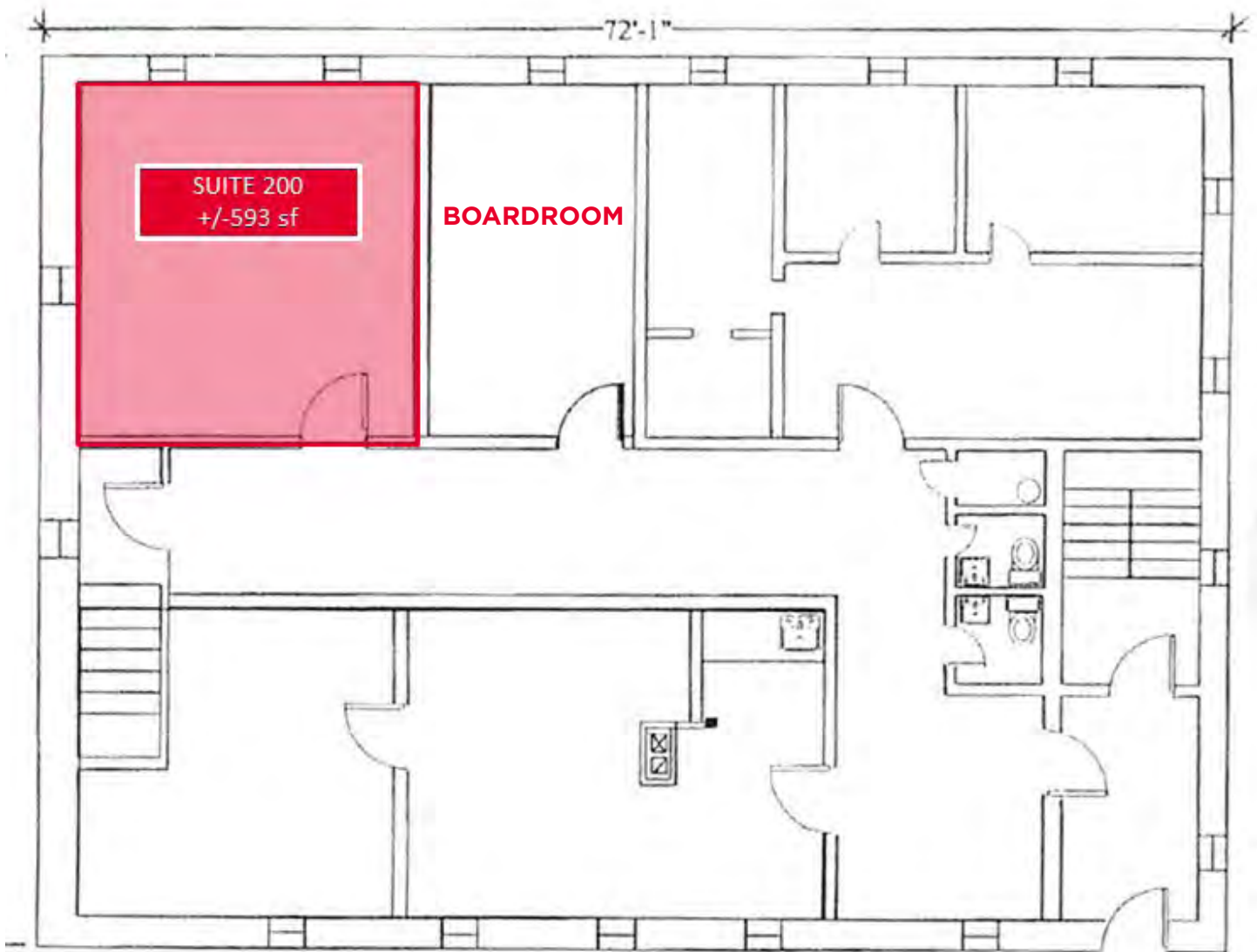
DONNA GREEN
Vice President
+1 506 387 6930
dgreen@cwatlantic.com



3D VIRTUAL TOUR

Contact

DONNA GREEN
Vice President
+1 506 387 6930
dgreen@cwatlantic.com



Contact

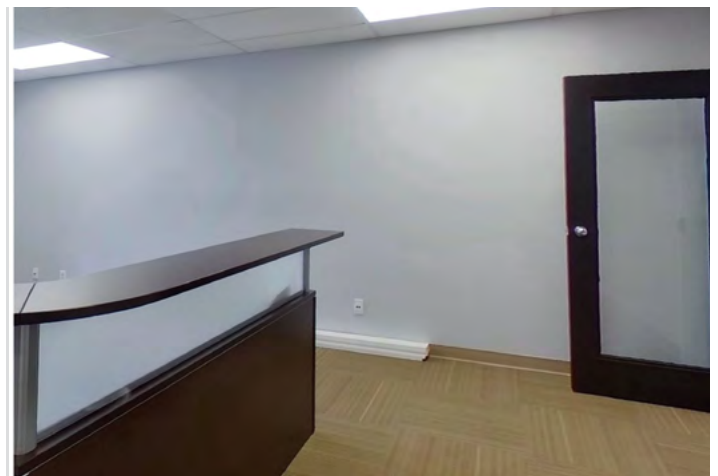
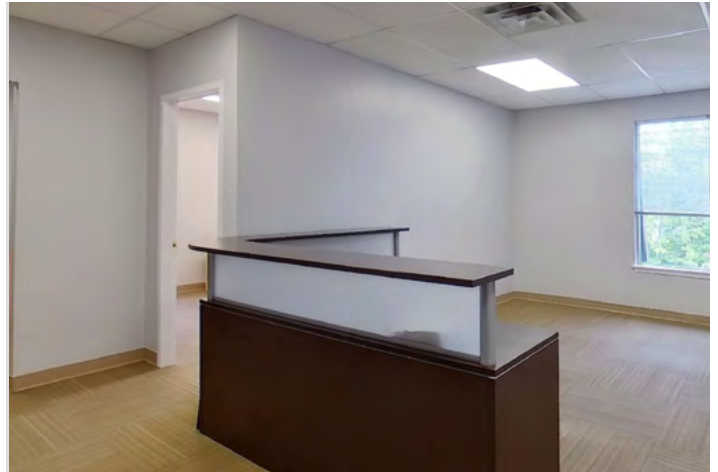
DONNA GREEN
Vice President
+1 506 387 6930
dgreen@cwatlantic.com

SECOND FLOOR

Suite 200 | +/- 593 sf | \$925 Monthly*

Beautiful corner suite features an open concept area, one private office, and small meeting room/storage area.

*Net lease structure. Additional rent subject to annual adjustments



Contact

DONNA GREEN
Vice President
+1 506 387 6930
dgreen@cwatlantic.com



Location Information

50 Driscoll is a two storey professional building in the heart of the Moncton Industrial Park with convenient access to major arteries throughout the city and nearby all amenities. The central location is ideal for many business uses including professional office, service commercial, and many other businesses.



Located in the
Moncton
Industrial Park



5km to
Downtown
Moncton



Turnkey Spaces



Ample onsite
parking



Easy access to
major roads

Contact

DONNA GREEN
Vice President
+1 506 387 6930
dgreen@cwatlantic.com