

CUSHMAN &  
WAKEFIELD  
Atlantic

MAISON du COMMERCE HOUSE

# COMMERCE HOUSE

232-236 ST. GEORGE STREET  
MONCTON NB



The image shows the interior of a modern office building lobby. The ceiling has large, white, curved panels. The walls are a light beige color, with a section of wood paneling on the left. A sign on the wood paneling reads "NO LOITERING PERMITTED". To the right, there are two colorful abstract paintings on the wall and a white reception desk. The floor is made of large, light-colored square tiles. A blue rectangular box is overlaid on the center of the image, containing the title and two paragraphs of text.

# WELCOME TO THE COMMERCE HOUSE

Nestled on the outskirts of Moncton's downtown core you can find the Commerce House, a high-profile multi-tenant office building. The building is recognized for its diverse selection of suites, currently catering to a wide selection of businesses. Its Secondary Business District zoning allows this building to accommodate various uses such as professional office, retail business, physiotherapy, service commercial and many others.

The Commerce House features a ground floor cafe that is popular among both tenants and pedestrians. Situated along the bus route, the building is conveniently located within walking distance of the city's top restaurants, shops, and parks.

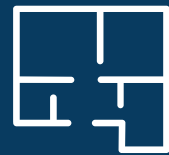


# PROPERTY HIGHLIGHTS

Welcome to the bustling heart of Moncton, where The Commerce House stands tall as a prestigious 5-storey office building showcased on the vibrant St. George Street. With expansive perimeter windows, this Moncton landmark invites abundant natural light to illuminate its suites. The building boasts a grand and secure lobby, two elevators seamlessly connecting each floor, and a boardroom available for all tenants to use free of charge. The Commerce House offers an ideal setting for businesses seeking a prime location.



**\$18.00 PSF**  
**GROSS (Office Suites)**



**782 - 1,678 SF**  
**AVAILABLE**



**COMPLIMENTARY**  
**BOARDROOM**

# OFFICE SPACE



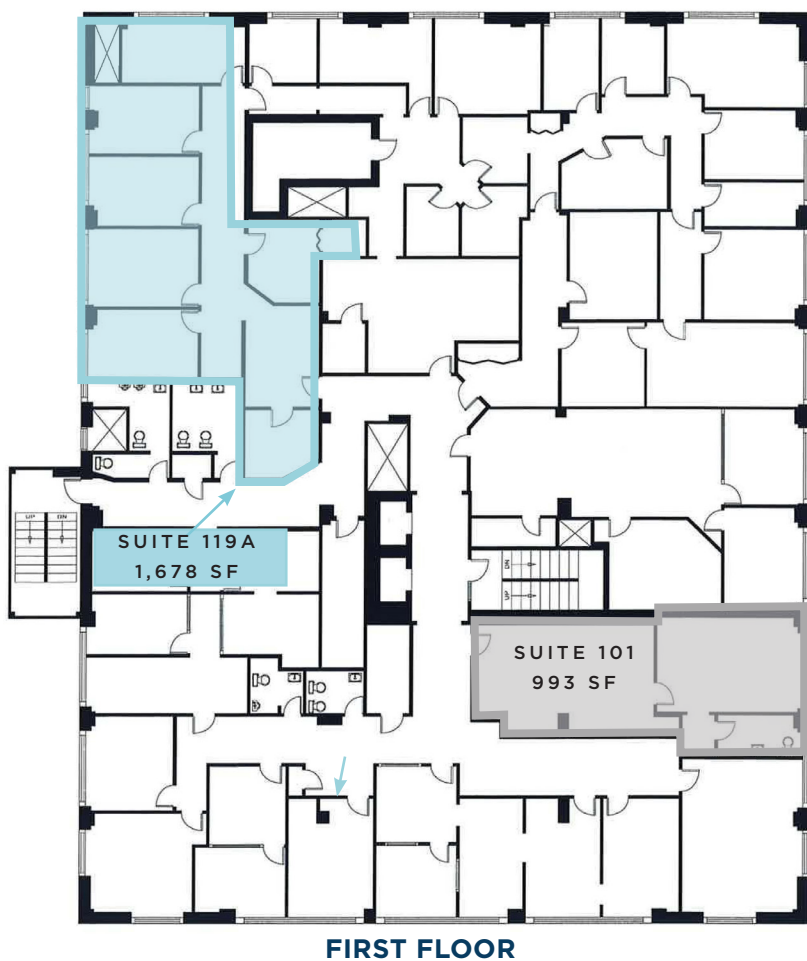
## LEASE RATE

\$18.00 psf Gross



## SUITE LAYOUTS

Open concept spaces and built-out offices with the possibility to combine suites.



Unit	Size
21	782 sf (available April 1)
101	993 sf
119A	1,678 sf

- **Suite 21:** Features entrance/reception area followed by three private offices. **Available April 1**
- **Suite 101:** Features a large front reception with storage and a large private window office with in suite bathroom.
- **Suite 119A:** Private window offices and meeting rooms with ample storage.

# FLOOR PLANS



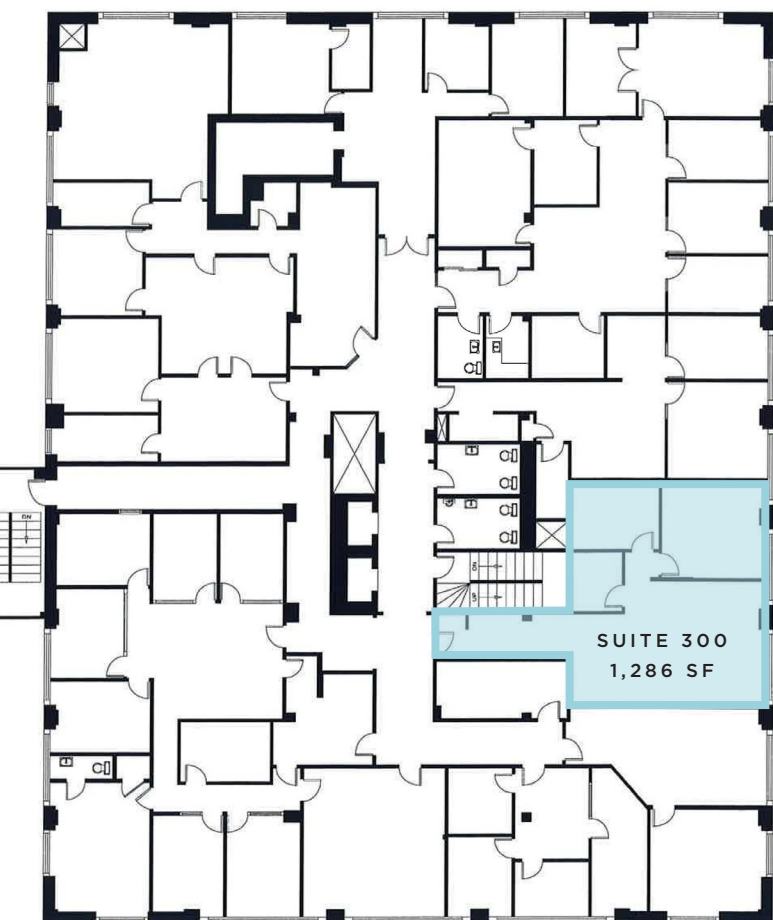
## LEASE RATE

\$18.00 psf Gross

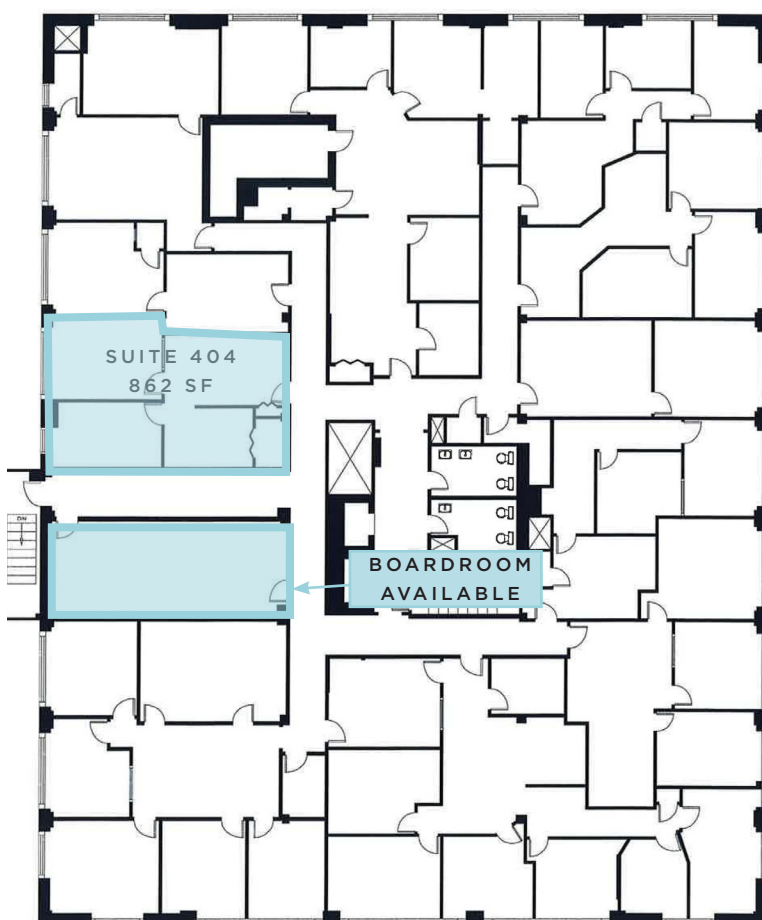


## SUITE LAYOUTS

Open concept spaces and built-out offices with the possibility to combine suites



THIRD FLOOR



FOURTH FLOOR

Unit	Size
300	1,286 sf
404	862 sf (available April 1)

- **Suite 300:** Large open reception/work area leading to two private window offices and storage area.
- **Suite 404:** Three private offices with a welcoming entrance area and ample storage. **Available April 1**
- **Boardroom:** The boardroom on the fourth floor is available for all tenants to use free of charge.

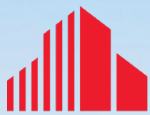


# EXPERIENCE THE COMMERCE HOUSE

**PRIVATE OFFICES, OPEN CONCEPT  
SPACE, BUILT-OUT OFFICES**







**CUSHMAN &  
WAKEFIELD**

Atlantic

## CONTACT INFO

**Donna Green**

Vice President

+1 506 387 6930

[dgreen@cwatlantic.com](mailto:dgreen@cwatlantic.com)

[cushmanwakefield.com](https://cushmanwakefield.com)

MAISON du COMMERCE HOUSE



©2024 Cushman & Wakefield. All rights reserved. The information contained in this communication is strictly confidential. This information has been obtained from sources believed to be reliable but has not been verified. NO WARRANTY OR REPRESENTATION, EXPRESS OR IMPLIED, IS MADE AS TO THE CONDITION OF THE PROPERTY (OR PROPERTIES) REFERENCED HEREIN OR AS TO THE ACCURACY OR COMPLETENESS OF THE INFORMATION CONTAINED HEREIN, AND SAME IS SUBMITTED SUBJECT TO ERRORS, OMISSIONS, CHANGE OF PRICE, RENTAL OR OTHER CONDITIONS, WITHDRAWAL WITHOUT NOTICE, AND TO ANY SPECIAL LISTING CONDITIONS IMPOSED BY THE PROPERTY OWNER(S). ANY PROJECTIONS, OPINIONS OR ESTIMATES ARE SUBJECT TO UNCERTAINTY AND DO NOT SIGNIFY CURRENT OR FUTURE PROPERTY PERFORMANCE.