

TENANT INCENTIVE

YEAR 1
PROMO RATE:
\$1.25 PSF NNN

2151 LAS PALMAS[®]

CARLSBAD, CALIFORNIA 92011



TYLER STEMLEY
858.431.3841
tyler.stemley@cushwake.com

CA Lic. 02003867

JACK TICE
619.500.7626
jack.tice@cushwake.com

CA Lic. 02161178

BRANT ABERG, SIOR
858.546.5464
brant.aberg@cushwake.com

CA Lic. 01773573

12830 El Camino Real, Suite 100,
San Diego, CA 92130
P 858.546.5400 / F 858.630.6320
cushmanwakefield.com



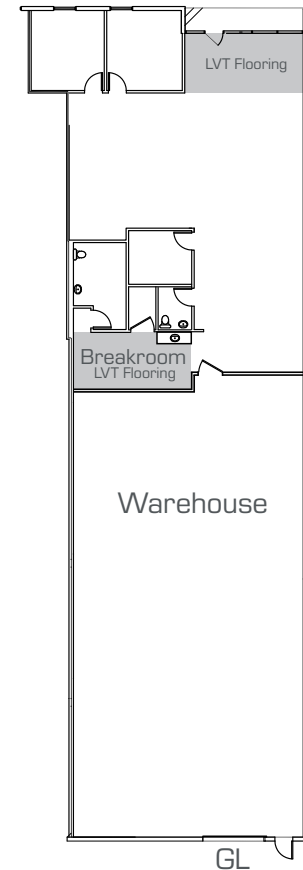
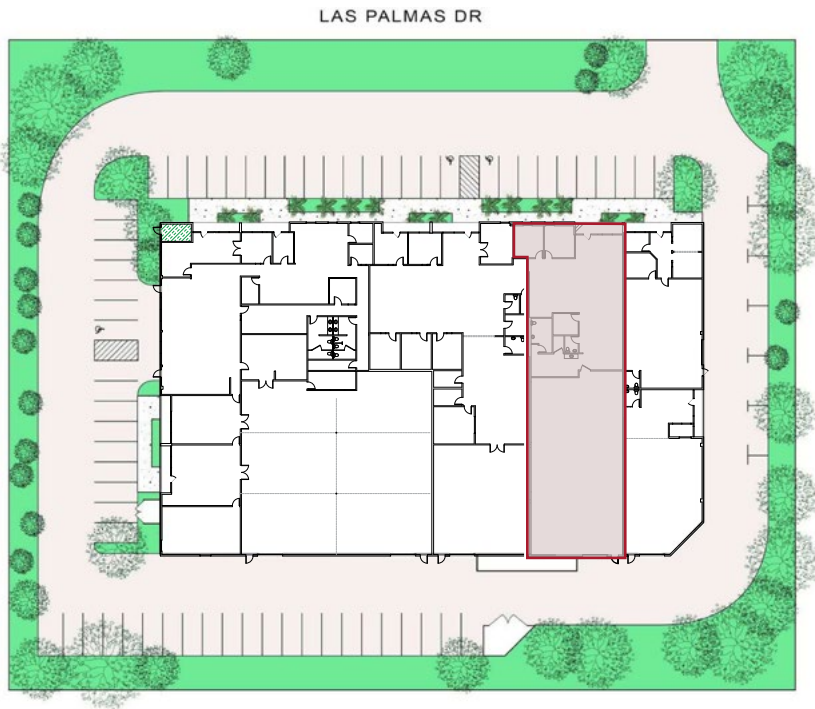
2151 LAS PALMAS^{gr}

CARLSBAD, CALIFORNIA 92011

PROPERTY FEATURES

- Multi-Tenant flex building totalling 31,387 square feet
- 2.1/1,000 parking ratio
- Built in 1981
- 18' warehouse clearance

SUITE	SF	RATE	COMMENTS
Suite C	5,575	\$1.25 NNN* (NNNs = ±\$0.50 PSF)	{3} Private offices, open office, breakroom with kitchenette, storage, {2} restrooms, balance warehouse, {1} grade level door. Available Now. * 1st year promo rate



TYLER STEMLEY
858.431.3841
tyler.stemley@cushwake.com

CA Lic. 02003867

JACK TICE
619.500.7626
jack.tice@cushwake.com

CA Lic. 02161178

BRANT ABERG, SIOR
858.546.5464
brant.aberg@cushwake.com

CA Lic. 01773573

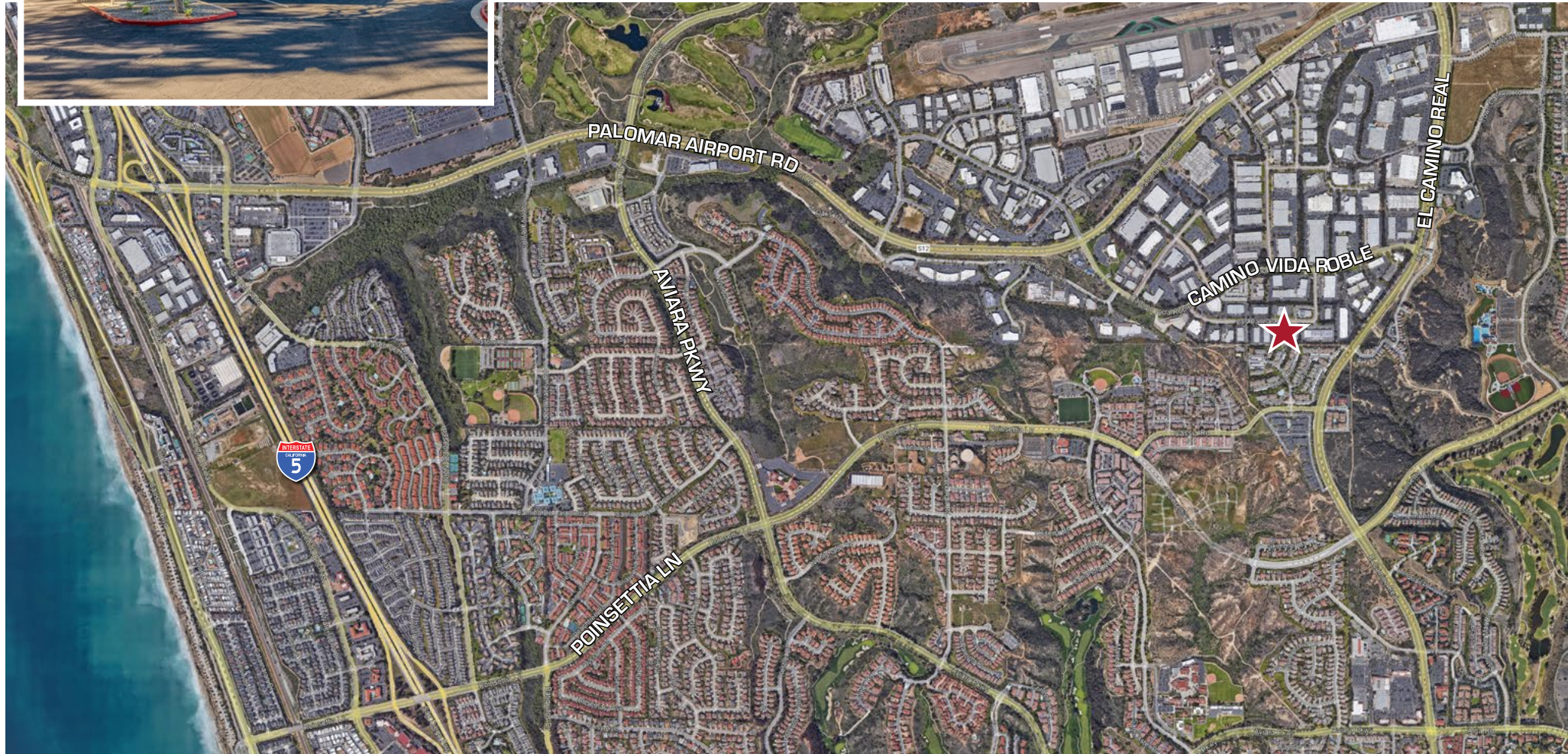
12830 El Camino Real, Suite 100,
San Diego, CA 92130
P 858.546.5400 / F 858.630.6320
cushmanwakefield.com





2151 LAS PALMAS Dr

CARLSBAD, CALIFORNIA 92011



©Cushman & Wakefield. All rights reserved. The information contained in this communication is strictly confidential. This information has been obtained from sources believed to be reliable but has not been verified. NO WARRANTY OR REPRESENTATION, EXPRESS OR IMPLIED, IS MADE AS TO THE CONDITION OF THE PROPERTY (OR PROPERTIES) REFERENCED HEREIN OR AS TO THE ACCURACY OR COMPLETENESS OF THE INFORMATION CONTAINED HEREIN, AND SAME IS SUBMITTED SUBJECT TO ERRORS, OMISSIONS, CHANGE OF PRICE, RENTAL OR OTHER CONDITIONS, WITHDRAWAL WITHOUT NOTICE, AND TO ANY SPECIAL LISTING CONDITIONS IMPOSED BY THE PROPERTY OWNER(S). ANY PROJECTIONS, OPINIONS OR ESTIMATES ARE SUBJECT TO UNCERTAINTY AND DO NOT SIGNIFY CURRENT OR FUTURE PROPERTY PERFORMANCE.

TYLER STEMLEY
858.431.3841
tyler.stemley@cushwake.com

CA Lic. 02003867

JACK TICE
619.500.7626
jack.tice@cushwake.com

CA Lic. 02161178

BRANT ABERG, SIOR
858.546.5464
brant.aberg@cushwake.com

CA Lic. 01773573

12830 El Camino Real, Suite 100,
San Diego, CA 92130
P 858.546.5400 / F 858.630.6320
cushmanwakefield.com

