

# 125 E SIR FRANCIS DRAKE

CREATIVE OFFICE SPACE FOR LEASE

±1,116 - ±14,131 RSF AVAILABLE



CUSHMAN &  
WAKEFIELD



Trevor Buck  
Executive Managing Director  
+1 415 451 2436  
trevor.buck@cushwake.com  
Lic #: 01255462

Whitney Strotz  
Executive Managing Director  
+1 415 451 2406  
whitney.strotz@cushwake.com  
Lic #: 01351397

900 Larkspur Circle  
Suite 295  
Larkspur, CA 94939  
cushmanwakefield.com



Views of Mt. Tam  
and The Bay



Walking distance  
to SMART train,  
ferry, and Marin  
Country Mart



On-site parking



Easy access to  
580 and 101



Waterfront  
location



Exterior  
event/tenant  
space

Trevor Buck  
Executive Managing Director  
+1 415 451 2436  
trevor.buck@cushwake.com  
Lic #: 01255462

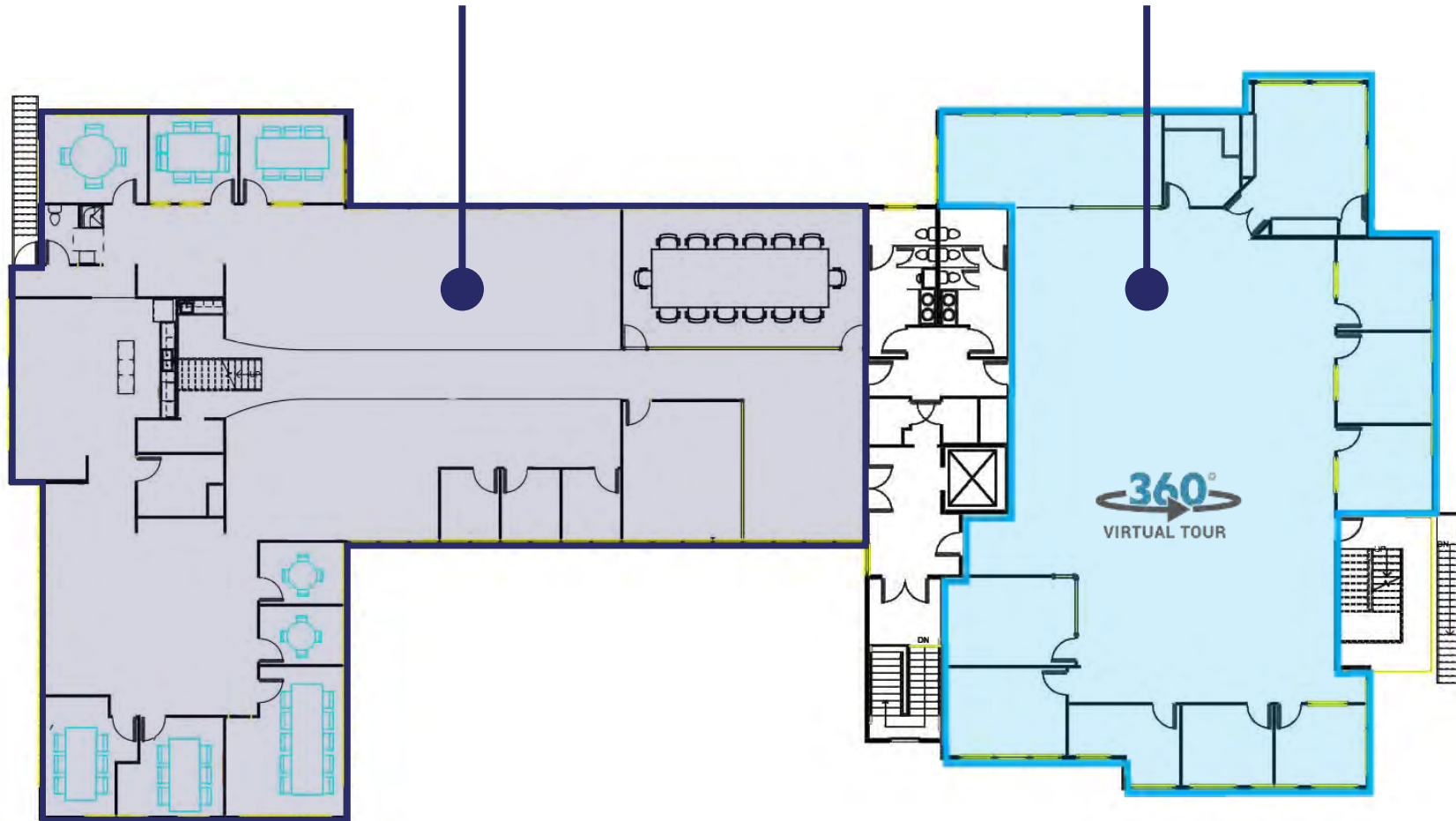
Whitney Strotz  
Executive Managing Director  
+1 415 451 2406  
whitney.strotz@cushwake.com  
Lic #: 01351397

900 Larkspur Circle  
Suite 295  
Larkspur, CA 94939  
cushmanwakefield.com

# AVAILABLE OFFICE

SUITE 300:  
± 8,415 SF

SUITE 301:  
± 5,716 SF

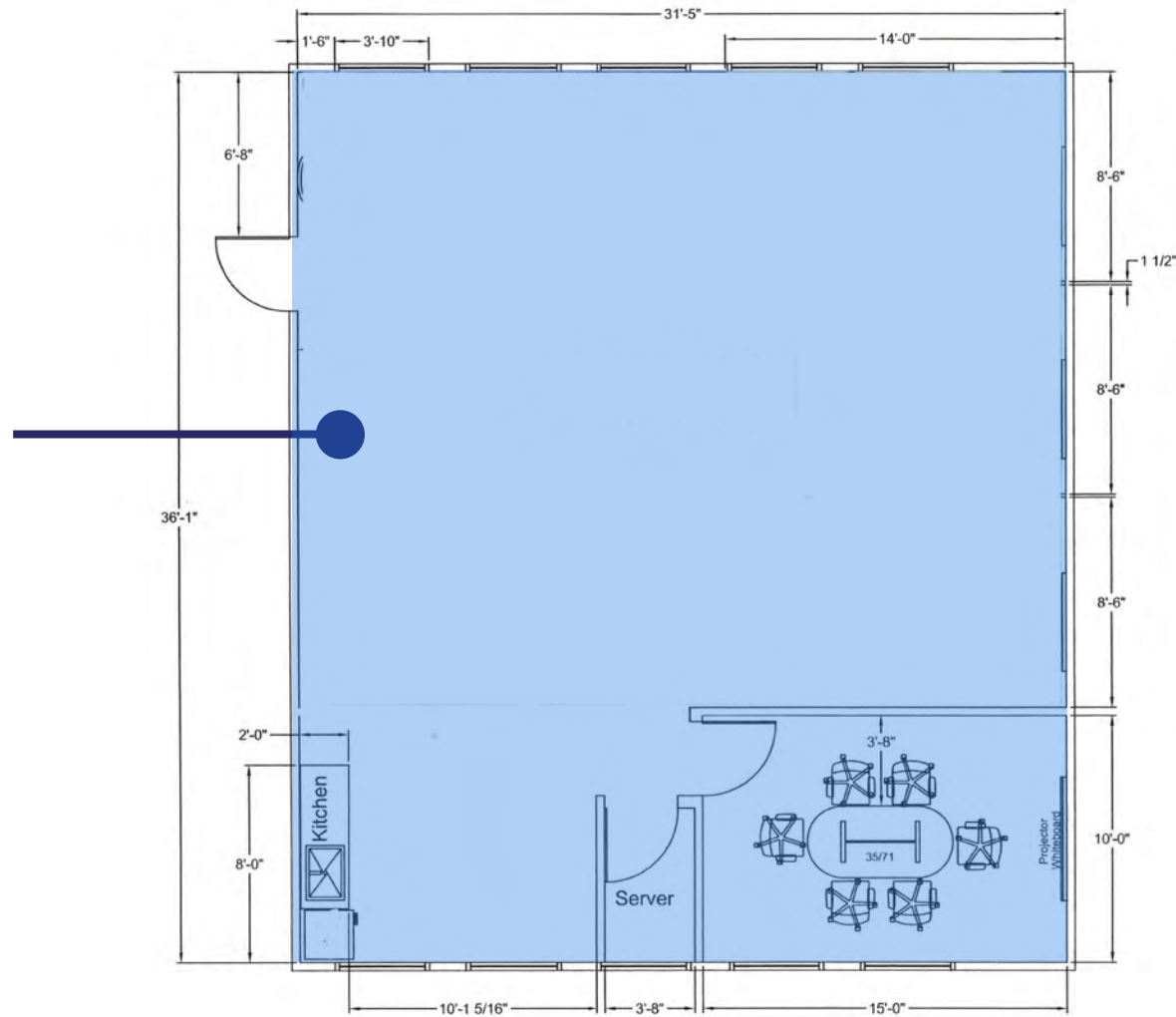


- Mix of private offices, conference rooms, open work area
- 3rd Floor with elevator and stair access
- Kitchen

- Professional finishes
- Views of Mt. Tam and Bay

# AVAILABLE OFFICE

**SUITE 401:**  
**± 1,116 SF**



- Mix of a conference room and open work area
- 4th Floor with elevator and stair access
- Kitchen

- Professional finishes
- Views of Mt. Tam and Bay
- IT closet

# SUITE 300



Loft Area



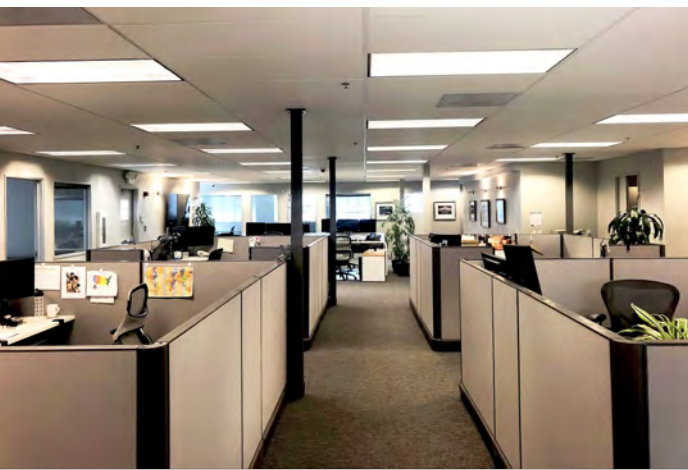
Full Kitchen

SUITE 301

CUSHMAN &  
WAKEFIELD



Break Room with Seating



Full Kitchen



### Marin Country Mart

- Rustic Bakery
- Birkenstock
- International Orange
- The Real Real
- Soul Cycle
- Shake Shack
- Farmshop
- Hog Island
- Johnny Doughnuts
- Pressed Juicery
- Starbucks
- El Huarache Loco
- Sushi Ko
- Tutu School

San Rafael Bay



125 E Sir Francis  
Drake Blvd

Courtyard Marriott

Larkspur Ferry  
Terminal

E Sir Francis Drake Blvd



Sonoma Marin  
SMART Train



Corte Madera Creek

Trevor Buck  
Executive Managing Director  
+1 415 451 2436  
trevor.buck@cushwake.com  
Lic #: 01255462

Whitney Strotz  
Executive Managing Director  
+1 415 451 2406  
whitney.strotz@cushwake.com  
Lic #: 01351397

900 Larkspur Circle  
Suite 295  
Larkspur, CA 94939  
cushmanwakefield.com

# USABLE OUTDOOR TENANT SPACE



Trevor Buck  
Executive Managing Director  
+1 415 451 2436  
trevor.buck@cushwake.com  
Lic #: 01255462

Whitney Strotz  
Executive Managing Director  
+1 415 451 2406  
whitney.strotz@cushwake.com  
Lic #: 01351397

900 Larkspur Circle  
Suite 295  
Larkspur, CA 94939  
cushmanwakefield.com

# 125 E SIR FRANCIS DRAKE FOR LEASE



**Trevor Buck**  
Executive Managing Director  
+1 415 451 2436  
trevor.buck@cushwake.com  
Lic #: 01255462

**Whitney Strotz**  
Executive Managing Director  
+1 415 451 2406  
whitney.strotz@cushwake.com  
Lic #: 01351397

900 Larkspur Circle  
Suite 295  
Larkspur, CA 94939  
cushmanwakefield.com

©2026 Cushman & Wakefield. All rights reserved. The information contained in this communication is strictly confidential. This information has been obtained from sources believed to be reliable but has not been verified. NO WARRANTY OR REPRESENTATION, EXPRESS OR IMPLIED, IS MADE AS TO THE CONDITION OF THE PROPERTY (OR PROPERTIES) REFERENCED HEREIN OR AS TO THE ACCURACY OR COMPLETENESS OF THE INFORMATION CONTAINED HEREIN, AND SAME IS SUBMITTED SUBJECT TO ERRORS, OMISSIONS, CHANGE OF PRICE, RENTAL OR OTHER CONDITIONS, WITHDRAWAL WITHOUT NOTICE, AND TO ANY SPECIAL LISTING CONDITIONS IMPOSED BY THE PROPERTY OWNER(S). ANY PROJECTIONS, OPINIONS OR ESTIMATES ARE SUBJECT TO UNCERTAINTY AND DO NOT SIGNIFY CURRENT OR FUTURE PROPERTY PERFORMANCE.