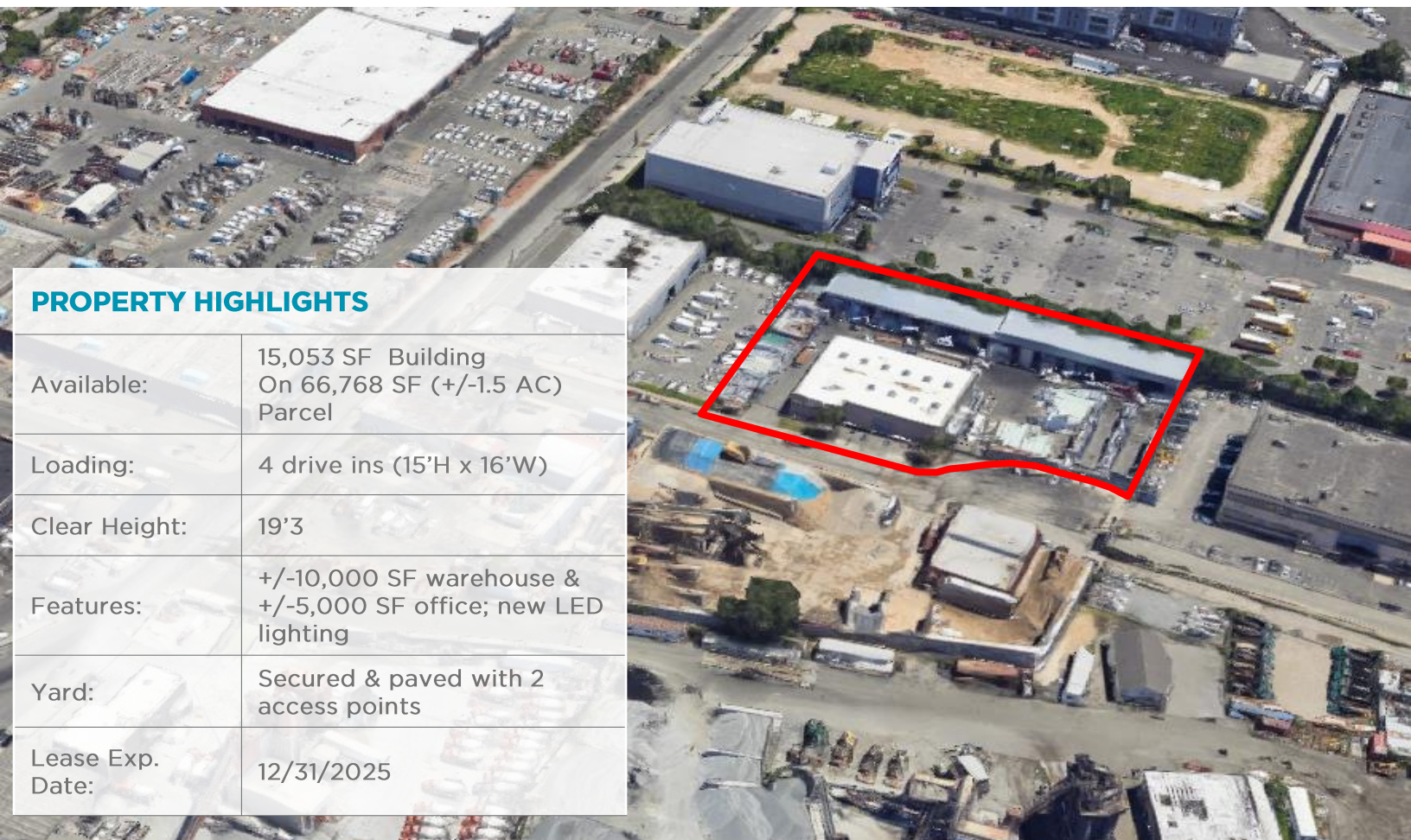


FOR SUBLEASE

31-31 123rd St

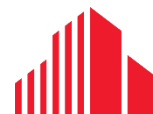
College Point, Queens, NY 11354

**15,053 SF INDUSTRIAL BUILDING
ON 66,768 SF M2-1 ZONED LAND**



PROPERTY HIGHLIGHTS

Available:	15,053 SF Building On 66,768 SF (+/-1.5 AC) Parcel
Loading:	4 drive ins (15'H x 16'W)
Clear Height:	19'3
Features:	+/-10,000 SF warehouse & +/-5,000 SF office; new LED lighting
Yard:	Secured & paved with 2 access points
Lease Exp. Date:	12/31/2025



**CUSHMAN &
WAKEFIELD**

31-31 123rd St

College Point, Queens, NY 11354

15,053 SF Building

On 66,768 SF (+/-1.5 AC) Parcel

FOR SUBLEASE



Rico Murtha
+1 212 390 1368
rico.murtha@cushwake.com

Sonny Singh
+1 718 275 5478
sonny.singh@cushwake.com

Don Yahn
+1 949 309 8888
don.yahn@cushwake.com

Helen Paul
+1 212 841 7575
helen.paul@cushwake.com

Joe Hentze Jr.
+1 718 512 2100
joe.hentze@cushwake.com

Gus Weaver
+1 212 660 7771
gus.weaver@cushwake.com



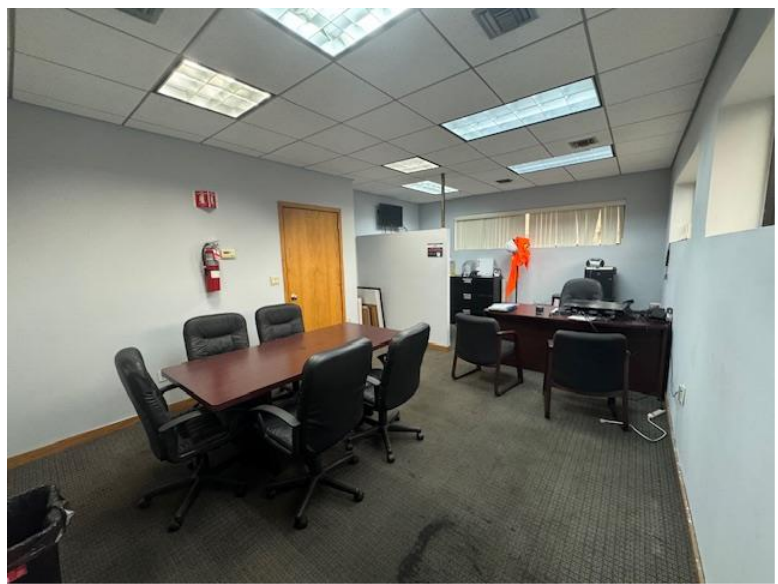
cushmanwakefield.com

©2023 Cushman & Wakefield. All rights reserved. The information contained in this communication is strictly confidential. This information has been obtained from sources believed to be reliable but has not been verified. No warranty or representation, express or implied, is made as to the condition of the property (or properties) referenced herein or as to the accuracy or completeness of the information contained herein, and same is submitted subject to errors, omissions, change of price, rental or other conditions, withdrawal without notice, and to any special listing conditions imposed by the property owner(s). Any projections, opinions or estimates are subject to uncertainty and do not signify current or future property performance.

31-31 123rd St
College Point, NY 11354

15,053 SF Building
On 66,768 SF (+/-1.5 AC) Parcel

FOR SUBLEASE



Rico Murtha
+1 212 390 1368
rico.murtha@cushwake.com

Sonny Singh
+1 718 275 5478
sonny.singh@cushwake.com

Don Yahn
+1 949 309 8888
don.yahn@cushwake.com

Helen Paul
+1 212 841 7575
helen.paul@cushwake.com

Joe Hentze Jr.
+1 718 512 2100
joe.hentze@cushwake.com

Gus Weaver
+1 212 660 7771
gus.weaver@cushwake.com

 **CUSHMAN & WAKEFIELD**
cushmanwakefield.com

©2023 Cushman & Wakefield. All rights reserved. The information contained in this communication is strictly confidential. This information has been obtained from sources believed to be reliable but has not been verified. No warranty or representation, express or implied, is made as to the condition of the property (or properties) referenced herein or as to the accuracy or completeness of the information contained herein, and same is submitted subject to errors, omissions, change of price, rental or other conditions, withdrawal without notice, and to any special listing conditions imposed by the property owner(s). Any projections, opinions or estimates are subject to uncertainty and do not signify current or future property performance.

31-31 123rd St
College Point, NY 11354

15,053 SF Building
On 66,768 SF (+/-1.5 AC) Parcel

FOR SUBLEASE



Rico Murtha
+1 212 390 1368
rico.murtha@cushwake.com

Sonny Singh
+1 718 275 5478
sonny.singh@cushwake.com

Don Yahn
+1 949 309 8888
don.yahn@cushwake.com

Helen Paul
+1 212 841 7575
helen.paul@cushwake.com

Joe Hentze Jr.
+1 718 512 2100
joe.hentze@cushwake.com

Gus Weaver
+1 212 660 7771
gus.weaver@cushwake.com



cushmanwakefield.com

©2023 Cushman & Wakefield. All rights reserved. The information contained in this communication is strictly confidential. This information has been obtained from sources believed to be reliable but has not been verified. No warranty or representation, express or implied, is made as to the condition of the property (or properties) referenced herein or as to the accuracy or completeness of the information contained herein, and same is submitted subject to errors, omissions, change of price, rental or other conditions, withdrawal without notice, and to any special listing conditions imposed by the property owner(s). Any projections, opinions or estimates are subject to uncertainty and do not signify current or future property performance.