

24

CENTRAL PARK SOUTH
AKA 1792 BROADWAY



240

CENTRAL PARK SOUTH

A K A 1 7 9 2 B R O A D W A Y

AN UNPARALLELED 1,200 SF RETAIL OPPORTUNITY
ON COLUMBUS CIRCLE BETWEEN CENTRAL PARK AND NORDSTROM
A 24/7 SUB-MARKET AT THE HEART OF ONE OF NYC BUSIEST INTERSECTIONS

240

CENTRAL PARK SOUTH

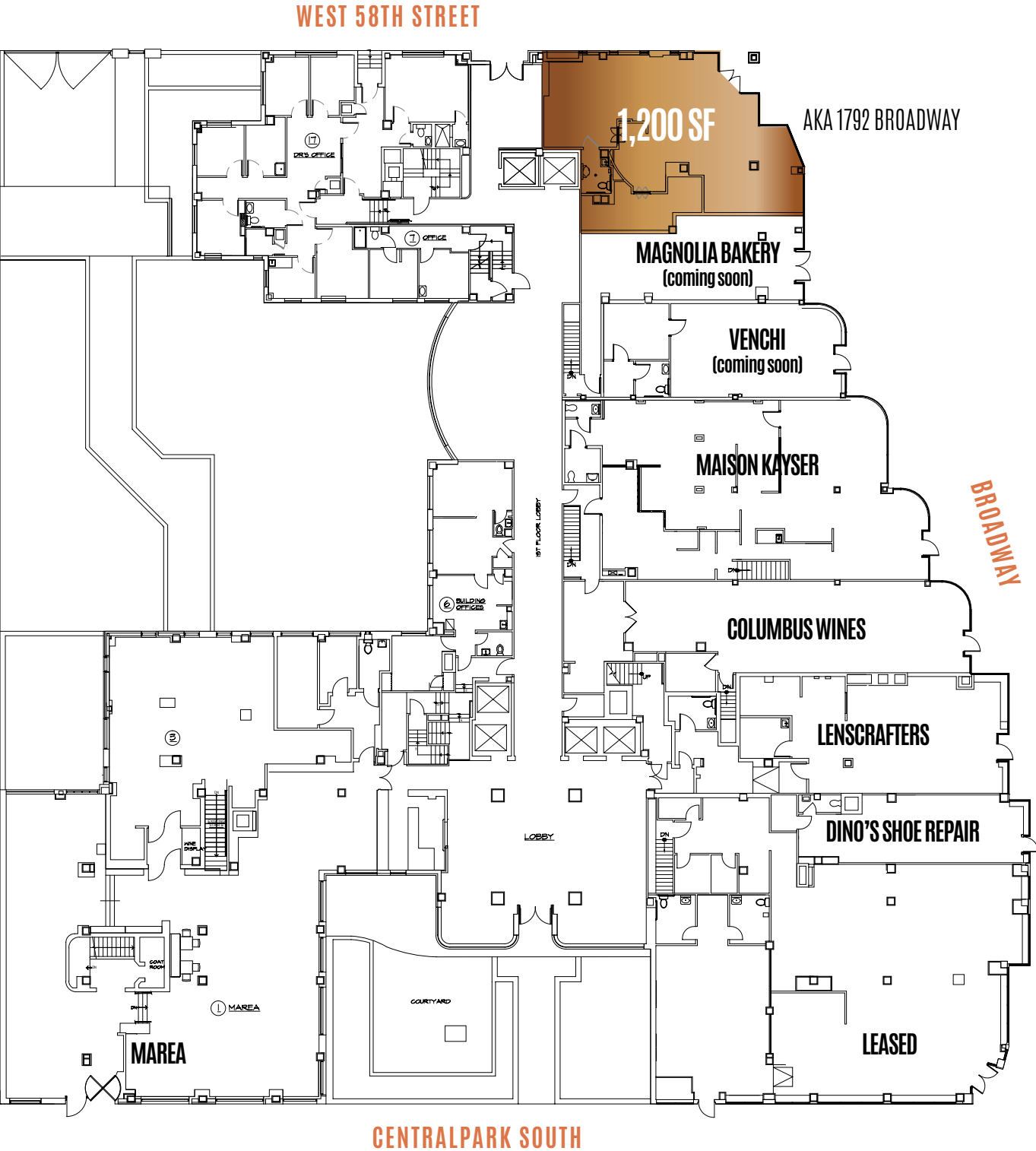
AKA 1792 BROADWAY

1,200 SF GROUND

- Directly across from the new NORDSTROM'S
- High volume corner location
- All non-vented food uses considered
- HVAC and Restroom in place
- Outdoor Café seating permitted



240
CENTRAL PARK SOUTH
AKA 1792 BROADWAY



GROUND FLOOR PLAN

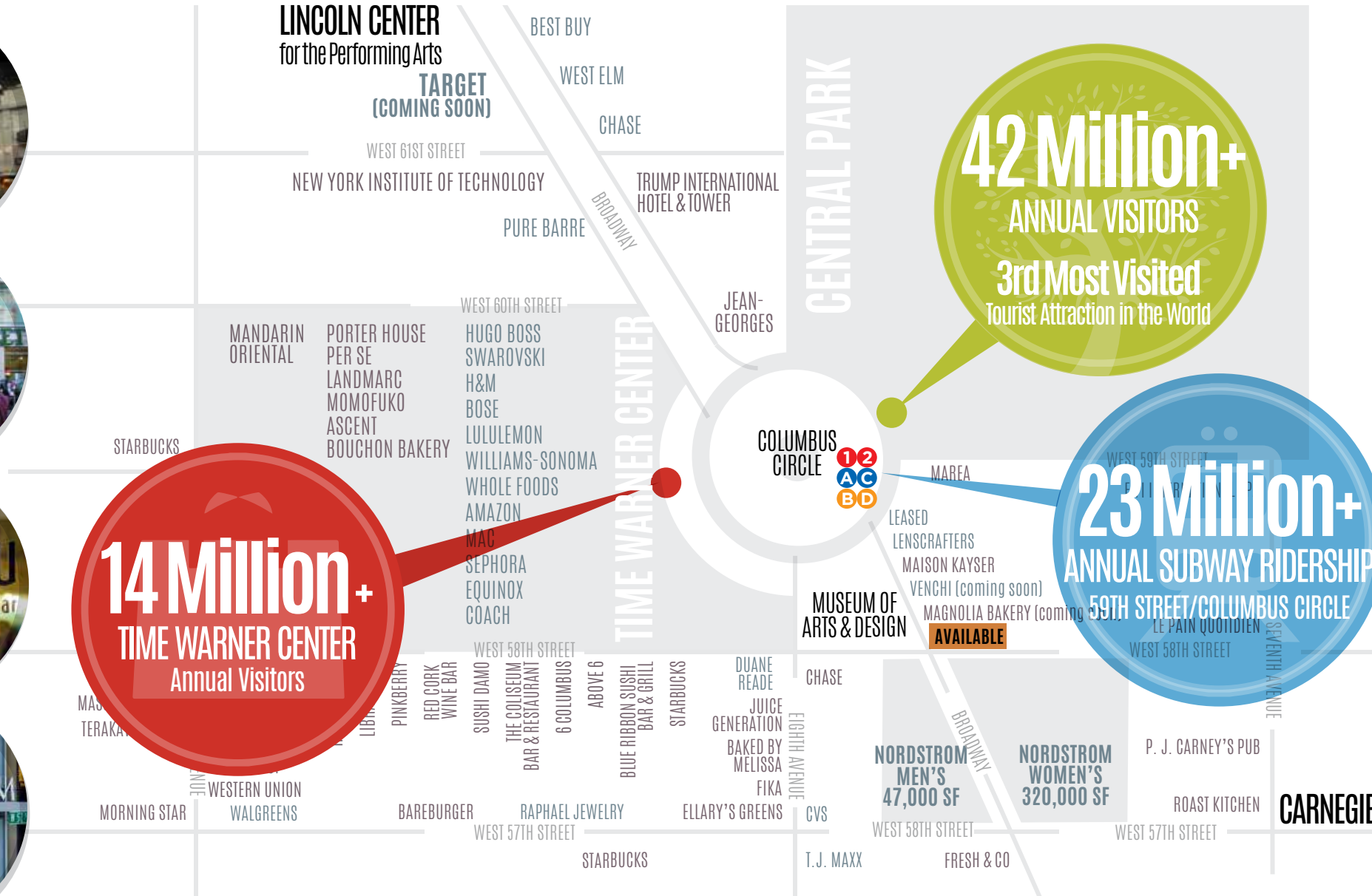
240

CENTRAL PARK SOUTH

AKA 1792 BROADWAY



RETAIL NEIGHBORS



14 Million+
TIME WARNER CENTER
Annual Visitors

42 Million+
ANNUAL VISITORS
3rd Most Visited
Tourist Attraction in the World

23 Million+
ANNUAL SUBWAY RIDERSHIP
59TH STREET/COLUMBUS CIRCLE

**NORDSTROM
MEN'S
47,000 SF**

**NORDSTROM
WOMEN'S
320,00 SF**

CARNEGIE HALL

240

CENTRAL PARK SOUTH

AKA 1792 BROADWAY



Michael Azarian | +1 212 841-7831
Michael.Azarian@cushwake.com

James Ariola | +1 212 698-2572
James.Ariola@cushwake.com

www.cushmanwakefield.com

EXCLUSIVE LEASING AGENT:



©2020 Cushman & Wakefield. All rights reserved. The material in this presentation has been prepared solely for information purposes, and is strictly confidential. Any disclosure, use, copying or circulation of this presentation (or the information contained within it) is strictly prohibited, unless you have obtained Cushman & Wakefield's prior written consent. The views expressed in this presentation are the views of the author and do not necessarily reflect the views of Cushman & Wakefield. Neither this presentation nor any part of it shall form the basis of, or be relied upon in connection with any offer, or act as an inducement to enter into any contract or commitment whatsoever. NO REPRESENTATION OR WARRANTY IS GIVEN, EXPRESS OR IMPLIED, AS TO THE ACCURACY OF THE INFORMATION CONTAINED WITHIN THIS PRESENTATION, AND CUSHMAN & WAKEFIELD IS UNDER NO OBLIGATION TO SUBSEQUENTLY CORRECT IT IN THE EVENT OF ERRORS.