

DAYTON PARKWAY INTERCHANGE LAND

I-94, Dayton, MN



HOME

PROPERTY INFO

AERIALS

SITE PLAN

LAND USE PLAN

INTERCHANGE

CITY WEBSITE



**CUSHMAN &
WAKEFIELD**

3500 American Blvd W Ste 200
Bloomington, MN 55431
cushmanwakefield.com

Jon Rausch, CCIM, SIOR
Executive Director
+1 952 893 8251
jon.rausch@cushwake.com

Luke Appert
Executive Director
+1 952 893 8238
luke.appert@cushwake.com

Ben Drew
Associate
+1 952 837 8553
ben.drew@cushwake.com

visit us at: landmnwi.com

DAYTON PARKWAY INTERCHANGE LAND

I-94, Dayton, MN

[HOME](#)[PROPERTY INFO](#)[AERIALS](#)[SITE PLAN](#)[LAND USE PLAN](#)[INTERCHANGE](#)[CITY WEBSITE](#)

Property Highlights

- Adjacent to the Dayton Parkway Interchange
- Highly sought-after direct interstate visibility and access land
- I-94 Traffic Count: 95,000 vehicles per day

Property Information

Address	Unassigned Dayton, MN
PID #	31-120-22-42-0011
Calculated Acres	10.39
Total Tax	\$19,199.75
2040 Guided Land Use	Commercial/Industrial

Demographics

Demographics	1 Mile	3 Miles	5 Miles
Population	795	14,434	63,799
Households	255	5,502	22,134
Avg HH Income	\$121,599	\$132,737	\$138,089
Daytime Population	999	9,884	25,412



DAYTON PARKWAY INTERCHANGE LAND

I-94, Dayton, MN



[HOME](#)

[PROPERTY INFO](#)

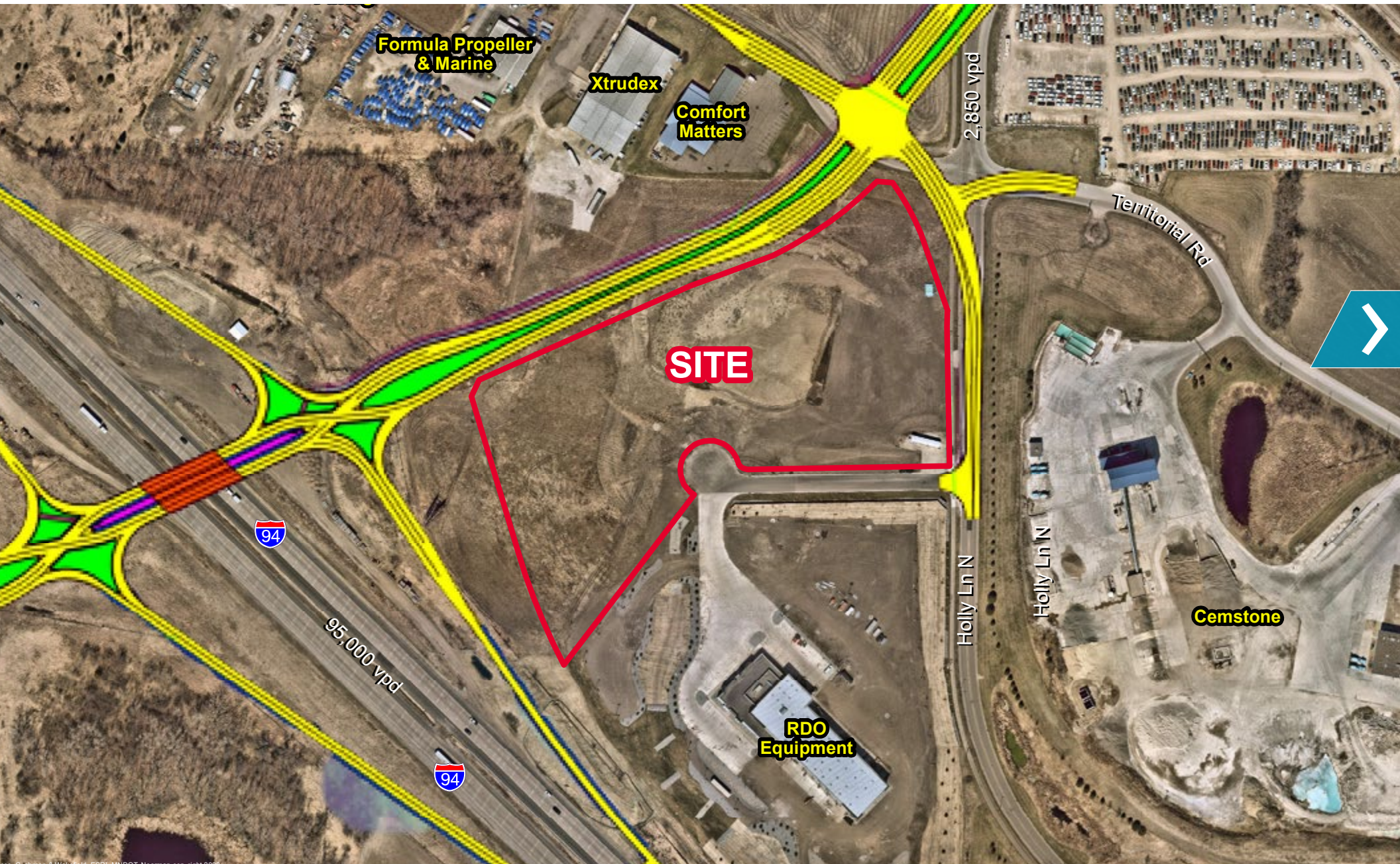
[AERIALS](#)

[SITE PLAN](#)

[LAND USE PLAN](#)

[INTERCHANGE](#)

[CITY WEBSITE](#)



DAYTON PARKWAY INTERCHANGE LAND

I-94, Dayton, MN



HOME

PROPERTY INFO

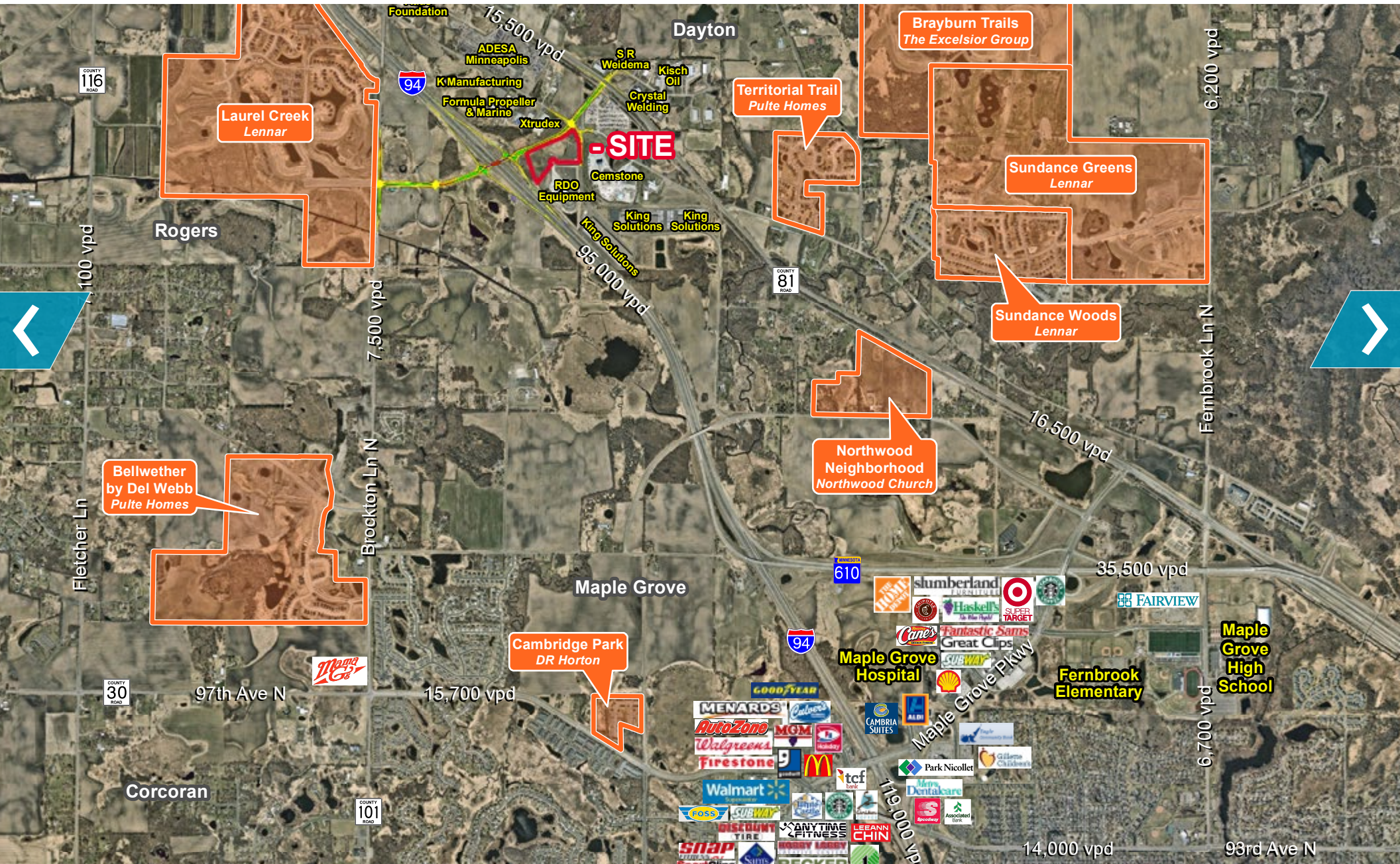
AERIALS

SITE PLAN

LAND USE PLAN

INTERCHANGE

CITY WEBSITE



DAYTON PARKWAY INTERCHANGE LAND

I-94, Dayton, MN



[HOME](#)

[PROPERTY INFO](#)

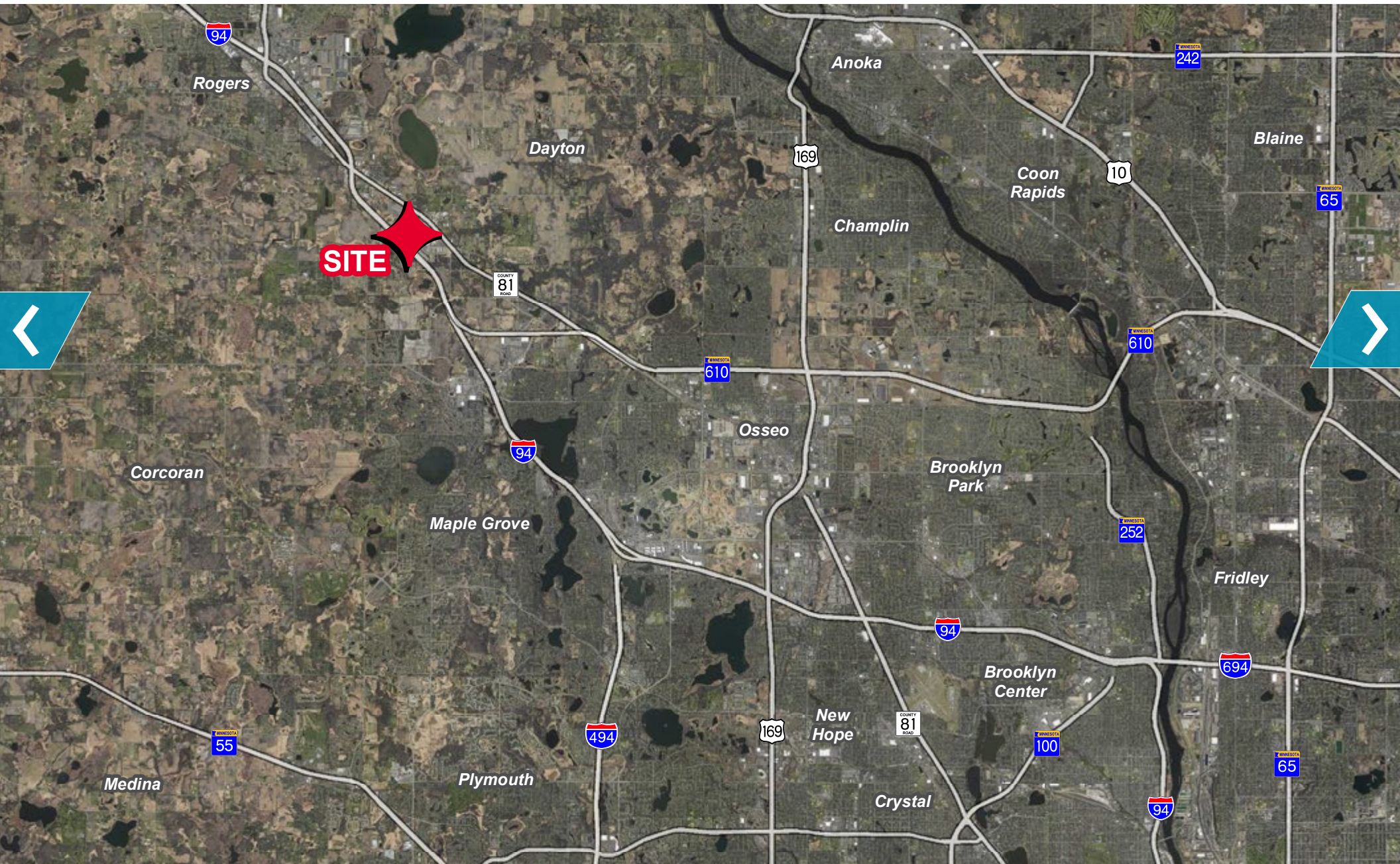
[AERIALS](#)

[SITE PLAN](#)

[LAND USE PLAN](#)

[INTERCHANGE](#)

[CITY WEBSITE](#)



I-94, Dayton, MN

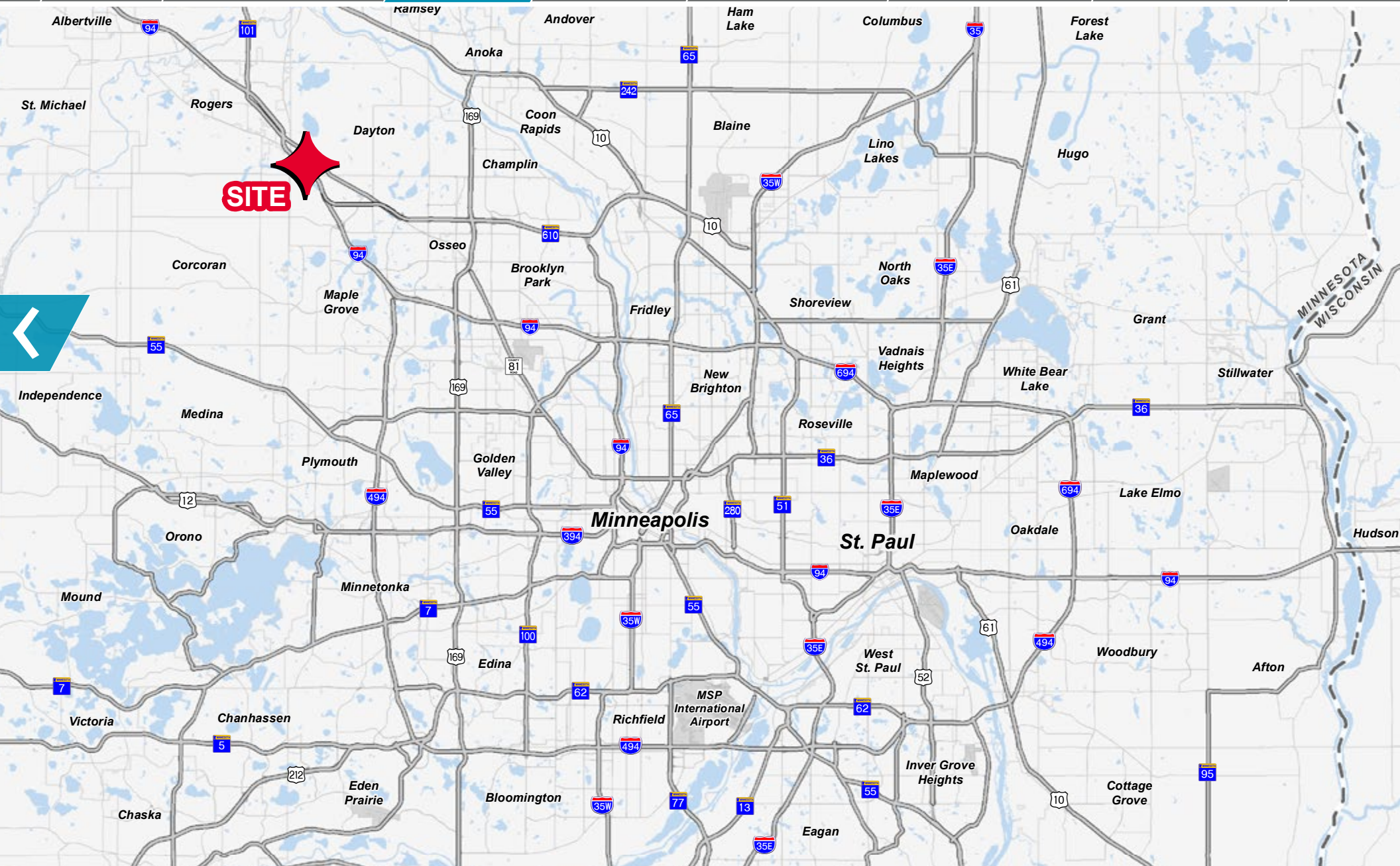


PROPERTY INFO

SITE PLAN

INTERCHANGE

CITY WEBSITE



DAYTON PARKWAY INTERCHANGE LAND

I-94, Dayton, MN



HOME

PROPERTY INFO

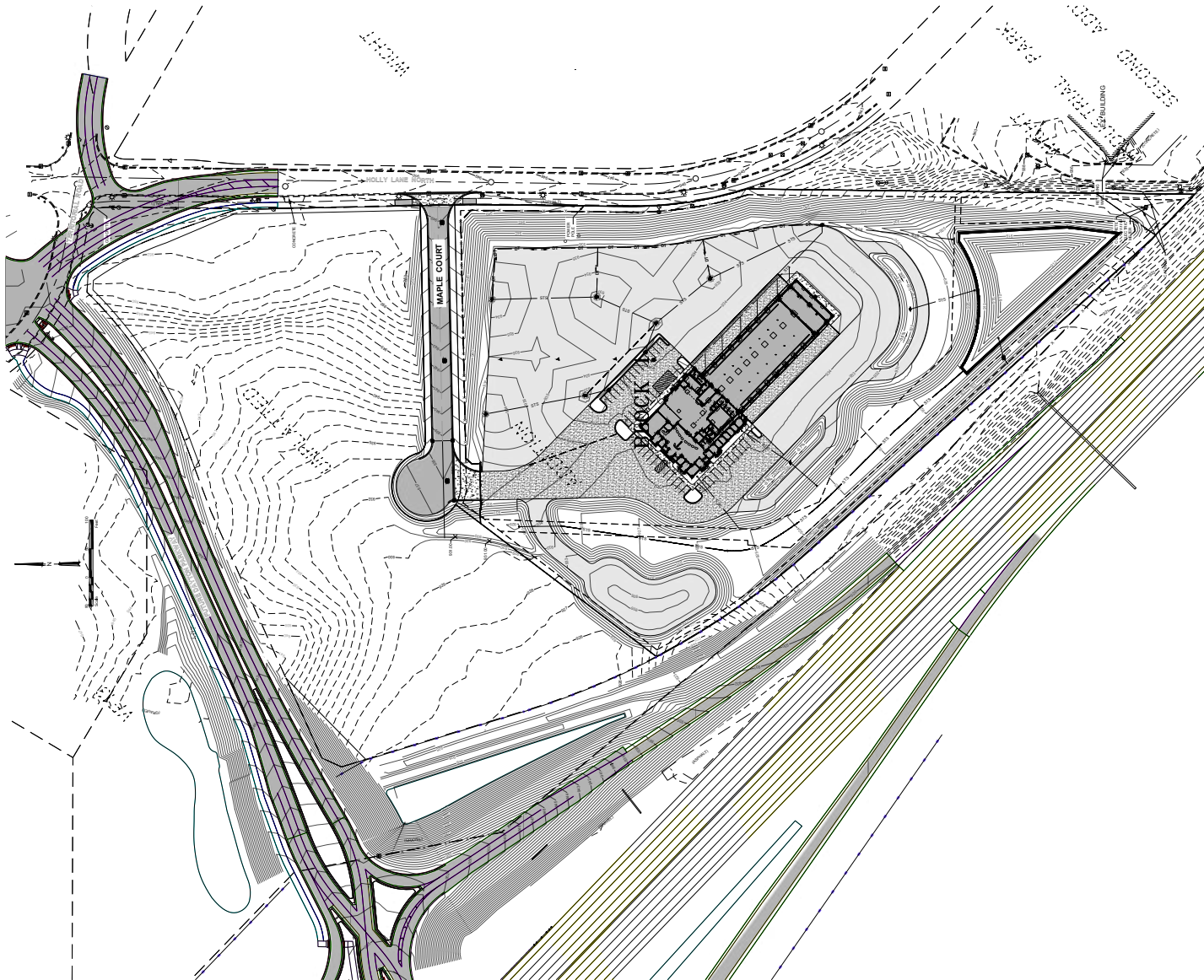
AERIALS

SITE PLAN

LAND USE PLAN

INTERCHANGE

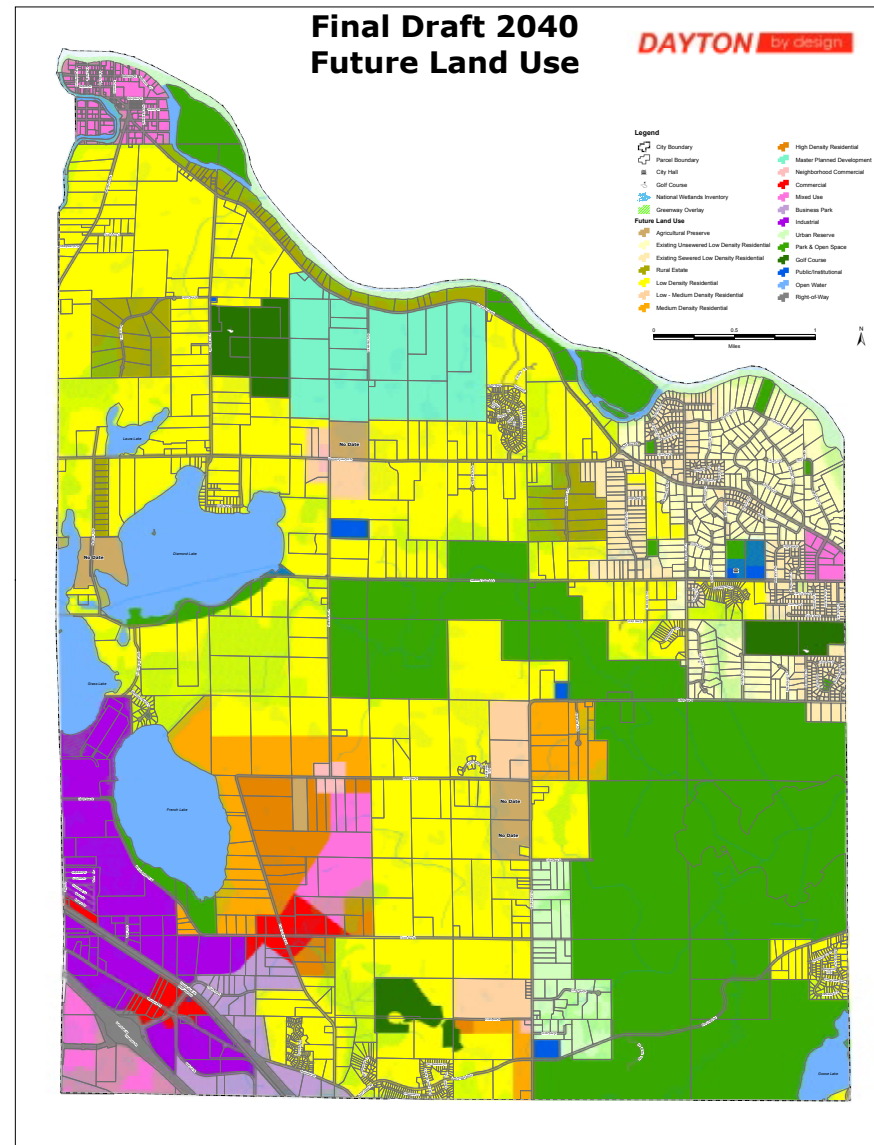
CITY WEBSITE



[CLICK ON SITE PLAN FOR PRINTABLE IMAGE](#)

DAYTON PARKWAY INTERCHANGE LAND

I-94, Dayton, MN

[HOME](#)[PROPERTY INFO](#)[AERIALS](#)[SITE PLAN](#)[LAND USE PLAN](#)[INTERCHANGE](#)[CITY WEBSITE](#)

[CLICK ON LAND USE PLAN FOR PRINTABLE IMAGE](#)

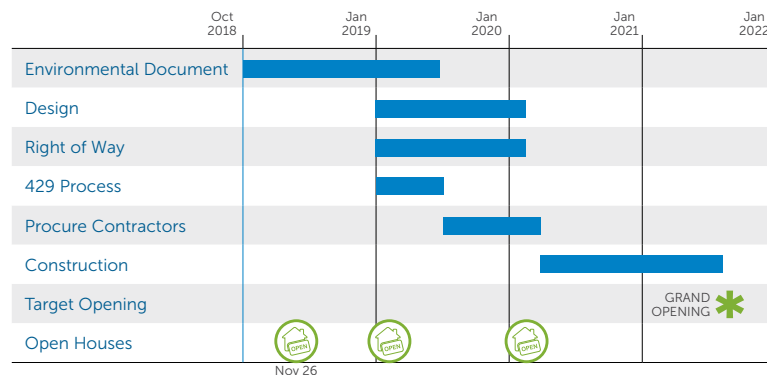
DAYTON PARKWAY INTERCHANGE LAND

I-94, Dayton, MN


[HOME](#)
[PROPERTY INFO](#)
[AERIALS](#)
[SITE PLAN](#)
[LAND USE PLAN](#)
[INTERCHANGE](#)
[CITY WEBSITE](#)

Proposed Timeframe

The proposed timeline for this project coincides with the I-94 pavement project.



Project Partners

City of Dayton
 City of Rogers
 City of Maple Grove
 City of Corcoran
 Minnesota Department of Transportation
 Hennepin County
 Federal Highway Administration
 Metropolitan Council
 Three Rivers Park District

Contact

Tina Goodroad, City Administrator, City of Dayton
 12260 South Diamond Lake Road
 Dayton, MN 55327
 763-427-4589 | tgoodroad@cityofdaytonmn.com

To learn more about the I-94/Dayton Parkway Interchange Project visit:
www.cityofdaytonmn.com
 Click the "Interstate 94 and Dayton Parkway Interchange" link

Dayton Parkway Interchange

Moving Toward Construction in 2020!



The Dayton Parkway Interchange is being advanced to final design and construction with a planned opening in 2021. The interchange has strong support from the community and regional partners.

Why is this Interchange Needed?

- Improve safety and emergency response
- Reduce congestion on other I-94 interchanges
- Prevent future congestion on local arterials
- Address planned growth in this area

30,000+ growth in population

18,000+ growth in area employment

Thanks for your input and support.

The City of Dayton has been working in partnership with agencies and neighboring cities to develop a long-term plan for the northwest Twin Cities Metro area. The Dayton Parkway Interchange is an important part of this plan. The City looks forward to this ongoing partnership to improve transportation and encourage community development.

November 2018



DAYTON PARKWAY INTERCHANGE LAND

I-94, Dayton, MN

[HOME](#)[PROPERTY INFO](#)[AERIALS](#)[SITE PLAN](#)[LAND USE PLAN](#)[INTERCHANGE](#)[CITY WEBSITE](#)

Moving Forward

After nearly 10 years of study and collaboration, the Dayton Parkway Interchange is close to becoming a reality. The city has been working with its partners on funding and plan refinements. The refinements to the design have lowered costs by \$7M - \$10M while preserving safety and functionality for users. This interchange is part of a long-term system plan that eventually will include an extension of County Road 117 to the west and an arterial roadway through the center of Dayton.

Construction is planned to start in 2020 and the interchange is anticipated to open in the fall of 2021.

“Dayton Parkway finally gives Dayton direct access to I-94. This will unlock the economic potential of Dayton, and substantially cut the commute time for its residents.”

— Tim McNeil, Mayor, City of Dayton

Diverging Diamond Alternative Selected



Why a Diverging Diamond Interchange?

The diverging diamond interchange is a very efficient and safe option when the majority of traffic in the interchange is turning. In the case of Dayton Parkway and I-94 there is two to six times the level of traffic turning versus traveling through the interchange. The proposed configuration stopped half as many vehicles as the next best alternative.

- Meets federal, state, and county requirements
- Meets traffic demands for future urbanization of Dayton
- Works well with heavy truck volumes
- Supports multimodal use
- Safer than most other interchanges
- Minimizes additional permanent ROW
- Minimizes size of bridge
- One of the lower cost options
- Supports good access spacing and has good circulation to residents and businesses

Scan this QR code to see a traffic simulation of the proposed Dayton Parkway diverging diamond interchange.

