

21 Acres Single-Family Land

10830 Stillwater Blvd N, Lake Elmo, MN

FOR SALE



For more information, please contact:

Jon Rausch, CCIM, SIOR
Executive Director
+1 952 893 8251
jon.rausch@cushwake.com

Luke Appert
Executive Director
+1 952 893 8238
luke.appert@cushwake.com

Ben Drew
Senior Associate
+1 952 837 8553
ben.drew@cushwake.com

Cushman & Wakefield
3500 American Blvd W Ste 200
Bloomington, MN 55431
cushmanwakefield.com

visit us at: landmnwi.com

21 Acres Single-Family Land

10830 Stillwater Blvd N, Lake Elmo, MN



FOR SALE

Property Highlights

- New development opportunity in Lake Elmo within the new Village Area of Downtown Lake Elmo
- Easy access from Hwy 5, excellent proximity to parks, lakes, downtown, etc.
- Located in Stillwater School District

Demographics (2022)

	1 Mile	3 Miles	5 Miles
Population	1,256	12,287	75,185
Households	470	4,277	29,083
Median HH Income	\$141,454	\$143,349	\$105,882
Daytime Population	836	3,267	35,334

Traffic Counts

	Vehicles Per Day (VPD)
Stillwater Blvd N	10,400 VPD
Manning Ave	13,900 VPD

Site Information

Address	10830 Stillwater Blvd N Lake Elmo, MN
PID #	14.029.21.14.0001 (partial) 14.029.21.41.0001 14.029.21.41.0002
Zoning	RT-Rural Transitional
2040 Guided Land Use	V-LDR Village Low Density Residential (1.5 - 3 units per acre)



21 Acres Single-Family Land

10830 Stillwater Blvd N, Lake Elmo, MN

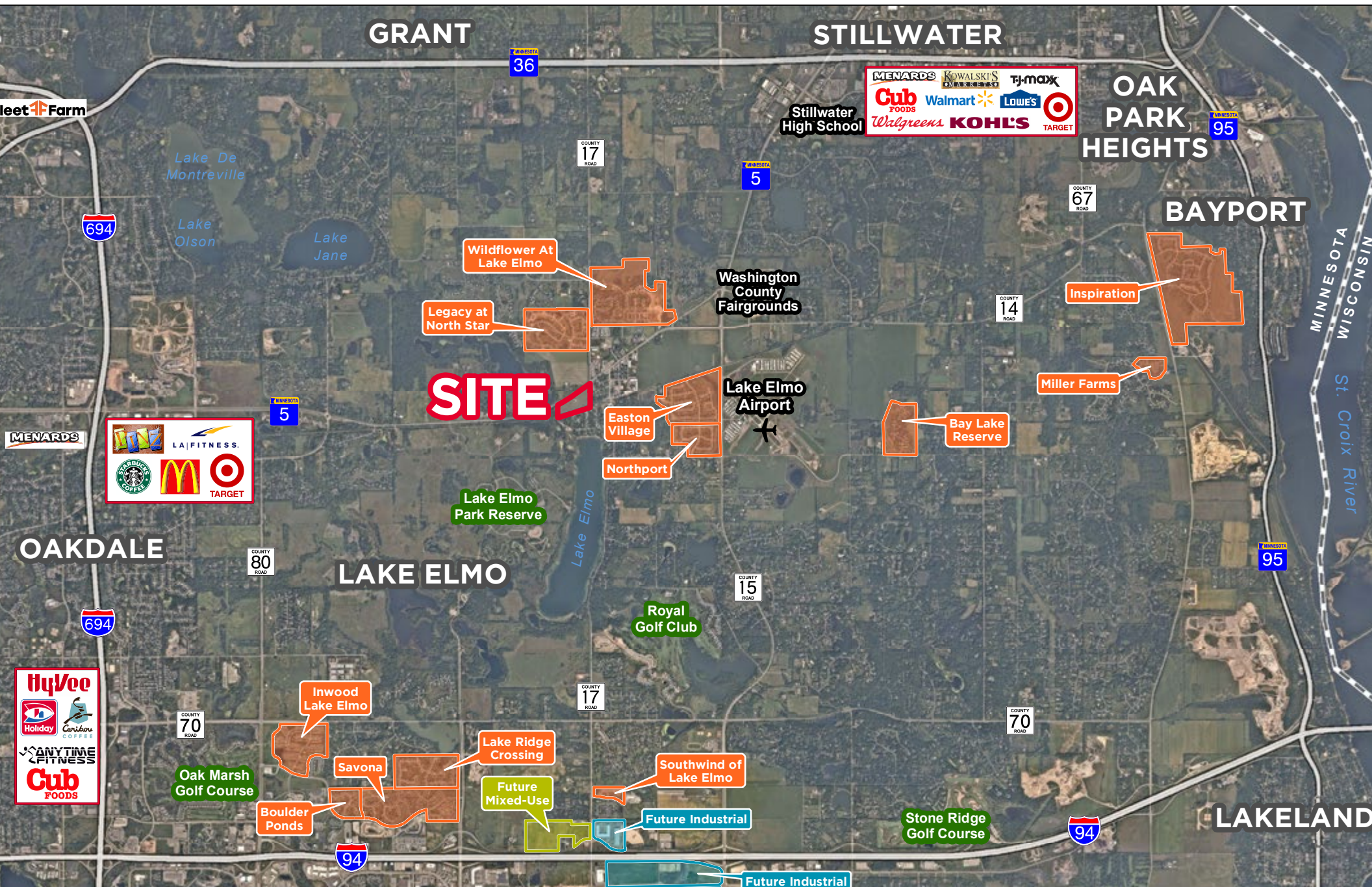
FOR SALE



21 Acres Single-Family Land

10830 Stillwater Blvd N, Lake Elmo, MN

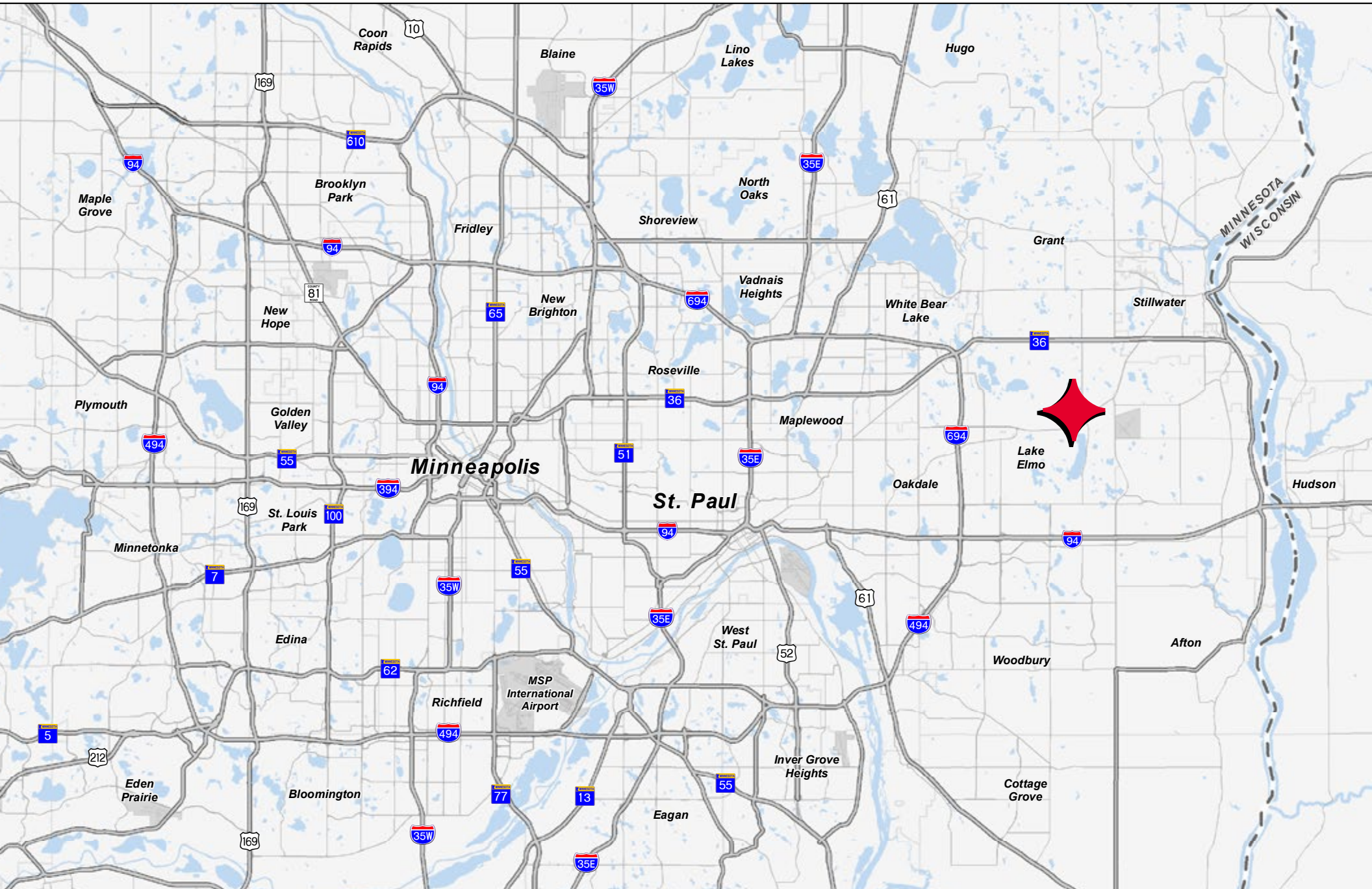
FOR SALE



21 Acres Single-Family Land

10830 Stillwater Blvd N, Lake Elmo, MN

FOR SALE

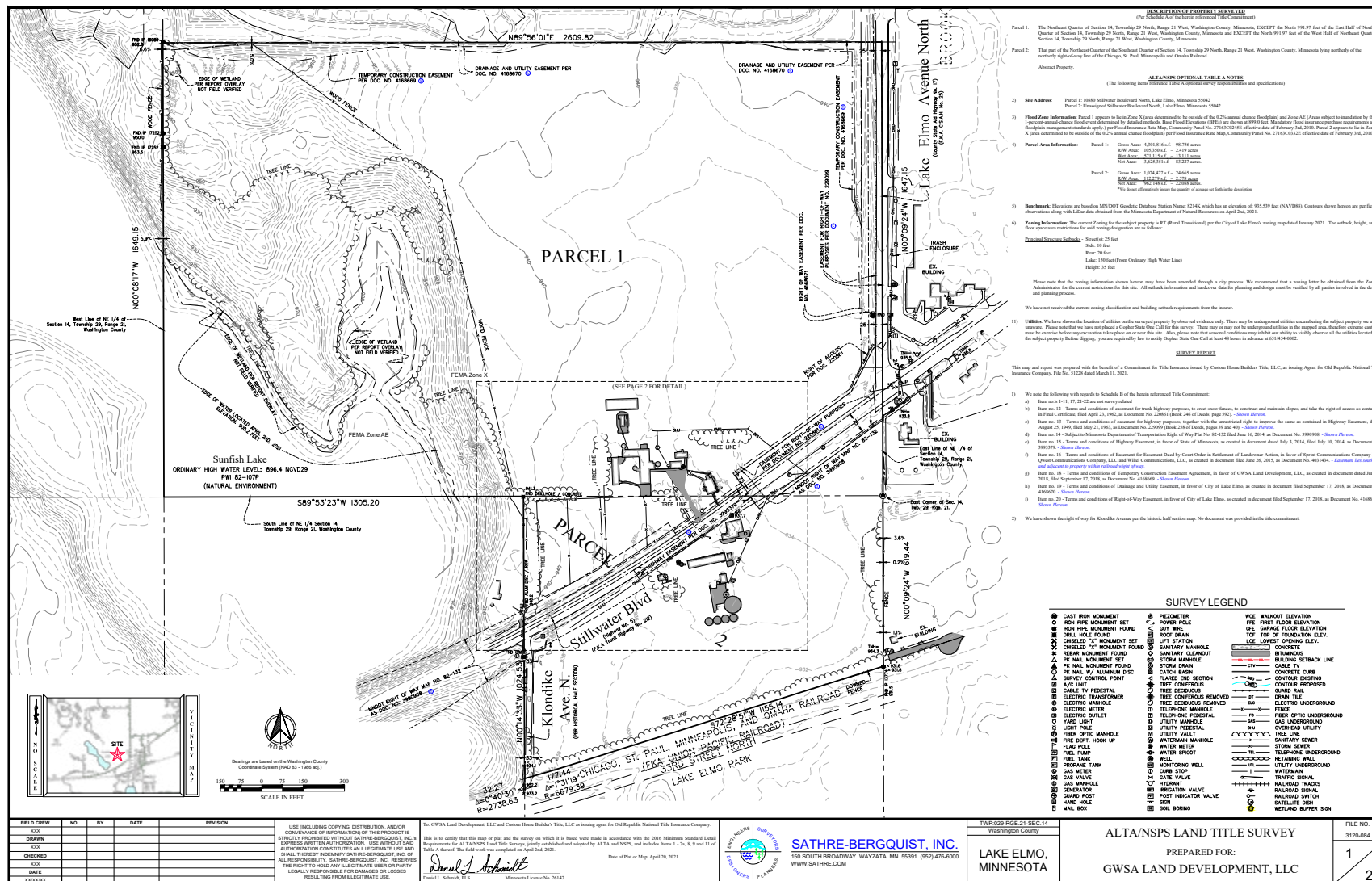


10830 Stillwater Blvd N, Lake Elmo, MN

FOR SALE



Survey



[CLICK ON SURVEY FOR PRINTABLE IMAGE](#)

10830 Stillwater Blvd N, Lake Elmo, MN



Zoned RT - Rural Development Transitional District

Lake Elmo Zoning Map



10830 Stillwater Blvd N, Lake Elmo, MN



Planned Village Low Density Residential

