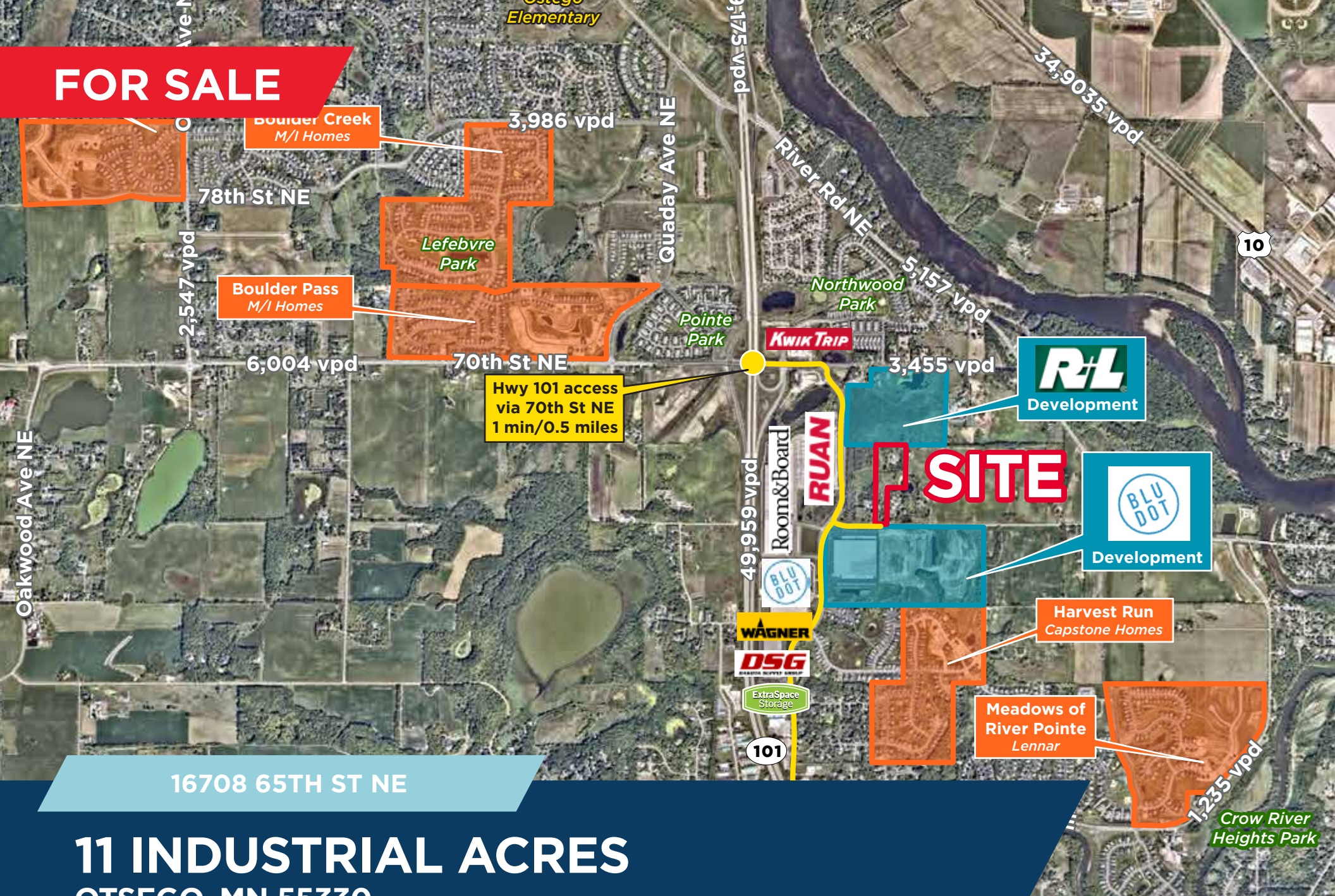


FOR SALE



16708 65TH ST NE

11 INDUSTRIAL ACRES

OTSEGO, MN 55330

BEN DREW
Senior Associate
+1 952 210 4637
ben.drew@cushwake.com

JON RAUSCH
Executive Director
+1 612 685 8288
jon.rausch@cushwake.com



16708 65TH ST NE OTSEGO, MN 55330

Property Highlights

- Sewer and water available
- Guided for industrial uses
- Adjacent property to West is also available, both sites total 26 acres

Property Information

PID #	118500351300
Acreage	10.61
Zoning	Agricultural
2040 Land Use	Industrial
Tax	\$6,136.00

Demographics (2023)

	1 Mile	3 Miles	5 Miles
Population	3,404	20,582	62,167
Households	1,389	7,365	22,108
Average HH Income	\$127,078	\$138,397	\$130,978
Daytime Population	662	7,071	26,413



16708 65TH ST NE
OTSEGO, MN 55330



16708 65TH ST NE
OTSEGO, MN 55330

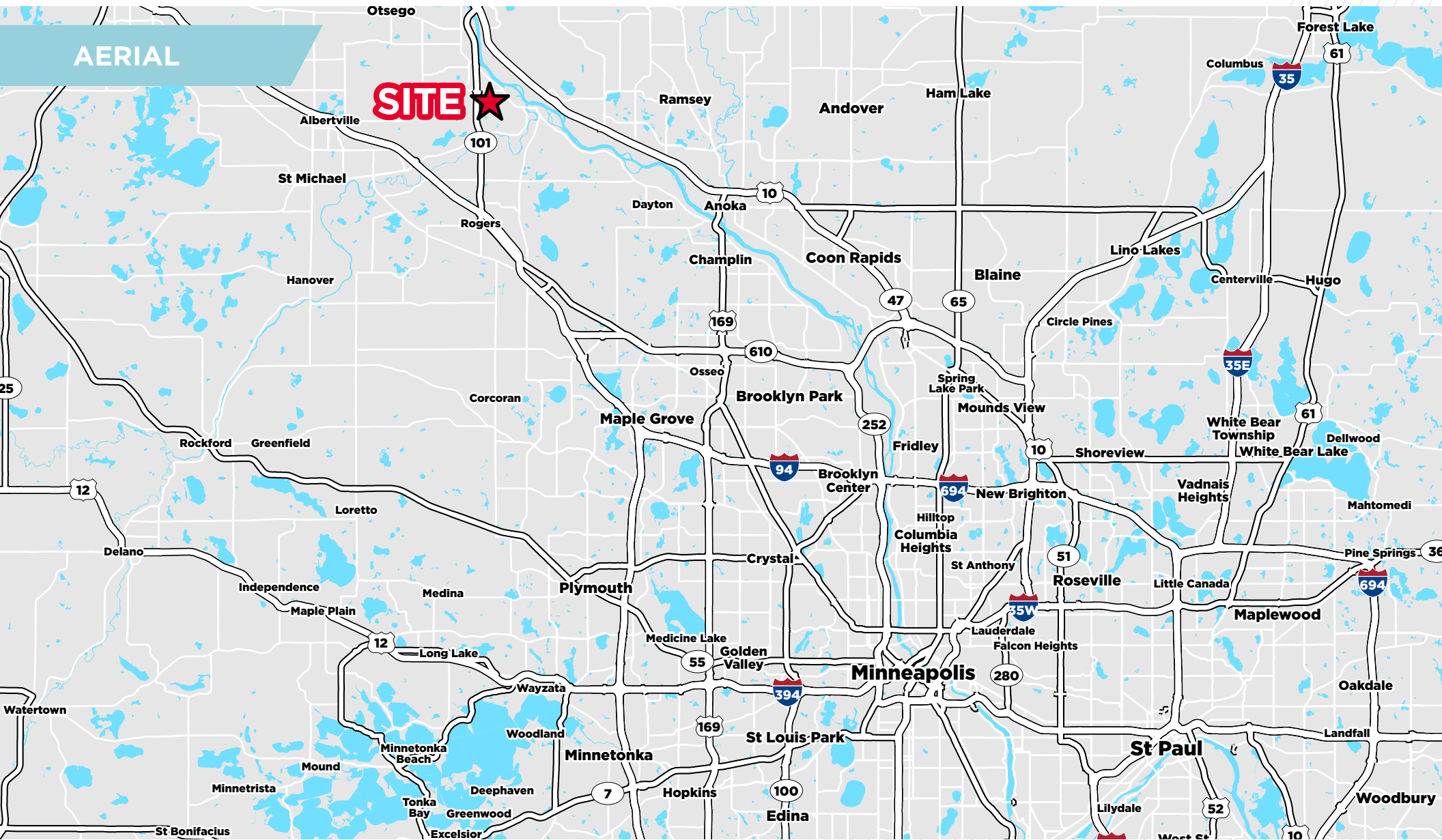


16708 65TH ST NE

OTSEGO, MN 55330



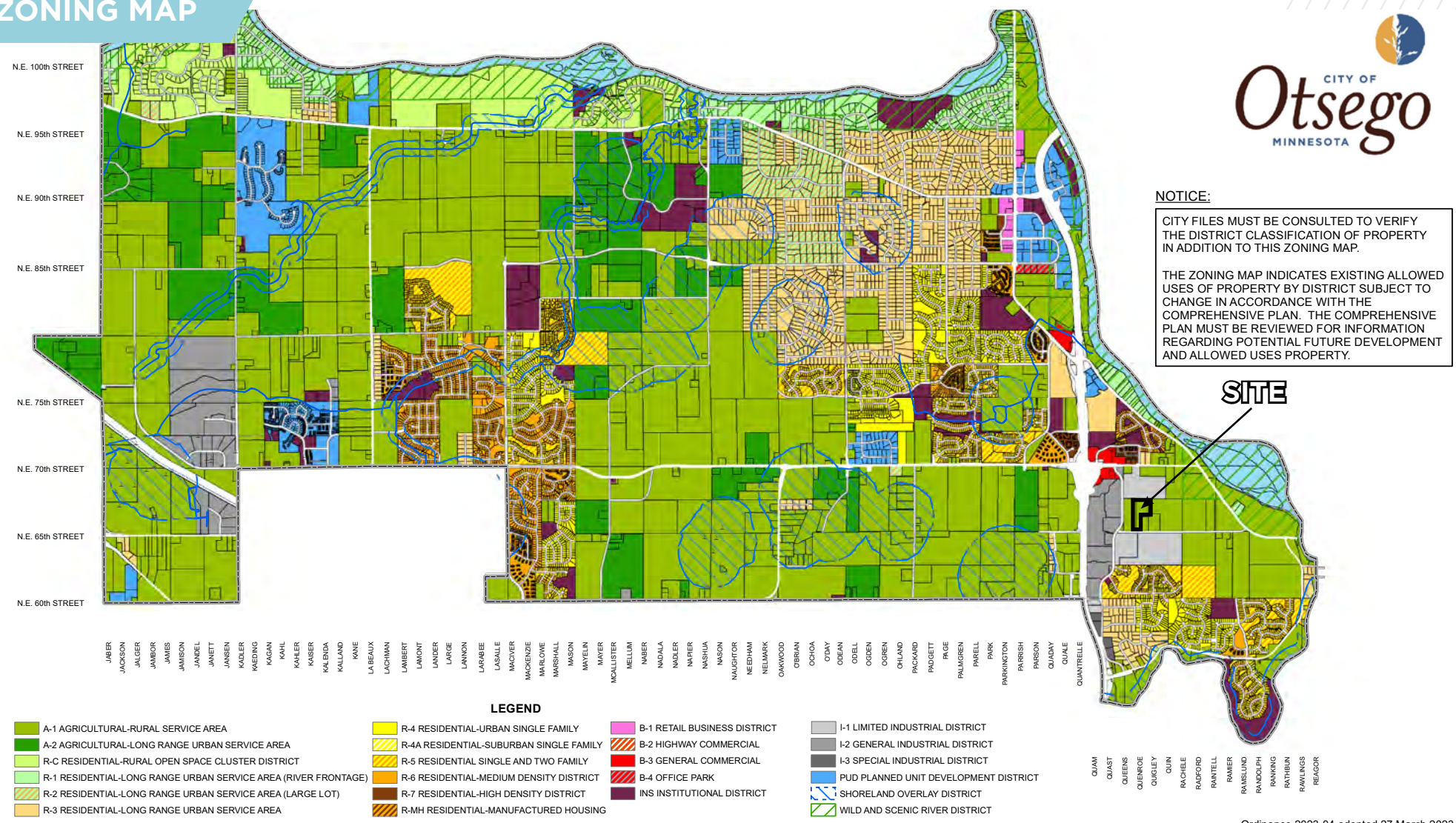
16708 65TH ST NE
OTSEGO, MN 55330



16708 65TH ST NE

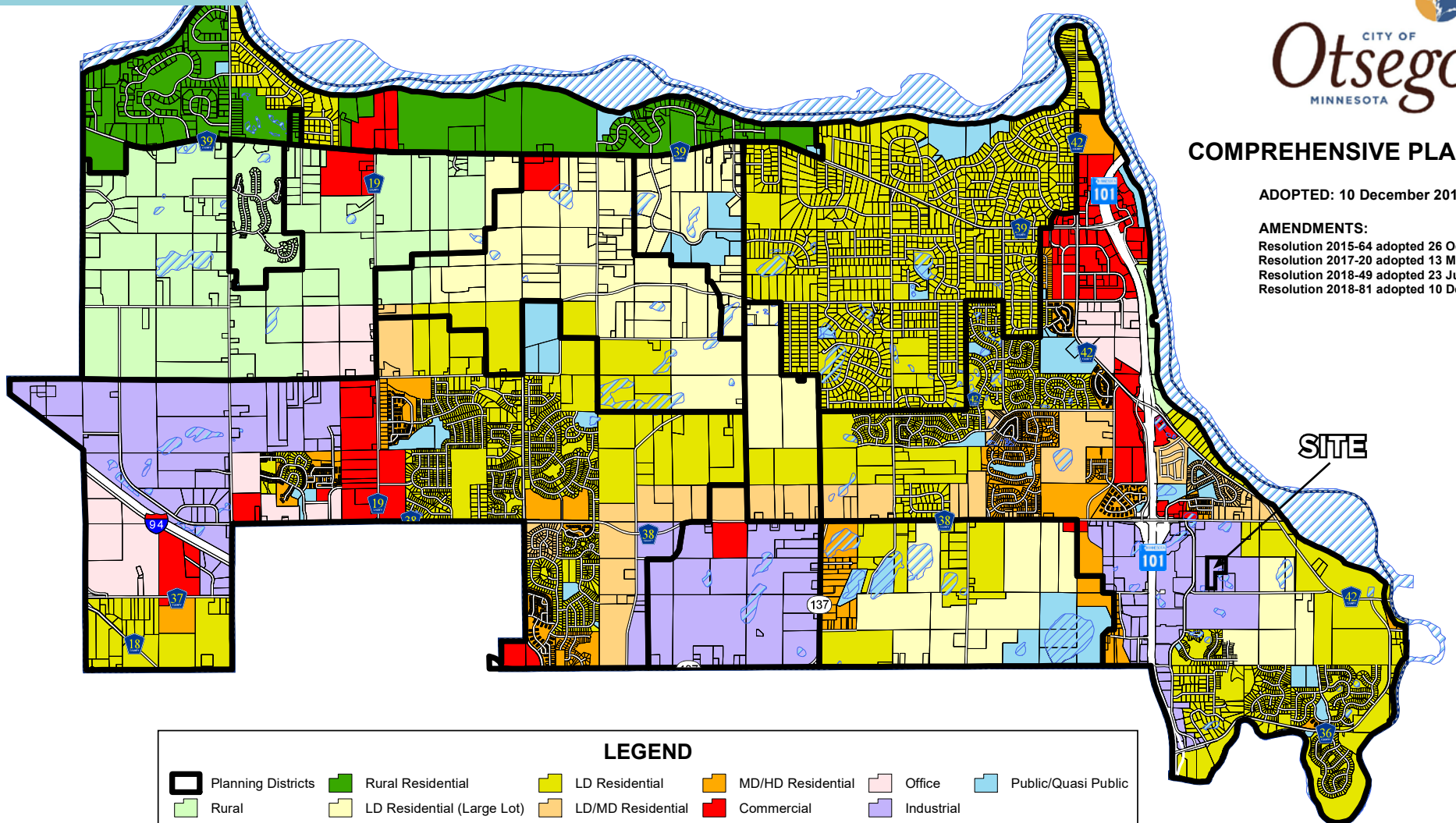
OTSEGO, MN 55330

ZONING MAP



16708 65TH ST NE OTSEGO, MN 55330

LAND USE MAP



COMPREHENSIVE PLAN 2012

ADOPTED: 10 December 2012

AMENDMENTS:

Resolution 2015-64 adopted 26 October 2015
Resolution 2017-20 adopted 13 March 2017
Resolution 2018-49 adopted 23 July 2018
Resolution 2018-81 adopted 10 December 2018



FOR MORE INFORMATION, CONTACT:

BEN DREW

Senior Associate
+1 952 210 4637
ben.drew@cushwake.com

JON RAUSCH

Executive Director
+1 612 685 8288
jon.rausch@cushwake.com

©2023 Cushman & Wakefield. All rights reserved. The material in this presentation has been prepared solely for information purposes, and is strictly confidential. Any disclosure, use, copying or circulation of this presentation (or the information contained within it) is strictly prohibited, unless you have obtained Cushman & Wakefield's prior written consent. The views expressed in this presentation are the views of the author and do not necessarily reflect the views of Cushman & Wakefield. Neither this presentation nor any part of it shall form the basis of, or be relied upon in connection with any offer, or act as an inducement to enter into any contract or commitment whatsoever. NO REPRESENTATION OR WARRANTY IS GIVEN, EXPRESS OR IMPLIED, AS TO THE ACCURACY OF THE INFORMATION CONTAINED WITHIN THIS PRESENTATION, AND CUSHMAN & WAKEFIELD IS UNDER NO OBLIGATION TO SUBSEQUENTLY CORRECT IT IN THE EVENT OF ERRORS.