

INDUSTRIAL BTS OPPORTUNITY

56 ACRES FOR SALE CORCORAN



CONTACTS:

JON RAUSCH
Executive Director
+1 612 685 8288
jon.rausch@cushwake.com

BEN DREW
Senior Associate
+1 952 210 4637
ben.drew@cushwake.com

LUKE APPERT
Executive Director
+1 651 315 6641
luke.appert@cushwake.com

THEO PETRIE
Associate
+1 763 234 6362
theo.petrie@cushwake.com

MEDINA

Hwy. 55 & Pioneer Trail
Corcoran, MN
Hennepin County
Public Works

CUSHMAN & WAKEFIELD

CORCORAN

SITE

**Medina
Electric**

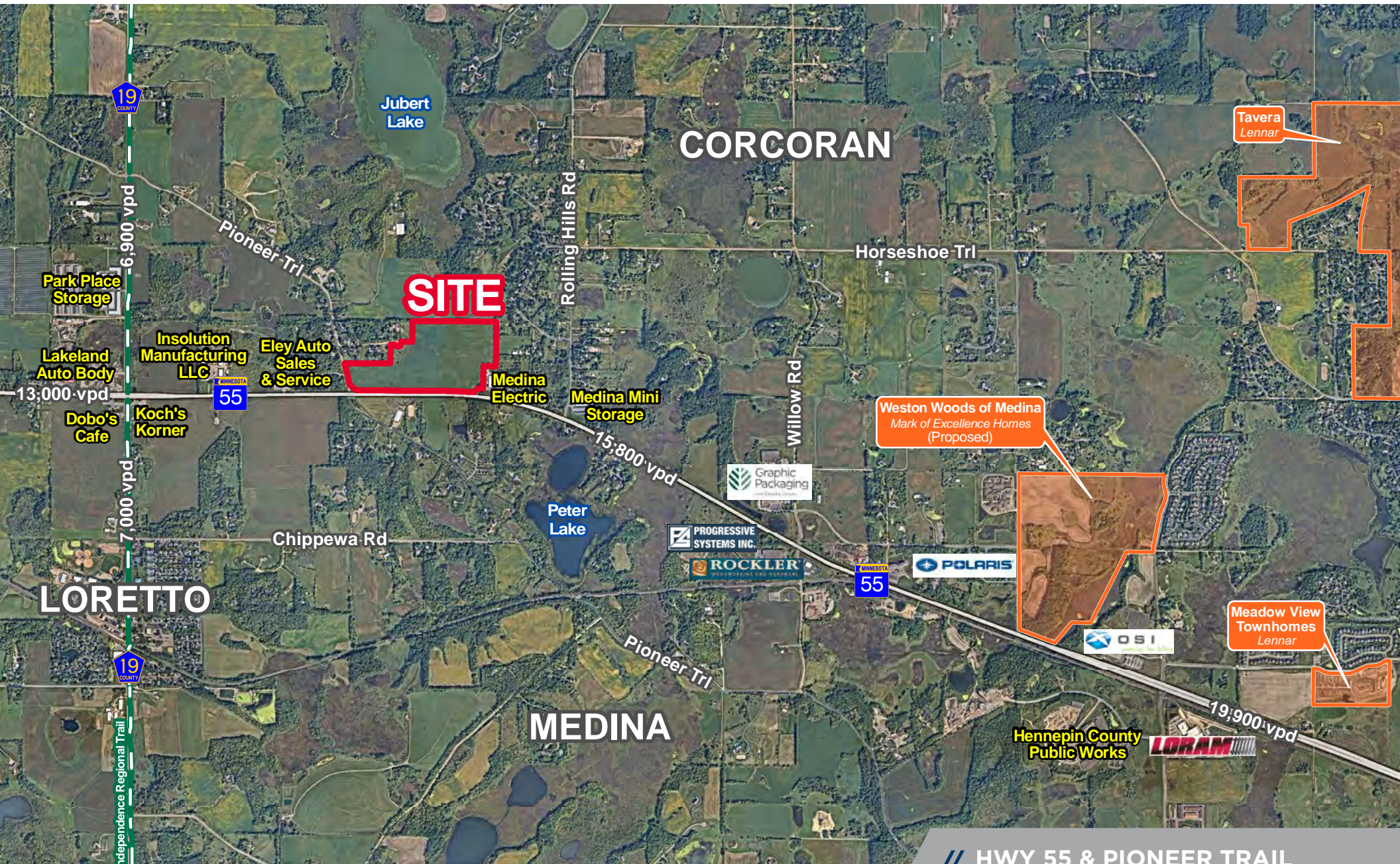
// PROPERTY INFORMATION MEDINA

LOT SIZE
56.49 ACRES

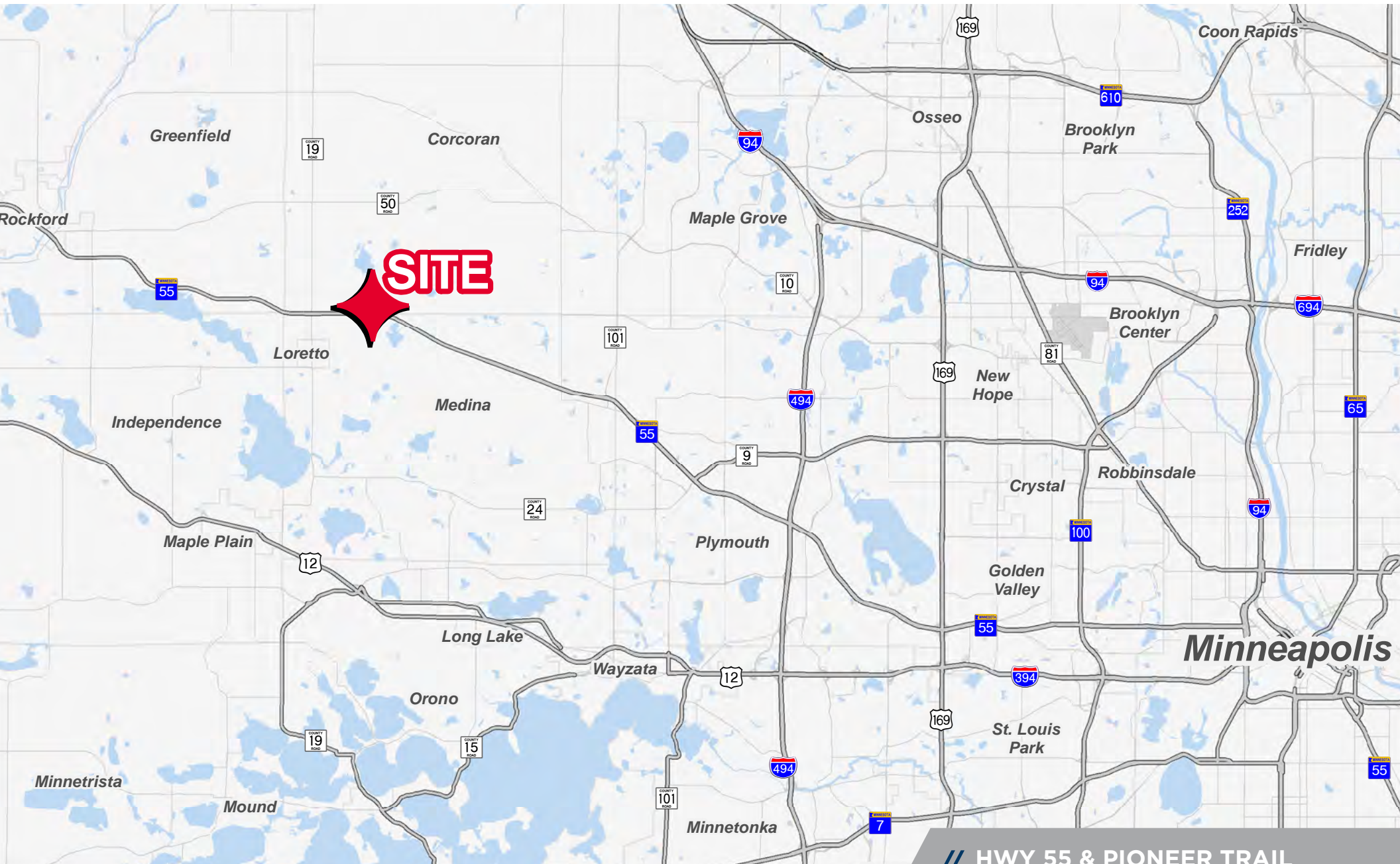
ZONING
BUSINESS PARK, PLANNED
INDUSTRIAL & RETAIL

PID #	TAXES
3211923430006	\$3,635.62
3211923430005	\$4,587.82
3211923340013	\$2,072.26
3211923340007	\$171.54
TOTAL	\$10,467.24

DEMOGRAPHICS	1 MILE	3 MILE	5 MILE
Population	498	4,166	19,596
Households	170	1,490	6,790
Average HH Income	\$185,841	\$182,955	\$171,817
Daytime Population	239	2,732	9,977







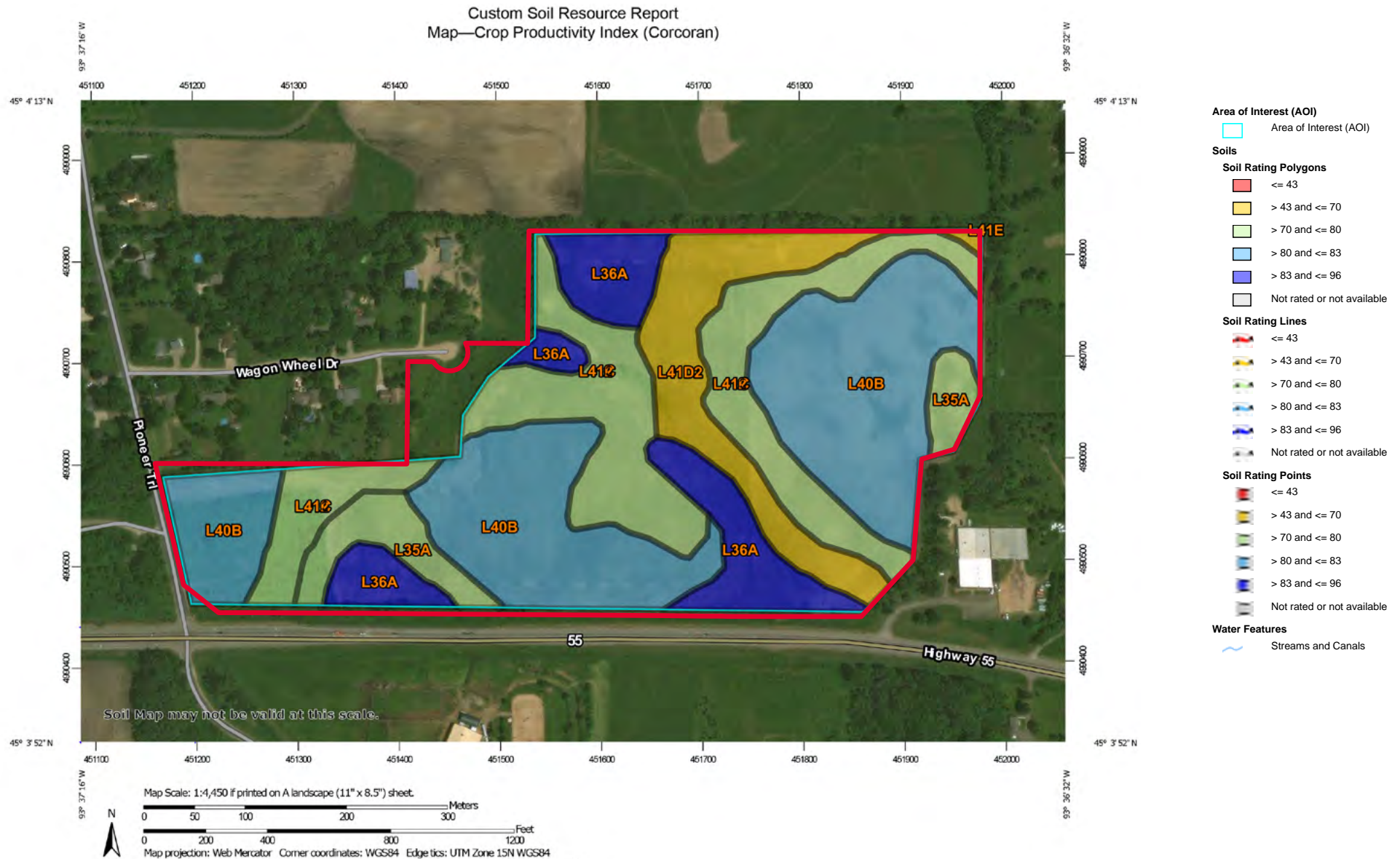
6





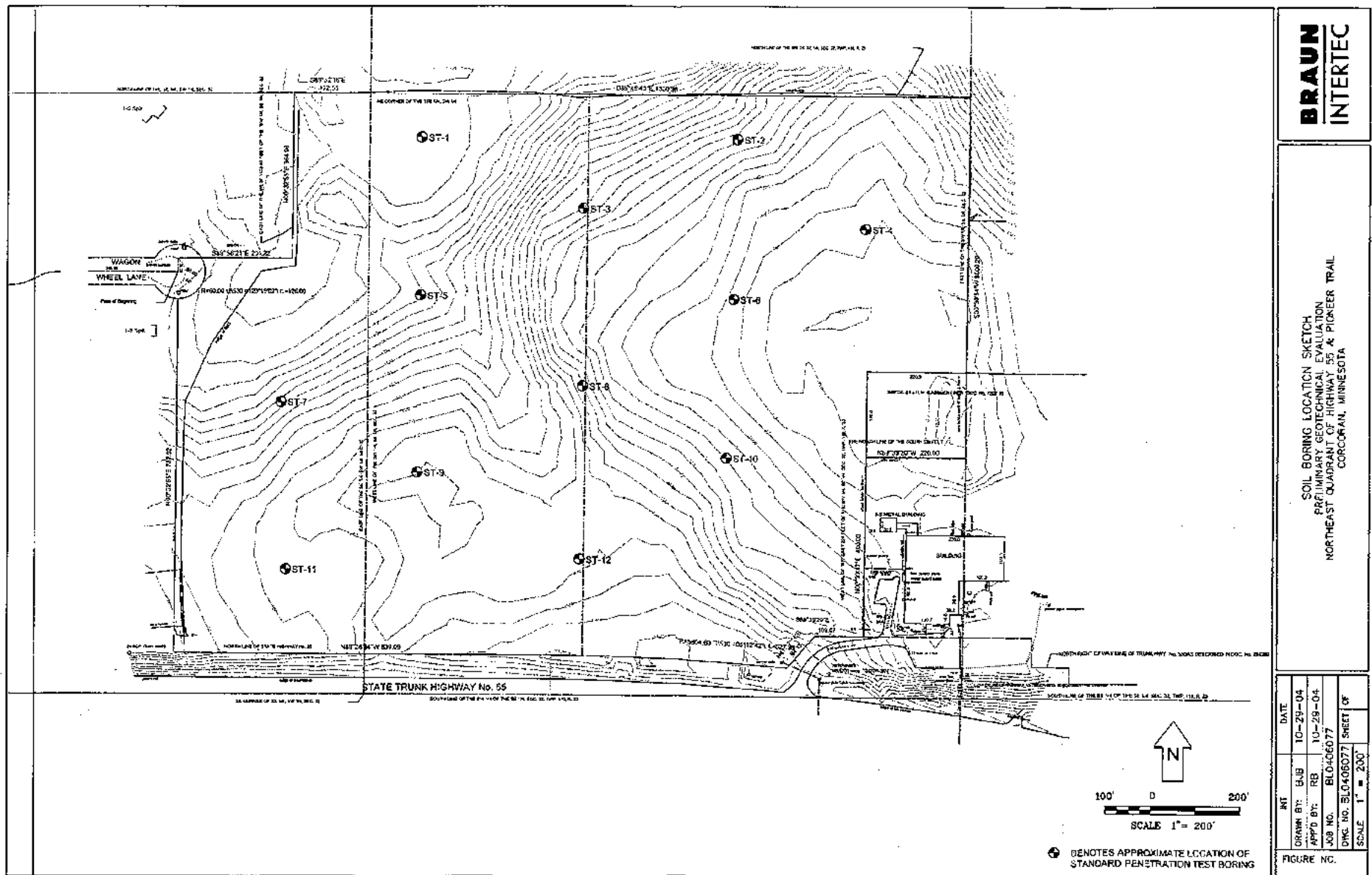


// SOIL REPORT



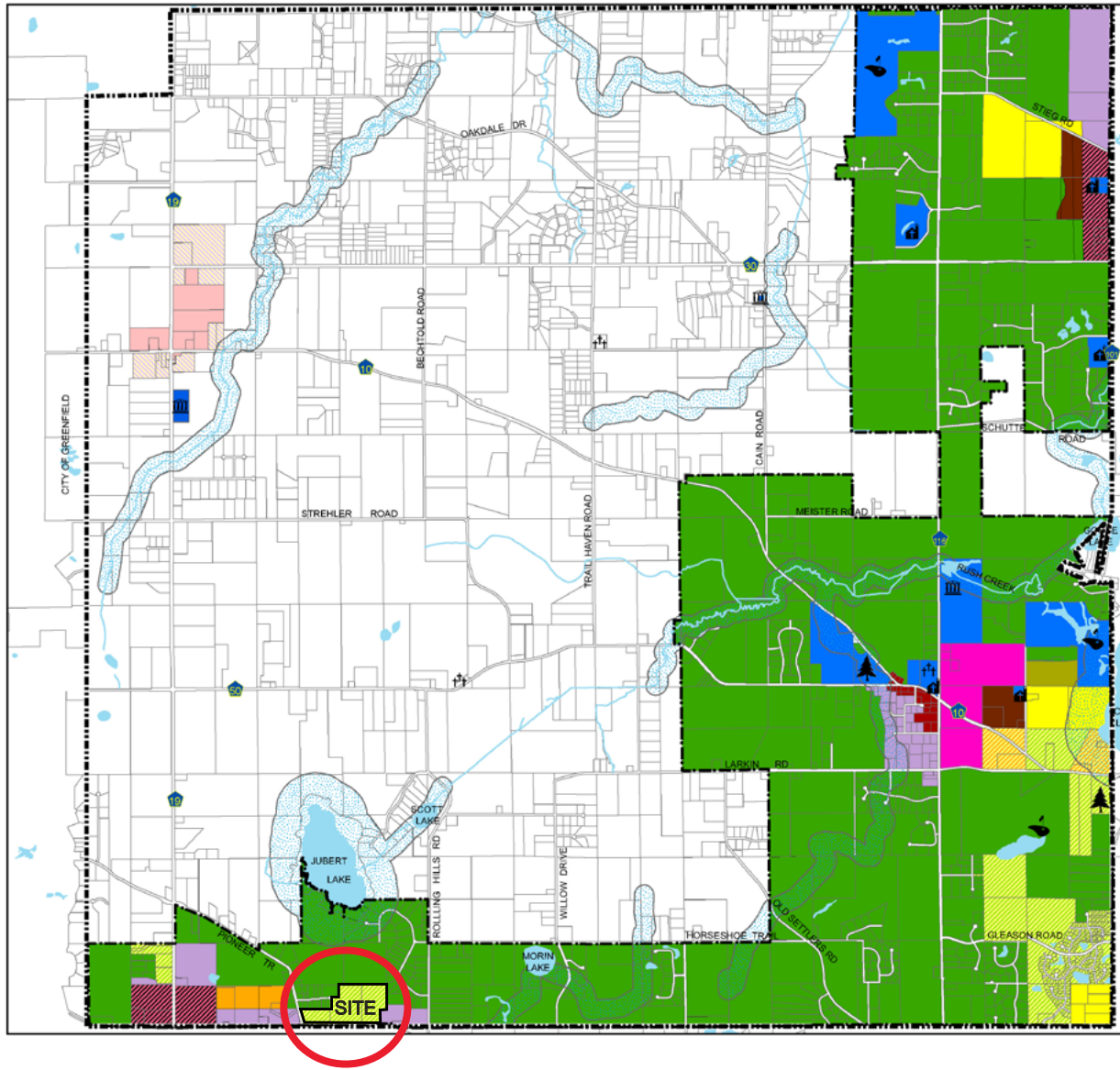
[CLICK ON MAP FOR PRINTABLE IMAGE](#)

// BORINGS



[CLICK ON PLAN FOR PRINTABLE IMAGE](#)

// ZONING MAP



CITY OF CORCORAN Official Zoning Map

Zoning Districts:

- UR Urban Reserve
- RR Rural Residential
- RSF-1 Single Family Residential 1
- RSF-2 Single Family Residential 2
- RSF-3 Single and Two Family Residential 3
- RMF-1 Medium Density Residential
- RMF-2 Mixed Residential
- RMF-3 High Density Residential
- MP Manufactured Home Park
- P-I Public / Institutional
- TCR Transitional Rural Commercial
- CR Rural Commercial
- C-1 Neighborhood Commercial
- C-2 Community Commercial
- DMU Downtown Mixed Use
- GMU General Mixed Use
- BP Business District
- I-1 Light Industrial
- PUD **Planned Unit Development**

- Cemetery
- Church
- Golf Course
- Government Building
- Public Park
- City Limit
- 2030 Metropolitan Urban Service Area
- Open Water
- Shoreland Overlay District
- Parcels

3,000 1,500 0 3,000 Feet

Updated January 2018
Adopted June 2011

[CLICK ON MAP FOR PRINTABLE IMAGE](#)

INDUSTRIAL BTS OPPORTUNITY

56 ACRES FOR SALE

CORCORAN



CONTACT

JON RAUSCH
Executive Director
+1 952 893 8251
jon.rausch@cushwake.com

LUKE APPERT
Executive Director
+1 952 893 8238
luke.appert@cushwake.com

BEN DREW
Senior Associate
+1 952 837 8553
ben.drew@cushwake.com

THEO PETRIE
Associate
+1 763 234 6362
theo.petrie@cushwake.com



visit us at: landmnwi.com

©2022 Cushman & Wakefield. All rights reserved. The material in this presentation has been prepared solely for information purposes, and is strictly confidential. Any disclosure, use, copying or circulation of this presentation (or the information contained within it) is strictly prohibited, unless you have obtained Cushman & Wakefield's prior written consent. The views expressed in this presentation are the views of the author and do not necessarily reflect the views of Cushman & Wakefield. Neither this presentation nor any part of it shall form the basis of, or be relied upon in connection with any offer, or act as an inducement to enter into any contract or commitment whatsoever. NO REPRESENTATION OR WARRANTY IS GIVEN, EXPRESS OR IMPLIED, AS TO THE ACCURACY OF THE INFORMATION CONTAINED WITHIN THIS PRESENTATION, AND CUSHMAN & WAKEFIELD IS UNDER NO OBLIGATION TO SUBSEQUENTLY CORRECT IT IN THE EVENT OF ERRORS.