



PRIOR LAKE, MN

4.2 ACRES FOR SALE

BEN DREW
Senior Associate
+1 952 837 8553
ben.drew@cushwake.com



EAGLE CREEK AVENUE SE PRIOR LAKE, MN

Property Highlights

- Commercial development land adjacent to Kwik Trip and KinderCare
- Utilities to site, no wetlands on property
- 15,000+ vehicles per day on Eagle Creek Avenue

Property Information

Total Acres	4.2		
	<u>PID #</u>	<u>Acres</u>	<u>Taxes</u>
	255130010	0.9	\$8,156
	255440020	3.3	\$32,350
Zoning	C-2 General Business		
2040 Guided Land Use	C-CC Community Retails Shopping		

Demographics (2022)

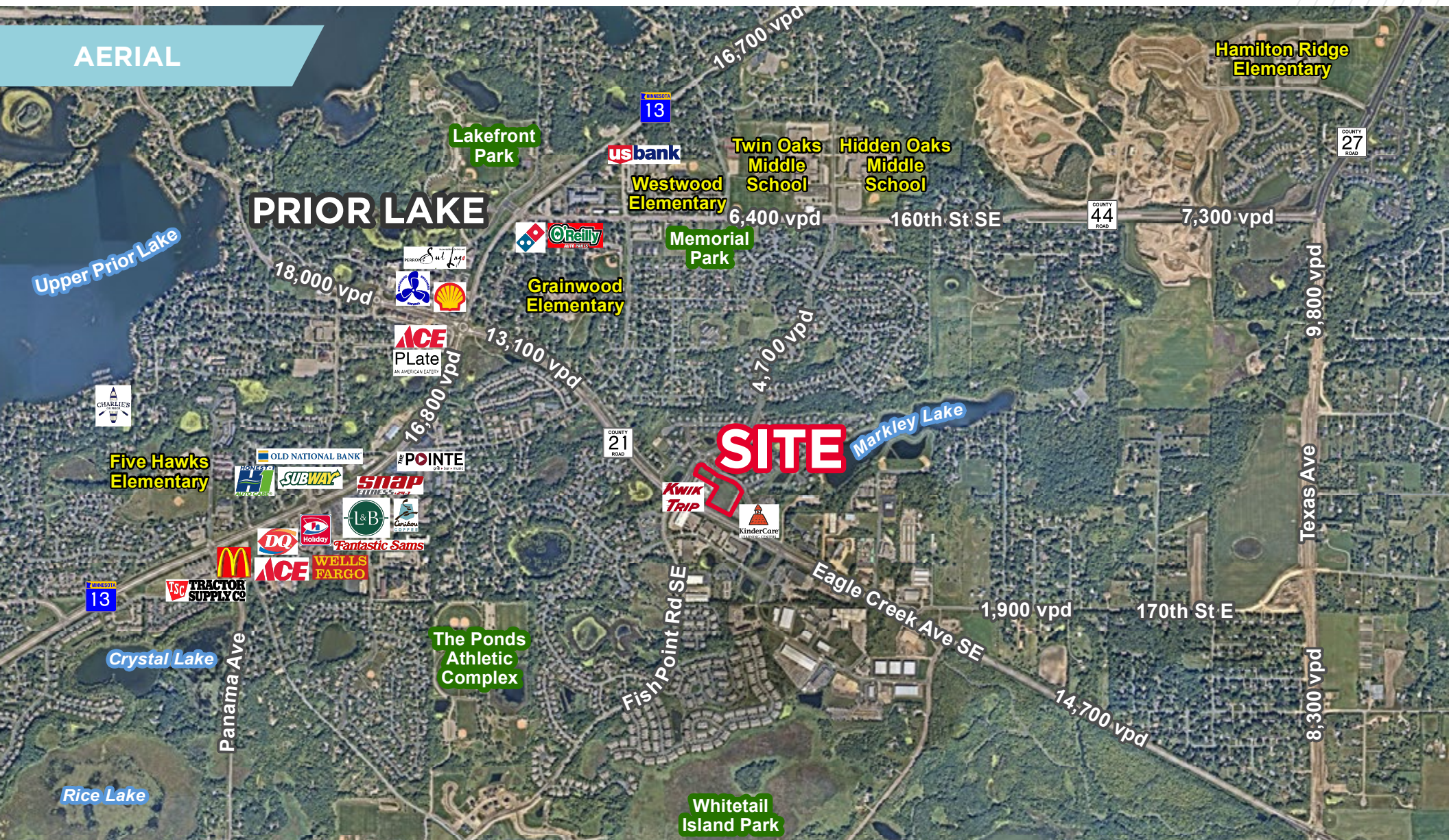
	1 Mile	3 Miles	5 Miles
Population	6,699	34,106	72,425
Households	2,735	12,447	25,244
Average HH Income	\$130,675	\$162,975	\$168,251
Daytime Population	3,046	6,316	28,566



AERIAL



AERIAL



EAGLE CREEK AVENUE SE

PRIOR LAKE, MN

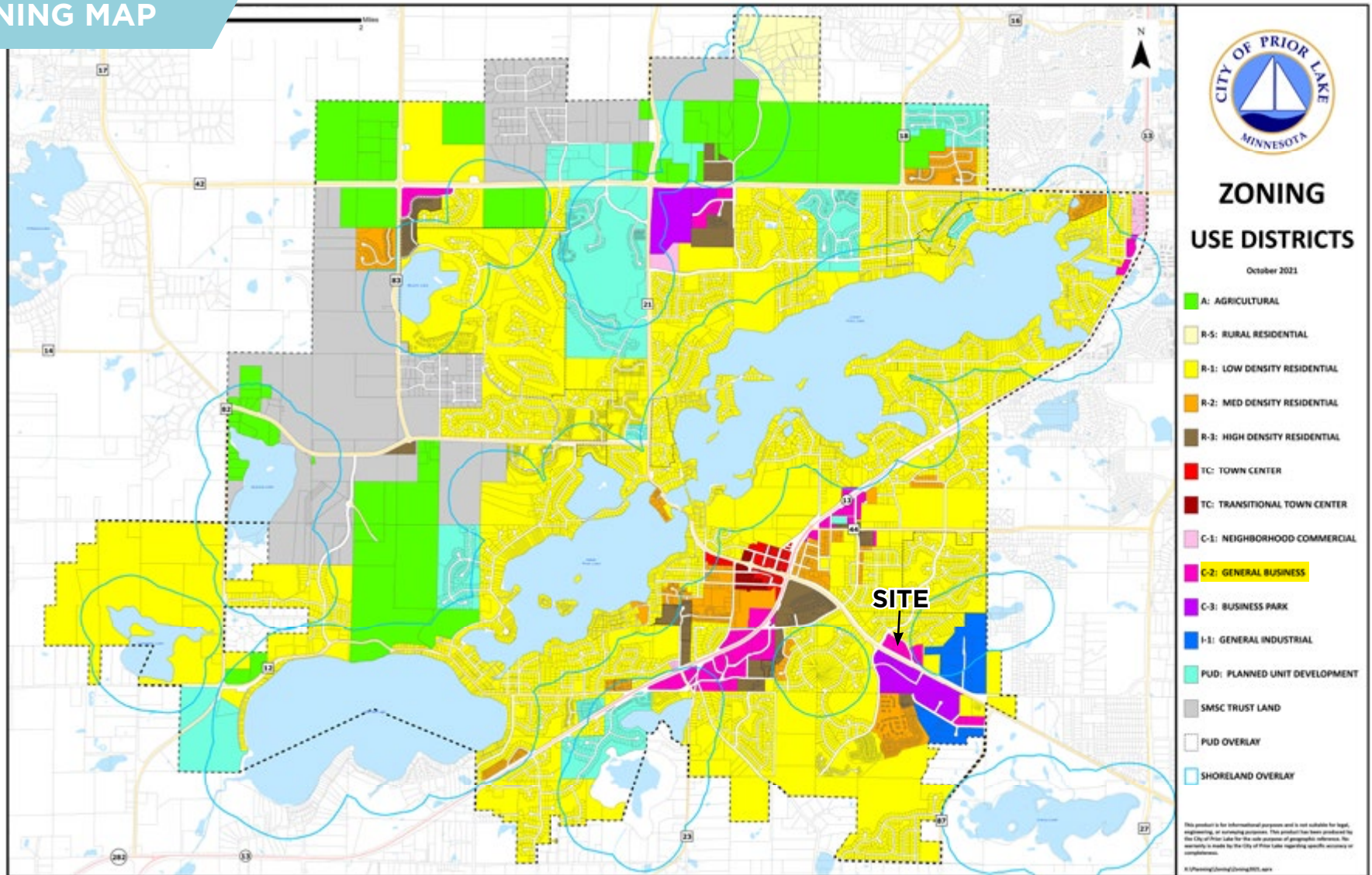
AERIAL



EAGLE CREEK AVENUE SE

PRIOR LAKE, MN

ZONING MAP

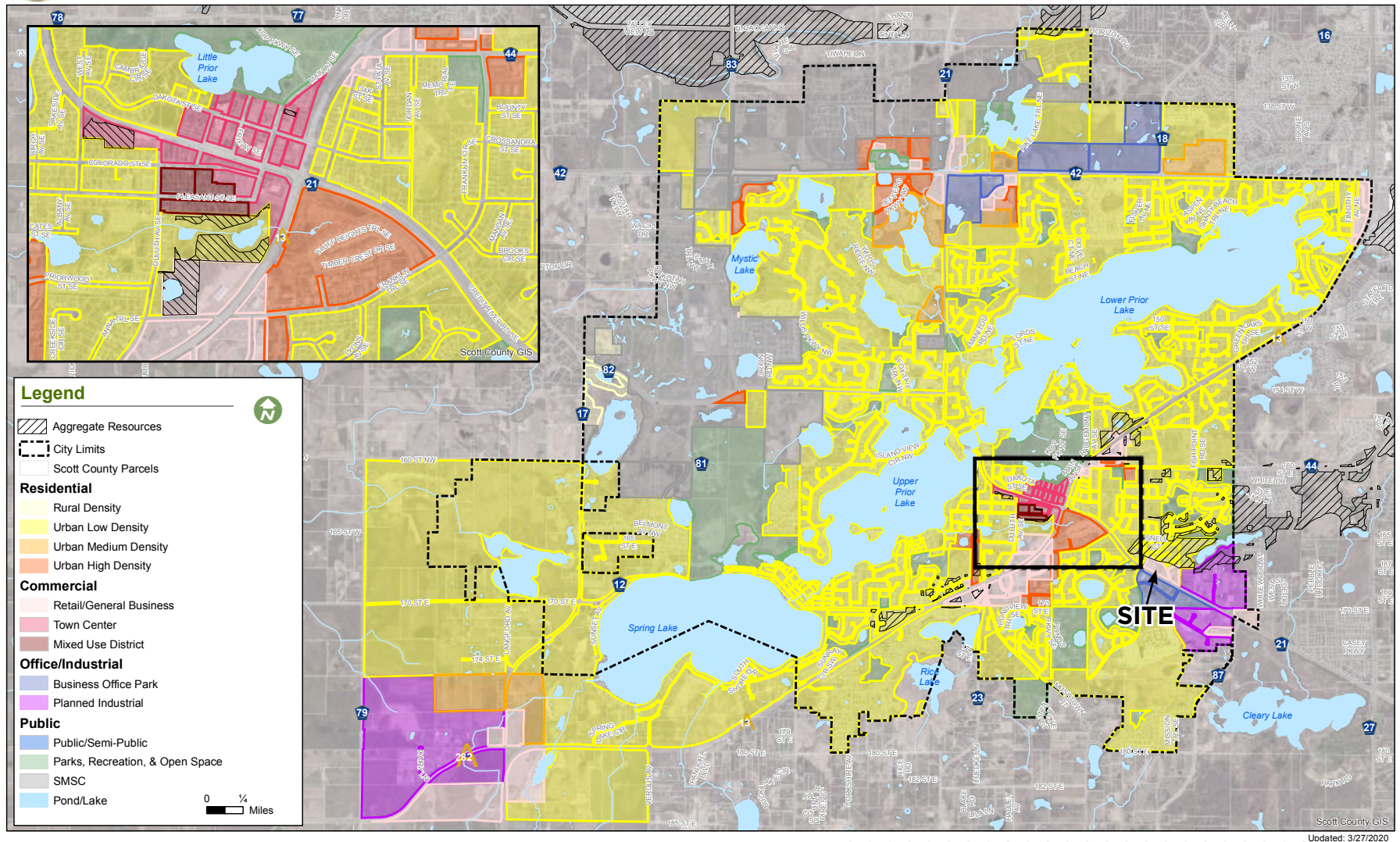


[CLICK ON MAP FOR PRINTABLE IMAGE](#)

EAGLE CREEK AVENUE SE

PRIOR LAKE, MN

LAND USE PLAN



[CLICK ON MAP FOR PRINTABLE IMAGE](#)



FOR MORE INFORMATION, CONTACT:

BEN DREW

Senior Associate

+1 952 837 8553

ben.drew@cushwake.com

©2023 Cushman & Wakefield. All rights reserved. The material in this presentation has been prepared solely for information purposes, and is strictly confidential. Any disclosure, use, copying or circulation of this presentation (or the information contained within it) is strictly prohibited, unless you have obtained Cushman & Wakefield's prior written consent. The views expressed in this presentation are the views of the author and do not necessarily reflect the views of Cushman & Wakefield. Neither this presentation nor any part of it shall form the basis of, or be relied upon in connection with any offer, or act as an inducement to enter into any contract or commitment whatsoever. NO REPRESENTATION OR WARRANTY IS GIVEN, EXPRESS OR IMPLIED, AS TO THE ACCURACY OF THE INFORMATION CONTAINED WITHIN THIS PRESENTATION, AND CUSHMAN & WAKEFIELD IS UNDER NO OBLIGATION TO SUBSEQUENTLY CORRECT IT IN THE EVENT OF ERRORS.

