

FOR LEASE
158,440 SF



5171 MARITIME ROAD
JEFFERSONVILLE, IN 47103

LOCATED IN PORT OF JEFFERSONVILLE

PROPERTY HIGHLIGHTS

158,440 sf available

Up to 13,973 sf of office

24' clear height

Six (6) dock doors
- Four (4) fully-equipped

Two (2) 10' x 14' drive-in doors

One (1) 18' x 18' drive-in doors

LED lighting

480 volt; 4,000 amps; 3-phase

Compressed air lines throughtout

Three (3) 3-ton cranes (70')

Two (2) LVS ventilation fans

90+ parking spaces

30 acres

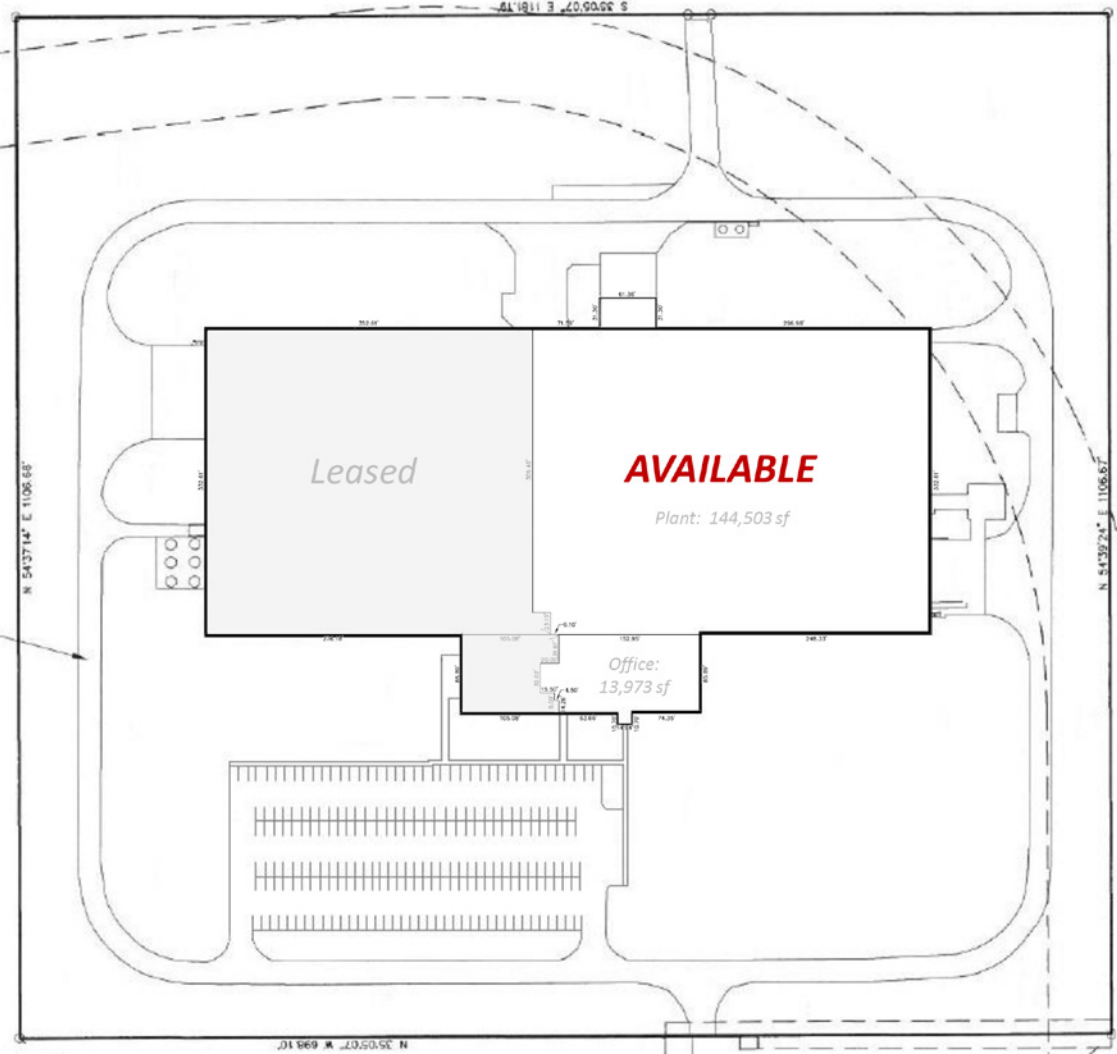
Secured/gates/fenced access

Convenient access to I-265, Lewis & Clark Bridge, and heavy haul road from Port to River Ridge



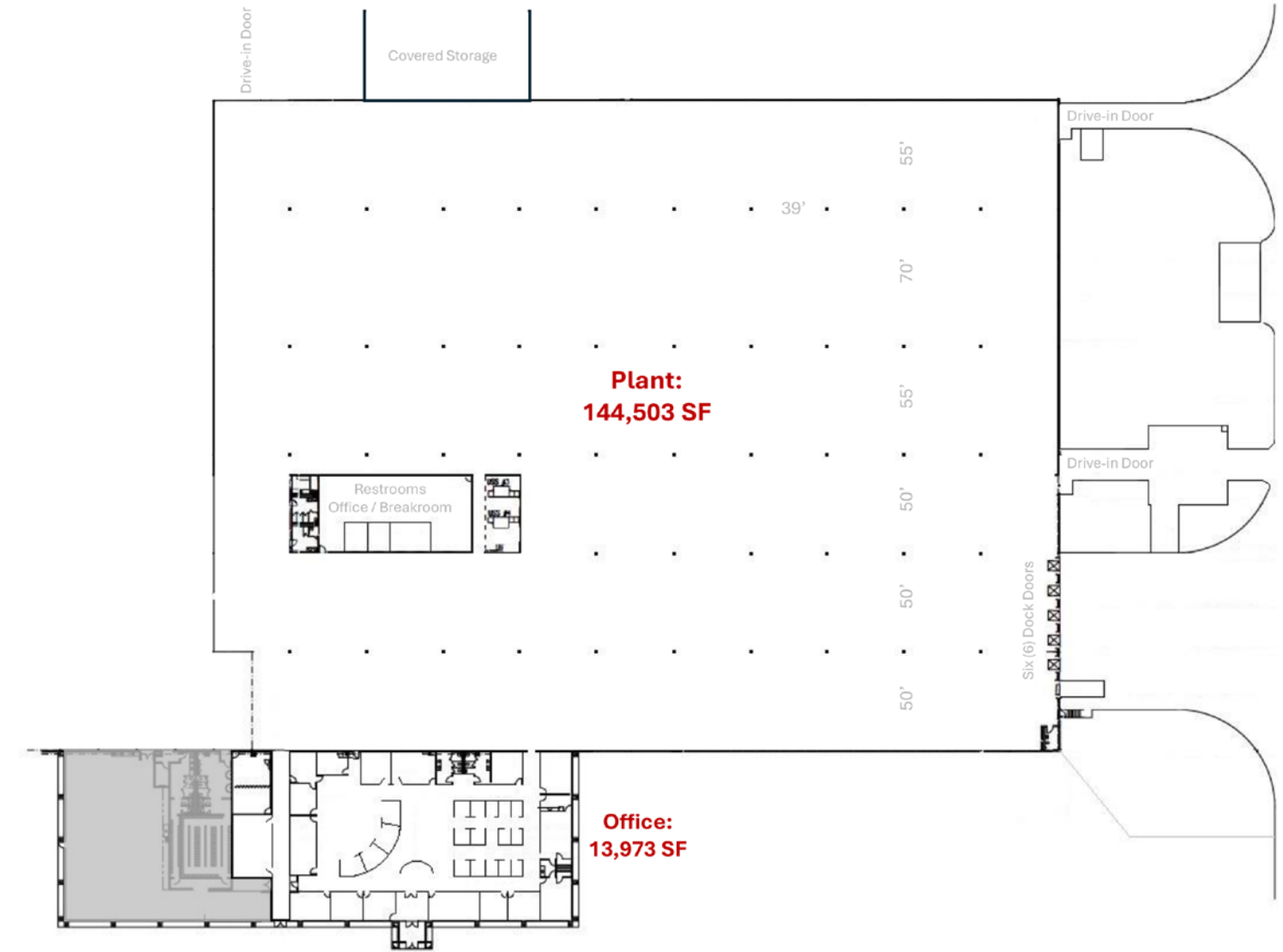
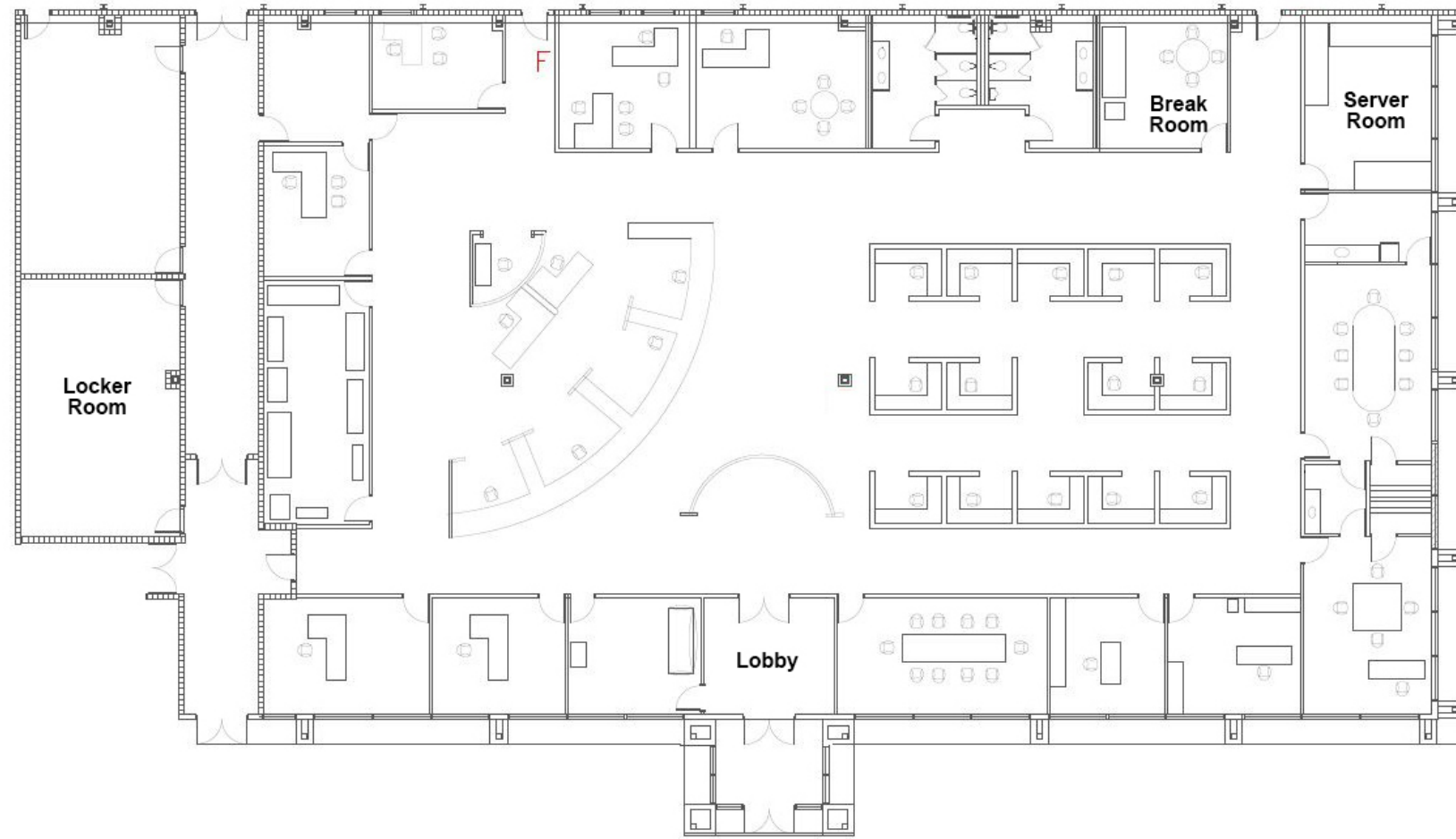
AERIAL MAP

158,440 SF



SITE PLAN
158,440 SF

OFFICE LAYOUT



PLANT LAYOUT

5171 MARITIME RD | JEFFERSONVILLE, IN 47130

A DRIVING WORKFORCE

The exponential growth of Southern Indiana's infrastructure and workforce numbers have greatly contributed to its steady success as a major industrial hub in the area.



1,191
POPULATION
Within 1 Mile



\$96,046
AVG. HH INCOME
Within 1 Mile

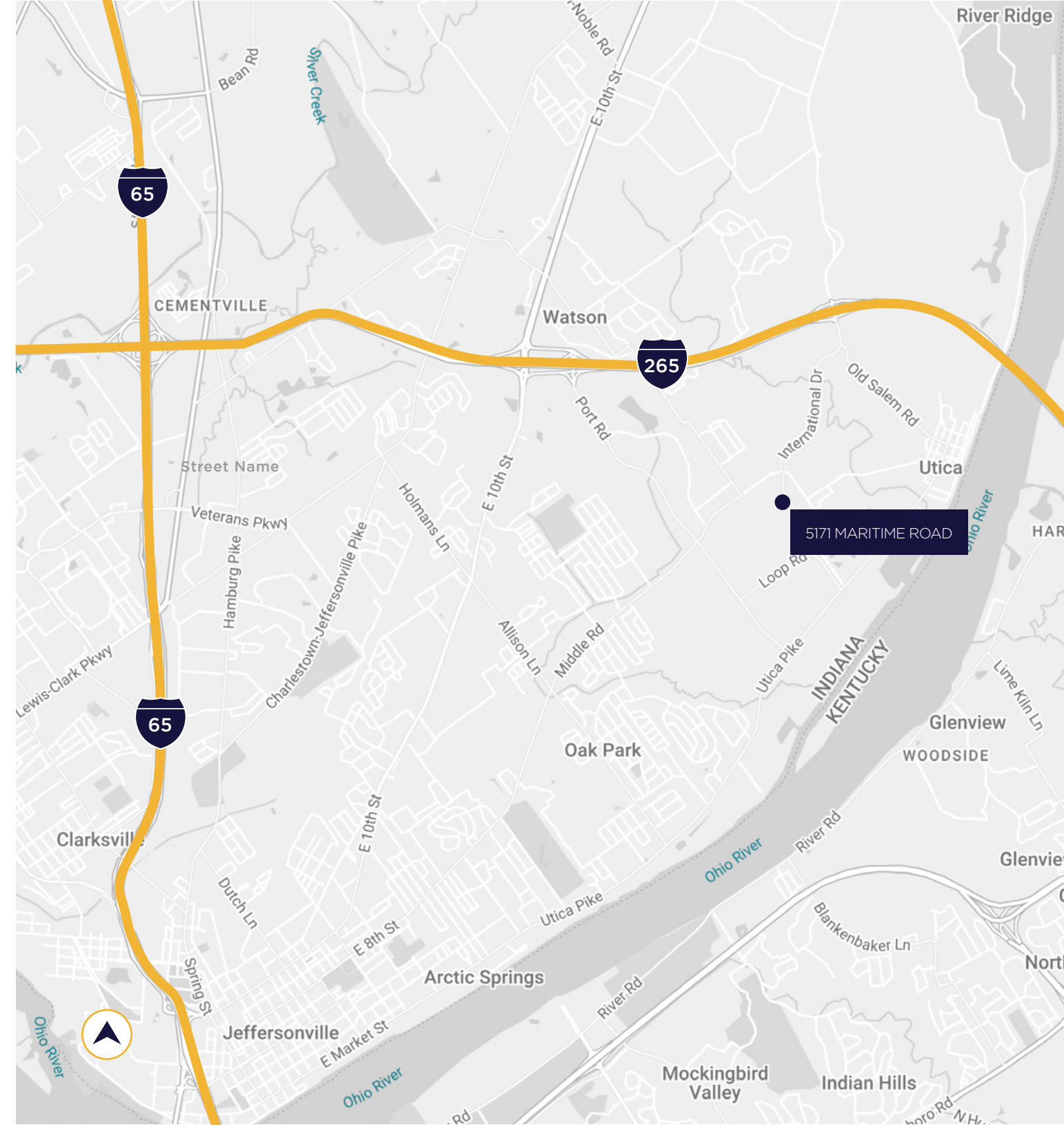
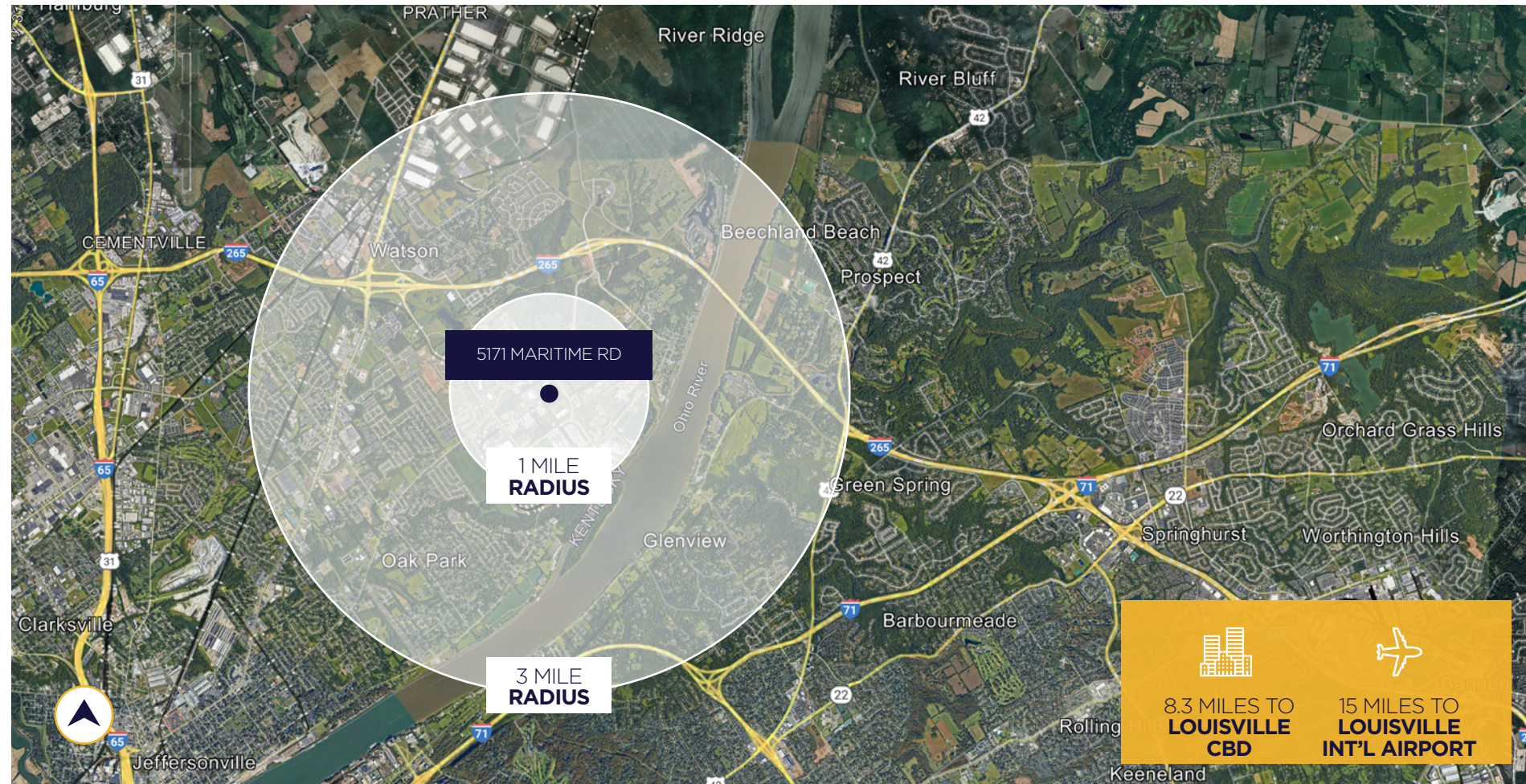


1,889
OF EMPLOYEES
Within 1 Mile

31,856
POPULATION
Within 3 Miles

\$112,945
AVG. HH INCOME
Within 3 Miles

13,131
OF EMPLOYEES
Within 3 Miles



2 MILES
TO I-265

4 MILES
TO RIVER RIDGE
COMMERCE CENTER

4.3 MILES
TO LEWIS & CLARK BRIDGE

5 MILES
TO I-65

9.5 MILES
TO I-71

CONTACT INFORMATION

JAKE F. MILLS, SIOR

jmills@commercialkentucky.com

+1 502 719 3252

GREG CHARMOLI

gcharmoli@commercialkentucky.com

+1 502 719 3238



©2024 Cushman & Wakefield. All rights reserved. The information contained in this communication is strictly confidential. This information has been obtained from sources believed to be reliable but has not been verified. NO WARRANTY OR REPRESENTATION, EXPRESS OR IMPLIED, IS MADE AS TO THE CONDITION OF THE PROPERTY (OR PROPERTIES) REFERENCED HEREIN OR AS TO THE ACCURACY OR COMPLETENESS OF THE INFORMATION CONTAINED HEREIN, AND SAME IS SUBMITTED SUBJECT TO ERRORS, OMISSIONS, CHANGE OF PRICE, RENTAL OR OTHER CONDITIONS, WITHDRAWAL WITHOUT NOTICE, AND TO ANY SPECIAL LISTING CONDITIONS IMPOSED BY THE PROPERTY OWNER(S). ANY PROJECTIONS, OPINIONS OR ESTIMATES ARE SUBJECT TO UNCERTAINTY AND DO NOT SIGNIFY CURRENT OR FUTURE PROPERTY PERFORMANCE.

Independently Owned & Operated / A Member of the Cushman & Wakefield Alliance