

299
PARK AVENUE



**INCREDIBLE CORNER RETAIL OPPORTUNITY
ON PARK AVENUE
IN THE HEART OF MIDTOWN AT GRAND CENTRAL**



**CUSHMAN &
WAKEFIELD**

299 PARK AVENUE

East block of Park Avenue
between East 48th Street and East 49th Street

Availabilities

| | | |
|---------------|----------|----------------|
| Ground Level: | 2,860 SF | Ceiling Height |
| Mezzanine: | 1,228 SF | 13'1" - 26' |
| Total: | 4,088 SF | 13'1" |

| | |
|--------------|----------------------|
| Possession: | Immediate |
| Lease Type: | Sublease – Long Term |
| Asking Rent: | Upon Request |

COMMENTS:

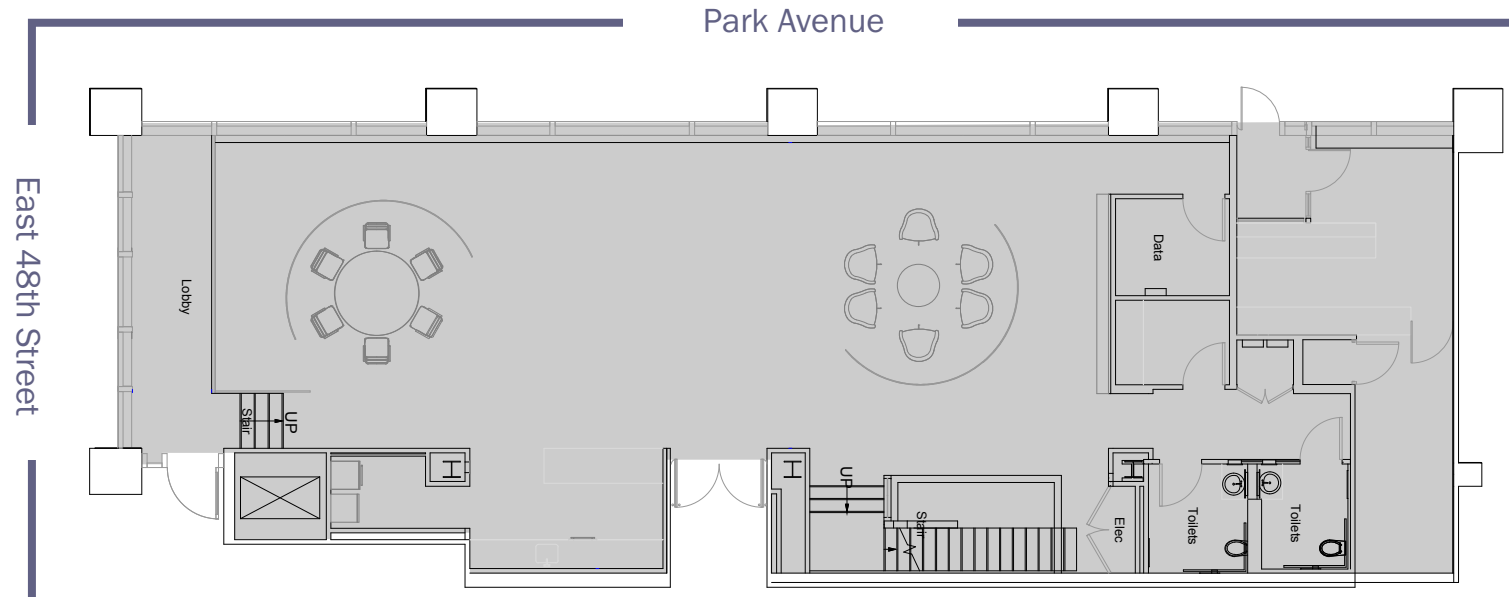
- Built reception/meeting space to be delivered as-is with electric and HVAC in place
- North side retail



FLOORPLANS

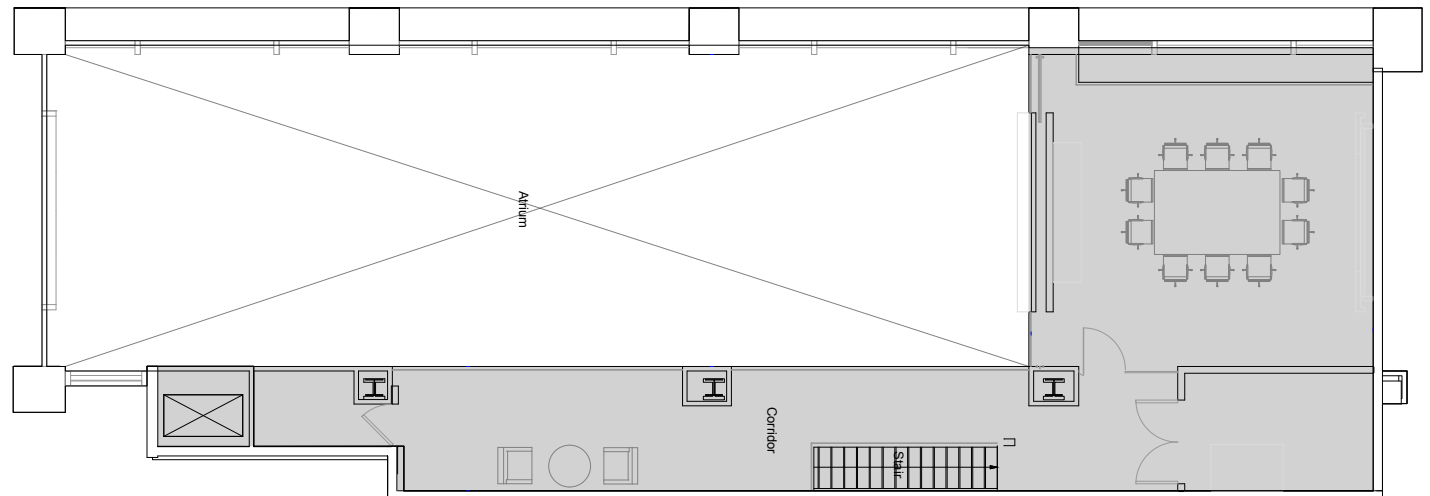
Ground Level:
2,860 SF

Ceiling Height: 13'1"–26'



Mezzanine:
1,228 SF

Ceiling Height: 13'1"



LOCATION

STEPS AWAY FROM ONE OF THE MOST ICONIC & RECOGNIZABLE TRANSPORTATION DESTINATIONS.

750,000 DAILY VISITORS

Retail

- 1 Saks Fifth Avenue
- 2 Paul Stuart
- 3 Coach
- 4 H&M
- 5 NBA Store
- 6 Barnes & Noble
- 7 Urban Outfitters
- 8 Alden Shoes
- 9 Charles Tyrwhitt
- 10 Zara
- 11 & Other Stories
- 12 Adidas
- 13 Aritzia
- 14 Tend

Restaurants

- 1 Bobby Van's Steakhouse
- 2 Lea Wine Bar
- 3 Urban Space
- 4 Sweetgreen
- 5 Pavillion
- 6 Morton's
- 7 Avra
- 8 Lobster Club
- 9 Monkey Bar

Hotel


- 1 Waldorf Astoria
- 2 The Library Hotel
- 3 Intercontinental

Points of Interest

- 1 Bryant Park
- 2 New York Public Library
- 3 The Yale Club
- 4 NY Racket Club

Access to

 Metro-North Railroad

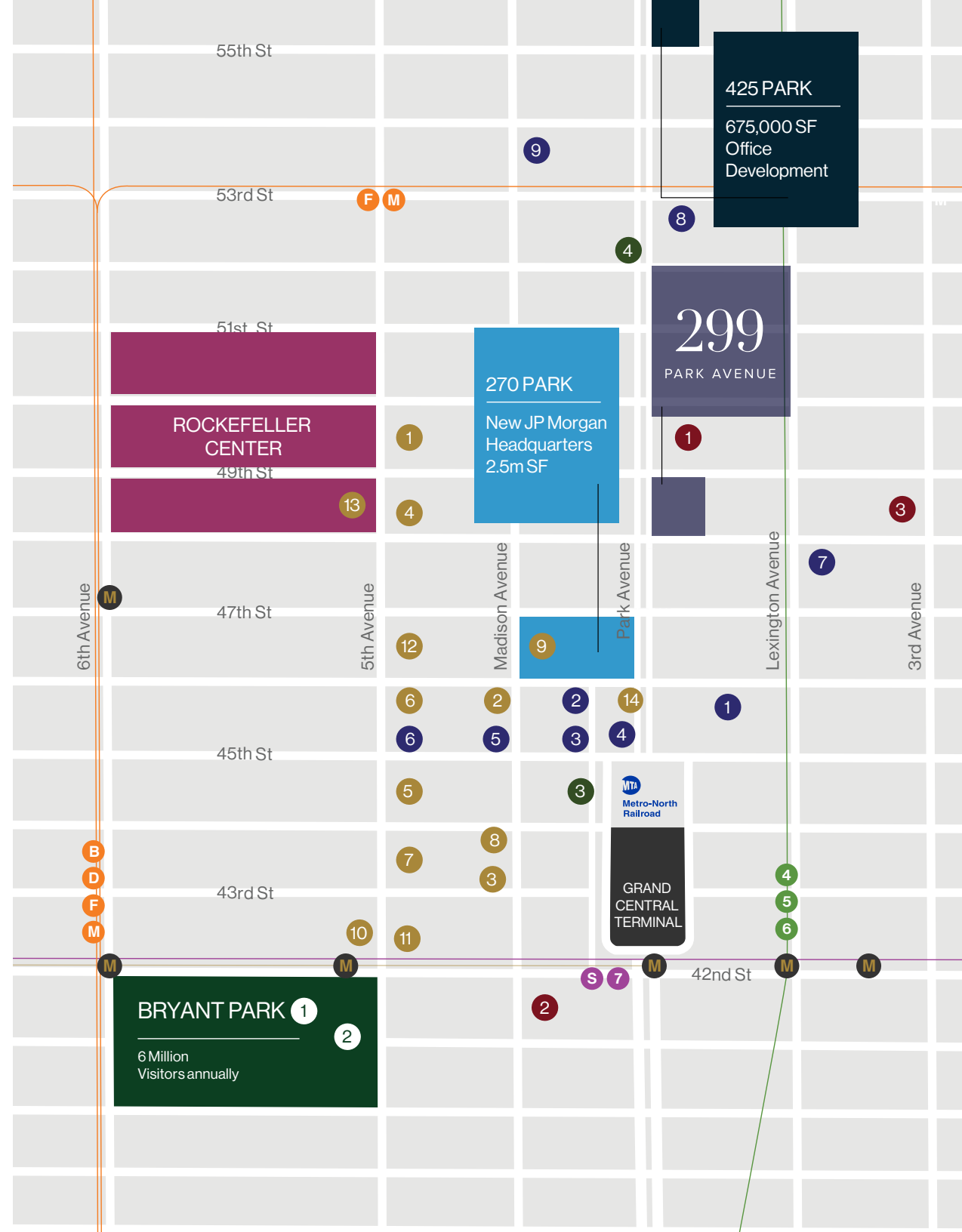
· **31** commuter and
15 city bus routes 

· **2 Million** taxis a year

· Buses to and from
3 Airports

7 Subway lines



299

PARK AVENUE



KENJI OTA

212 841 5909
kenji.ota@cushwake.com

JENNIFER KONEFSKY

212 698 2608
jennifer.konefsky@cushwake.com

DALE SCHLATHER

212 841 5970
dale.schlather@cushwake.com

GREG HERMAN

212 841 7828
greg.herman@cushwake.com



**CUSHMAN &
WAKEFIELD**