

1710 INDUSTRIAL RD

SAN CARLOS, CA

±14,825 SF

**FLEX OFFICE R&D
FACILITY
FOR LEASE**



MARC POPE
Vice Chair
+1 650 401 2131
marc.pope@cushwake.com

GARY BOITANO
Managing Director
+1 650 401 2122
gary.boitano@cushwake.com

CHRIS BAKER
Managing Director
+1 650 302 0266
chris.r.baker@cushwake.com



1710 INDUSTRIAL ROAD

SAN CARLOS, CA

PROPERTY HIGHLIGHTS

PROPOSED BUILDING AREA

LEVEL 1	±7,923 SF - Office ±6,902 SF - High Bay Warehouse
TOTAL	±14,825 SF

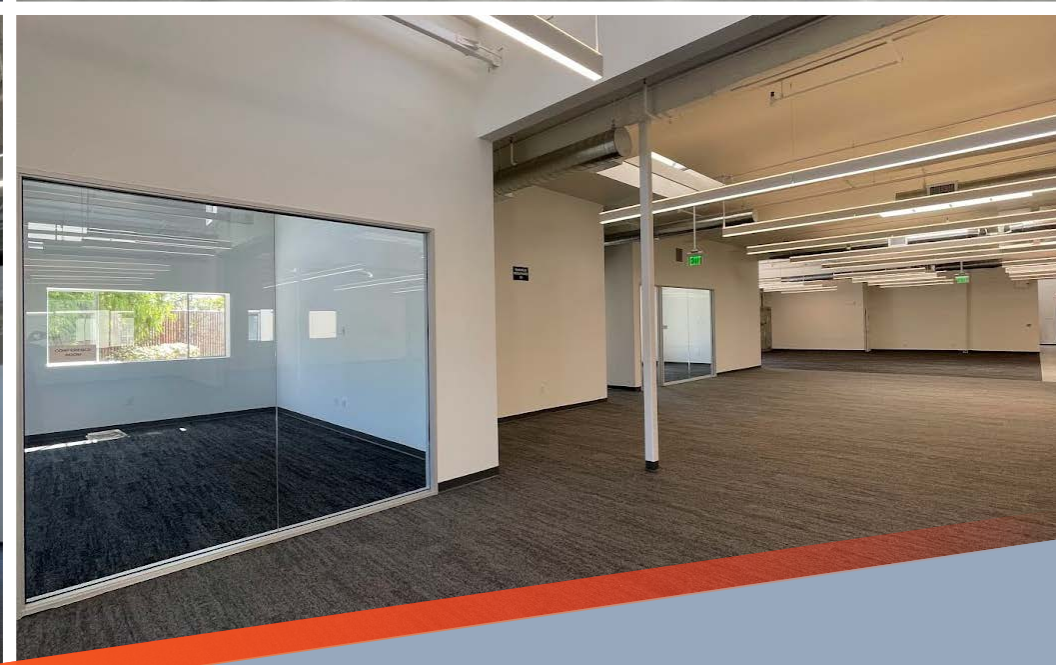
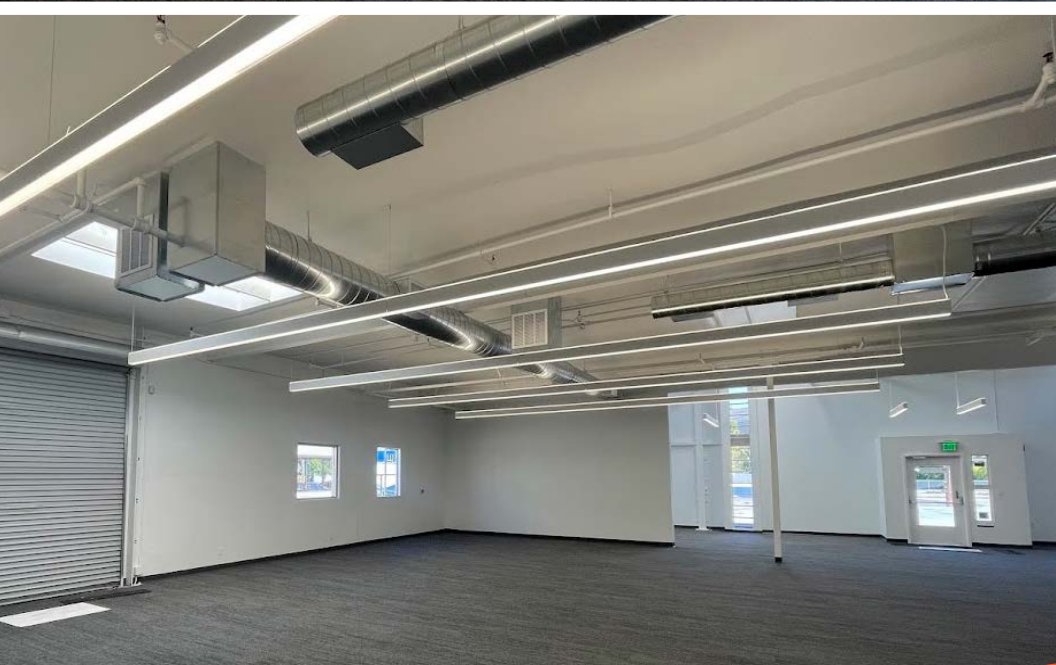
- Stand Alone Building
- Shipping & Receiving
- 800 Amps, 208/120V, 3 Phase 4-Wire Power
- 31 On-Site Parking Stalls
- 2 EV Charging Stalls
- Near Downtown San Carlos and Caltrain
- Immediate Access to Hwy 101
- New Building Improvements Underway
- Deliverable Early 2025

±14,825 SF

FLEX OFFICE R&D FACILITY FOR LEASE

1710 INDUSTRIAL ROAD

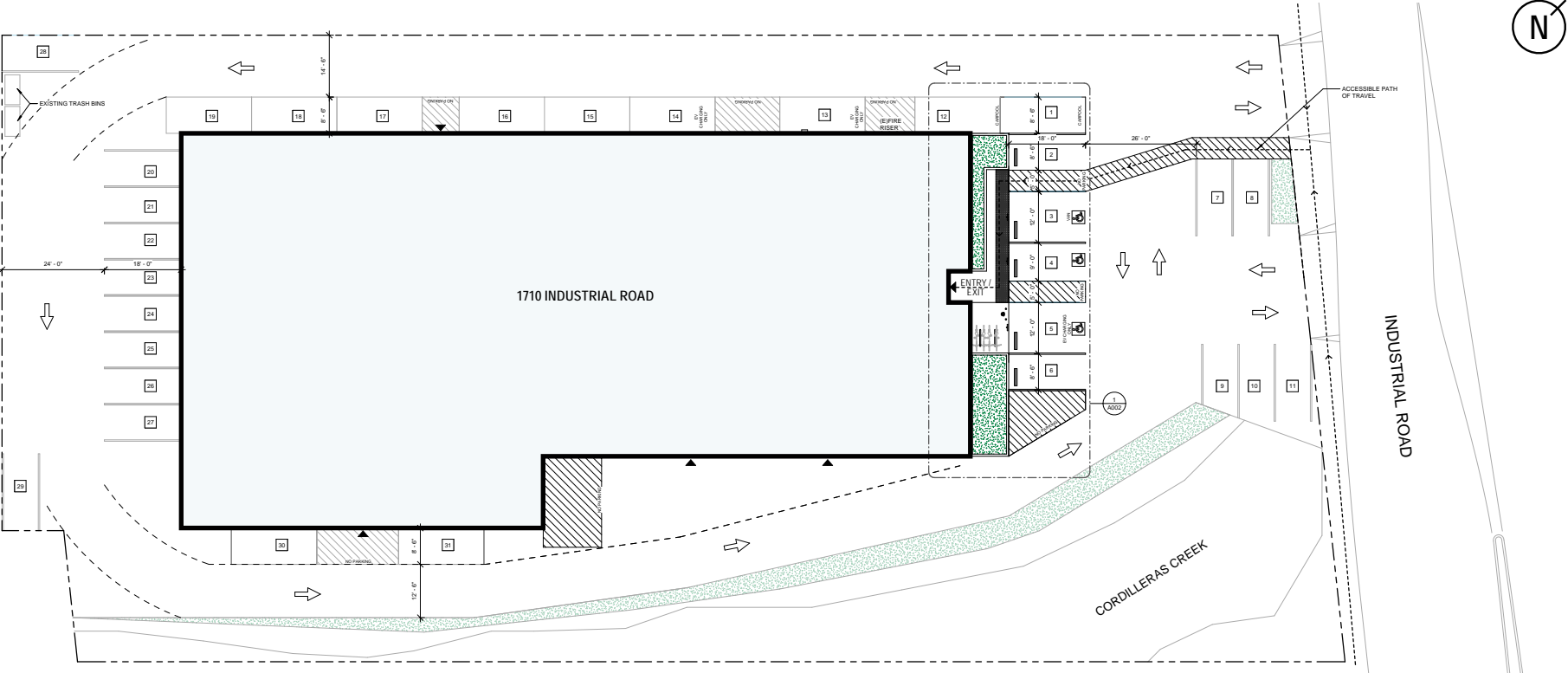
SAN CARLOS, CA



1710 INDUSTRIAL ROAD

SAN CARLOS, CA

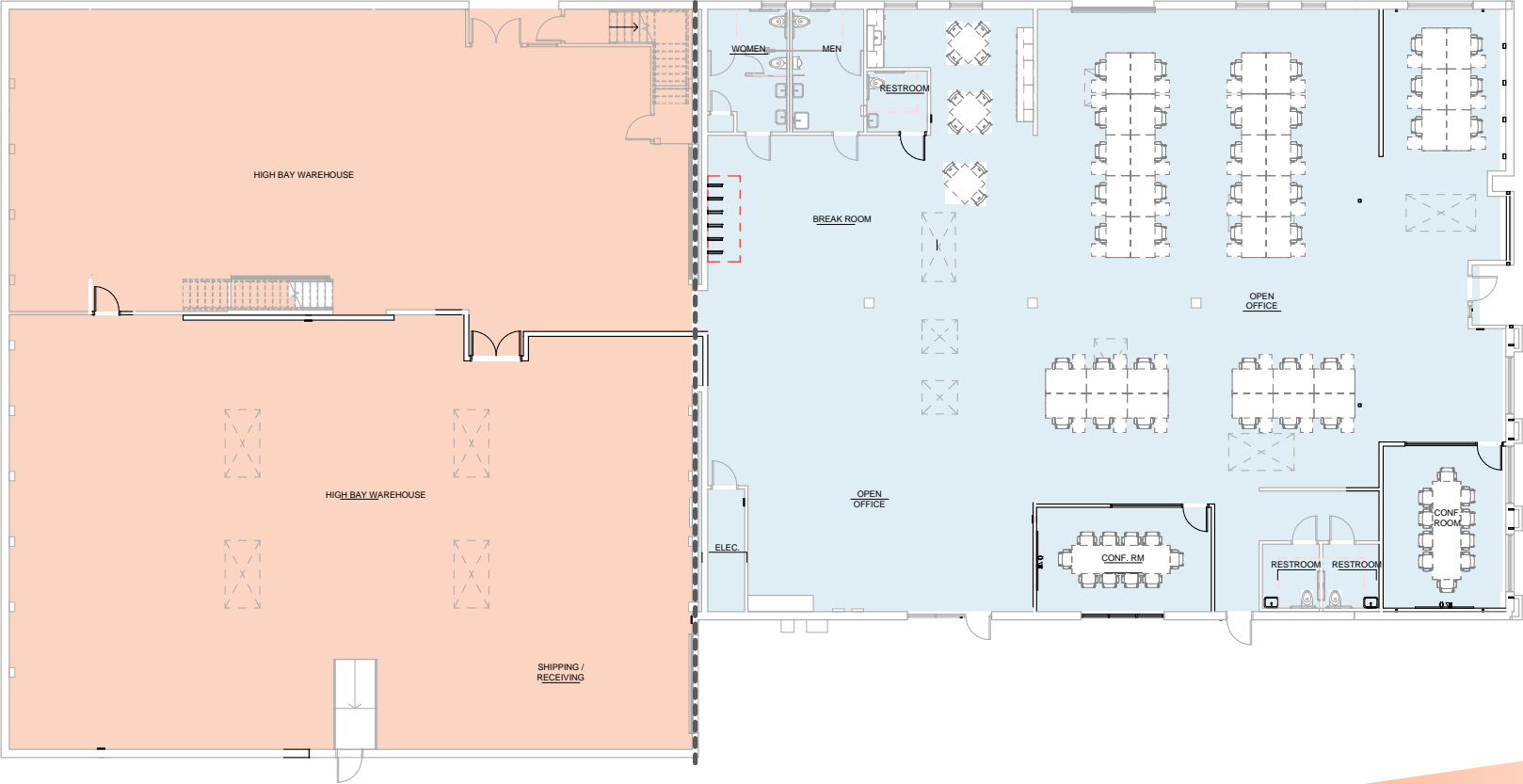
SITE PLAN



1710 INDUSTRIAL ROAD

SAN CARLOS, CA

FLOOR PLAN - LEVEL ONE



1710 INDUSTRIAL ROAD

SAN CARLOS, CA

SAN MATEO

BELMONT

SAN CARLOS

REDWOOD SHORES

SAN FRANCISCO BAY

Sea Cloud Park

Bair Island State Marine Park

Westpoint Harbor

1710 INDUSTRIAL ROAD

Walgreens TRADER JOE'S

NOB HILL FOODS
STARBUCKS
Bay Club CHASE
FIVE GUYS
Mendocino Farms
PROVIDENT CREDIT UNION
Bank of America

STARBUCKS
CHIPOTLE MEXICAN GRILL
Office DEPOT
WINGSTON
BEST BUY
West Marine
REI COOP
Jamba Juice

Lucky

KOHL'S
Sports Basement
DOLLAR TREE
JOANN
planet fitness
STARBUCKS
Applebee's GRILL + BAR
TACO BELL
SUBWAY

IN-N-OUT BURGER

THE HOME DEPOT
DOLLAR TREE

1710 INDUSTRIAL RD

SAN CARLOS, CA 94070

MARC POPE
Vice Chair
+1 650 401 2131
marc.pope@cushwake.com

GARY BOITANO
Managing Director
+1 650 401 2122
gary.boitano@cushwake.com

CHRIS BAKER
Managing Director
+1 650 320 0266
chris.r.baker@cushwake.com



**CUSHMAN &
WAKEFIELD**

1350 Bayshore Highway, Suite 900, Burlingame, CA 94010 | Cushmanwakefield.com

©2024 Cushman & Wakefield. All rights reserved. The information contained in this communication is strictly confidential. This information has been obtained from sources believed to be reliable but has not been verified. NO WARRANTY OR REPRESENTATION, EXPRESS OR IMPLIED, IS MADE AS TO THE CONDITION OF THE PROPERTY (OR PROPERTIES) REFERENCED HEREIN OR AS TO THE ACCURACY OR COMPLETENESS OF THE INFORMATION CONTAINED HEREIN, AND SAME IS SUBMITTED SUBJECT TO ERRORS, OMISSIONS, CHANGE OF PRICE, RENTAL OR OTHER CONDITIONS, WITHDRAWAL WITHOUT NOTICE, AND TO ANY SPECIAL LISTING CONDITIONS IMPOSED BY THE PROPERTY OWNER(S). ANY PROJECTIONS, OPINIONS OR ESTIMATES ARE SUBJECT TO UNCERTAINTY AND DO NOT SIGNIFY CURRENT OR FUTURE PROPERTY PERFORMANCE.