

# MISSION HILLS PLAZA

39488-39572 STEVENSON PLACE, FREMONT  
±1,259-4,693 SF OFFICE SPACES FOR LEASE



**Scott Dever**  
+1 408 615 3457  
scott.dever@cushwake.com  
Lic #01890552

**Walt Stephenson**  
+1 408 615 3458  
walt.stephenson@cushwake.com  
Lic #01793438



# MISSION HILLS PLAZA

## HIGHLIGHTS

- Office, Retail and Dental Spaces Available
- Campus-Like Setting, Adjacent to Central Park with Sports Amenities, Including Golf and Tennis
- C-O Zoning; More Information [Here](#)
- Elevator Served
- Fully Sprinklered
- ±4/1,000 Parking Ratio
- Convenient Location to Retail Services
- Easy Access to Freeways

**39488 STEVENSON PLACE - BUILDING A**

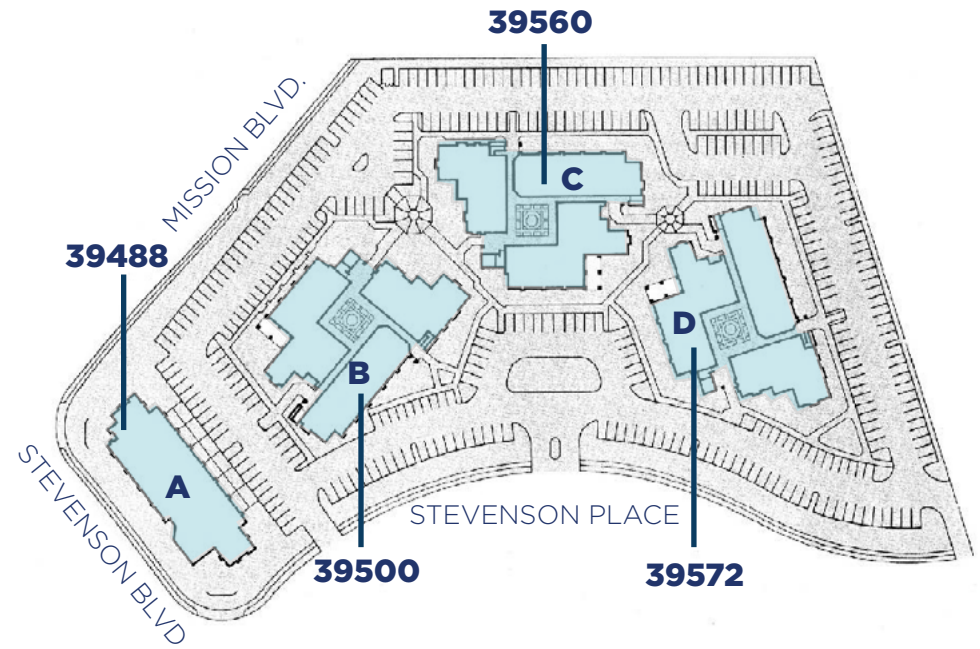
**39500 STEVENSON PLACE - BUILDING B**

**39560 STEVENSON PLACE - BUILDING C**

**39572 STEVENSON PLACE - BUILDING D**

## AVAILABLE

SUITE	BUILDING	USE	SIZE IN SF
<a href="#">SUITE 100</a>	A-39488	Office/Retail	±4,693
<a href="#">SUITE 203</a>	B-39500	Office	±1,259
<a href="#">SUITE 126</a>	D-39572	Office	±2,325
<a href="#">SUITE 222</a>	D-39572	Dental	±1,281
<a href="#">SUITE 231</a>	D-39572	Dental	±1,902

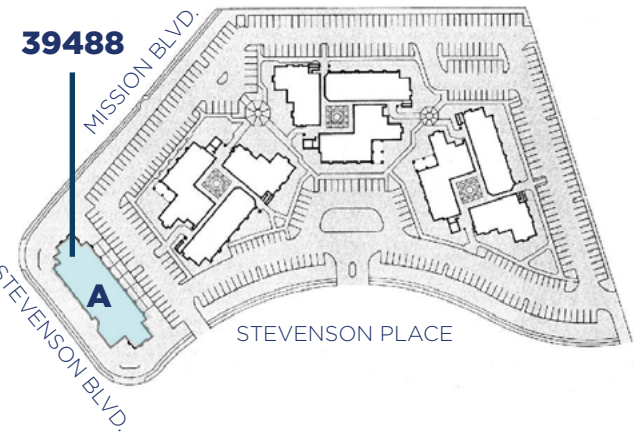
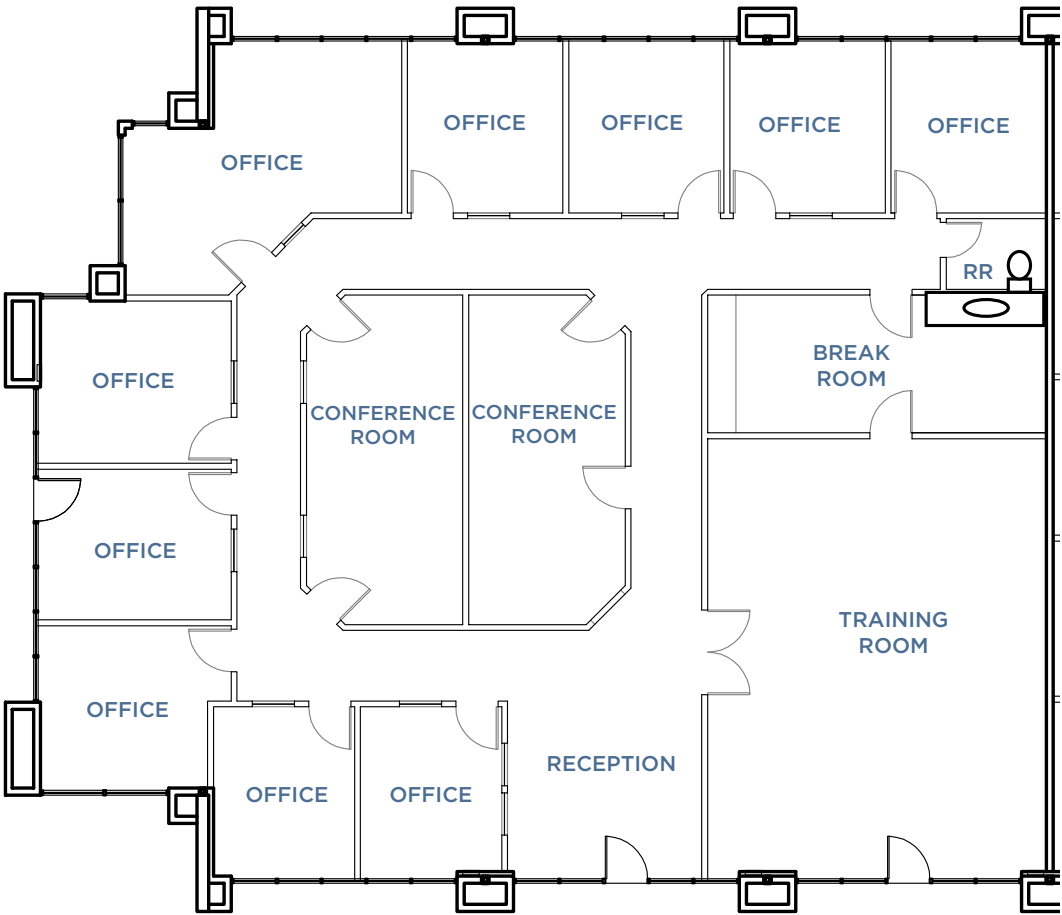


# MISSION HILLS PLAZA

39488 STEVENSON PLACE, FREMONT

## FLOOR PLAN

BUILDING A  
SUITE 100: ±4,693 SF

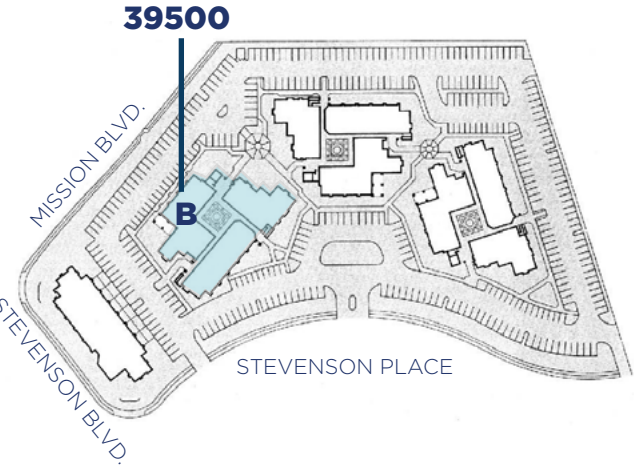
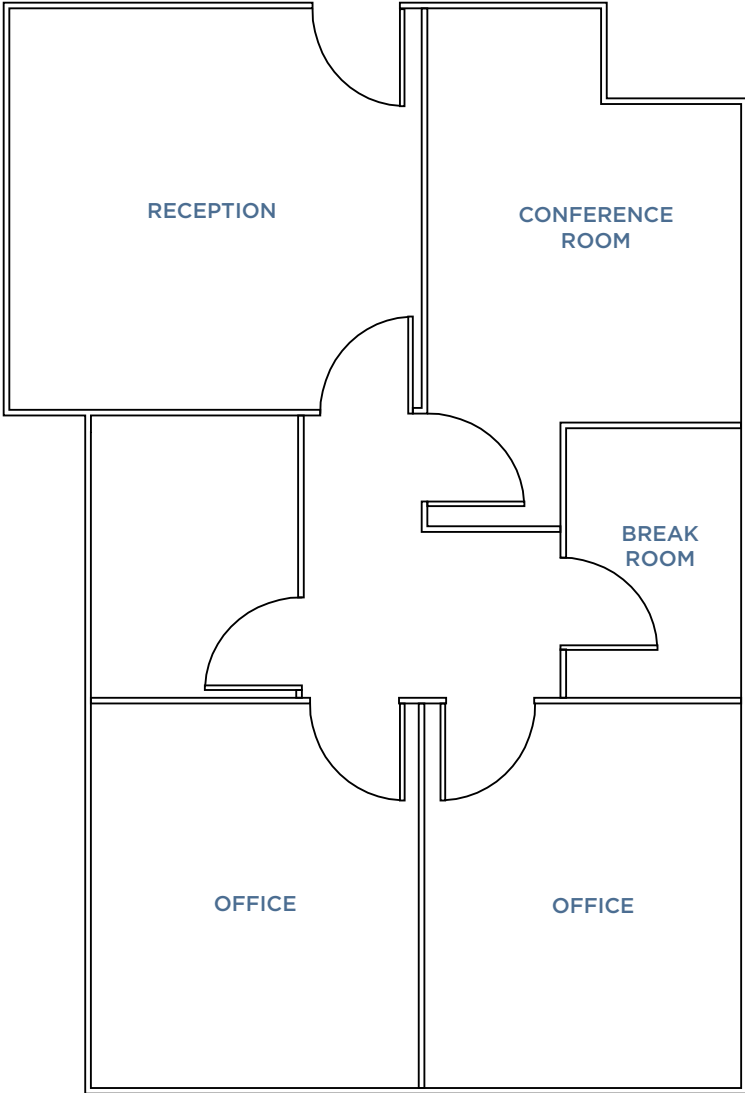


# MISSION HILLS PLAZA

39500 STEVENSON PLACE, FREMONT

## FLOOR PLAN

BUILDING B  
SUITE 203: ±1,259 SF

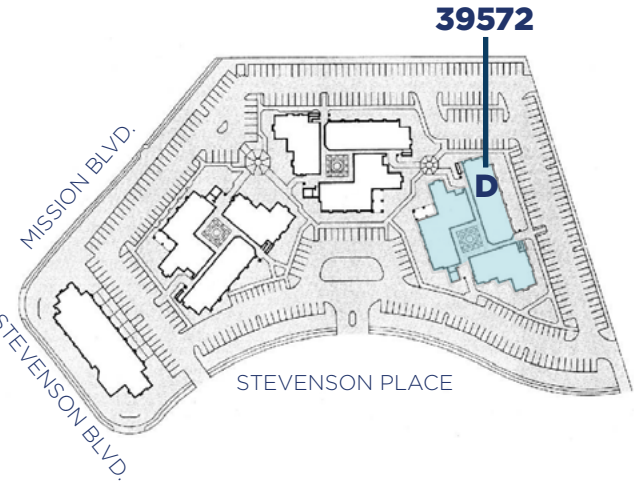
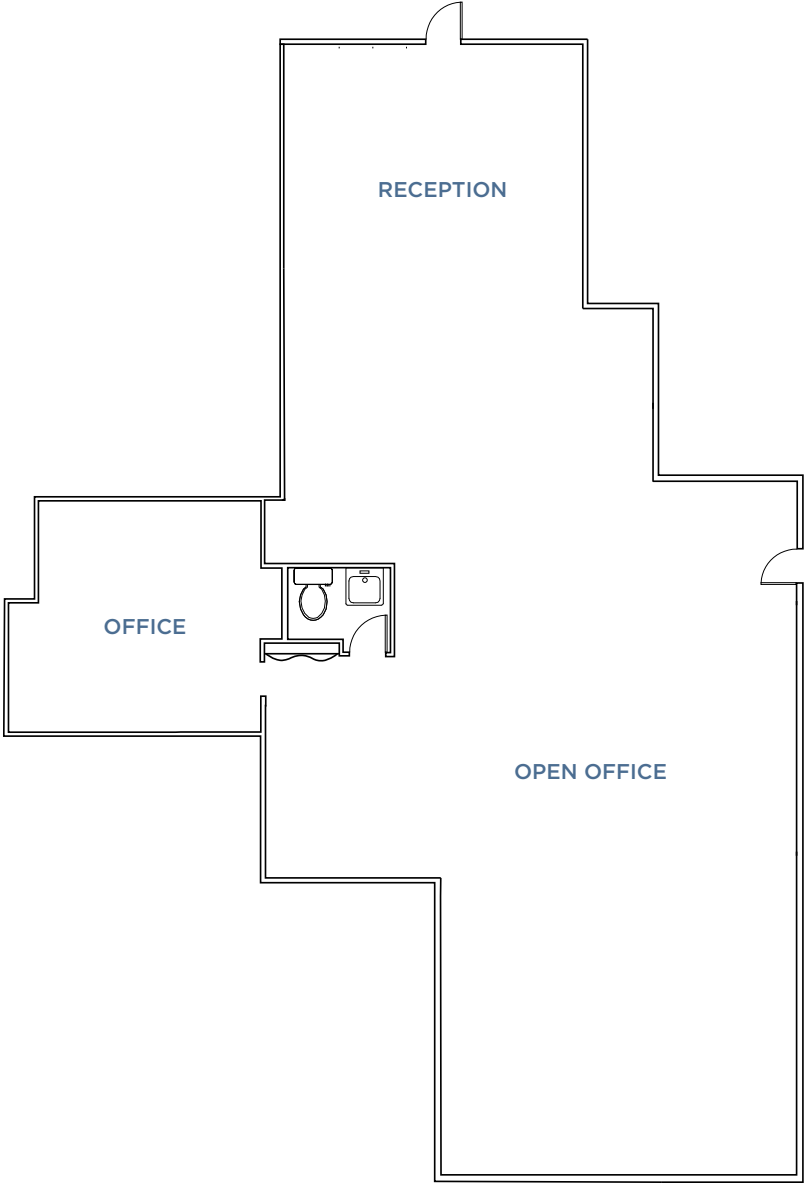


# MISSION HILLS PLAZA

39572 STEVENSON PLACE, FREMONT

## FLOOR PLAN

BUILDING D  
SUITE 126: ±2,325 SF

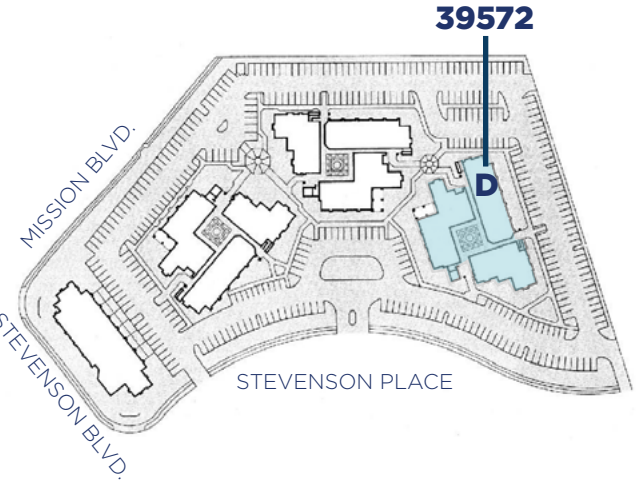
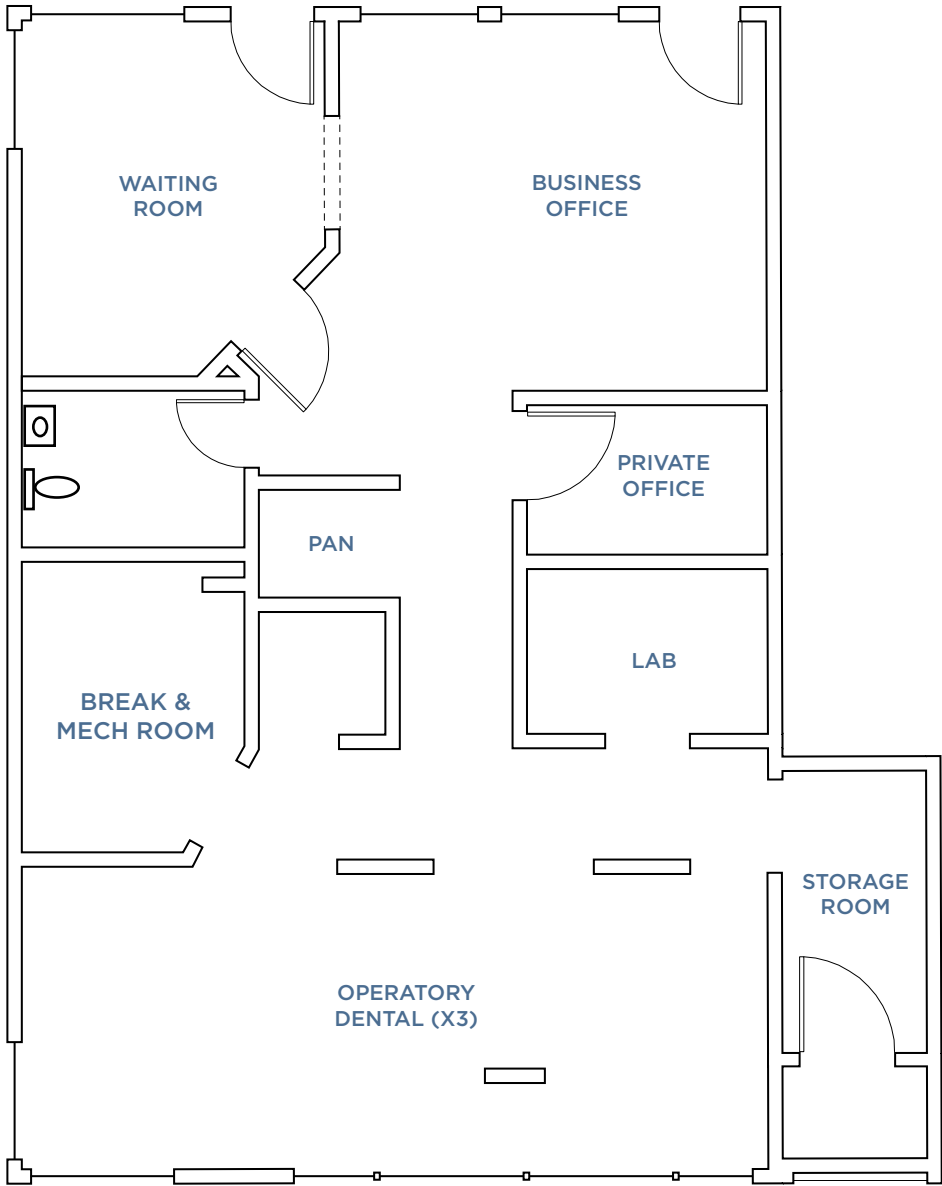


# MISSION HILLS PLAZA

39572 STEVENSON PLACE, FREMONT

## FLOOR PLAN

BUILDING D  
SUITE 222: ±1,281 SF  
DENTAL UNIT

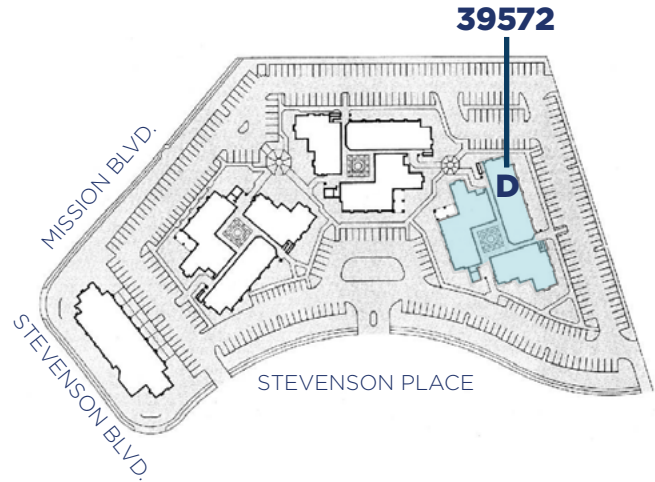
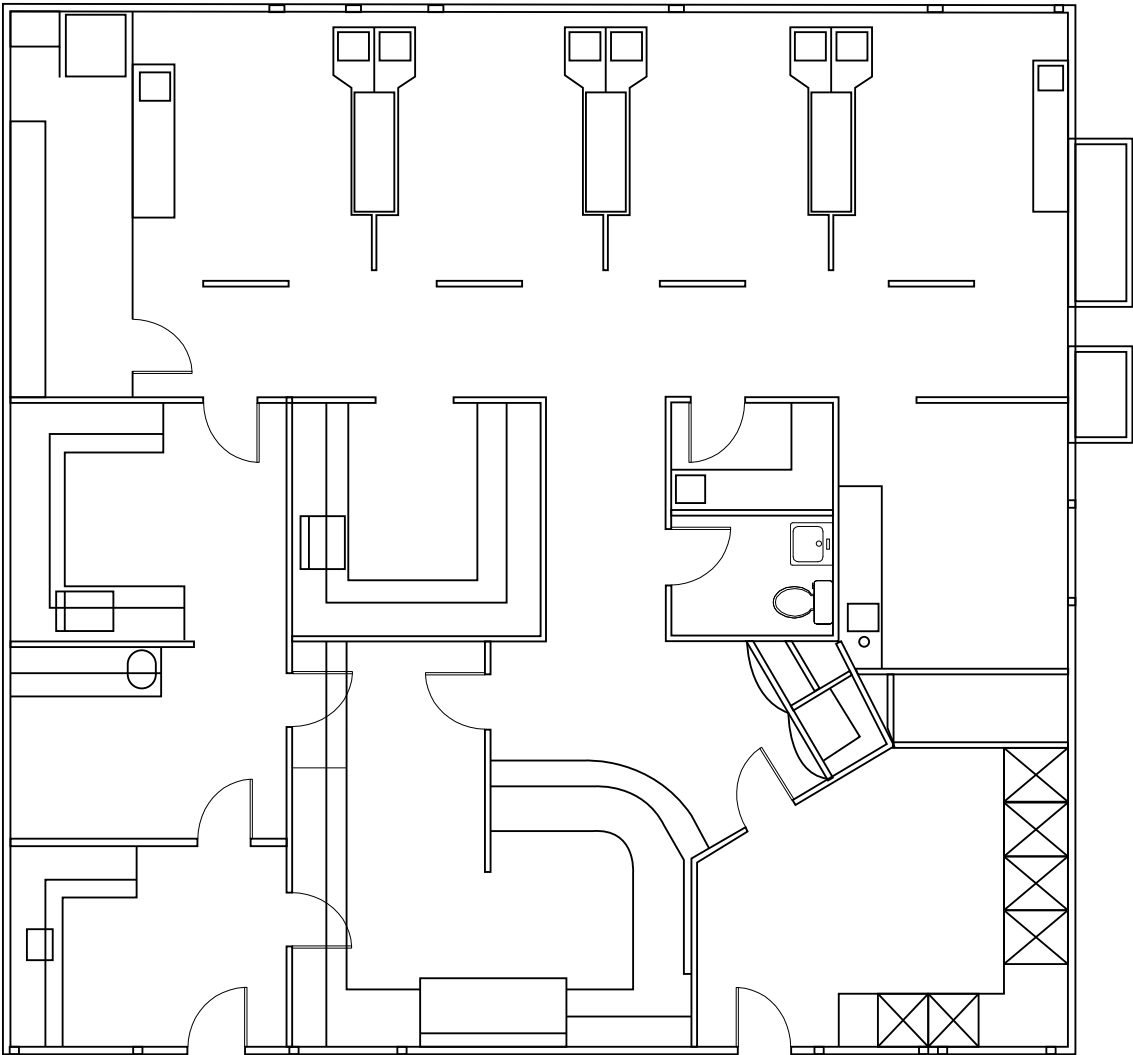


# MISSION HILLS PLAZA

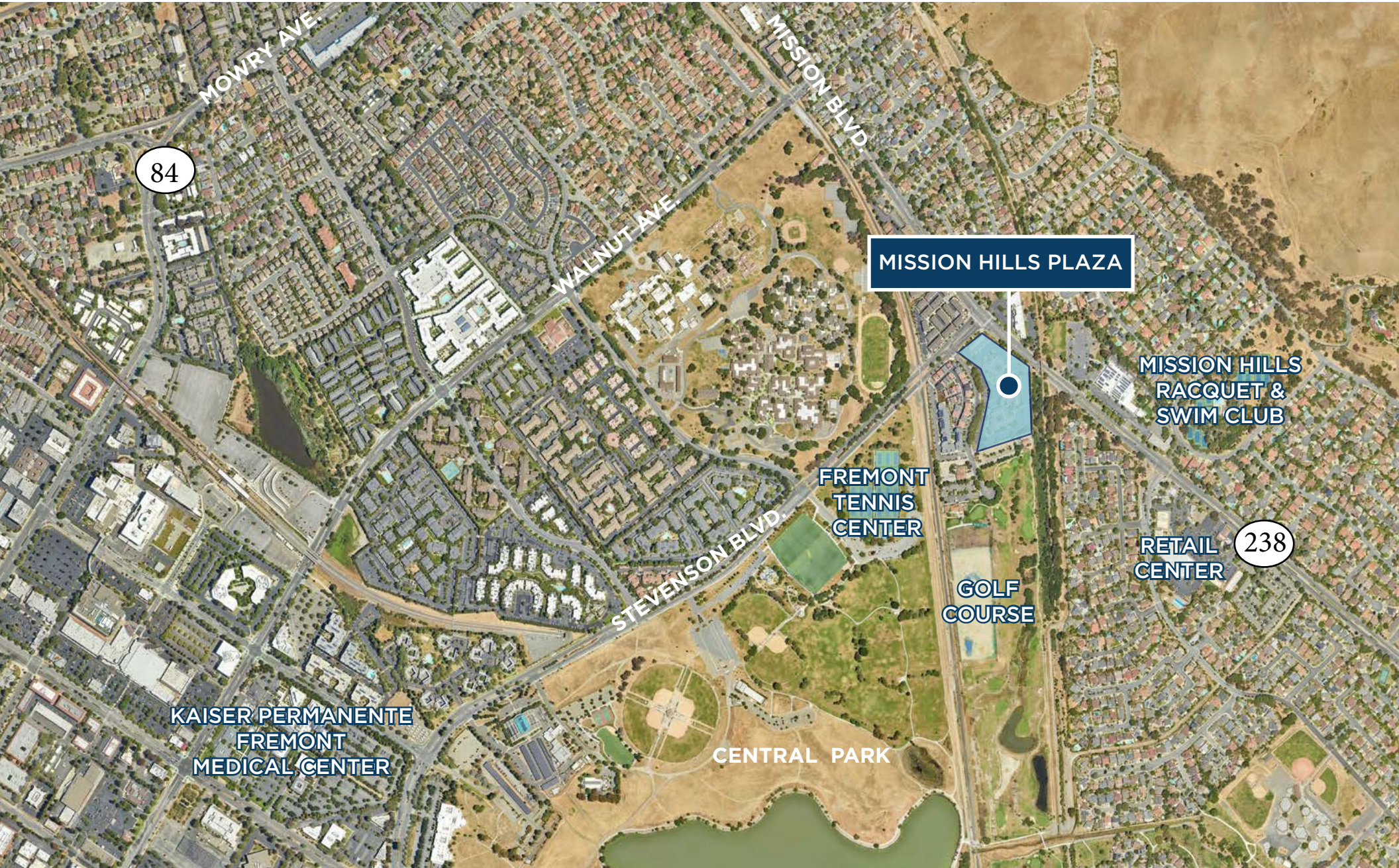
39572 STEVENSON PLACE, FREMONT

## FLOOR PLAN

BUILDING D  
SUITE 231: ±1,902 SF  
DENTAL UNIT



# MISSION HILLS PLAZA



84

MOWRY AVE.

WALNUT AVE.

MISSION BLVD.

MISSION HILLS PLAZA

MISSION HILLS  
RACQUET &  
SWIM CLUB

FREMONT  
TENNIS  
CENTER

STEVENSON BLVD.

GOLF  
COURSE

RETAIL  
CENTER

238

KAISER PERMANENTE  
FREMONT  
MEDICAL CENTER

CENTRAL PARK