

BERING/ZANKER BUSINESS PARK

±8,200 SF - ±16,400 SF AVAILABLE | SAN JOSE, CA



For more information, please contact:

Steve Pace
P +1 408 615 3419
steve.pace@cushwake.com
LIC #00817396

Dan Hollingsworth
P +1 408 615 3431
dan.hollingsworth@cushwake.com
LIC #01117716

Tiana Dampier
P +1 408 436 3680
tiana.dampier@cushwake.com
LIC #02191012


DOLLINGER PROPERTIES
DRE #02116818

 **CUSHMAN &
WAKEFIELD**

Current Availabilities

- 2343 Bering Dr: ±8,200 SF
- 2309 Bering Dr: ±9,816 SF
- 2371 Bering Dr: ±10,564 SF
- 2333 Zanker Rd: ±16,400 SF

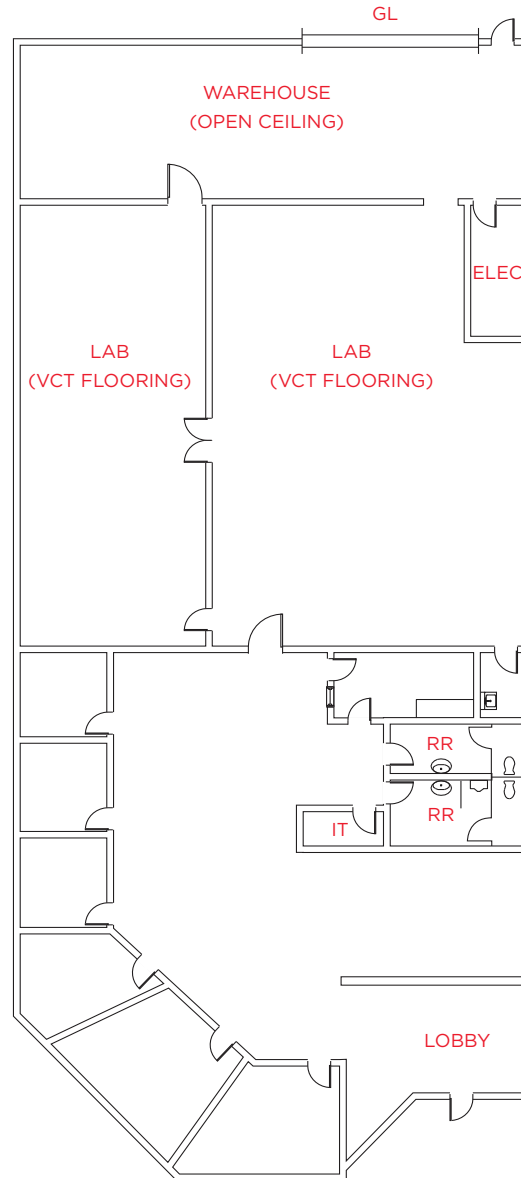
Highlights

- High Image North San Jose location
- 4/1,000 Parking
- Easy Access to Highways 101 & 880
- Walk to Light Rail Station
- Lab, Warehouse, Open Office, Privates and Conference Space



2343 BERING DRIVE | San Jose, California

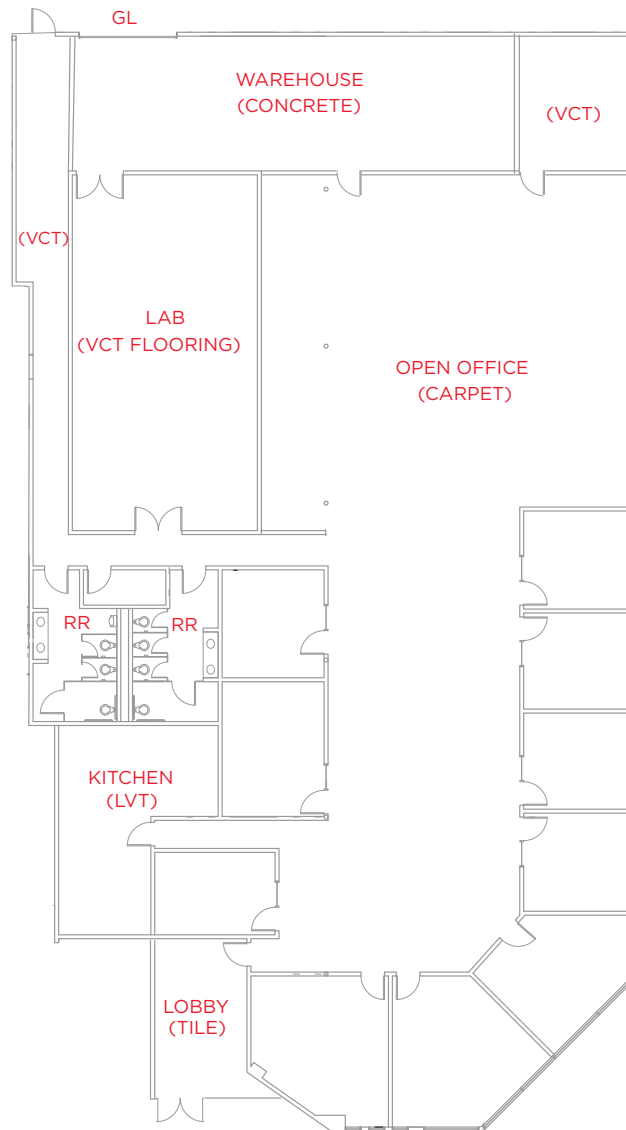
Floor Plan | ±8,200 SF



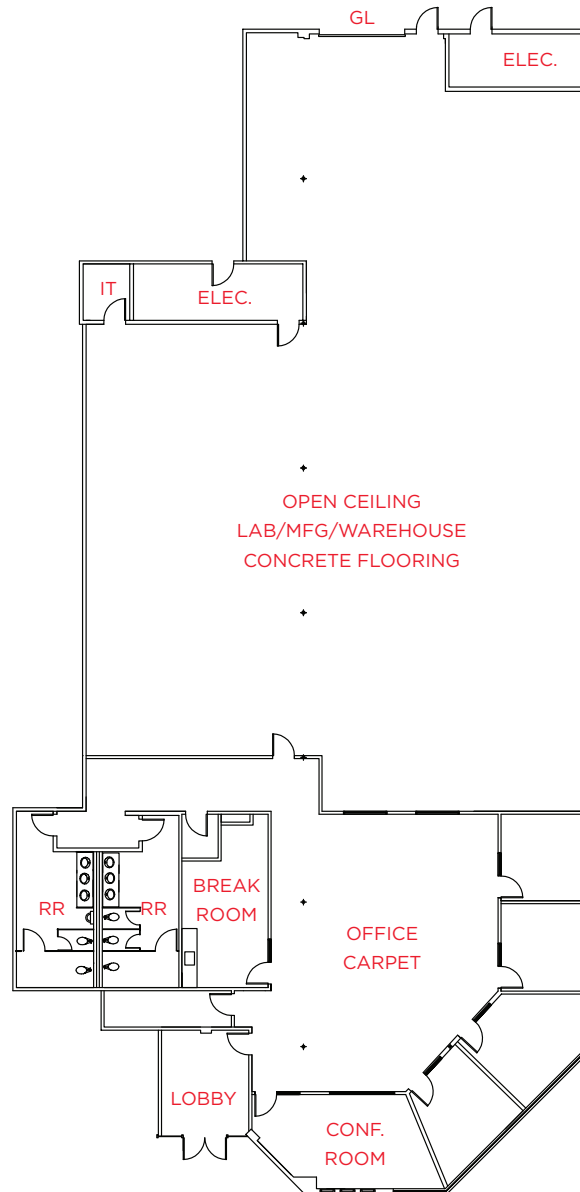
- **Power:**
400 Amps @ 480 Volts
- **HVAC**
42.5 Tons
- **Description**
Office, Privates & Open Labs, VCT with Power Warehouse, Open Ceiling, Break Room, Grade Level Door, End Unit

2309 BERING DRIVE | San Jose, California

Floor Plan | ±9,816 SF



- **Power:**
400 Amps @ 277/480 Volts
- **HVAC**
4 Units Totaling Approx.
50 Tons of Cooling
- **Description**
Reception, Perimeter
Privates, Large Lab Area,
Small Warehouse, Grade
Level Door, Shower

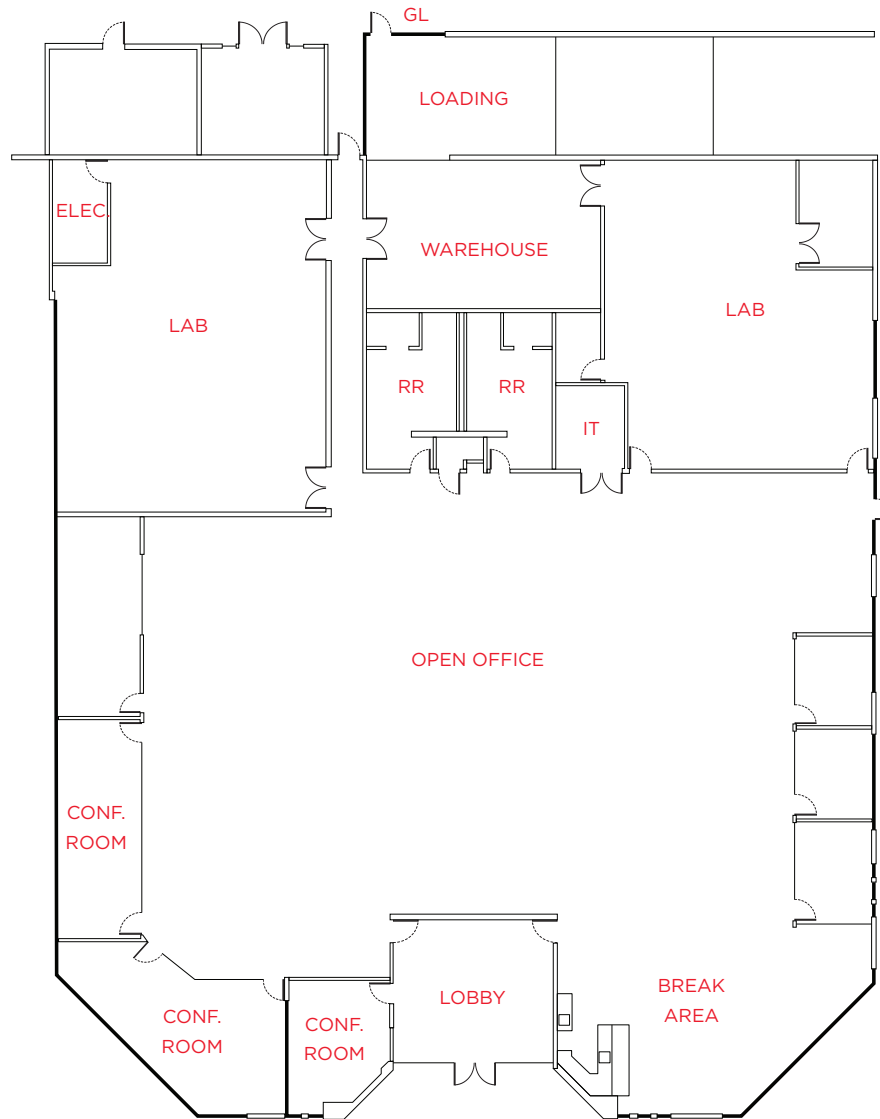
Floor Plan | $\pm 10,564$ SF

- **Power:**
200 Amps @ 480 Volts
600 Amps @ 208 Volts
- **HVAC**
100%
4 Units Totaling Approx. 20 Tons
- **Clear Height 14'**
- **Description**
Open Office, Privates,
Conference Room,
Lobby, Break Room, Lab/
Mfg/Warehouse, Grade
Level Door, End Unit

2333 ZANKER ROAD

San Jose, California

Floor Plan | ±16,400 SF



- **Power:**
800 Amps @ 277/480 Volts
3 Phase 4 Wire
- **HVAC**
100%
- **Clear Height 14'**
- **Description**
Open Office, Privates,
Conference Rooms,
Lobby, Break Area, Lab/
Mfg/Warehouse, Grade
Level Door, End Unit

BERING / ZANKER BUSINESS PARK

San Jose, California

Public Transit and Amenities

