

EASTWAY VILLAGE DRIVE

Humble, TX 77338



FOR SALE | READY TO DEVELOP SITE

PRICE REDUCTION!



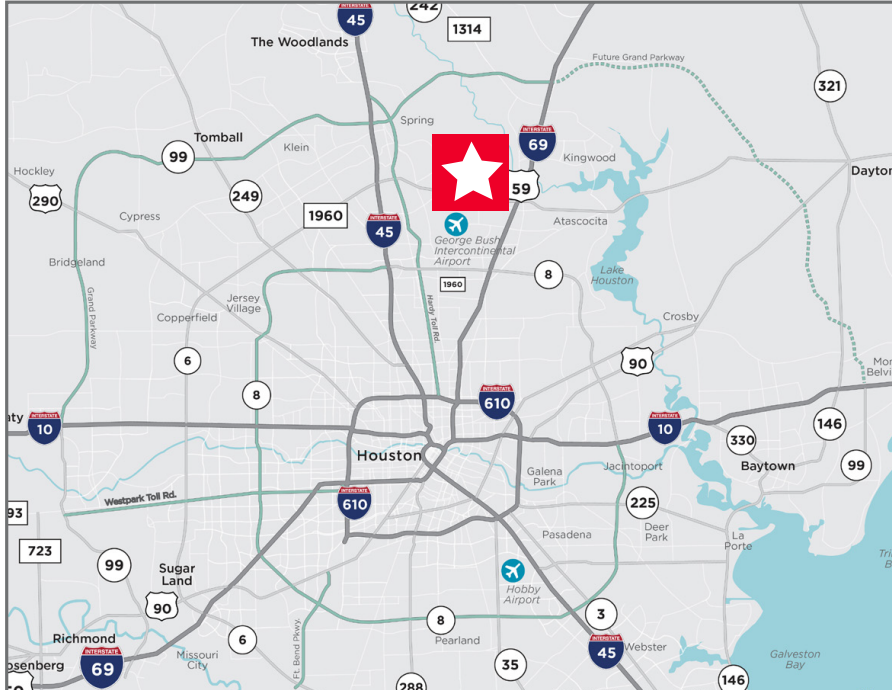
EASTWAY VILLAGE DRIVE

Humble, TX 77338

PROPERTY HIGHLIGHTS

- 2.4391 acres
- 220' frontage on Eastway Village Drive
- City of Humble utilities
- 10 minutes to George Bush Intercontinental Airport
- Cleared site, ready to develop
- Great access to FM 1960 and I-69 /US-59
- Traffic counts:
 - I-69 / US-59 - 110,000 cars per day
 - FM 1960 - 29,925 cars per day

CALL BROKER FOR PRICING GUIDANCE



For more information, please contact:

Coe Parker, SIOR | Senior Director | +1 713 963 2825 | coe.parker@cushwake.com

B. Kelley Parker III, SIOR | Vice Chairman | +1 713 963 2896 | kelley.parker@cushwake.com

John F. Littman, SIOR | Executive Managing Director | +1 713 963 2862 | john.littman@cushwake.com

1330 Post Oak Boulevard
Suite 2700 | Houston, TX 77056
+1 713 877 1700
cushmanwakefield.com

EASTWAY VILLAGE DRIVE

Humble, TX 77338

AMENITIES MAP



For more information, please contact:

Coe Parker, SIOR | Senior Director | +1 713 963 2825 | coe.parker@cushwake.com

B. Kelley Parker III, SIOR | Vice Chairman | +1 713 963 2896 | kelly.parker@cushwake.com

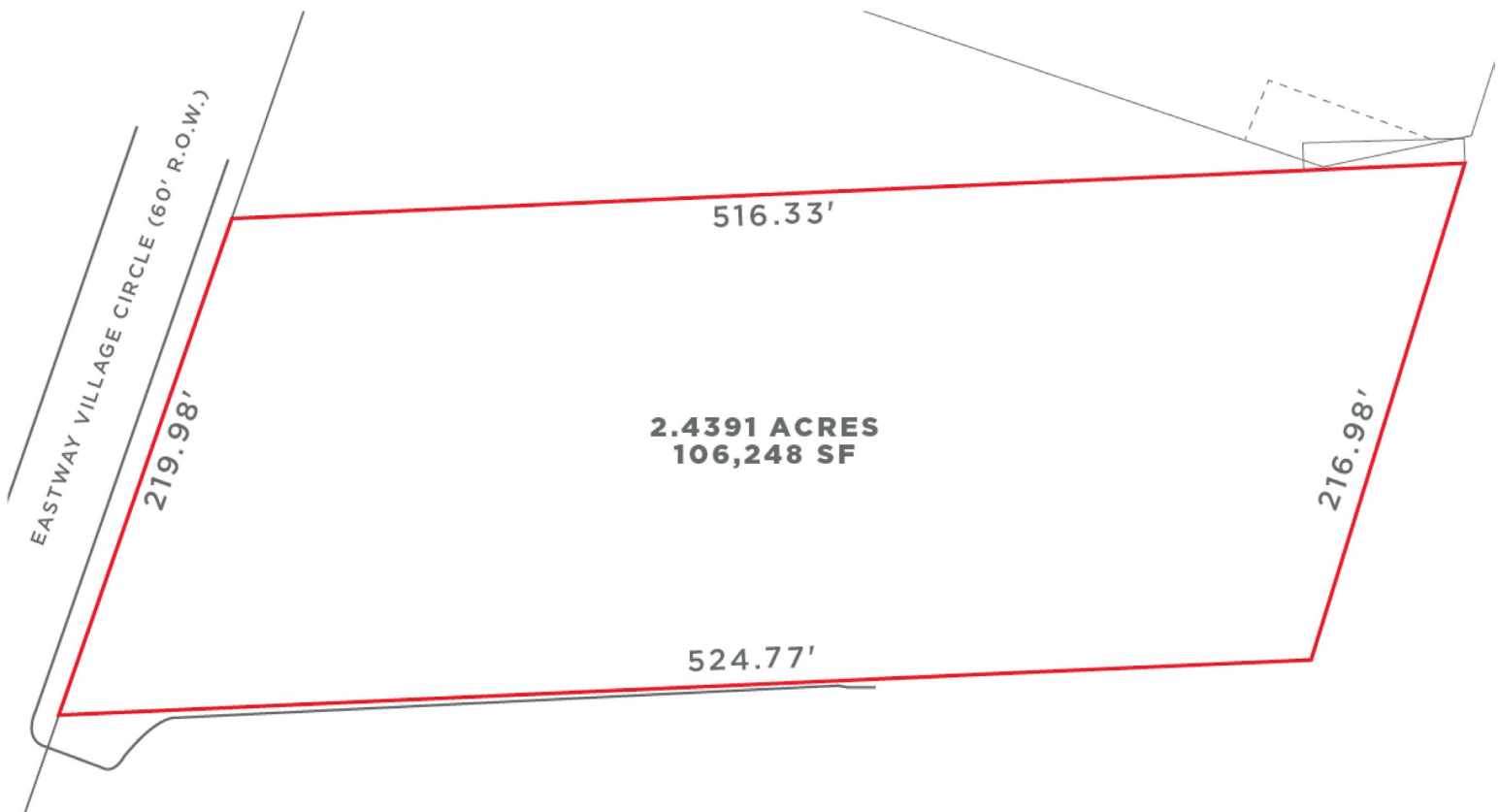
John F. Littman, SIOR | Executive Managing Director | +1 713 963 2862 | john.littman@cushwake.com

1330 Post Oak Boulevard
Suite 2700 | Houston, TX 77056
+1 713 877 1700
cushmanwakefield.com

EASTWAY VILLAGE DRIVE

Humble, TX 77338

SITE PLAN



For more information, please contact:

Coe Parker, SIOR | Senior Director | +1 713 963 2825 | coe.parker@cushwake.com

B. Kelley Parker III, SIOR | Vice Chairman | +1 713 963 2896 | kelly.parker@cushwake.com

John F. Littman, SIOR | Executive Managing Director | +1 713 963 2862 | john.littman@cushwake.com

1330 Post Oak Boulevard
Suite 2700 | Houston, TX 77056
+1 713 877 1700
cushmanwakefield.com