

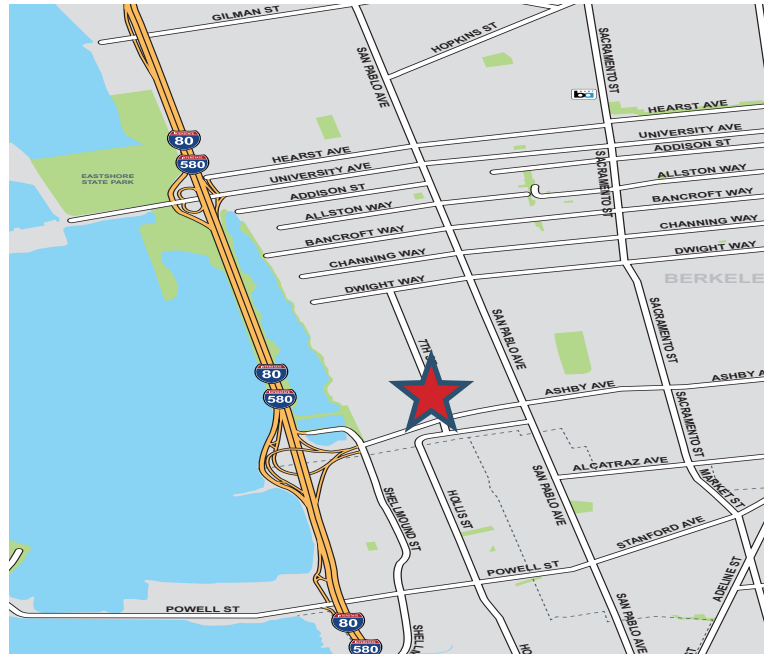
FOR SUBLEASE

2850 7th Street, Berkeley



PROPERTY HIGHLIGHTS

- ±4,237 SF Office Sublease
- Sublease Term Through October 31, 2026
- Open Plan with Six (6) Offices or Conference Rooms
- Open Area can Accommodate up to Thirty-Two (32) Desks
- Kitchenette
- Storage, IT Closet and Bike Storage
- Exposed Brick in Reception Area
- On-Site Parking
- Two (2) En-Suite Bathrooms
- Asking Rate: \$2.25 IG



DAVID ENGLERT

Senior Director
510 267 6037

david.englert@cushwake.com

LIC #01291709

ELI CERYAK

Bridgeview Commercial Real Estate
415 629 2304

eli.ceryak@bridgeviewcre.com

LIC #01304628

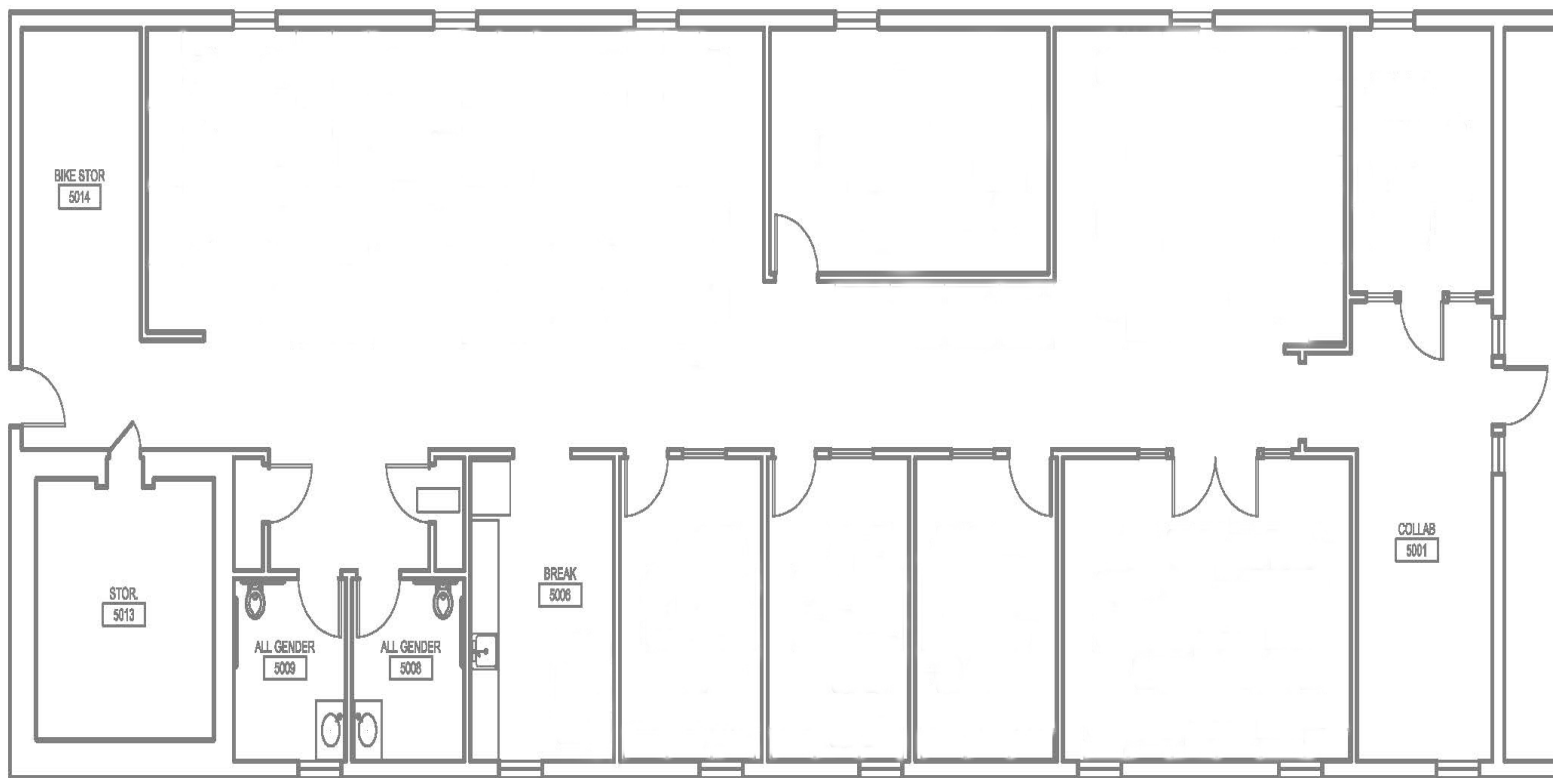
 **CUSHMAN & WAKEFIELD**

 **BRIDGEVIEW**

FOR SUBLEASE

2850 7th Street, Berkeley

FLOOR PLAN



DAVID ENGLERT

Senior Director

510 267 6037

david.englert@cushwake.com

LIC #01291709

ELI CERYAK

Bridgeview Commercial Real Estate

415 629 2304

eli.ceryak@bridgeviewcre.com

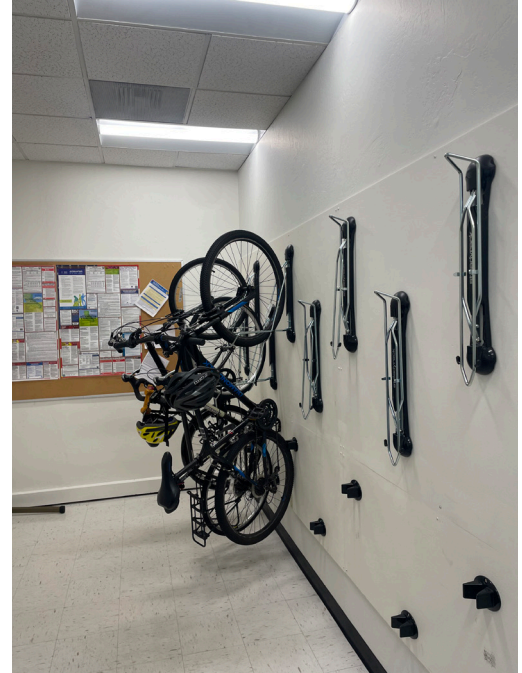
LIC #01304628



FOR SUBLEASE

2850 7th Street, Berkeley

PHOTOS



DAVID ENGLERT

Senior Director

510 267 6037

david.englert@cushwake.com

LIC #01291709

ELI CERYAK

Bridgeview Commercial Real Estate

415 629 2304

eli.ceryak@bridgeviewcre.com

LIC #01304628

 **CUSHMAN &
WAKEFIELD**


BRIDGEVIEW

©2024 Cushman & Wakefield. All rights reserved. The information contained in this communication is strictly confidential. This information has been obtained from sources believed to be reliable but has not been verified. NO WARRANTY OR REPRESENTATION, EXPRESS OR IMPLIED, IS MADE AS TO THE CONDITION OF THE PROPERTY (OR PROPERTIES) REFERENCED HEREIN OR AS TO THE ACCURACY OR COMPLETENESS OF THE INFORMATION CONTAINED HEREIN, AND SAME IS SUBMITTED SUBJECT TO ERRORS, OMISSIONS, CHANGE OF PRICE, RENTAL OR OTHER CONDITIONS, WITHDRAWAL WITHOUT NOTICE, AND TO ANY SPECIAL LISTING CONDITIONS IMPOSED BY THE PROPERTY OWNER(S). ANY PROJECTIONS, OPINIONS OR ESTIMATES ARE SUBJECT TO UNCERTAINTY AND DO NOT SIGNIFY CURRENT OR FUTURE PROPERTY PERFORMANCE.